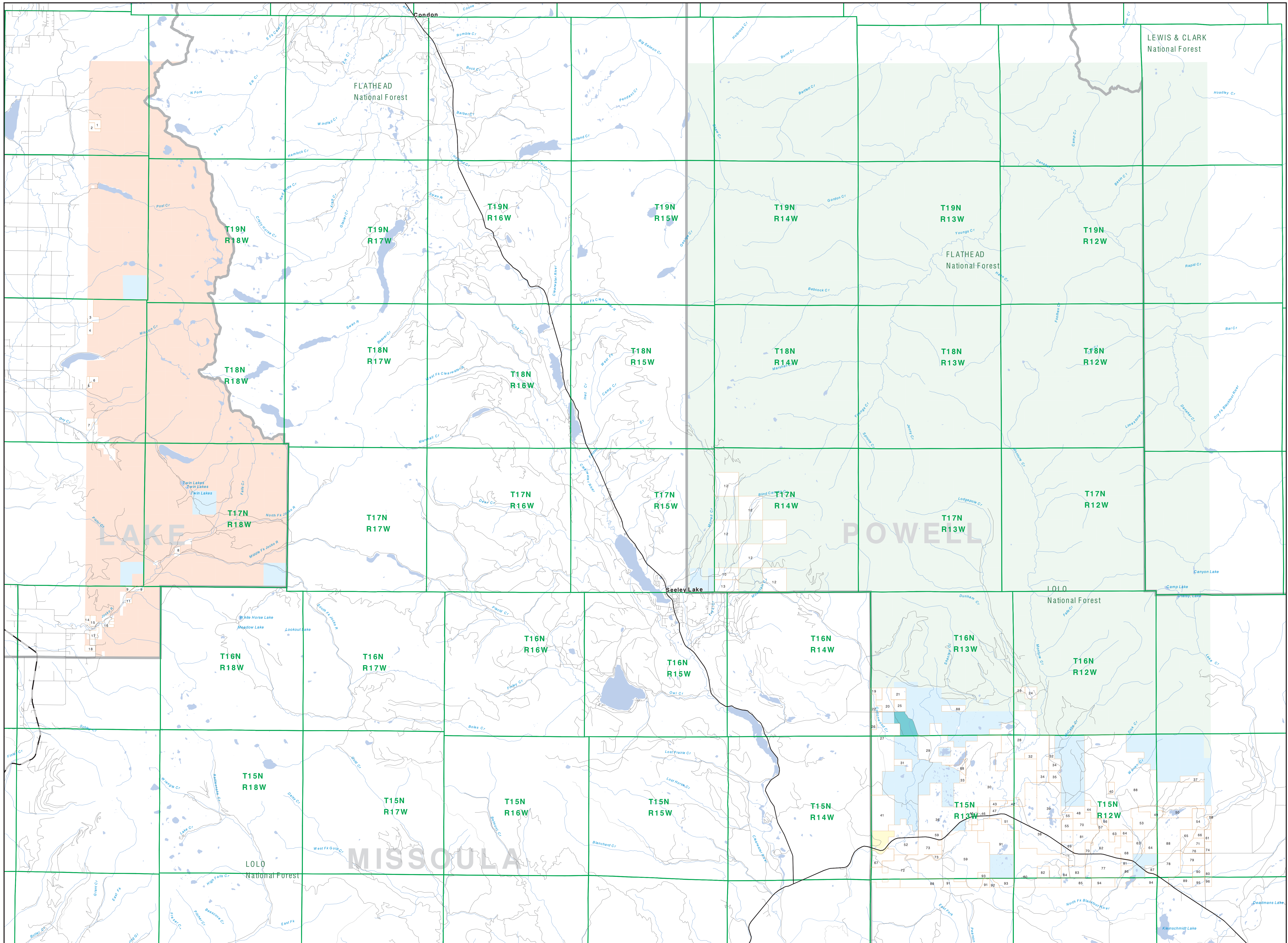


# Private Land Ownership Identification

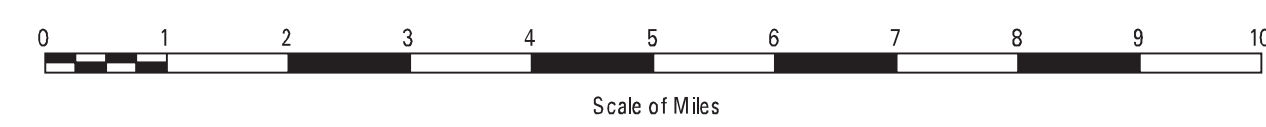
## SEELEY LAKE - (47113a)



1. JOHN WELLS & PARTNERS
2. JOHN WELLS & PARTNERS
3. FREDERICK STEVENSON
4. MONTANA NATURAL RESOURCE INFORMATION SYSTEM
5. MONTANA NATURAL RESOURCE INFORMATION SYSTEM
6. MONTANA NATURAL RESOURCE INFORMATION SYSTEM
7. MONTANA NATURAL RESOURCE INFORMATION SYSTEM
8. MONTANA NATURAL RESOURCE INFORMATION SYSTEM
9. MONTANA NATURAL RESOURCE INFORMATION SYSTEM
10. MONTANA NATURAL RESOURCE INFORMATION SYSTEM
11. MONTANA NATURAL RESOURCE INFORMATION SYSTEM
12. MONTANA NATURAL RESOURCE INFORMATION SYSTEM
13. MONTANA NATURAL RESOURCE INFORMATION SYSTEM
14. MONTANA NATURAL RESOURCE INFORMATION SYSTEM
15. MONTANA NATURAL RESOURCE INFORMATION SYSTEM
16. MONTANA NATURAL RESOURCE INFORMATION SYSTEM
17. MONTANA NATURAL RESOURCE INFORMATION SYSTEM
18. MONTANA NATURAL RESOURCE INFORMATION SYSTEM
19. MONTANA NATURAL RESOURCE INFORMATION SYSTEM
20. MONTANA NATURAL RESOURCE INFORMATION SYSTEM
21. MONTANA NATURAL RESOURCE INFORMATION SYSTEM
22. MONTANA NATURAL RESOURCE INFORMATION SYSTEM
23. MONTANA NATURAL RESOURCE INFORMATION SYSTEM
24. MONTANA NATURAL RESOURCE INFORMATION SYSTEM
25. MONTANA NATURAL RESOURCE INFORMATION SYSTEM
26. MONTANA NATURAL RESOURCE INFORMATION SYSTEM
27. MONTANA NATURAL RESOURCE INFORMATION SYSTEM
28. MONTANA NATURAL RESOURCE INFORMATION SYSTEM
29. MONTANA NATURAL RESOURCE INFORMATION SYSTEM
30. MONTANA NATURAL RESOURCE INFORMATION SYSTEM
31. MONTANA NATURAL RESOURCE INFORMATION SYSTEM
32. MONTANA NATURAL RESOURCE INFORMATION SYSTEM
33. MONTANA NATURAL RESOURCE INFORMATION SYSTEM
34. MONTANA NATURAL RESOURCE INFORMATION SYSTEM
35. MONTANA NATURAL RESOURCE INFORMATION SYSTEM
36. MONTANA NATURAL RESOURCE INFORMATION SYSTEM
37. MONTANA NATURAL RESOURCE INFORMATION SYSTEM
38. MONTANA NATURAL RESOURCE INFORMATION SYSTEM
39. MONTANA NATURAL RESOURCE INFORMATION SYSTEM
40. MONTANA NATURAL RESOURCE INFORMATION SYSTEM
41. MONTANA NATURAL RESOURCE INFORMATION SYSTEM
42. MONTANA NATURAL RESOURCE INFORMATION SYSTEM
43. MONTANA NATURAL RESOURCE INFORMATION SYSTEM
44. MONTANA NATURAL RESOURCE INFORMATION SYSTEM
45. MONTANA NATURAL RESOURCE INFORMATION SYSTEM
46. MONTANA NATURAL RESOURCE INFORMATION SYSTEM
47. MONTANA NATURAL RESOURCE INFORMATION SYSTEM
48. MONTANA NATURAL RESOURCE INFORMATION SYSTEM
49. MONTANA NATURAL RESOURCE INFORMATION SYSTEM
50. MONTANA NATURAL RESOURCE INFORMATION SYSTEM
51. MONTANA NATURAL RESOURCE INFORMATION SYSTEM
52. MONTANA NATURAL RESOURCE INFORMATION SYSTEM
53. MONTANA NATURAL RESOURCE INFORMATION SYSTEM
54. MONTANA NATURAL RESOURCE INFORMATION SYSTEM
55. MONTANA NATURAL RESOURCE INFORMATION SYSTEM
56. MONTANA NATURAL RESOURCE INFORMATION SYSTEM
57. MONTANA NATURAL RESOURCE INFORMATION SYSTEM
58. MONTANA NATURAL RESOURCE INFORMATION SYSTEM
59. MONTANA NATURAL RESOURCE INFORMATION SYSTEM
60. MONTANA NATURAL RESOURCE INFORMATION SYSTEM
61. MONTANA NATURAL RESOURCE INFORMATION SYSTEM
62. MONTANA NATURAL RESOURCE INFORMATION SYSTEM
63. MONTANA NATURAL RESOURCE INFORMATION SYSTEM
64. MONTANA NATURAL RESOURCE INFORMATION SYSTEM
65. MONTANA NATURAL RESOURCE INFORMATION SYSTEM
66. MONTANA NATURAL RESOURCE INFORMATION SYSTEM
67. MONTANA NATURAL RESOURCE INFORMATION SYSTEM
68. MONTANA NATURAL RESOURCE INFORMATION SYSTEM
69. MONTANA NATURAL RESOURCE INFORMATION SYSTEM
70. MONTANA NATURAL RESOURCE INFORMATION SYSTEM
71. MONTANA NATURAL RESOURCE INFORMATION SYSTEM
72. MONTANA NATURAL RESOURCE INFORMATION SYSTEM
73. MONTANA NATURAL RESOURCE INFORMATION SYSTEM
74. MONTANA NATURAL RESOURCE INFORMATION SYSTEM
75. MONTANA NATURAL RESOURCE INFORMATION SYSTEM
76. MONTANA NATURAL RESOURCE INFORMATION SYSTEM
77. MONTANA NATURAL RESOURCE INFORMATION SYSTEM
78. MONTANA NATURAL RESOURCE INFORMATION SYSTEM
79. MONTANA NATURAL RESOURCE INFORMATION SYSTEM
80. MONTANA NATURAL RESOURCE INFORMATION SYSTEM
81. MONTANA NATURAL RESOURCE INFORMATION SYSTEM
82. MONTANA NATURAL RESOURCE INFORMATION SYSTEM
83. MONTANA NATURAL RESOURCE INFORMATION SYSTEM
84. MONTANA NATURAL RESOURCE INFORMATION SYSTEM
85. MONTANA NATURAL RESOURCE INFORMATION SYSTEM
86. MONTANA NATURAL RESOURCE INFORMATION SYSTEM
87. MONTANA NATURAL RESOURCE INFORMATION SYSTEM
88. MONTANA NATURAL RESOURCE INFORMATION SYSTEM
89. MONTANA NATURAL RESOURCE INFORMATION SYSTEM
90. MONTANA NATURAL RESOURCE INFORMATION SYSTEM
91. MONTANA NATURAL RESOURCE INFORMATION SYSTEM
92. MONTANA NATURAL RESOURCE INFORMATION SYSTEM
93. MONTANA NATURAL RESOURCE INFORMATION SYSTEM
94. MONTANA NATURAL RESOURCE INFORMATION SYSTEM
95. MONTANA NATURAL RESOURCE INFORMATION SYSTEM
96. MONTANA NATURAL RESOURCE INFORMATION SYSTEM
97. MONTANA NATURAL RESOURCE INFORMATION SYSTEM
98. MONTANA NATURAL RESOURCE INFORMATION SYSTEM
99. MONTANA NATURAL RESOURCE INFORMATION SYSTEM
100. MONTANA NATURAL RESOURCE INFORMATION SYSTEM

	Private		State Lands		Road
	Forest Service		Local Govt		Primitive Road
	Bureau of Land Management		Native American		River
	National Park Service		MFWP - WMA		Stream/Creek
	Other Federal Land		Lake/Reservoir		Intermittent Creek
	Fish and Wildlife Service		Interstate		Township
			Secondary Highway		County Border
			Highway		Fish Wildlife & Parks Wildlife Management Area

**NOTES:**  
 Not all legend items may appear on this map. Features shown on the map do not imply public access to any lands. The land status data displayed on this map may not be complete and may contain errors in boundary location and/or coding.  
**DISCLAIMER:**  
 The MT Natural Heritage Program, MT State Library, MT Dept. of Administration and MT Dept. of Revenue make no representation or warranties whatsoever with respect to the accuracy or completeness of the data contained in these maps and assumes no responsibility for the suitability of these data for a particular purpose. These agencies will not be liable for any damages incurred as a result of errors displayed here. The ownership boundaries displayed on this map are not based on land survey data and are not a substitute for property surveys. This map displays public and private land ownership information derived from several sources and continues to be corrected and updated.



**SOURCES ACKNOWLEDGEMENTS**  
 This map was produced as a joint effort between the MT Dept. of Fish, Wildlife, and Parks (FWP) and the Montana Natural Resource Information System (NRIS) of the MT State Library, in response to Montana Code Annotated 87-2-309, which directs the FWP to work cooperatively with all state and local land management agencies... to develop accurate land ownership maps... in the State.  
 The public land data is from the MT Natural Heritage Program land stewardship data collection. Much of this data was originally digitized by the Bureau of Land Management (BLM) from 1:100,000 scale BLM Surface Management Status maps. Additional information, corrections and updates (especially for rural lands and private lands) were added by the University of Montana, Wildlife Spatial Analysis Unit, during 1996-1998. Since 1998, the Montana Natural Heritage Program has made numerous updates and corrections (especially for state trust lands, Montana Fish, Wildlife & Parks areas, US Fish & Wildlife Service areas, and cooperative easements). These edits are based on data supplied by the various public agencies and land trusts, and have not been verified against county or Montana Department of Revenue records.

The private land data was developed for the Montana Cadastral Database Project. These data are provided through a cooperative effort between the Montana Department of Administration (ODA), the Montana Department of Revenue (DOR), other state agencies, local governments, USDBLM and private enterprise. Lands depicted on this map represent single ownership or contiguous parcels that are at least 40 acres in size. The ODA maintains the GIS spatial layer, and the DOR maintains the private ownership information.  
 The base scale for the public ownership data is 1:100,000, though many of the recent (with proprietary data digitized from 1:25,000 scale maps or survey data). Private ownership data is accurate to scales of 1:24,000 or smaller.  
 Map produced September 2008 with ownership data current as of August 2008.

