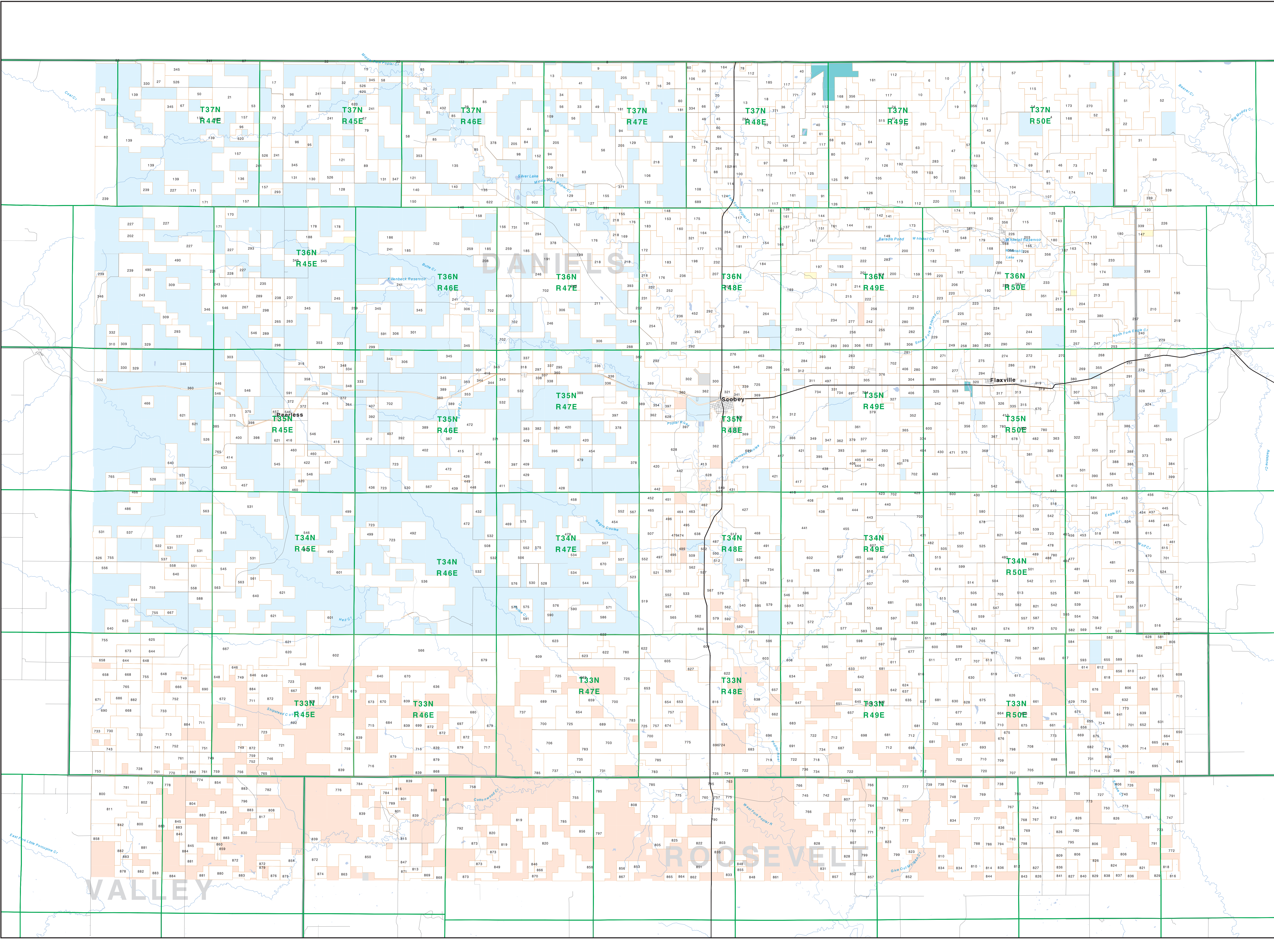


Private Land Ownership Identification SCOB EY - (48105b)



Legend for land ownership types: Private, Forest Service, Bureau of Land Management, National Park Service, Other Federal Land, Fish and Wildlife Service, State Lands, Local Govt, Native American, MFWP - WMA, Lake/Reservoir, Interstate, Secondary Highway, Primitive Road, River, Stream/Creek, Intermittent Creek, Township, County Border, Fish Wildlife & Parks Wildlife Management Area.

NOTES: Not all reported items may appear on this map. Features shown on this map do not constitute public access to any lands. The land data shown on this map was derived from the Montana Department of Fish, Wildlife & Parks (MFWP) in cooperation with the Montana Department of State Lands.

SOURCES / ACKNOWLEDGMENTS: This map was produced as a joint effort between the MT Dept. of Fish, Wildlife & Parks (MFWP) and the Montana Natural Resource Information System (NRIS). The data was provided through a cooperative effort between the Montana Department of Fish, Wildlife & Parks (MFWP) and the Montana Department of State Lands.

The private land data were developed for the Montana Cadastral Database Project. These data were provided through a cooperative effort between the Montana Department of Fish, Wildlife & Parks (MFWP) and the Montana Department of State Lands.

USGS 100,000 Scale Quadrangle Index table with columns for Easting and Northing coordinates.