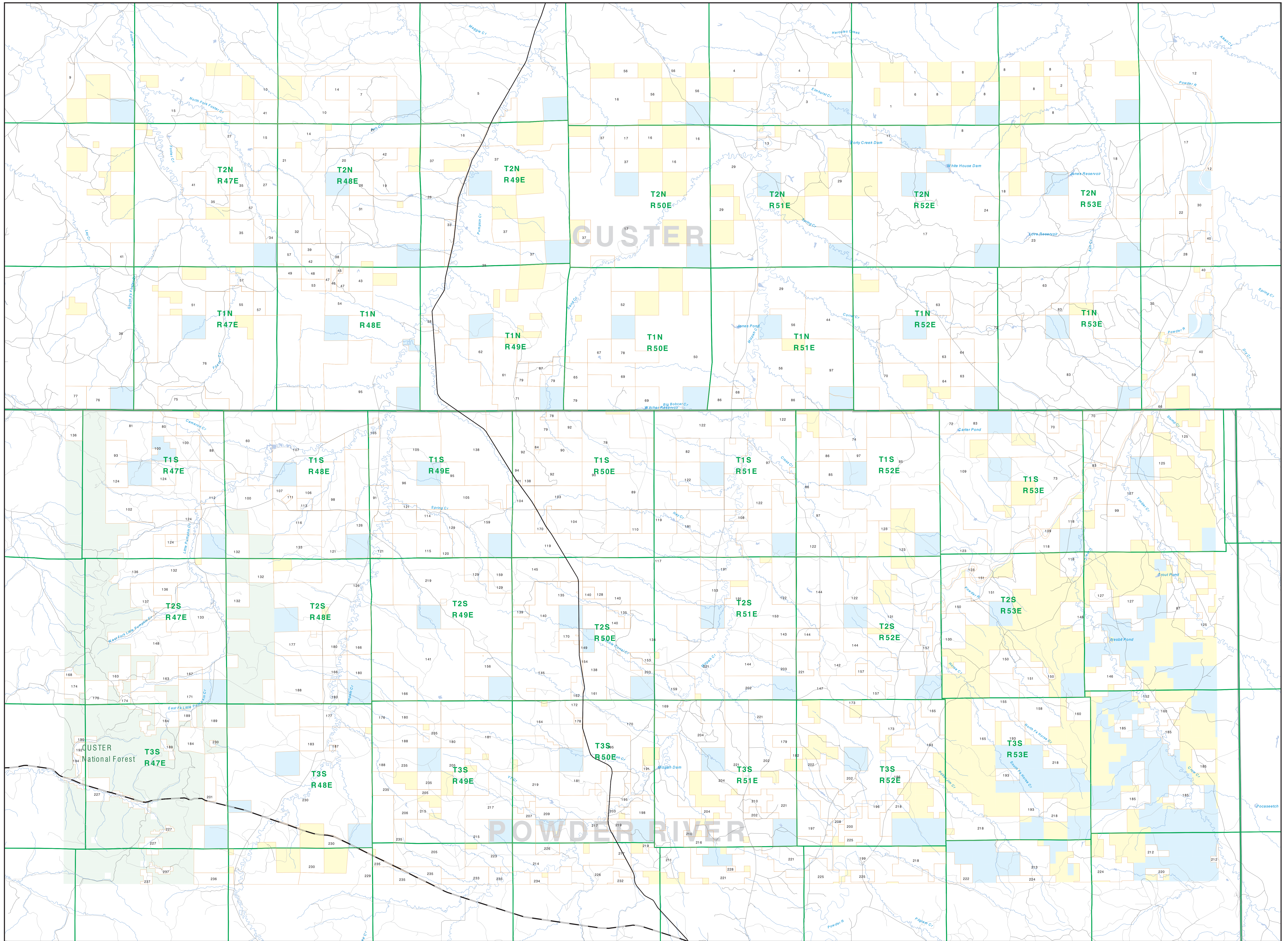


Private Land Ownership Identification

POWDERVILLE - (45105b)

Parcel Num: Owner Name, Total Acres



- Private
- Forest Service
- Bureau of Land Management
- National Park Service
- Other Federal Land
- Fish and Wildlife Service
- State Lands
- Local Govt
- Native American
- MFWP - WMA
- Lake/Reservoir
- Interstate
- Secondary Highway
- Highway
- Road
- Primitive Road
- River
- Stream/Creek
- Intermittent Creek
- Township
- County Border
- Fish Wildlife & Parks Wildlife Management Area

NOTE:
 Not all legend items may appear on this map. Features shown on this map do not imply public access to any lands. The status data displayed on this map may not be complete and may change due to boundary location and/or zoning.

DISCLAIMER:
 The Montana Natural Heritage Program, MT State Library, MT Dept of Administration and MT Dept of Revenue make no representation or warranties whatsoever with respect to the accuracy or completeness of the data contained in these maps and assume no responsibility for the suitability of these data for a particular purpose. These agencies will be liable for any damages incurred as a result of errors displayed here. The ownership boundaries displayed on this map are not based on land survey data and are not a substitute for property surveys. This map depicts public and private land ownership information derived from several sources and continues to be corrected and updated.

SOURCES / ACKNOWLEDGEMENTS

This map was produced as a joint effort between the MT Dept of Fish, Wildlife and Parks (FWP) and the Montana Natural Resource Information System (NRIS) of the MT State Library in response to Montana Code Annotated 87-2-308, which directs the FWP to "... work cooperatively with all state and federal land management agencies, to develop accurate land ownership maps... in the State".

The public land data is from the MT Natural Heritage Program lands stewardship data collection. Much of this data was originally digitized by the Bureau of Land Management (BLM) from 1:100,000 scale BLM Surface Management Data maps. Additional information, corrections and updates (especially for tribal lands and gramin lands) were added by the University of Montana, Wildlife Spatial Analysis Unit, during 1998-1999. Since 1999, the Montana Natural Heritage Program has made numerous updates and corrections (especially for state trust lands, Montana Fish, Wildlife & Parks areas, US Fish & Wildlife Service areas, and conservation easements). These data were based on data supplied by the various public agencies and land trusts, and have not been verified against county of Montana Department of Revenue records.

The private land data were developed for the Montana Cadastral Database Project. These data are provided through a cooperative effort between the Montana Department of Administration (ODA), the Montana Department of Revenue (DOR), other state agencies, local governments, USDOI/BLM and private enterprise. Land data on this map represent single ownership of contiguous parcels that are at least 40 acres in size. The ODA maintains the GIS database layer and the DOR maintains the private ownership information.

The base scale for the public ownership data is 1:100,000, though many of the recent redline mapsource data digitized from 1:24,000 scale maps or survey data. Private ownership data is accurate to scales of 1:24,000 or smaller.

Map produced September 2008 with ownership data current as of August 2008.

USGS 100,000 Scale Quadrangle Index

81180	81190	81200	81210	81220	81230	81240	81250	81260	81270	81280	81290	81300
1180	11810	11820	11830	11840	11850	11860	11870	11880	11890	11900	11910	11920
10	1010	1020	1030	1040	1050	1060	1070	1080	1090	1100	1110	1120
421100	421110	421120	421130	421140	421150	421160	421170	421180	421190	421200	421210	421220
421100	421110	421120	421130	421140	421150	421160	421170	421180	421190	421200	421210	421220
421100	421110	421120	421130	421140	421150	421160	421170	421180	421190	421200	421210	421220
421100	421110	421120	421130	421140	421150	421160	421170	421180	421190	421200	421210	421220