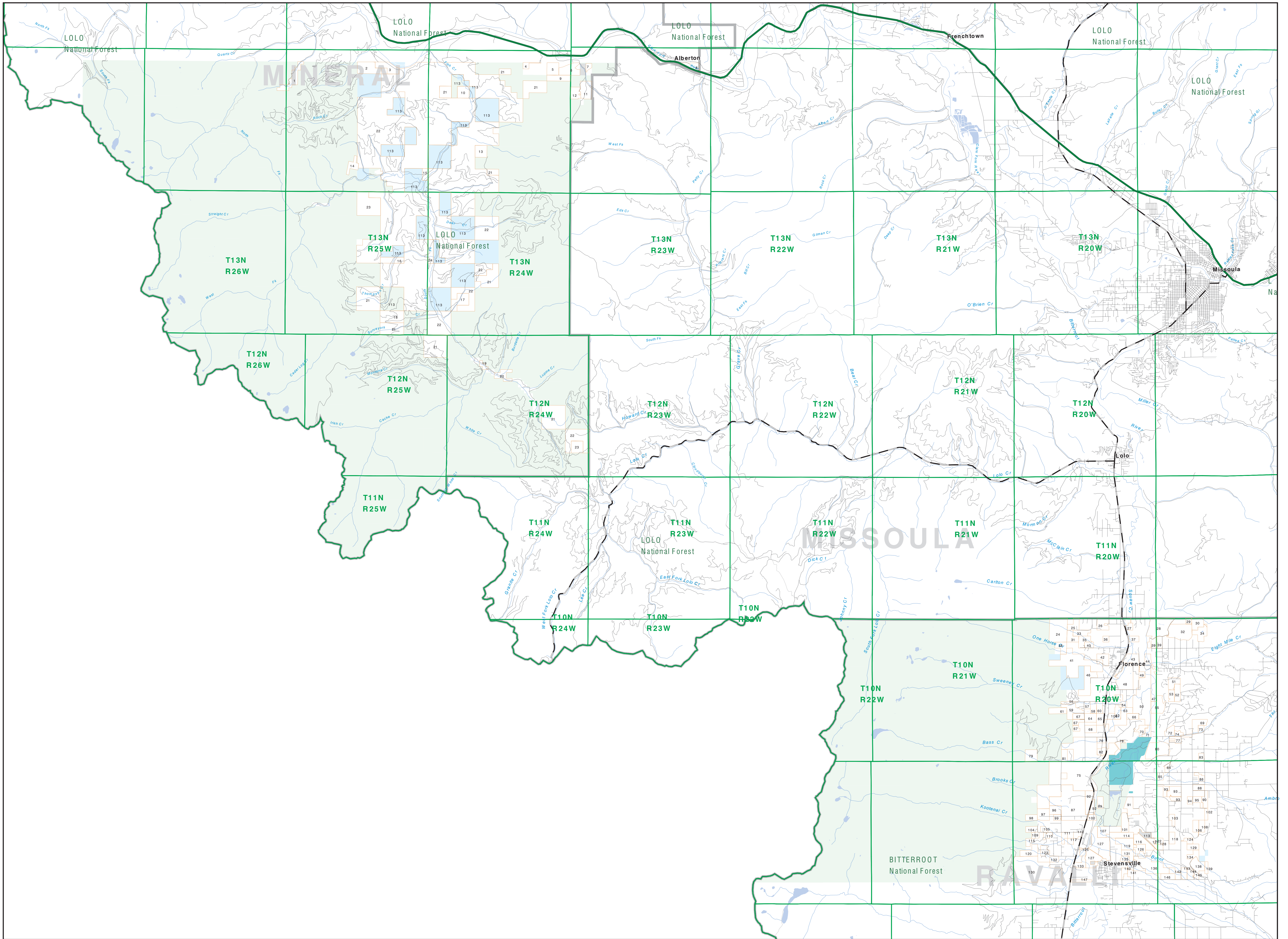


Private Land Ownership Identification

MISSOULA WEST - (46114b)



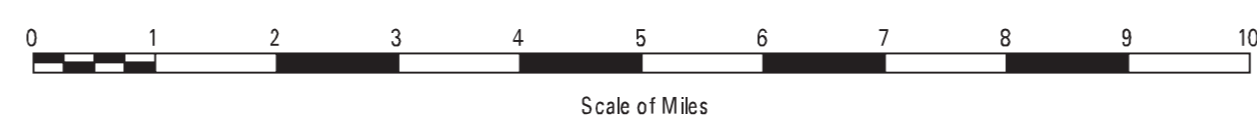
1. CATES THOMAS G. GLORES G. 241
2. FLYNN CREEK LUMBER COMPANY P. 277
3. SIMON LUMBER COMPANY 203
4. WILSON TRAIL PARTNERS 46
5. YOUNG DAN ETL 188
6. BECK LIP 132
7. TROTTMAN ANN 42
8. LEWIS & CLARK LIMITED PARTNERS 115
9. YOUNG DANAL JAMES 190
10. YOUNG DANAL AND WENDY 105
11. LANTIERO WALTER ANN 228
12. STUBBS MARION JR AND TERRA P. 127
13. KILBRO MARY E III AND DALEY A. 105
14. BOCCO FAMILY TRUST 120
15. BARBCK BARCEL EARH AND DEL. 80
16. FLYNN CREEK LUMBER COMPANY P. 202
17. WILKINSON GEORGE W. 241
18. FLYNN CREEK LUMBER COMPANY P. 202
19. MICKY SCOTT T. SHARV. J. JOSEPH. 49
20. WILSON GEORGE W. 241
21. FLYNN CREEK LUMBER COMPANY P. 202
22. FLYNN CREEK LUMBER COMPANY P. 202
23. FLYNN CREEK LUMBER COMPANY P. 202
24. FLYNN CREEK LUMBER COMPANY P. 202
25. FLYNN CREEK LUMBER COMPANY P. 202
26. FLYNN CREEK LUMBER COMPANY P. 202
27. FLYNN CREEK LUMBER COMPANY P. 202
28. FLYNN CREEK LUMBER COMPANY P. 202
29. FLYNN CREEK LUMBER COMPANY P. 202
30. FLYNN CREEK LUMBER COMPANY P. 202
31. FLYNN CREEK LUMBER COMPANY P. 202
32. FLYNN CREEK LUMBER COMPANY P. 202
33. FLYNN CREEK LUMBER COMPANY P. 202
34. FLYNN CREEK LUMBER COMPANY P. 202
35. FLYNN CREEK LUMBER COMPANY P. 202
36. FLYNN CREEK LUMBER COMPANY P. 202
37. FLYNN CREEK LUMBER COMPANY P. 202
38. FLYNN CREEK LUMBER COMPANY P. 202
39. FLYNN CREEK LUMBER COMPANY P. 202
40. FLYNN CREEK LUMBER COMPANY P. 202
41. FLYNN CREEK LUMBER COMPANY P. 202
42. FLYNN CREEK LUMBER COMPANY P. 202
43. FLYNN CREEK LUMBER COMPANY P. 202
44. FLYNN CREEK LUMBER COMPANY P. 202
45. FLYNN CREEK LUMBER COMPANY P. 202
46. FLYNN CREEK LUMBER COMPANY P. 202
47. FLYNN CREEK LUMBER COMPANY P. 202
48. FLYNN CREEK LUMBER COMPANY P. 202
49. FLYNN CREEK LUMBER COMPANY P. 202
50. FLYNN CREEK LUMBER COMPANY P. 202
51. FLYNN CREEK LUMBER COMPANY P. 202
52. FLYNN CREEK LUMBER COMPANY P. 202
53. FLYNN CREEK LUMBER COMPANY P. 202
54. FLYNN CREEK LUMBER COMPANY P. 202
55. FLYNN CREEK LUMBER COMPANY P. 202
56. FLYNN CREEK LUMBER COMPANY P. 202
57. FLYNN CREEK LUMBER COMPANY P. 202
58. FLYNN CREEK LUMBER COMPANY P. 202
59. FLYNN CREEK LUMBER COMPANY P. 202
60. FLYNN CREEK LUMBER COMPANY P. 202
61. FLYNN CREEK LUMBER COMPANY P. 202
62. FLYNN CREEK LUMBER COMPANY P. 202
63. FLYNN CREEK LUMBER COMPANY P. 202
64. FLYNN CREEK LUMBER COMPANY P. 202
65. FLYNN CREEK LUMBER COMPANY P. 202
66. FLYNN CREEK LUMBER COMPANY P. 202
67. FLYNN CREEK LUMBER COMPANY P. 202
68. FLYNN CREEK LUMBER COMPANY P. 202
69. FLYNN CREEK LUMBER COMPANY P. 202
70. FLYNN CREEK LUMBER COMPANY P. 202
71. FLYNN CREEK LUMBER COMPANY P. 202
72. FLYNN CREEK LUMBER COMPANY P. 202
73. FLYNN CREEK LUMBER COMPANY P. 202
74. FLYNN CREEK LUMBER COMPANY P. 202
75. FLYNN CREEK LUMBER COMPANY P. 202
76. FLYNN CREEK LUMBER COMPANY P. 202
77. FLYNN CREEK LUMBER COMPANY P. 202
78. FLYNN CREEK LUMBER COMPANY P. 202
79. FLYNN CREEK LUMBER COMPANY P. 202
80. FLYNN CREEK LUMBER COMPANY P. 202
81. FLYNN CREEK LUMBER COMPANY P. 202
82. FLYNN CREEK LUMBER COMPANY P. 202
83. FLYNN CREEK LUMBER COMPANY P. 202
84. FLYNN CREEK LUMBER COMPANY P. 202
85. FLYNN CREEK LUMBER COMPANY P. 202
86. FLYNN CREEK LUMBER COMPANY P. 202
87. FLYNN CREEK LUMBER COMPANY P. 202
88. FLYNN CREEK LUMBER COMPANY P. 202
89. FLYNN CREEK LUMBER COMPANY P. 202
90. FLYNN CREEK LUMBER COMPANY P. 202
91. FLYNN CREEK LUMBER COMPANY P. 202
92. FLYNN CREEK LUMBER COMPANY P. 202
93. FLYNN CREEK LUMBER COMPANY P. 202
94. FLYNN CREEK LUMBER COMPANY P. 202
95. FLYNN CREEK LUMBER COMPANY P. 202
96. FLYNN CREEK LUMBER COMPANY P. 202
97. FLYNN CREEK LUMBER COMPANY P. 202
98. FLYNN CREEK LUMBER COMPANY P. 202
99. FLYNN CREEK LUMBER COMPANY P. 202
100. FLYNN CREEK LUMBER COMPANY P. 202

Legend

- Private
- State Lands
- Forest Service
- Bureau of Land Management
- National Park Service
- Other Federal Land
- Fish and Wildlife Service
- Road
- Primitive Road
- River
- Stream/Creek
- Intermittent Creek
- Township
- County Border
- Fish Wildlife & Parks Wildlife Management Area
- Native American
- MFWP - WMA
- Lake/Reservoir
- Interstate
- Secondary Highway
- Highway

NOTES:
 Not all legend items may appear on the map. Features shown on the map do not imply public access to any lands. The land status data displayed on this map may not be complete and may contain errors in boundary locations and/or coding.

DISCLAIMERS:
 The MT Natural Heritage Program, MT State Library, MT Dept. of Administration and MT Dept. of Revenue make no representations or warranties whatsoever with respect to the accuracy or completeness of the data contained in these maps and assume no responsibility for the suitability of these data for a particular purpose. These agencies will not be liable for any damages incurred as a result of errors displayed here. The ownership boundaries displayed on the map are not based on land survey data and are not a substitute for property surveys. This map displays public and private land ownership information derived from several sources and continues to be corrected and updated.



SOURCES / ACKNOWLEDGEMENTS

This map was produced as a joint effort between the MT Dept. of Fish, Wildlife and Parks (FWP) and the Montana Natural Resource Information System (NRIS) of the MT State Library in response to Montana Code Annotated 87-308, which directs the FWP to "work cooperatively with all state and federal land management agencies... to develop accurate land ownership maps... in the State".

The public land data is from the MT Natural Heritage Program land stewardship data collection. Much of this data was originally digitized by the Bureau of Land Management (BLM) from 1:100,000 scale BLM Surface Management Status maps. Additional information, corrections and updates (especially for tribal lands and private lands) were added by the University of Montana, Wildlife Spatial Analysis Unit, during 1990-1998. Since 1998, the Montana Natural Heritage Program has made numerous updates and corrections (especially for state trust lands, Montana Fish, Wildlife & Parks areas, US Fish & Wildlife Service areas, and conservation easements). These data are based on data supplied by the various public agencies and land trusts, and have not been verified against county or Montana Department of Revenue records.

The private land data were developed for the Montana Cadastral Database Project. These data are provided through a cooperative effort between the Montana Department of Administration (DOA), the Montana Department of Revenue (DOR), other state agencies, local governments, USDI BLM and private enterprise. Lands depicted on this map represent single ownership of contiguous parcels that are at least 60 acres in size. The DOA maintains the GIS ownership layer and the DOR maintains the private ownership information.

The base scale for the public ownership data is 1:100,000. Rough many of the recent data incorporate data digitized from 1:24,000 scale maps of survey data. Private ownership data is accurate to scales of 1:24,000 or smaller.

Map produced September 2008 with ownership data current as of August 2008.

USGS 100,000 Scale Quadrangle Index

8180	8185	8190	8195	8200	8205	8210	8215	8220	8225	8230	8235	8240	8245	8250	8255	8260	8265	8270	8275	8280	8285	8290	8295	8300	8305	8310	8315	8320	8325	8330	8335	8340	8345	8350	8355	8360	8365	8370	8375	8380	8385	8390	8395	8400	8405	8410	8415	8420	8425	8430	8435	8440	8445	8450	8455	8460	8465	8470	8475	8480	8485	8490	8495	8500	8505	8510	8515	8520	8525	8530	8535	8540	8545	8550	8555	8560	8565	8570	8575	8580	8585	8590	8595	8600	8605	8610	8615	8620	8625	8630	8635	8640	8645	8650	8655	8660	8665	8670	8675	8680	8685	8690	8695	8700	8705	8710	8715	8720	8725	8730	8735	8740	8745	8750	8755	8760	8765	8770	8775	8780	8785	8790	8795	8800	8805	8810	8815	8820	8825	8830	8835	8840	8845	8850	8855	8860	8865	8870	8875	8880	8885	8890	8895	8900	8905	8910	8915	8920	8925	8930	8935	8940	8945	8950	8955	8960	8965	8970	8975	8980	8985	8990	8995	9000	9005	9010	9015	9020	9025	9030	9035	9040	9045	9050	9055	9060	9065	9070	9075	9080	9085	9090	9095	9100	9105	9110	9115	9120	9125	9130	9135	9140	9145	9150	9155	9160	9165	9170	9175	9180	9185	9190	9195	9200	9205	9210	9215	9220	9225	9230	9235	9240	9245	9250	9255	9260	9265	9270	9275	9280	9285	9290	9295	9300	9305	9310	9315	9320	9325	9330	9335	9340	9345	9350	9355	9360	9365	9370	9375	9380	9385	9390	9395	9400	9405	9410	9415	9420	9425	9430	9435	9440	9445	9450	9455	9460	9465	9470	9475	9480	9485	9490	9495	9500	9505	9510	9515	9520	9525	9530	9535	9540	9545	9550	9555	9560	9565	9570	9575	9580	9585	9590	9595	9600	9605	9610	9615	9620	9625	9630	9635	9640	9645	9650	9655	9660	9665	9670	9675	9680	9685	9690	9695	9700	9705	9710	9715	9720	9725	9730	9735	9740	9745	9750	9755	9760	9765	9770	9775	9780	9785	9790	9795	9800	9805	9810	9815	9820	9825	9830	9835	9840	9845	9850	9855	9860	9865	9870	9875	9880	9885	9890	9895	9900	9905	9910	9915	9920	9925	9930	9935	9940	9945	9950	9955	9960	9965	9970	9975	9980	9985	9990	9995	10000
------	------	------	------	------	------	------	------	------	------	------	------	------	------	------	------	------	------	------	------	------	------	------	------	------	------	------	------	------	------	------	------	------	------	------	------	------	------	------	------	------	------	------	------	------	------	------	------	------	------	------	------	------	------	------	------	------	------	------	------	------	------	------	------	------	------	------	------	------	------	------	------	------	------	------	------	------	------	------	------	------	------	------	------	------	------	------	------	------	------	------	------	------	------	------	------	------	------	------	------	------	------	------	------	------	------	------	------	------	------	------	------	------	------	------	------	------	------	------	------	------	------	------	------	------	------	------	------	------	------	------	------	------	------	------	------	------	------	------	------	------	------	------	------	------	------	------	------	------	------	------	------	------	------	------	------	------	------	------	------	------	------	------	------	------	------	------	------	------	------	------	------	------	------	------	------	------	------	------	------	------	------	------	------	------	------	------	------	------	------	------	------	------	------	------	------	------	------	------	------	------	------	------	------	------	------	------	------	------	------	------	------	------	------	------	------	------	------	------	------	------	------	------	------	------	------	------	------	------	------	------	------	------	------	------	------	------	------	------	------	------	------	------	------	------	------	------	------	------	------	------	------	------	------	------	------	------	------	------	------	------	------	------	------	------	------	------	------	------	------	------	------	------	------	------	------	------	------	------	------	------	------	------	------	------	------	------	------	------	------	------	------	------	------	------	------	------	------	------	------	------	------	------	------	------	------	------	------	------	------	------	------	------	------	------	------	------	------	------	------	------	------	------	------	------	------	------	------	------	------	------	------	------	------	------	------	------	------	------	------	------	------	------	------	------	------	------	------	------	------	------	------	------	------	------	------	------	------	------	------	------	------	------	------	-------