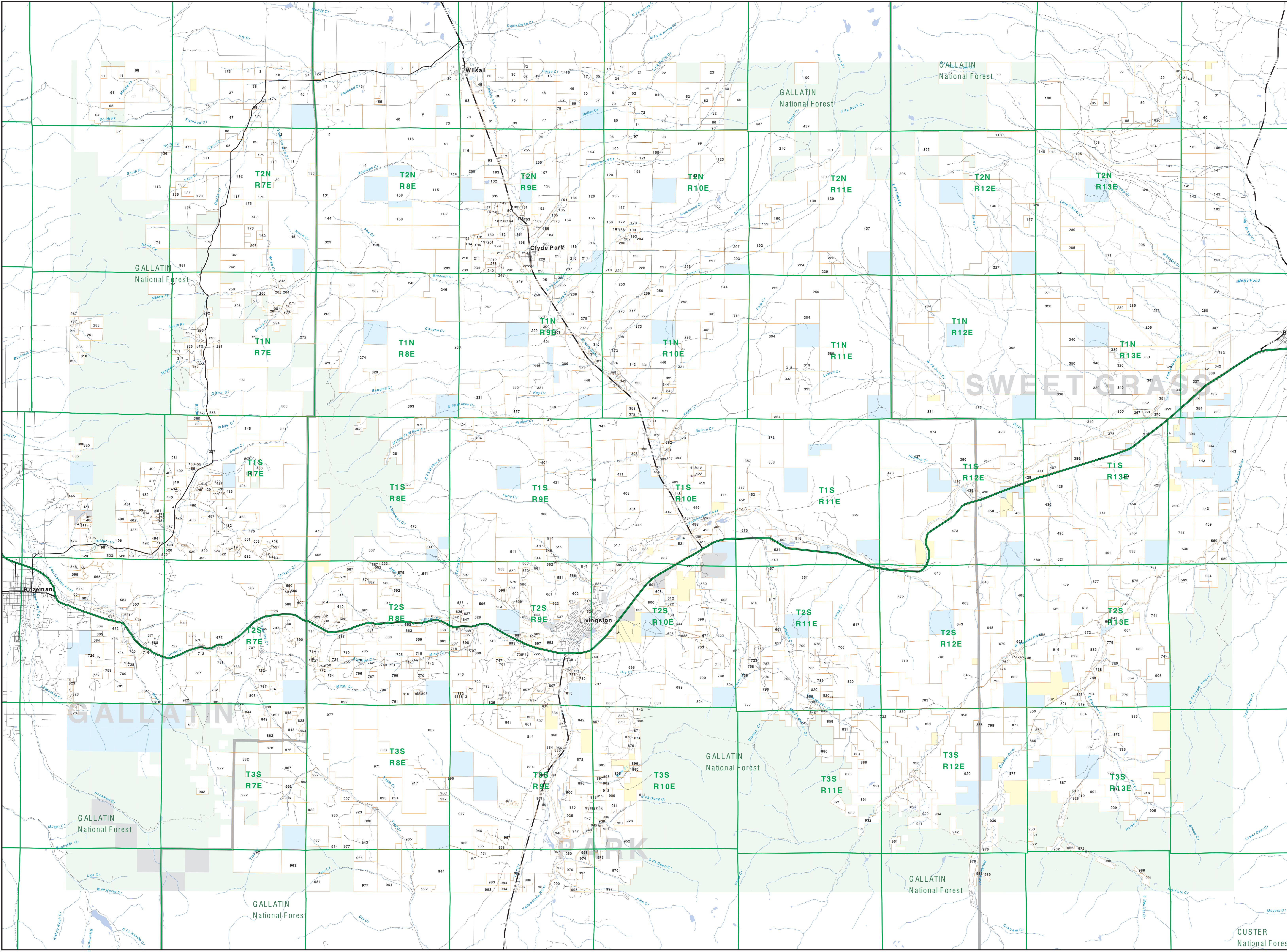


Private Land Ownership Identification

LIVINGSTON - (45110b)

Parcel Num. Owner Name, Total Acres



Private Land Ownership Identification

Legend:

- Private
- State Lands
- Forest Service
- Bureau of Land Management
- National Park Service
- Other Federal Land
- Fish and Wildlife Service
- Local Govt
- Native American
- MFWP - WMA
- Lake/Reservoir
- Interstate
- Secondary Highway
- Highway
- Road
- Primitive Road
- River
- Stream/Creek
- Intermittent Creek
- Township
- County Border
- Fish Wildlife & Parks Wildlife Management Area

NOTES:

Not all legend items may appear on this map. Features shown on this map do not imply public access to any lands. The location of these data is for informational purposes only and does not imply any ownership or boundary locations or zoning.

SOURCES/ACKNOWLEDGEMENTS:

The private land data were developed for the Montana Database Project (MDBP) by the Montana Department of Fish, Wildlife & Parks (MFWP) and the Montana Natural Resource Information System (MNRIS) in cooperation with the Montana Department of Administration (MDA), the Montana Department of Forestry (MDF), the Montana Department of Transportation (MDT), the Montana Department of Agriculture (MDA), the Montana Department of Labor and Industry (MDLI), the Montana Department of Health Services (MDHS), the Montana Department of Environmental Quality (MDEQ), the Montana Department of Public Safety (MPS), the Montana Department of Corrections (MDC), the Montana Department of Social Services (MDS), the Montana Department of Community Development (MDCD), the Montana Department of Economic Development (MDED), the Montana Department of Energy and Natural Resources (MDENR), the Montana Department of Geology and Mineral Resources (MDGMR), the Montana Department of Insurance (MDI), the Montana Department of Justice (MDJ), the Montana Department of Labor (MDL), the Montana Department of Military and Veterans Affairs (MDMVA), the Montana Department of Parks and Recreation (MDPR), the Montana Department of Public Health (MDPH), the Montana Department of Revenue (MDR), the Montana Department of Transportation (MDT), the Montana Department of University and State Lands (MDUSL), the Montana Department of Wildlife Resources (MDWR), the Montana Department of Workforce Services (MDSWS), the Montana Department of Youth and Family Services (MDYFS), the Montana Department of Corrections (MDC), the Montana Department of Social Services (MDS), the Montana Department of Community Development (MDCD), the Montana Department of Economic Development (MDED), the Montana Department of Energy and Natural Resources (MDENR), the Montana Department of Geology and Mineral Resources (MDGMR), the Montana Department of Insurance (MDI), the Montana Department of Justice (MDJ), the Montana Department of Labor (MDL), the Montana Department of Military and Veterans Affairs (MDMVA), the Montana Department of Parks and Recreation (MDPR), the Montana Department of Public Health (MDPH), the Montana Department of Revenue (MDR), the Montana Department of Transportation (MDT), the Montana Department of University and State Lands (MDUSL), the Montana Department of Wildlife Resources (MDWR), the Montana Department of Workforce Services (MDSWS), the Montana Department of Youth and Family Services (MDYFS).

The public land data from the MFWP Natural Heritage Program land stewardship data collection. Much of the data was originally digitized by the Bureau of Land Management (BLM) and the Montana Department of Forestry (MDF) in cooperation with the Montana Department of Administration (MDA), the Montana Department of Forestry (MDF), the Montana Department of Transportation (MDT), the Montana Department of Agriculture (MDA), the Montana Department of Labor and Industry (MDLI), the Montana Department of Health Services (MDHS), the Montana Department of Environmental Quality (MDEQ), the Montana Department of Public Safety (MPS), the Montana Department of Corrections (MDC), the Montana Department of Social Services (MDS), the Montana Department of Community Development (MDCD), the Montana Department of Economic Development (MDED), the Montana Department of Energy and Natural Resources (MDENR), the Montana Department of Geology and Mineral Resources (MDGMR), the Montana Department of Insurance (MDI), the Montana Department of Justice (MDJ), the Montana Department of Labor (MDL), the Montana Department of Military and Veterans Affairs (MDMVA), the Montana Department of Parks and Recreation (MDPR), the Montana Department of Public Health (MDPH), the Montana Department of Revenue (MDR), the Montana Department of Transportation (MDT), the Montana Department of University and State Lands (MDUSL), the Montana Department of Wildlife Resources (MDWR), the Montana Department of Workforce Services (MDSWS), the Montana Department of Youth and Family Services (MDYFS).

The base data for the public ownership data is 1:100,000. Many of the parcels are incorporated data digitized from 1:250,000 scale maps of survey data. Private ownership data is accurate to scales of 1:250,000 or better.

Map produced September 2008 with ownership data current as of August 2008.

USGS 100,000 Scale Quadrangle Index

45110A	45110B	45110C	45110D	45110E	45110F	45110G	45110H	45110I	45110J	45110K	45110L	45110M	45110N	45110O	45110P	45110Q	45110R	45110S	45110T	45110U	45110V	45110W	45110X	45110Y	45110Z
45110A	45110B	45110C	45110D	45110E	45110F	45110G	45110H	45110I	45110J	45110K	45110L	45110M	45110N	45110O	45110P	45110Q	45110R	45110S	45110T	45110U	45110V	45110W	45110X	45110Y	45110Z