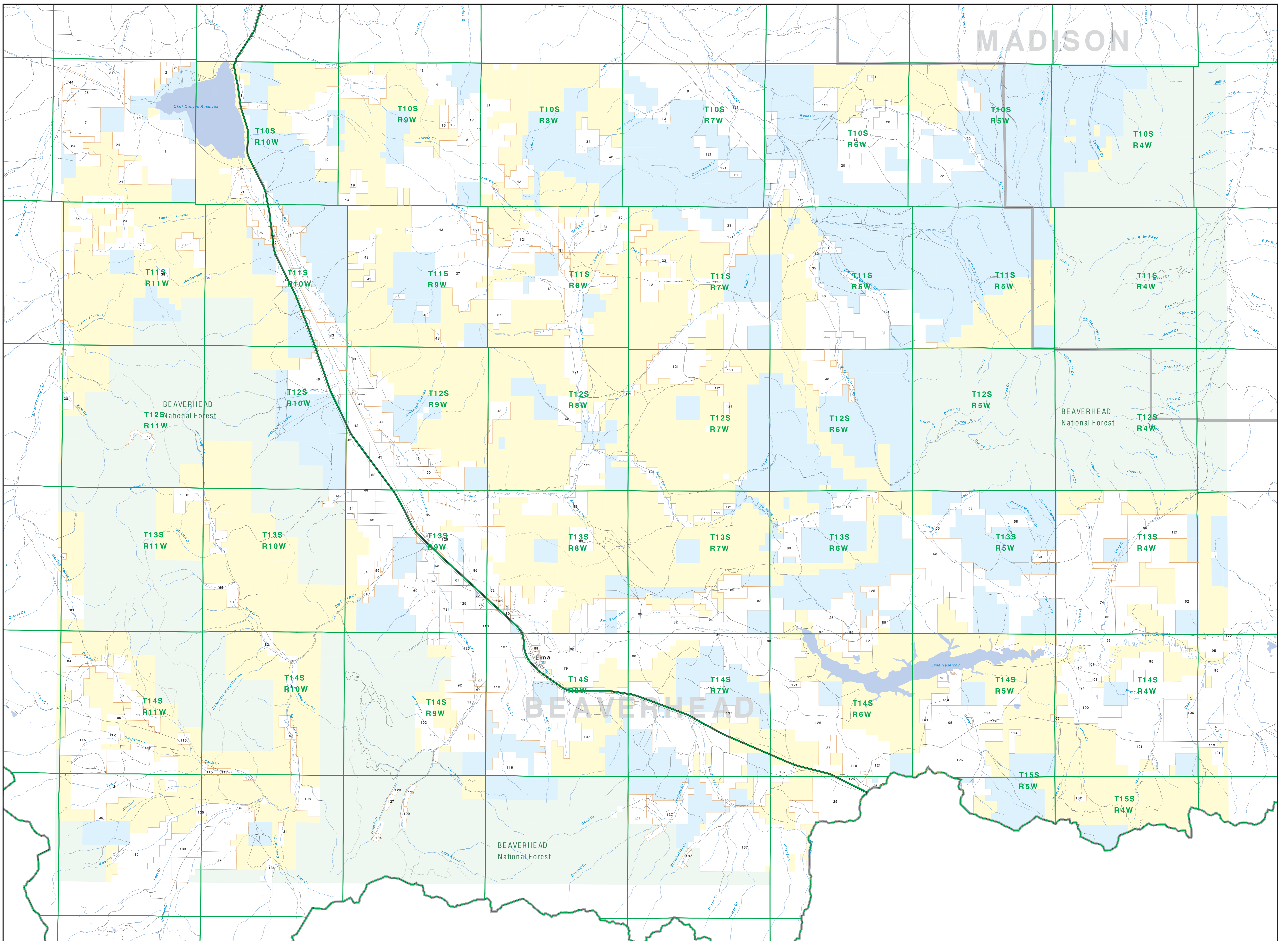


Private Land Ownership Identification

LIMA - (44112b)



- 1: PETERS ROGER D. 604
- 2: TROY THOMPSON LLC 200
- 3: WELDON JOSEPH R DAVID A. 150
- 4: WELDON JOSEPH R DAVID A. 150
- 5: CLARK CANTON RANCH LLC 2782
- 6: CLARK CANTON RANCH LLC 2782
- 7: WELDON JOSEPH R. 1375
- 8: STON WILLIAM F. 42
- 9: CONOVER JOHN L. JR. 818
- 10: ROBINSON VICKI L. 150
- 11: ROY DELL RANCH INC. 675
- 12: MEINE ROBERT. 1038
- 13: CONOVER JOHN L. JR. ETAL. 843
- 14: LAMB LORNA K. 41
- 15: MEINE ROBERT. 1038
- 16: MEINE ROBERT. 1038
- 17: CONOVER JOHN L. JR. 840
- 18: CONOVER JOHN L. JR. 840
- 19: CONOVER JOHN L. JR. 840
- 20: CONOVER JOHN L. JR. 840
- 21: CONOVER JOHN L. JR. 840
- 22: CONOVER JOHN L. JR. 840
- 23: CONOVER JOHN L. JR. 840
- 24: CONOVER JOHN L. JR. 840
- 25: CONOVER JOHN L. JR. 840
- 26: CONOVER JOHN L. JR. 840
- 27: CONOVER JOHN L. JR. 840
- 28: CONOVER JOHN L. JR. 840
- 29: CONOVER JOHN L. JR. 840
- 30: CONOVER JOHN L. JR. 840
- 31: CONOVER JOHN L. JR. 840
- 32: CONOVER JOHN L. JR. 840
- 33: CONOVER JOHN L. JR. 840
- 34: CONOVER JOHN L. JR. 840
- 35: CONOVER JOHN L. JR. 840
- 36: CONOVER JOHN L. JR. 840
- 37: CONOVER JOHN L. JR. 840
- 38: CONOVER JOHN L. JR. 840
- 39: CONOVER JOHN L. JR. 840
- 40: CONOVER JOHN L. JR. 840
- 41: CONOVER JOHN L. JR. 840
- 42: CONOVER JOHN L. JR. 840
- 43: CONOVER JOHN L. JR. 840
- 44: CONOVER JOHN L. JR. 840
- 45: CONOVER JOHN L. JR. 840
- 46: CONOVER JOHN L. JR. 840
- 47: CONOVER JOHN L. JR. 840
- 48: CONOVER JOHN L. JR. 840
- 49: CONOVER JOHN L. JR. 840
- 50: CONOVER JOHN L. JR. 840
- 51: CONOVER JOHN L. JR. 840
- 52: CONOVER JOHN L. JR. 840
- 53: CONOVER JOHN L. JR. 840
- 54: CONOVER JOHN L. JR. 840
- 55: CONOVER JOHN L. JR. 840
- 56: CONOVER JOHN L. JR. 840
- 57: CONOVER JOHN L. JR. 840
- 58: CONOVER JOHN L. JR. 840
- 59: CONOVER JOHN L. JR. 840
- 60: CONOVER JOHN L. JR. 840
- 61: CONOVER JOHN L. JR. 840
- 62: CONOVER JOHN L. JR. 840
- 63: CONOVER JOHN L. JR. 840
- 64: CONOVER JOHN L. JR. 840
- 65: CONOVER JOHN L. JR. 840
- 66: CONOVER JOHN L. JR. 840
- 67: CONOVER JOHN L. JR. 840
- 68: CONOVER JOHN L. JR. 840
- 69: CONOVER JOHN L. JR. 840
- 70: CONOVER JOHN L. JR. 840
- 71: CONOVER JOHN L. JR. 840
- 72: CONOVER JOHN L. JR. 840
- 73: CONOVER JOHN L. JR. 840
- 74: CONOVER JOHN L. JR. 840
- 75: CONOVER JOHN L. JR. 840
- 76: CONOVER JOHN L. JR. 840
- 77: CONOVER JOHN L. JR. 840
- 78: CONOVER JOHN L. JR. 840
- 79: CONOVER JOHN L. JR. 840
- 80: CONOVER JOHN L. JR. 840
- 81: CONOVER JOHN L. JR. 840
- 82: CONOVER JOHN L. JR. 840
- 83: CONOVER JOHN L. JR. 840
- 84: CONOVER JOHN L. JR. 840
- 85: CONOVER JOHN L. JR. 840
- 86: CONOVER JOHN L. JR. 840
- 87: CONOVER JOHN L. JR. 840
- 88: CONOVER JOHN L. JR. 840
- 89: CONOVER JOHN L. JR. 840
- 90: CONOVER JOHN L. JR. 840
- 91: CONOVER JOHN L. JR. 840
- 92: CONOVER JOHN L. JR. 840
- 93: CONOVER JOHN L. JR. 840
- 94: CONOVER JOHN L. JR. 840
- 95: CONOVER JOHN L. JR. 840
- 96: CONOVER JOHN L. JR. 840
- 97: CONOVER JOHN L. JR. 840
- 98: CONOVER JOHN L. JR. 840
- 99: CONOVER JOHN L. JR. 840
- 100: CONOVER JOHN L. JR. 840

- Private
- Forest Service
- Bureau of Land Management
- National Park Service
- Other Federal Land
- Fish and Wildlife Service
- State Lands
- Local Govt
- Native American
- MFWP - WMA
- Lake/Reservoir
- Interstate
- Secondary Highway
- Highway
- Road
- Primitive Road
- River
- Stream/Creek
- Intermittent Creek
- Township
- County Border
- Fish Wildlife & Parks Wildlife Management Area

NOTES:
 Not all legend items may appear on this map.
 Features shown on this map do not necessarily have public access to any lands.
 The land status data displayed on this map may not be complete and may contain errors or boundary location and/or coding.
DISCLAIMERS:
 The MT Natural Heritage Program, MT State Library, MT Dept of Administration and MT Dept of Revenue make no representation or warranties whatsoever with respect to the accuracy or completeness of the data contained in these maps and assumes no responsibility for the suitability of these data for a particular purpose. These agencies will not be liable for any damages incurred as a result of errors displayed here. The ownership boundaries displayed on this map are not based on land survey data and are not a substitute for property surveys. This map displays public and private land ownership information derived from several sources and continues to be corrected and updated.

SOURCES / ACKNOWLEDGEMENTS
 This map was produced as a joint effort between the MT Dept of Fish, Wildlife, and Parks (FWP) and the Montana Natural Resource Information System (NRIS) of the MT State Library, in response to Montana Code Annotated 87-2-208, which directs the FWP to "...work cooperatively with all state and federal land management agencies... to develop accurate land ownership maps... in the State".
 The MT Natural Heritage Program, MT State Library, MT Dept of Administration and MT Dept of Revenue make no representation or warranties whatsoever with respect to the accuracy or completeness of the data contained in these maps and assumes no responsibility for the suitability of these data for a particular purpose. These agencies will not be liable for any damages incurred as a result of errors displayed here. The ownership boundaries displayed on this map are not based on land survey data and are not a substitute for property surveys. This map displays public and private land ownership information derived from several sources and continues to be corrected and updated.

The private land data were developed for the Montana Cadastral Database Project. These data are provided through a cooperative effort between the Montana Department of Administration (DMA), the Montana Department of Revenue (DOR), other state agencies, local governments, USFS BLM and private enterprise. Land parcels shown on this map represent single ownership of contiguous parcels that are at least 40 acres in size. The DMA maintains the GIS cadastral layer and the DOR maintains the private ownership information.

The base scale for the public ownership data is 1:100,000, though many of the recent data incorporate data digitized from 1:25,000 scale maps or survey data. Private ownership data is accurate to scales of 1:24,000 or smaller.

Map produced September 2008 with ownership data current as of August 2008.

USGS 100,000 Scale Quadrangle Index

81100	481100	481140	481180	481220	481260	481300	481340	481380	481420	481460	481500	481540	481580	481620	481660	481700	481740	481780	481820	481860	481900	481940	481980
31600	481150	481190	481230	481270	481310	481350	481390	481430	481470	481510	481550	481590	481630	481670	481710	481750	481790	481830	481870	481910	481950	481990	482030
100	471100	471140	471180	471220	471260	471300	471340	471380	471420	471460	471500	471540	471580	471620	471660	471700	471740	471780	471820	471860	471900	471940	471980
	471150	471190	471230	471270	471310	471350	471390	471430	471470	471510	471550	471590	471630	471670	471710	471750	471790	471830	471870	471910	471950	471990	482030
	461100	461140	461180	461220	461260	461300	461340	461380	461420	461460	461500	461540	461580	461620	461660	461700	461740	461780	461820	461860	461900	461940	461980
	461150	461190	461230	461270	461310	461350	461390	461430	461470	461510	461550	461590	461630	461670	461710	461750	461790	461830	461870	461910	461950	461990	482030
	451100	451140	451180	451220	451260	451300	451340	451380	451420	451460	451500	451540	451580	451620	451660	451700	451740	451780	451820	451860	451900	451940	451980
	451150	451190	451230	451270	451310	451350	451390	451430	451470	451510	451550	451590	451630	451670	451710	451750	451790	451830	451870	451910	451950	451990	482030
	441100	441140	441180	441220	441260	441300	441340	441380	441420	441460	441500	441540	441580	441620	441660	441700	441740	441780	441820	441860	441900	441940	441980
	441150	441190	441230	441270	441310	441350	441390	441430	441470	441510	441550	441590	441630	441670	441710	441750	441790	441830	441870	441910	441950	441990	482030