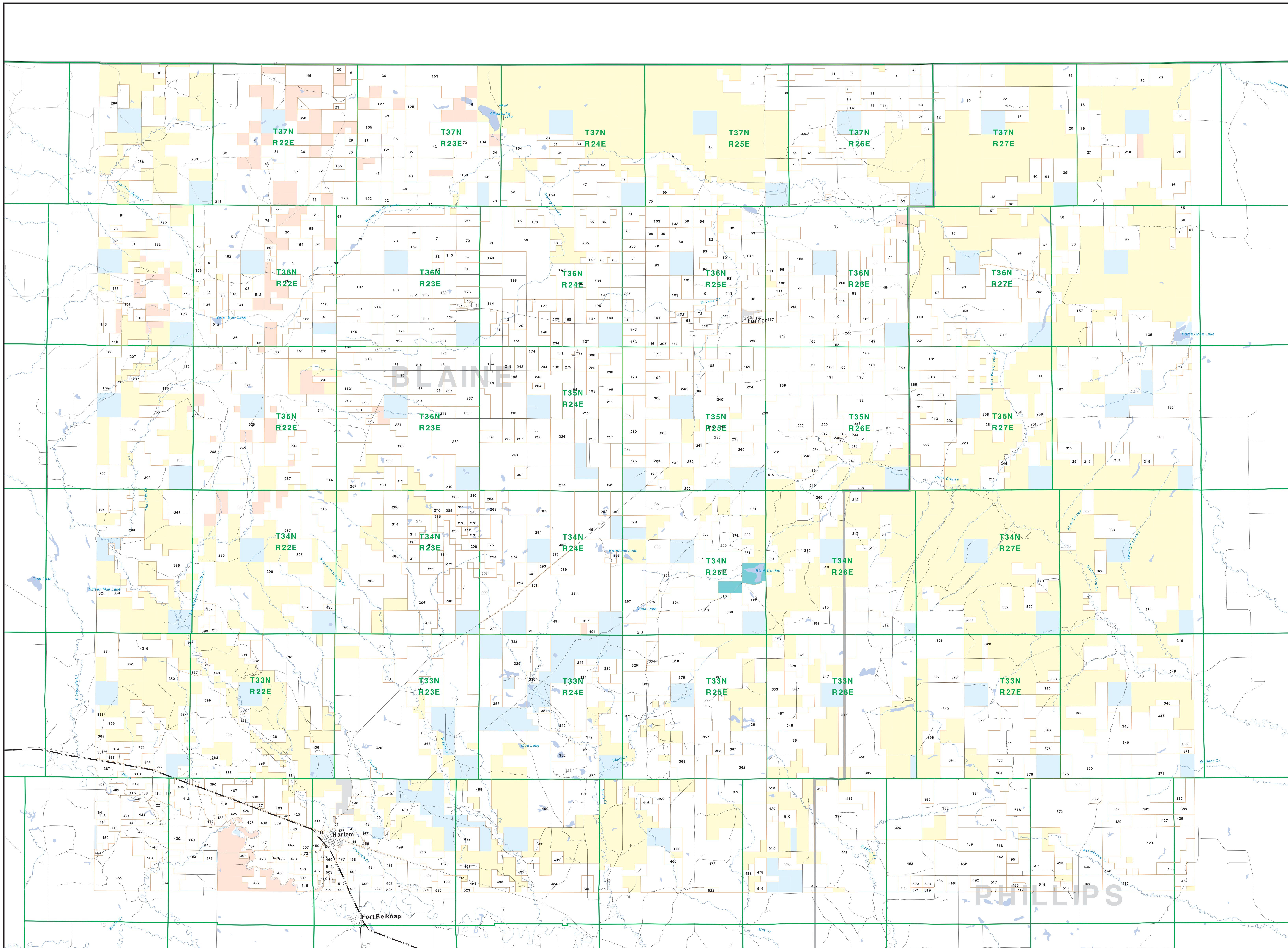


Private Land Ownership Identification

HARLEM - (48108b)

Parcel Num. Owner Name, Total Acres



Legend:

- Private (Yellow)
- State Lands (Light Blue)
- Road (Grey line)
- Primitive Road (Dashed Grey line)
- River (Blue line)
- Stream/Creek (Blue line)
- Intermittent Creek (Blue line)
- Township (Green outline)
- County Border (Thick Blue outline)
- Fish Wildlife & Parks Wildlife Management Area (Blue outline)
- Forest Service (Green)
- Local Govt (Light Blue)
- Bureau of Land Management (Orange)
- Native American (Light Blue)
- National Park Service (Light Blue)
- MFWP - WMA (Light Blue)
- Other Federal Land (Light Blue)
- Lake/Reservoir (Blue)
- Interstate (Thick Green line)
- Secondary Highway (Thin Green line)
- Highway (Thin Grey line)

NOTES:
 Not all legend items may appear on this map.
 Features shown on this map do not constitute public access to any lands.
 The land status data displayed on this map may be incomplete and may contain errors in boundary location and/or coding.
 DISCLAIMER:
 The Montana Heritage Program, MT State Library, MT Dept. of Administration and MT Dept. of Revenue make no representations or warranties whatsoever with respect to the accuracy or completeness of the data contained in these maps and assumes no responsibility for the suitability of the data for a particular purpose. These agencies will not be liable for any damages incurred as a result of using these maps.
 The ownership boundaries displayed on this map are based on land survey data and are not a substitute for property records.
 This map displays public and private land ownership information derived from several sources and continues to be corrected and updated.

SOURCES / ACKNOWLEDGEMENTS
 This map was produced as a joint effort between the MT Dept. of Fish, Wildlife, and Parks (FWP) and the Montana Natural Resource Information System (MNRI) of the Department of Administration (DOA). The Montana Department of Revenue (DOR), other state agencies, local governments, USFS BLM and private wilderness lands. Requests for this map represent single ownership of contiguous parcels that are at least 40 acres in size. The DOA maintains the GIS database layer and the DOR maintains the private ownership information.
 The public data is from the MT Natural Heritage Program land ownership data collection. Much of this data was originally digitized by the Bureau of Land Management (BLM) from 1:50,000 scale BLM Surface Management Status maps. All boundary information was verified by the University of Montana, Wildlife Spatial and Resource Information System (WSRIS). Since 1988, the Montana Natural Heritage Program has made numerous updates and corrections (especially to state trust lands) based on field surveys and other data. The DOA maintains the GIS database and conservation assessments. These data are based on data supplied by the WSRIS and other sources and are not a substitute for property records. The map is not a substitute for property records and should not be used to verify against county or Montana Department of Revenue records.

The private land data were developed for the Montana Cadastral Database Project. These data are provided through a cooperative effort between the Montana Department of Administration (DOA), the Montana Department of Revenue (DOR), other state agencies, local governments, USFS BLM and private wilderness lands. Requests for this map represent single ownership of contiguous parcels that are at least 40 acres in size. The DOA maintains the GIS database layer and the DOR maintains the private ownership information.
 The base scale for the public ownership data is 1:50,000. Though many of the private ownership data are digitized from 1:24,000 scale maps or survey data. Parcel ownership data is accurate to within 1:24,000 or smaller.
 Map produced September 2009 with ownership data current as of August 2008.

USGS 100,000 Scale Quadrangle Index

8110	48110	48111	48112	48113	48114	48115	48116	48117	48118	48119	48120	48121	48122	48123	48124	48125	48126	48127	48128	48129	48130	48131	48132	48133	48134	48135	48136	48137	48138	48139	48140
1150	48150	48151	48152	48153	48154	48155	48156	48157	48158	48159	48160	48161	48162	48163	48164	48165	48166	48167	48168	48169	48170	48171	48172	48173	48174	48175	48176	48177	48178	48179	48180
160	48180	48181	48182	48183	48184	48185	48186	48187	48188	48189	48190	48191	48192	48193	48194	48195	48196	48197	48198	48199	48200	48201	48202	48203	48204	48205	48206	48207	48208	48209	48210
210	48210	48211	48212	48213	48214	48215	48216	48217	48218	48219	48220	48221	48222	48223	48224	48225	48226	48227	48228	48229	48230	48231	48232	48233	48234	48235	48236	48237	48238	48239	48240
260	48260	48261	48262	48263	48264	48265	48266	48267	48268	48269	48270	48271	48272	48273	48274	48275	48276	48277	48278	48279	48280	48281	48282	48283	48284	48285	48286	48287	48288	48289	48290
310	48310	48311	48312	48313	48314	48315	48316	48317	48318	48319	48320	48321	48322	48323	48324	48325	48326	48327	48328	48329	48330	48331	48332	48333	48334	48335	48336	48337	48338	48339	48340
360	48360	48361	48362	48363	48364	48365	48366	48367	48368	48369	48370	48371	48372	48373	48374	48375	48376	48377	48378	48379	48380	48381	48382	48383	48384	48385	48386	48387	48388	48389	48390
410	48410	48411	48412	48413	48414	48415	48416	48417	48418	48419	48420	48421	48422	48423	48424	48425	48426	48427	48428	48429	48430	48431	48432	48433	48434	48435	48436	48437	48438	48439	48440
460	48460	48461	48462	48463	48464	48465	48466	48467	48468	48469	48470	48471	48472	48473	48474	48475	48476	48477	48478	48479	48480	48481	48482	48483	48484	48485	48486	48487	48488	48489	48490
510	48510	48511	48512	48513	48514	48515	48516	48517	48518	48519	48520	48521	48522	48523	48524	48525	48526	48527	48528	48529	48530	48531	48532	48533	48534	48535	48536	48537	48538	48539	48540
560	48560	48561	48562	48563	48564	48565	48566	48567	48568	48569	48570	48571	48572	48573	48574	48575	48576	48577	48578	48579	48580	48581	48582	48583	48584	48585	48586	48587	48588	48589	48590
610	48610	48611	48612	48613	48614	48615	48616	48617	48618	48619	48620	48621	48622	48623	48624	48625	48626	48627	48628	48629	48630	48631	48632	48633	48634	48635	48636	48637	48638	48639	48640
660	48660	48661	48662	48663	48664	48665	48666	48667	48668	48669	48670	48671	48672	48673	48674	48675	48676	48677	48678	48679	48680	48681	48682	48683	48684	48685	48686	48687	48688	48689	48690
710	48710	48711	48712	48713	48714	48715	48716	48717	48718	48719	48720	48721	48722	48723	48724	48725	48726	48727	48728	48729	48730	48731	48732	48733	48734	48735	48736	48737	48738	48739	48740
760	48760	48761	48762	48763	48764	48765	48766	48767	48768	48769	48770	48771	48772	48773	48774	48775	48776	48777	48778	48779	48780	48781	48782	48783	48784	48785	48786	48787	48788	48789	48790
810	48810	48811	48812	48813	48814	48815	48816	48817	48818	48819	48820	48821	48822	48823	48824	48825	48826	48827	48828	48829	48830	48831	48832	48833	48834	48835	48836	48837	48838	48839	48840
860	48860	48861	48862	48863	48864	48865	48866	48867	48868	48869	48870	48871	48872	48873	48874	48875	48876	48877	48878	48879	48880	48881	48882	48883	48884	48885	48886	48887	48888	48889	48890
910	48910	48911	48912	48913	48914	48915	48916	48917	48918	48919	48920	48921	48922	48923	48924	48925	48926	48927	48928	48929	48930	48931	48932	48933	48934	48935	48936	48937	48938	48939	48940
960	48960	48961	48962	48963	48964	48965	48966	48967	48968	48969	48970	48971	48972	48973	48974	48975	48976	48977	48978	48979	48980	48981	48982	48983	48984	48985	48986	48987	48988	48989	48990