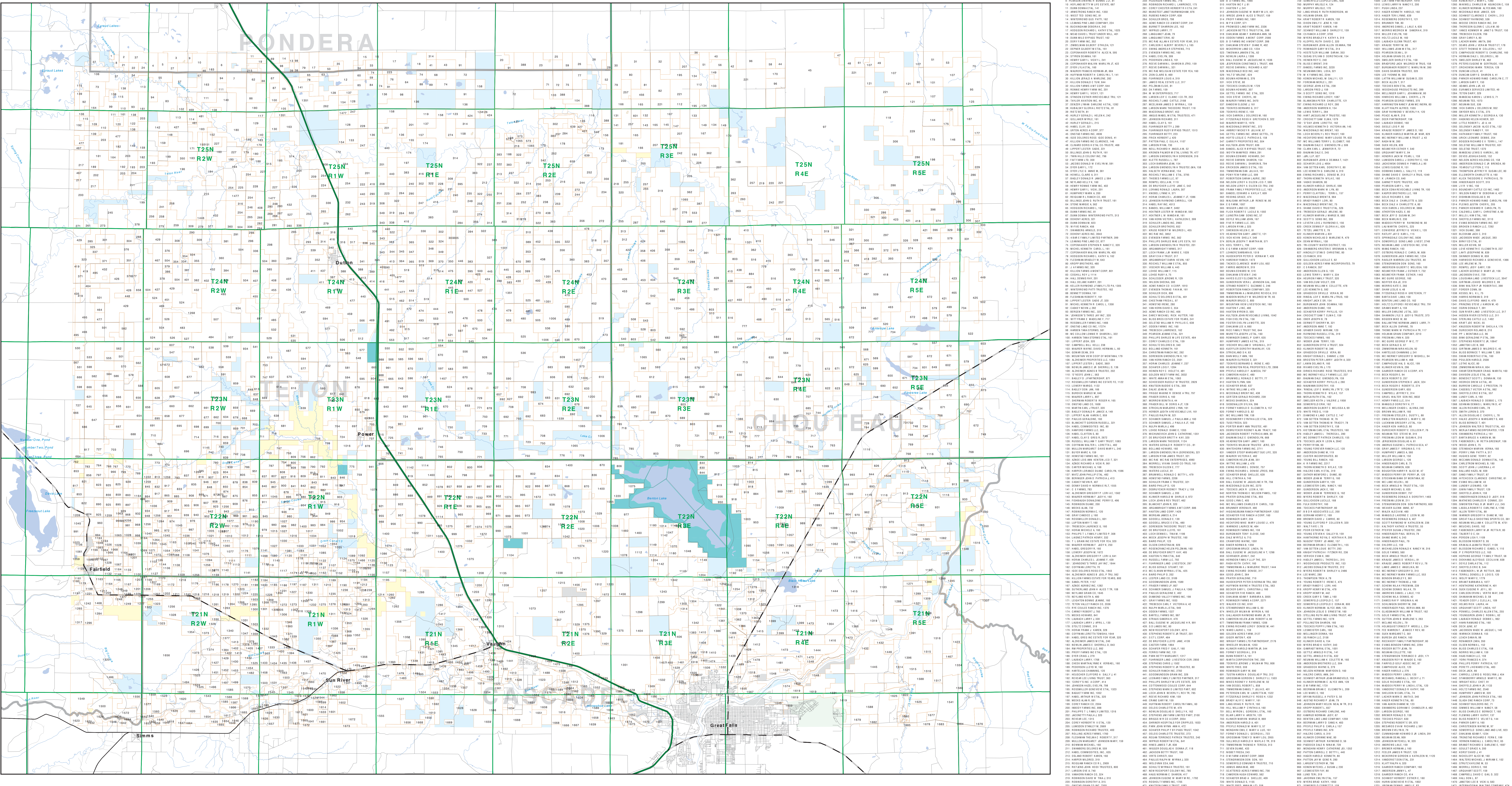


Private Land Ownership Identification

GREAT FALLS NORTH - (47111b)



Private (Yellow)
State Lands (Green)
Road (Red)
Primitive Road (Blue)
River (Blue)
Stream/Creek (Blue)
Intermittent Creek (Blue)
Township (Grey)
County Border (Grey)
Other Federal Land (Green)
National Park Service (Green)
Fish and Wildlife Service (Green)
Native American (Green)
Local Govt (Green)
MFWP - WMA (Green)
Lake/Reservoir (Blue)
Interstate (Red)
Secondary Highway (Red)
Highway (Red)
Wildlife Management Area (Green)

NOTES:
 Yellow parcels may appear on this map.
 Parcel data on this map is not intended to be used for legal purposes. The Montana Department of Fish, Wildlife & Parks is not responsible for any errors or omissions. The Montana Department of Fish, Wildlife & Parks is not responsible for any errors or omissions. The Montana Department of Fish, Wildlife & Parks is not responsible for any errors or omissions.

The private land data was developed for the Montana Cadastre Database Project. The data was developed by the Montana Department of Fish, Wildlife & Parks. The data was developed by the Montana Department of Fish, Wildlife & Parks. The data was developed by the Montana Department of Fish, Wildlife & Parks.

USGS 100,000 Scale Quadrangle Index			
1110	1120	1130	1140
47111	47112	47113	47114
47115	47116	47117	47118
47119	47120	47121	47122
47123	47124	47125	47126
47127	47128	47129	47130
47131	47132	47133	47134
47135	47136	47137	47138
47139	47140	47141	47142
47143	47144	47145	47146
47147	47148	47149	47150
47151	47152	47153	47154
47155	47156	47157	47158
47159	47160	47161	47162
47163	47164	47165	47166
47167	47168	47169	47170
47171	47172	47173	47174
47175	47176	47177	47178
47179	47180	47181	47182
47183	47184	47185	47186
47187	47188	47189	47190
47191	47192	47193	47194
47195	47196	47197	47198
47199	47200	47201	47202