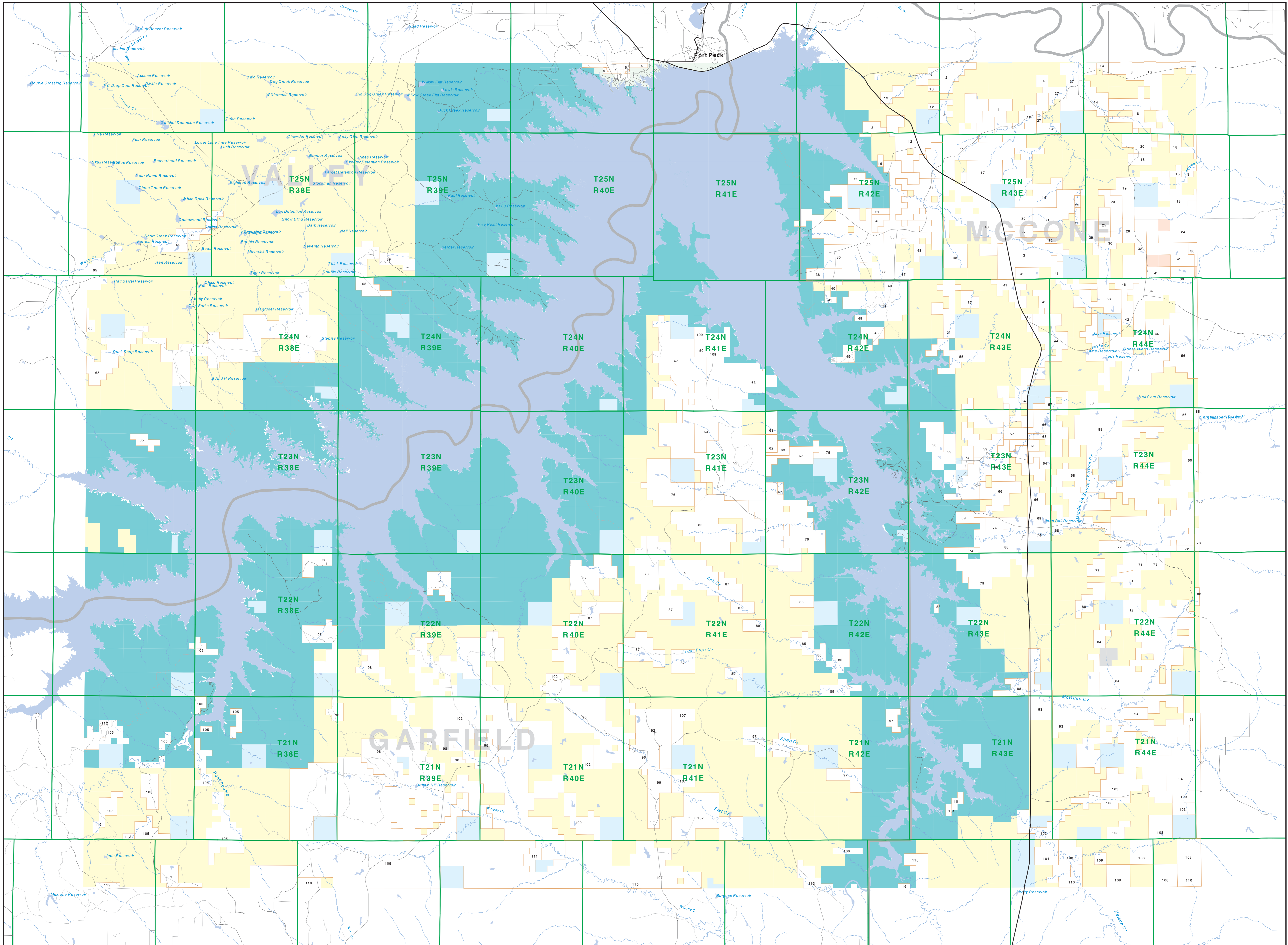


# Private Land Ownership Identification

## FORT PECK LAKE EAST - (47106b)



- 1: EBERHARTER JANE ET AL. 144
- 2: NICKEL JACK W TRUST 74
- 3: NICKEL ALBERT W TRUST 316
- 4: DEBOER JAMES H UNWEL 88
- 5: WITTELL JAMES H UNWEL 91
- 6: WITTELL JAMES H UNWEL 92
- 7: WATSON RONALD W TRUST 421
- 8: WITTELL JAMES H UNWEL 94
- 9: FERREY JAMES K UNWEL 109
- 10: NICKEL JACK W TRUST 629
- 11: MC CULLOCH CORINNE PIERRE DA 951
- 12: NICKEL LESTER E 1103
- 13: NICKEL RANCHO LLC 183
- 14: MC CULLOCH CORINNE PIERRE DA 3008
- 15: RATHER WILLIAM H UNWEL 200
- 16: GUTTENBERG DAVID S UNWEL 83
- 17: WALTON VAUGHN R PATY 1244
- 18: RATHER WILLIAM H UNWEL 2001
- 19: RATHER WILLIAM H UNWEL 2002
- 20: JONES CHARLES F TRUST 421
- 21: MILLER LORNA G 1513
- 22: NICKEL JAMES H UNWEL 1044
- 23: WALTON EDWARD CUSKER HULLA 80
- 24: RATHER WILLIAM H UNWEL 2000
- 25: RATHER WILLIAM H UNWEL 2003
- 26: SEC OF MT UNWEL 1500000 300
- 27: WALTON VAUGHN R PATY 12000 3820
- 28: RATHER WILLIAM H UNWEL 2004
- 29: ERICSSON DAVID H UNWEL 2005
- 30: RATHER WILLIAM H UNWEL 2006
- 31: BLEVINS LARRY F 4501
- 32: WALTON VAUGHN R 4501
- 33: SILVER DOLLAR GRADING ASSOCAT 477
- 34: MC CULLOCH CORINNE PIERRE DA 1500
- 35: KIRKLAND JAMES E ROBERT S 3388
- 36: Y CORP INC 315
- 37: POWERS TERRANCE R 315
- 38: FREDERICK WITTELL UNWEL 1118
- 39: EDE HADDO L 316
- 40: HODGES JAMES R 303
- 41: REED RANDY L CAROLYN R 3250
- 42: GILBERT PARK UNWEL 1000
- 43: SCHWAB JAMES H 1100
- 44: ROUSHER DENNIS M 120
- 45: MC CINE CITY LLC 160
- 46: POWERS JAMES J DONNA J 322
- 47: ERICSSON DAVID H 2401
- 48: ROUSHER DENNIS M 668
- 49: LAND AND WATER UNWEL 500
- 50: CONSERVATION FUND INC 104
- 51: SEYMOUR ALVA H UNWEL 1142
- 52: MONTANA RANCHES A PARTNERSHIP 8114
- 53: SEYMOUR ALVA H UNWEL 1143
- 54: SEYMOUR ALVA H UNWEL 1144
- 55: HAYES MARGARET M 2078
- 56: NELSON MRS L E 1278
- 57: NELSON MRS L E 1279
- 58: TAYLOR CHADE E HEIDI K 402
- 59: KEYSER WILLIAM E UNWEL 302
- 60: BALDWIN DONALD J 227
- 61: EDWARDS LINDA J TRUSTEE OF 4037
- 62: BRIDGEMAN WILLIAM W UNWEL 316
- 63: BRIDGEMAN WILLIAM W UNWEL 317
- 64: NELSON TRUST L E ET AL 2918
- 65: LONDON AND WILSON ASSOCIATION 1148
- 66: NELSON TRUST L E ET AL 4098
- 67: NELSON TRUST L E ET AL 4099
- 68: NELSON TRUST L E ET AL 4100
- 69: ANSTON LARRY JOSE E JAMES 122
- 70: ROUSHER DENNIS M UNWEL 140
- 71: ANSTON LARRY JOSE E JAMES 122
- 72: JONSON MARY M 325
- 73: DASHNER DARLENE TRUST 1088
- 74: DASHNER DARLENE TRUST 1089
- 75: SCHWAB JAMES H UNWEL 1000
- 76: SPER JIM C 4230
- 77: SCHWAB JAMES H UNWEL 1000
- 78: THOMAS DELVA R EVELYN R 2105
- 79: NELSON TRUST L E ET AL 1122
- 80: ANSTON LARRY JOSE E JAMES 92
- 81: SANDSTROM CARLE O INC 1122
- 82: COLE LEAH R 482
- 83: LONDON AND WILSON ASSOCIATION 1148
- 84: W & B R SHEEP CATTLE CO INC 3437
- 85: WOODS FARM UNWEL 1000
- 86: US FISH WILDLIFE SERVICES 878
- 87: MORTON FARM UNWEL 1000 4040
- 88: TOWSE FARMS INC 1800
- 89: TAYLOR CLAY WALTER 1125
- 90: MCDONALD DONALD A 3030
- 91: CONTO MORTON R UNWEL 400
- 92: MCDONALD DONALD A 1000
- 93: WITTELL JAMES H UNWEL 91
- 94: LONDON AND WILSON ASSOCIATION 1148
- 95: ST BENE ALBERT E TRUSTEE 315
- 96: BARCLAY A W TRUSTEE OF THE 1004
- 97: WITTELL JAMES H UNWEL 91
- 98: MORTON VIRGINIA L 1012
- 99: JONES CHARLES F 1118
- 100: LONDON AND WILSON ASSOCIATION 1148
- 101: TWOHILL EDGEMAN A W UNWEL 149
- 102: COOPERSON DONALD 1811
- 103: ANSTON LARRY JOSE E JAMES 900
- 104: WITTELL JAMES H UNWEL 900
- 105: HILLBRAND JOHN 3100
- 106: WITTELL JAMES H UNWEL 900
- 107: RUSSELL RANCHO 3403
- 108: BISHOP LEE L LEE L 3178
- 109: US BUREAU OF LAND MANAGEMENT 1000
- 110: BRIDGEMAN WILLIAM W UNWEL 316
- 111: BRIDGEMAN WILLIAM W UNWEL 317
- 112: MCKELVER JOHN W THOMAS G 400 500
- 113: GOSLINE MARION W TRUSTEE OF 314
- 114: MC KELLICK JOHN W DELA B 800
- 115: GOSLINE MARION W TRUSTEE OF 314
- 116: MASON THELMA ET AL 277
- 117: BRIDGEMAN WILLIAM W UNWEL 316

**Legend**

- Private
- Forest Service
- Bureau of Land Management
- National Park Service
- Other Federal Land
- Fish and Wildlife Service
- State Lands
- Local Govt
- Native American
- MFWP - WMA
- Lake/Reservoir
- Road
- Primitive Road
- River
- Stream/Creek
- Intermittent Creek
- Township
- County Border
- Fish Wildlife & Parks Wildlife Management Area
- Highway

**NOTES:**  
 Not all legend items may appear on this map.  
 Features shown on this map do not imply public access to any lands.  
 The land base data displayed on this map may not be complete and may contain errors in boundary locations and/or coding.  
**DISCLAIMERS:**  
 The MT Natural Heritage Program, MT State Library, MT Dept. of Administration and MT Dept. of Revenue make no representations or warranties whatsoever with respect to the accuracy or completeness of the data contained in these maps and assumes no responsibility for the suitability of these data for a particular purpose. These agencies will not be liable for any damages incurred as a result of errors displayed here. The ownership boundaries displayed on this map are not based on land survey data and are not a substitute for property surveys. This map displays public and private land ownership information derived from several sources and continues to be corrected and updated.

**SOURCES / ACKNOWLEDGEMENTS**  
 This map was produced as a joint effort between the MT Dept. of Fish, Wildlife, and Parks (FWP) and the Montana Natural Resource Information System (NRIS) of the MT State Library, in response to Montana Code Annotated 87-3-308, which directs the FWP "... with cooperation with all state and federal land management agencies, to develop accurate land ownership maps... in the State".  
 The public land data is from the MT Natural Heritage Program land stewardship data collection. Much of this data was originally digitized by the Bureau of Land Management (BLM) from 1:50,000 scale BLM Surface Management Status maps. Additional information, corrections and updates (especially for riparian lands and private lands) were added by the University of Montana, Wildlife Spatial Analysis Unit, during 1998-1998. Since 1998, the Montana Natural Heritage Program has made numerous updates and corrections (especially for state trust lands, Montana Fish, Wildlife & Parks areas, US Fish & Wildlife Service areas, and conservation easements). These data are based on data supplied by the various public agencies and land trusts, and have not been verified against county or Montana Department of Revenue records.

The private land data were developed for the Montana Cultural Database Project. These data are provided through a cooperative effort between the Montana Department of Administration (ODA), the Montana Department of Revenue (DOR), other state agencies, local governments, USDO BLM and private enterprises. Lands depicted on this map represent single ownership or contiguous parcels that are at least 40 acres in size. The ODA maintains the GIS database layer and the DOR maintains the private ownership information.  
 The base scale for the public ownership data is 1:100,000, though many of the recent edits incorporate data digitized from 1:24,000 scale maps or survey data. Private ownership data is accurate to scales of 1:24,000 or smaller.  
 Map produced September 2008 with ownership data current as of August 2008.

**USGS 100,000 Scale Quadrangle Index**

81100	81120	81140	81160	81180	81200	81220	81240	81260	81280	81300	81320	81340	81360	81380	81400
110	1120	1140	1160	1180	1200	1220	1240	1260	1280	1300	1320	1340	1360	1380	1400
47110	47130	47150	47170	47190	47210	47230	47250	47270	47290	47310	47330	47350	47370	47390	47410
48110	48130	48150	48170	48190	48210	48230	48250	48270	48290	48310	48330	48350	48370	48390	48410
49110	49130	49150	49170	49190	49210	49230	49250	49270	49290	49310	49330	49350	49370	49390	49410
50110	50130	50150	50170	50190	50210	50230	50250	50270	50290	50310	50330	50350	50370	50390	50410
51110	51130	51150	51170	51190	51210	51230	51250	51270	51290	51310	51330	51350	51370	51390	51410
52110	52130	52150	52170	52190	52210	52230	52250	52270	52290	52310	52330	52350	52370	52390	52410
53110	53130	53150	53170	53190	53210	53230	53250	53270	53290	53310	53330	53350	53370	53390	53410
54110	54130	54150	54170	54190	54210	54230	54250	54270	54290	54310	54330	54350	54370	54390	54410
55110	55130	55150	55170	55190	55210	55230	55250	55270	55290	55310	55330	55350	55370	55390	55410
56110	56130	56150	56170	56190	56210	56230	56250	56270	56290	56310	56330	56350	56370	56390	56410