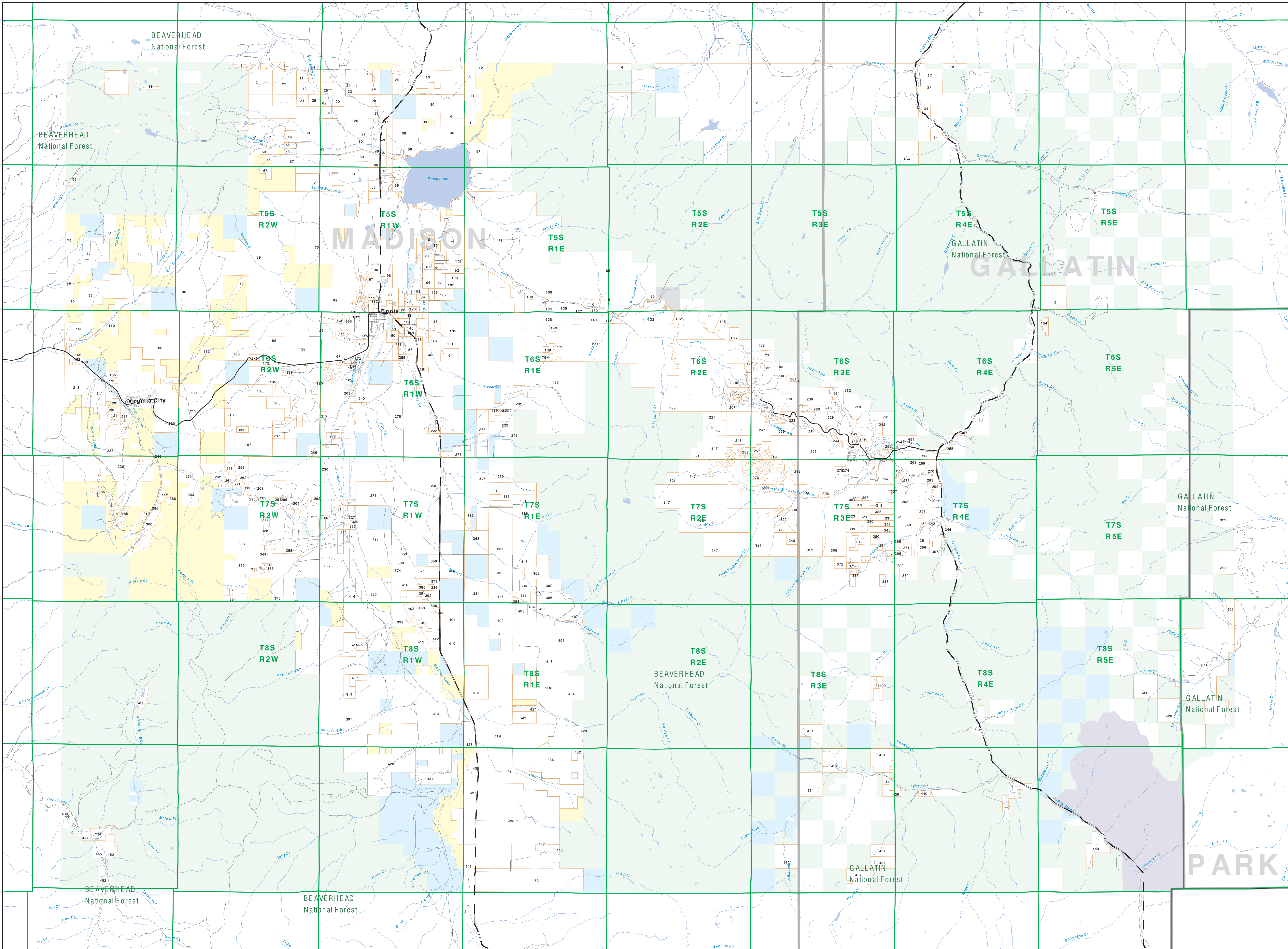


Private Land Ownership Identification

ENNIS - (45111a)

Parcel Num. Owner Name, Total Acres



Parcel Num. Owner Name, Total Acres

217	BIG SKY COUNTRY WATER	2.67
218	PAUL H & MARTHA TRUST	3.0
219	CHRISTOPHER W & KAREN	3.0
220	VAW 2003 REVOC TRUST	4.1
221	84 MILLER TRACT	5.0
222	TRIM RONALD J & DELANE	4.1
223	PLACENTIA LINA RANCH	39.1
224	TORACCI POOL LIVESTOCK ASSOC	62.7
225	PACIFIC LINA RANCH	39.1
226	SCOTT CAMP	1.7
227	CHERRY HILLS	1.0
228	CHERRY HILLS	1.0
229	CHERRY HILLS	1.0
230	CHERRY HILLS	1.0
231	CHERRY HILLS	1.0
232	CHERRY HILLS	1.0
233	CHERRY HILLS	1.0
234	CHERRY HILLS	1.0
235	CHERRY HILLS	1.0
236	CHERRY HILLS	1.0
237	CHERRY HILLS	1.0
238	CHERRY HILLS	1.0
239	CHERRY HILLS	1.0
240	CHERRY HILLS	1.0
241	CHERRY HILLS	1.0
242	CHERRY HILLS	1.0
243	CHERRY HILLS	1.0
244	CHERRY HILLS	1.0
245	CHERRY HILLS	1.0
246	CHERRY HILLS	1.0
247	CHERRY HILLS	1.0
248	CHERRY HILLS	1.0
249	CHERRY HILLS	1.0
250	CHERRY HILLS	1.0
251	CHERRY HILLS	1.0
252	CHERRY HILLS	1.0
253	CHERRY HILLS	1.0
254	CHERRY HILLS	1.0
255	CHERRY HILLS	1.0
256	CHERRY HILLS	1.0
257	CHERRY HILLS	1.0
258	CHERRY HILLS	1.0
259	CHERRY HILLS	1.0
260	CHERRY HILLS	1.0
261	CHERRY HILLS	1.0
262	CHERRY HILLS	1.0
263	CHERRY HILLS	1.0
264	CHERRY HILLS	1.0
265	CHERRY HILLS	1.0
266	CHERRY HILLS	1.0
267	CHERRY HILLS	1.0
268	CHERRY HILLS	1.0
269	CHERRY HILLS	1.0
270	CHERRY HILLS	1.0
271	CHERRY HILLS	1.0
272	CHERRY HILLS	1.0
273	CHERRY HILLS	1.0
274	CHERRY HILLS	1.0
275	CHERRY HILLS	1.0
276	CHERRY HILLS	1.0
277	CHERRY HILLS	1.0
278	CHERRY HILLS	1.0
279	CHERRY HILLS	1.0
280	CHERRY HILLS	1.0
281	CHERRY HILLS	1.0
282	CHERRY HILLS	1.0
283	CHERRY HILLS	1.0
284	CHERRY HILLS	1.0
285	CHERRY HILLS	1.0
286	CHERRY HILLS	1.0
287	CHERRY HILLS	1.0
288	CHERRY HILLS	1.0
289	CHERRY HILLS	1.0
290	CHERRY HILLS	1.0
291	CHERRY HILLS	1.0
292	CHERRY HILLS	1.0
293	CHERRY HILLS	1.0
294	CHERRY HILLS	1.0
295	CHERRY HILLS	1.0
296	CHERRY HILLS	1.0
297	CHERRY HILLS	1.0
298	CHERRY HILLS	1.0
299	CHERRY HILLS	1.0
300	CHERRY HILLS	1.0
301	CHERRY HILLS	1.0
302	CHERRY HILLS	1.0
303	CHERRY HILLS	1.0
304	CHERRY HILLS	1.0
305	CHERRY HILLS	1.0
306	CHERRY HILLS	1.0
307	CHERRY HILLS	1.0
308	CHERRY HILLS	1.0
309	CHERRY HILLS	1.0
310	CHERRY HILLS	1.0
311	CHERRY HILLS	1.0
312	CHERRY HILLS	1.0
313	CHERRY HILLS	1.0
314	CHERRY HILLS	1.0
315	CHERRY HILLS	1.0
316	CHERRY HILLS	1.0
317	CHERRY HILLS	1.0
318	CHERRY HILLS	1.0
319	CHERRY HILLS	1.0
320	CHERRY HILLS	1.0
321	CHERRY HILLS	1.0
322	CHERRY HILLS	1.0
323	CHERRY HILLS	1.0
324	CHERRY HILLS	1.0
325	CHERRY HILLS	1.0
326	CHERRY HILLS	1.0
327	CHERRY HILLS	1.0
328	CHERRY HILLS	1.0
329	CHERRY HILLS	1.0
330	CHERRY HILLS	1.0
331	CHERRY HILLS	1.0
332	CHERRY HILLS	1.0
333	CHERRY HILLS	1.0
334	CHERRY HILLS	1.0
335	CHERRY HILLS	1.0
336	CHERRY HILLS	1.0
337	CHERRY HILLS	1.0
338	CHERRY HILLS	1.0
339	CHERRY HILLS	1.0
340	CHERRY HILLS	1.0
341	CHERRY HILLS	1.0
342	CHERRY HILLS	1.0
343	CHERRY HILLS	1.0
344	CHERRY HILLS	1.0
345	CHERRY HILLS	1.0
346	CHERRY HILLS	1.0
347	CHERRY HILLS	1.0
348	CHERRY HILLS	1.0
349	CHERRY HILLS	1.0
350	CHERRY HILLS	1.0
351	CHERRY HILLS	1.0
352	CHERRY HILLS	1.0
353	CHERRY HILLS	1.0
354	CHERRY HILLS	1.0
355	CHERRY HILLS	1.0
356	CHERRY HILLS	1.0
357	CHERRY HILLS	1.0
358	CHERRY HILLS	1.0
359	CHERRY HILLS	1.0
360	CHERRY HILLS	1.0
361	CHERRY HILLS	1.0
362	CHERRY HILLS	1.0
363	CHERRY HILLS	1.0
364	CHERRY HILLS	1.0
365	CHERRY HILLS	1.0
366	CHERRY HILLS	1.0
367	CHERRY HILLS	1.0
368	CHERRY HILLS	1.0
369	CHERRY HILLS	1.0
370	CHERRY HILLS	1.0
371	CHERRY HILLS	1.0
372	CHERRY HILLS	1.0
373	CHERRY HILLS	1.0
374	CHERRY HILLS	1.0
375	CHERRY HILLS	1.0
376	CHERRY HILLS	1.0
377	CHERRY HILLS	1.0
378	CHERRY HILLS	1.0
379	CHERRY HILLS	1.0
380	CHERRY HILLS	1.0
381	CHERRY HILLS	1.0
382	CHERRY HILLS	1.0
383	CHERRY HILLS	1.0
384	CHERRY HILLS	1.0
385	CHERRY HILLS	1.0
386	CHERRY HILLS	1.0
387	CHERRY HILLS	1.0
388	CHERRY HILLS	1.0
389	CHERRY HILLS	1.0
390	CHERRY HILLS	1.0
391	CHERRY HILLS	1.0
392	CHERRY HILLS	1.0
393	CHERRY HILLS	1.0
394	CHERRY HILLS	1.0
395	CHERRY HILLS	1.0
396	CHERRY HILLS	1.0
397	CHERRY HILLS	1.0
398	CHERRY HILLS	1.0
399	CHERRY HILLS	1.0
400	CHERRY HILLS	1.0
401	CHERRY HILLS	1.0
402	CHERRY HILLS	1.0
403	CHERRY HILLS	1.0
404	CHERRY HILLS	1.0
405	CHERRY HILLS	1.0
406	CHERRY HILLS	1.0
407	CHERRY HILLS	1.0
408	CHERRY HILLS	1.0
409	CHERRY HILLS	1.0
410	CHERRY HILLS	1.0
411	CHERRY HILLS	1.0
412	CHERRY HILLS	1.0
413	CHERRY HILLS	1.0
414	CHERRY HILLS	1.0
415	CHERRY HILLS	1.0
416	CHERRY HILLS	1.0
417	CHERRY HILLS	1.0
418	CHERRY HILLS	1.0
419	CHERRY HILLS	1.0
420	CHERRY HILLS	1.0
421	CHERRY HILLS	1.0
422	CHERRY HILLS	1.0
423	CHERRY HILLS	1.0
424	CHERRY HILLS	1.0
425	CHERRY HILLS	1.0
426	CHERRY HILLS	1.0
427	CHERRY HILLS	1.0
428	CHERRY HILLS	1.0
429	CHERRY HILLS	1.0
430	CHERRY HILLS	1.0
431	CHERRY HILLS	1.0
432	CHERRY HILLS	1.0
433	CHERRY HILLS	1.0
434	CHERRY HILLS	1.0
435	CHERRY HILLS	1.0
436	CHERRY HILLS	1.0
437	CHERRY HILLS	1.0
438	CHERRY HILLS	1.0
439	CHERRY HILLS	1.0
440	CHERRY HILLS	1.0
441	CHERRY HILLS	1.0
442	CHERRY HILLS	1.0
443	CHERRY HILLS	1.0
444	CHERRY HILLS	1.0
445	CHERRY HILLS	1.0
446	CHERRY HILLS	1.0
447	CHERRY HILLS	1.0
448	CHERRY HILLS	1.0
449	CHERRY HILLS	1.0
450	CHERRY HILLS	1.0
451	CHERRY HILLS	1.0
452	CHERRY HILLS	1.0
453	CHERRY HILLS	1.0
454	CHERRY HILLS	1.0
455	CHERRY HILLS	1.0
456	CHERRY HILLS	1.0
457	CHERRY HILLS	1.0
458	CHERRY HILLS	1.0
459	CHERRY HILLS	1.0
460	CHERRY HILLS	1.0
461	CHERRY HILLS	1.0
462	CHERRY HILLS	1.0
463	CHERRY HILLS	1.0
464	CHERRY HILLS	1.0
465	CHERRY HILLS	1.0
466	CHERRY HILLS	1.0
467	CHERRY HILLS	1.0
468	CHERRY HILLS	1.0
469	CHERRY HILLS	1.0
470	CHERRY HILLS	1.0
471	CHERRY HILLS	1.0
472	CHERRY HILLS	1.0
473	CHERRY HILLS	1.0
474	CHERRY HILLS	1.0
475	CHERRY HILLS	1.0
476	CHERRY HILLS	1.0
477	CHERRY HILLS	1.0
478	CHERRY HILLS	1.0
479	CHERRY HILLS	1.0
480	CHERRY HILLS	1.0
481	CHERRY HILLS	1.0
482	CHERRY HILLS	1.0
483	CHERRY HILLS	1.0
484	CHERRY HILLS	1.0
485	CHERRY HILLS	1.0
486	CHERRY HILLS	1.0
487	CHERRY HILLS	1.0
488	CHERRY HILLS	1.0
489	CHERRY HILLS	1.0
490	CHERRY HILLS	1.0
491	CHERRY HILLS	1.0
492	CHERRY HILLS	1.0
493	CHERRY HILLS	1.0
494	CHERRY HILLS	1.0
495	CHERRY HILLS	1.0
496	CHERRY HILLS	1.0
497	CHERRY HILLS	1.0
498	CHERRY HILLS	1.0
499	CHERRY HILLS	1.0
500	CHERRY HILLS	1.0

Legend for land ownership and features:

- Private (Yellow)
- State Lands (Light Blue)
- Forest Service (Green)
- Bureau of Land Management (Light Green)
- National Park Service (Purple)
- Other Federal Land (Orange)
- Fish and Wildlife Service (Dark Blue)
- Road (Grey)
- Primitive Road (Light Grey)
- River (Blue)
- Stream/Creek (Light Blue)
- Intermittent Creek (Dashed Blue)
- Township (Black)
- County Border (Black)
- Fish Wildlife & Parks Wildlife Management Area (Green)
- Native American (Red)
- MFWP - WMA (Red)
- Lake/Reservoir (Blue)
- Interstate Highway (Thick Black)
- Secondary Highway (Thin Black)
- Highway (Thin Black)

NOTES:
Not all legend items that appear on this map.
Private land data displayed on this map may not be complete and may contain errors in boundary locations and/or colors.
DISCLAIMERS:
The MT Natural Heritage Program, MT State Library, MT Dept of Administration, and MT Dept of Revenue make no representations or warranties whatsoever with respect to the accuracy or completeness of the data contained in these maps and assume no responsibility for the suitability of these data for a particular purpose. These legends are not to be used for any purpose not intended by the provider. The ownership boundaries displayed on this map are not based on land survey data and are not suitable for property surveys. This map displays public and private land ownership information derived from several sources and continues to be corrected and updated.

SOURCES/ACKNOWLEDGEMENTS
This map was produced as a joint effort between the MT Dept of Fish, Wildlife, and Parks (DFWP) and the Montana Natural Resource Information System (MNRIS) of the MT State Library, in cooperation with the Montana Department of Revenue (DOR), the Montana Department of Administration (MDA), and the Montana Department of Natural Resources (MDNR).
The public land data is from the MT Natural Heritage Program land ownership data collection. Much of this data was originally digitized by the Bureau of Land Management (BLM) from a 1:50,000 scale BLM Surface Management Status maps. Additional data, corrections and updates were provided by the BLM and private landowners who were added by the University of Montana, Wildlife Spatial Analysis Unit, during 1998-1999. Since 1998, the Montana Natural Heritage Program has had numerous updates and corrections (especially for state trust lands, Montana Fish, Wildlife & Parks areas, US Fish & Wildlife Service areas, and conservation easements). These data are based on data supplied by the various public agencies and individuals, and have not been verified against county or Montana Department of Revenue records.

The private land data were developed for the Montana Cadastral Database Project. These data are provided through a cooperative effort between the Montana Department of Revenue (DOR), the Montana Department of Natural Resources (MDNR), local agencies, local governments, USGS BLM, and private landowners. Land parcels are shown on the map representing single ownership of contiguous parcels that are at least 40 acres in size. The DOR maintains the GIS cadastral layer and the DOR maintains the private ownership information.
The base scale for the public ownership data is 1:50,000, though many of the private ownership data is digitized from a 1:24,000 scale map of survey data.
Map produced September 2008 with ownership data current as of August 2008.

USGS 100,000 Scale Quadrangle Index

45110	45111	45112	45113	45114	45115	45116	45117	45118	45119	45120
45120	45121	45122	45123	45124	45125	45126	45127	45128	45129	45130
45130	45131	45132	45133	45134	45135	45136	45137	45138	45139	45140
45140	45141	45142	45143	45144	45145	45146	45147	45148	45149	45150
45150	45151	45152	45153	45154	45155	45156	45157	45158	45159	45160
45160	45161	45162	45163	45164	45165	45166	45167	45168	45169	45170
45170	45171	45172	45173	45174	45175	45176	45177	45178	45179	45180
45180	45181	45182	45183	45184	45185	45186	45187	45188	45189	45190
45190	45191	45192	45193	45194	45195	45196	45197	45198	45199	45200