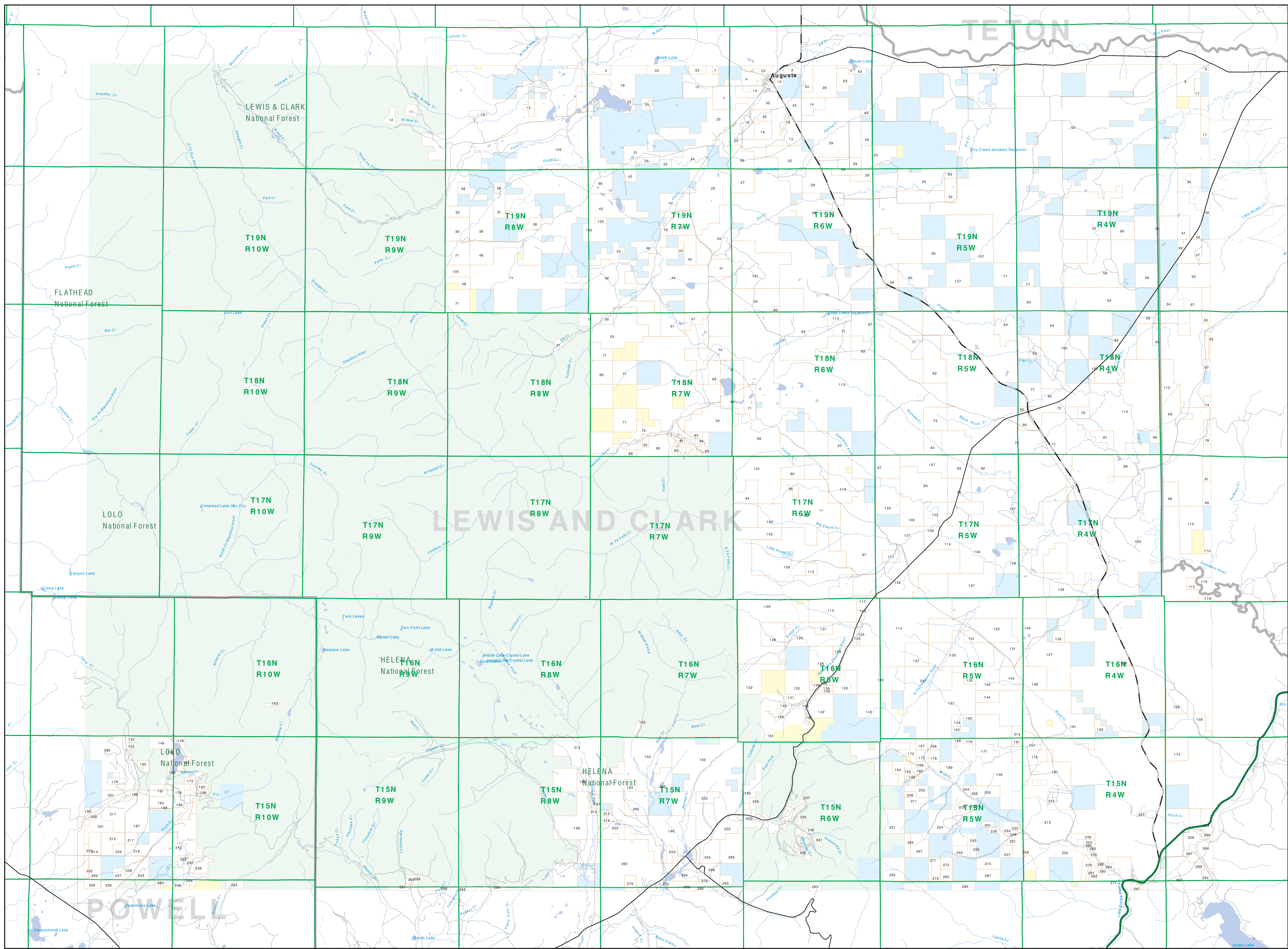


Private Land Ownership Identification

DEARBORN RIVER - (47112a)



Legend

- Private
- State Lands
- Forest Service
- Bureau of Land Management
- National Park Service
- Fish and Wildlife Service
- Local Govt
- Native American
- MFWP - WMA
- Lake/Reservoir
- Interstate
- Secondary Highway
- Highway
- Road
- Primitive Road
- River
- Stream/Creek
- Intermittent Creek
- Township
- County Border
- Fish Wildlife & Parks
- Wildlife Management Area

NOTES:
Not all legends items may appear on this map.
Features shown on this map do not imply public access to any lands.
The land status data displayed on this map may not be complete and may contain errors in boundary location and/or coding.
DISCLAIMERS:
The Montana Heritage Program, MT State Library, MT Dept. of Administration and MT Dept. of Revenue make no representations or warranties whatsoever with respect to the accuracy or completeness of the data contained in these maps and assumes no responsibility for the suitability of these data for a particular purpose. These agencies will not be liable for any damages incurred as a result of errors displayed here.
The ownership boundaries displayed on this map are based on land survey data and are not a substitute for property surveys.
This map displays public and private land ownership information derived from several sources and continues to be corrected and updated.

SOURCES / ACKNOWLEDGEMENTS
This map was produced as a joint effort between the MT Dept. of Fish, Wildlife, and Parks (FWP) and the Montana Natural Resource Information System (NRIS) of the MT State Library, in response to Montana Code Annotated § 2-3-309, which directs the FWP to "...work cooperatively with all state and federal land management agencies... to develop accurate land ownership maps... in the State."
The public land data from the MT Natural Heritage Program land stewardship data collection. Much of this data was originally digitized by the Bureau of Land Management (BLM) from a 1:100,000 scale BLM Surface Management Status maps. Additional information, corrections and updates to this land data and private lands were added by the University of Montana, with Spatial Analysis Units, during 1998-1999. Since 1999, the Montana Natural Heritage Program has made numerous updates and corrections especially for state trust lands, Montana Fish, Wildlife & Parks areas, US Fish & Wildlife Service areas, and conservation easements. These data are based on data supplied by the various public agencies and land trusts, and have not been verified against county or Montana Department of Revenue records.

The private land data were developed for the Montana Cadastral Database Project. These data are provided through a cooperative effort between the Montana Department of Administration (DOA), the Montana Department of Revenue (DOR), other state agencies, local governments, USDI BLM and private enterprise. Lands depicted on this map represent single ownership of contiguous parcels that are at least 40 acres in size. The DOA maintains the GIS cadastral layer and the DOR maintains the general ownership information.
The base scale for the public ownership data is 1:100,000, though many of the recent updates incorporate data digitized from 1:24,000 scale maps or survey data. Private ownership data are accurate to scales of 1:20,000 or smaller.
Map produced September 2008 with ownership data current as of August 2008.

USGS 100,000 Scale Quadrangle Index

8110	48110	48111	48112	48113	48114	48115	48116	48117	48118	48119	48120	48121	48122
110	48110	48111	48112	48113	48114	48115	48116	48117	48118	48119	48120	48121	48122
100	47110	47111	47112	47113	47114	47115	47116	47117	47118	47119	47120	47121	47122
47110	47111	47112	47113	47114	47115	47116	47117	47118	47119	47120	47121	47122	47123
46110	46111	46112	46113	46114	46115	46116	46117	46118	46119	46120	46121	46122	46123
45110	45111	45112	45113	45114	45115	45116	45117	45118	45119	45120	45121	45122	45123
44110	44111	44112	44113	44114	44115	44116	44117	44118	44119	44120	44121	44122	44123