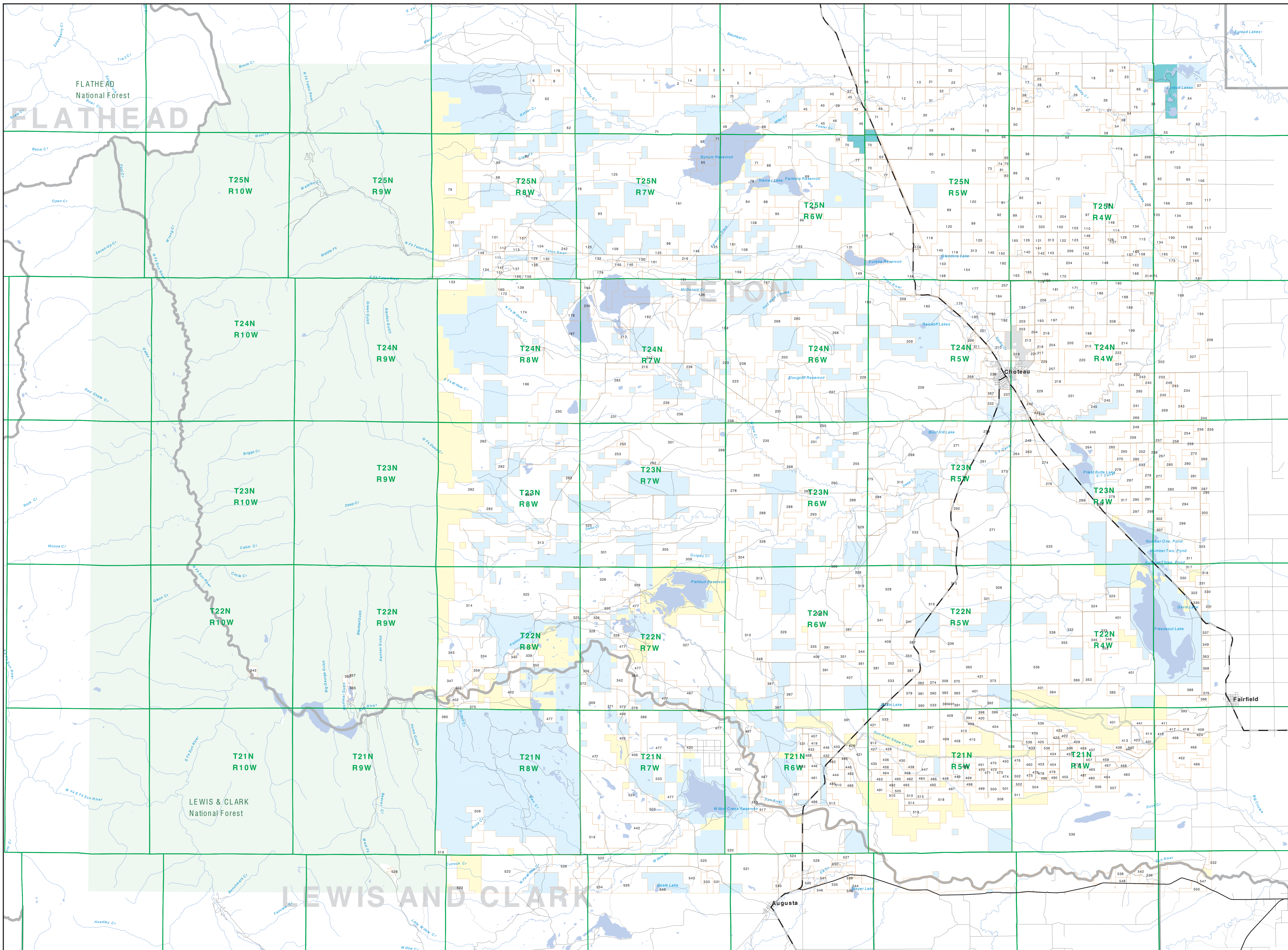


Private Land Ownership Identification

CHOTEAU - (47112b)



- Private
- Forest Service
- Bureau of Land Management
- National Park Service
- Other Federal Land
- Fish and Wildlife Service
- State Lands
- Local Govt
- Native American
- Interstate
- Secondary Highway
- Road
- Primitive Road
- River
- Stream/Creek
- Intermittent Creek
- Township
- County Border
- Fish Wildlife & Parks
- Wildlife Management Area
- MFWP - WMA
- Lake/Reservoir

NOTES:
Not all legend items may appear on this map.
Features shown on this map do not imply public access to any lands.
The best available data displayed on this map may not be complete and may contain errors in boundary locations and/or color coding.
DISCLAIMERS:
The MT Natural Heritage Program, MT State Library, MT Dept of Administration and MT Dept of Revenue make no representations or warranties whatsoever with respect to the accuracy or completeness of the data contained in these maps and assume no responsibility for the suitability of these data for a particular purpose. These agencies will not be liable for any damages incurred as a result of their products. The copyright boundaries displayed on this map are not based on land survey data and are not a substitute for proper surveys.
This map displays public and private land ownership information derived from several sources and continues to be corrected and updated.

SOURCES & ACKNOWLEDGEMENTS
This map was produced as a joint effort between the MT Dept. of Fish, Wildlife and Parks (FWP) and the Montana Natural Resource Information System (NRIS) of the MT State Library. The Montana Department of Administration (DOA), the Montana Department of Revenue (DORE), other state agencies, local governments, USFS BLM and private enterprise. Land parcels on this map represent single ownership parcels that are at least 40 acres in size. The DOA maintains the GIS cadastral layer and the DOA maintains the private ownership information.
The public land data from the MT Natural Heritage Program land ownership data collection. Maps and data were originally prepared by the Bureau of Land Management (BLM) from 1:100,000 scale BLM Surface Management Status maps. The best available data displayed on this map may not be complete and may contain errors in boundary locations and/or color coding.
Private land parcels were added by the University of Montana, Wildlife Spatial Information Systems (WSIS) and the Montana Department of Fish, Wildlife and Parks (FWP) from 1:250,000 scale BLM Surface Management Status maps. The best available data displayed on this map may not be complete and may contain errors in boundary locations and/or color coding.
Private land parcels were added by the University of Montana, Wildlife Spatial Information Systems (WSIS) and the Montana Department of Fish, Wildlife and Parks (FWP) from 1:250,000 scale BLM Surface Management Status maps. The best available data displayed on this map may not be complete and may contain errors in boundary locations and/or color coding.
Private land parcels were added by the University of Montana, Wildlife Spatial Information Systems (WSIS) and the Montana Department of Fish, Wildlife and Parks (FWP) from 1:250,000 scale BLM Surface Management Status maps. The best available data displayed on this map may not be complete and may contain errors in boundary locations and/or color coding.

The private land data were developed for the Montana Cadastral Database Project. These data are provided through a cooperative effort between the Montana Department of Administration (DOA), the Montana Department of Revenue (DORE), other state agencies, local governments, USFS BLM and private enterprise. Land parcels on this map represent single ownership parcels that are at least 40 acres in size. The DOA maintains the GIS cadastral layer and the DOA maintains the private ownership information.
The base scale for the public ownership data is 1:100,000. Through many of the recent years, the public ownership data has been digitized from 1:250,000 scale maps. Private ownership data is accurate to scales of 1:2500 or smaller.
Map produced September 2008 with ownership data current as of August 2008.

USGS 100,000 Scale Quadrangle Index

4710A	4710B	4710C	4710D	4710E	4710F	4710G	4710H	4710I	4710J
4711A	4711B	4711C	4711D	4711E	4711F	4711G	4711H	4711I	4711J
4712A	4712B	4712C	4712D	4712E	4712F	4712G	4712H	4712I	4712J
4713A	4713B	4713C	4713D	4713E	4713F	4713G	4713H	4713I	4713J
4714A	4714B	4714C	4714D	4714E	4714F	4714G	4714H	4714I	4714J
4715A	4715B	4715C	4715D	4715E	4715F	4715G	4715H	4715I	4715J
4716A	4716B	4716C	4716D	4716E	4716F	4716G	4716H	4716I	4716J
4717A	4717B	4717C	4717D	4717E	4717F	4717G	4717H	4717I	4717J
4718A	4718B	4718C	4718D	4718E	4718F	4718G	4718H	4718I	4718J
4719A	4719B	4719C	4719D	4719E	4719F	4719G	4719H	4719I	4719J
4720A	4720B	4720C	4720D	4720E	4720F	4720G	4720H	4720I	4720J