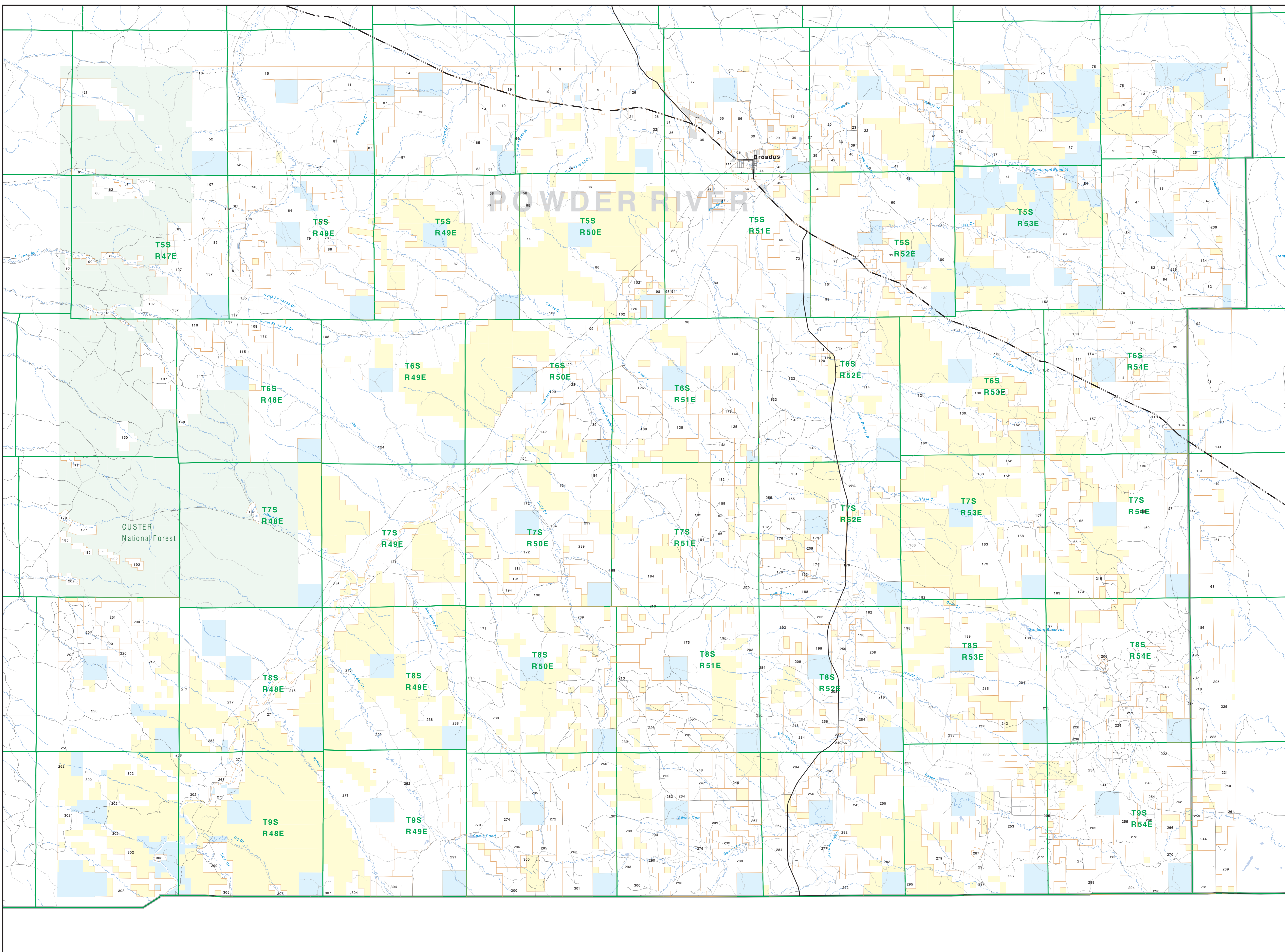


Private Land Ownership Identification BROADUS - (45105a)



1	PIZZAGROSSI THOMAS PATRICIA	207
2	PATTON WILSON PATRICK RICHARD	81
3	PATTON WILSON PATRICK RICHARD	81
4	EDWARDS INC	41
5	EDWARDS FRANCIS ALLEN MARLA LOIS	3158
6	CONWAY CAROL ANN	1000
7	MANNING RICHARD ART CORP	275
8	ULLICH RICHARD L	118
9	SMITH JOHN B CAROL	378
10	BARRETT THOMAS FORE	210
11	FLYNN DARRIN INC	219
12	FRUIT RANCH LLC	281
13	FULLER RICHARD LLC	387
14	ANDERSON RICHARD	387
15	GREENWOOD RUSSELL C CAROL	1548
16	ANDERSON RICHARD CO	1885
17	ANDERSON RICHARD CO	1885
18	ANDERSON RICHARD CO	1885
19	BARRETT THOMAS FORE	210
20	TRULLIER INC	210
21	SCHUMACHER WALLACE H CAROL	80
22	DILLON LARA W	79
23	FRUIT RANCH LLC	281
24	DILLON LARA W	79
25	FULLER RICHARD LLC	387
26	FULLER RICHARD LLC	387
27	FULLER RICHARD LLC	387
28	PIC RANCH INC	398
29	CRANE RICHARD W	198
30	CRANE RICHARD W	198
31	FULLER RICHARD LLC	387
32	FULLER RICHARD LLC	387
33	FULLER RICHARD LLC	387
34	FULLER RICHARD LLC	387
35	FULLER RICHARD LLC	387
36	FULLER RICHARD LLC	387
37	FULLER RICHARD LLC	387
38	FULLER RICHARD LLC	387
39	FULLER RICHARD LLC	387
40	FULLER RICHARD LLC	387
41	FULLER RICHARD LLC	387
42	FULLER RICHARD LLC	387
43	FULLER RICHARD LLC	387
44	FULLER RICHARD LLC	387
45	FULLER RICHARD LLC	387
46	FULLER RICHARD LLC	387
47	FULLER RICHARD LLC	387
48	FULLER RICHARD LLC	387
49	FULLER RICHARD LLC	387
50	FULLER RICHARD LLC	387

51	MONTANA STATE LIBRARY	205
52	MONTANA STATE LIBRARY	205
53	MONTANA STATE LIBRARY	205
54	MONTANA STATE LIBRARY	205
55	MONTANA STATE LIBRARY	205
56	MONTANA STATE LIBRARY	205
57	MONTANA STATE LIBRARY	205
58	MONTANA STATE LIBRARY	205
59	MONTANA STATE LIBRARY	205
60	MONTANA STATE LIBRARY	205
61	MONTANA STATE LIBRARY	205
62	MONTANA STATE LIBRARY	205
63	MONTANA STATE LIBRARY	205
64	MONTANA STATE LIBRARY	205
65	MONTANA STATE LIBRARY	205
66	MONTANA STATE LIBRARY	205
67	MONTANA STATE LIBRARY	205
68	MONTANA STATE LIBRARY	205
69	MONTANA STATE LIBRARY	205
70	MONTANA STATE LIBRARY	205
71	MONTANA STATE LIBRARY	205
72	MONTANA STATE LIBRARY	205
73	MONTANA STATE LIBRARY	205
74	MONTANA STATE LIBRARY	205
75	MONTANA STATE LIBRARY	205
76	MONTANA STATE LIBRARY	205
77	MONTANA STATE LIBRARY	205
78	MONTANA STATE LIBRARY	205
79	MONTANA STATE LIBRARY	205
80	MONTANA STATE LIBRARY	205

81	MONTANA STATE LIBRARY	205
82	MONTANA STATE LIBRARY	205
83	MONTANA STATE LIBRARY	205
84	MONTANA STATE LIBRARY	205
85	MONTANA STATE LIBRARY	205
86	MONTANA STATE LIBRARY	205
87	MONTANA STATE LIBRARY	205
88	MONTANA STATE LIBRARY	205
89	MONTANA STATE LIBRARY	205
90	MONTANA STATE LIBRARY	205
91	MONTANA STATE LIBRARY	205
92	MONTANA STATE LIBRARY	205
93	MONTANA STATE LIBRARY	205
94	MONTANA STATE LIBRARY	205
95	MONTANA STATE LIBRARY	205
96	MONTANA STATE LIBRARY	205
97	MONTANA STATE LIBRARY	205
98	MONTANA STATE LIBRARY	205
99	MONTANA STATE LIBRARY	205
100	MONTANA STATE LIBRARY	205

101	MONTANA STATE LIBRARY	205
102	MONTANA STATE LIBRARY	205
103	MONTANA STATE LIBRARY	205
104	MONTANA STATE LIBRARY	205
105	MONTANA STATE LIBRARY	205
106	MONTANA STATE LIBRARY	205
107	MONTANA STATE LIBRARY	205
108	MONTANA STATE LIBRARY	205
109	MONTANA STATE LIBRARY	205
110	MONTANA STATE LIBRARY	205
111	MONTANA STATE LIBRARY	205
112	MONTANA STATE LIBRARY	205
113	MONTANA STATE LIBRARY	205
114	MONTANA STATE LIBRARY	205
115	MONTANA STATE LIBRARY	205
116	MONTANA STATE LIBRARY	205
117	MONTANA STATE LIBRARY	205
118	MONTANA STATE LIBRARY	205
119	MONTANA STATE LIBRARY	205
120	MONTANA STATE LIBRARY	205

121	MONTANA STATE LIBRARY	205
122	MONTANA STATE LIBRARY	205
123	MONTANA STATE LIBRARY	205
124	MONTANA STATE LIBRARY	205
125	MONTANA STATE LIBRARY	205
126	MONTANA STATE LIBRARY	205
127	MONTANA STATE LIBRARY	205
128	MONTANA STATE LIBRARY	205
129	MONTANA STATE LIBRARY	205
130	MONTANA STATE LIBRARY	205

131	MONTANA STATE LIBRARY	205
132	MONTANA STATE LIBRARY	205
133	MONTANA STATE LIBRARY	205
134	MONTANA STATE LIBRARY	205
135	MONTANA STATE LIBRARY	205
136	MONTANA STATE LIBRARY	205
137	MONTANA STATE LIBRARY	205
138	MONTANA STATE LIBRARY	205
139	MONTANA STATE LIBRARY	205
140	MONTANA STATE LIBRARY	205
141	MONTANA STATE LIBRARY	205
142	MONTANA STATE LIBRARY	205
143	MONTANA STATE LIBRARY	205
144	MONTANA STATE LIBRARY	205
145	MONTANA STATE LIBRARY	205
146	MONTANA STATE LIBRARY	205
147	MONTANA STATE LIBRARY	205
148	MONTANA STATE LIBRARY	205
149	MONTANA STATE LIBRARY	205
150	MONTANA STATE LIBRARY	205

Private
State Lands
Forest Service
Bureau of Land Management
National Park Service
Other Federal Land
Fish and Wildlife Service

Road
Primitive Road
River
Stream/Creek
Intermittent Creek
Township
County Border
Wildlife Management Area

MFWP - WMA
Lake/Reservoir
Interstate
Secondary Highway
Highway

NOTES: Not all legend items may appear on this map. Features shown on this map do not imply public access to any lands. The land data displayed on this map may not be complete and may contain errors in boundary locations and/or coding.

DISCLAIMER: The MT Natural Heritage Program, MT State Library, MT Dept of Administration and MT Dept of Revenue make no representations or warranties whatsoever with respect to the accuracy or completeness of the data contained in these maps and assumes no responsibility for the usability of these data for a particular purpose. These agencies will not be liable for any damages incurred as a result of errors displayed here. The ownership boundaries displayed on this map are not based on deed survey data and are not suitable for property surveys. This map displays public and private land ownership information derived from several sources and continues to be corrected and updated.

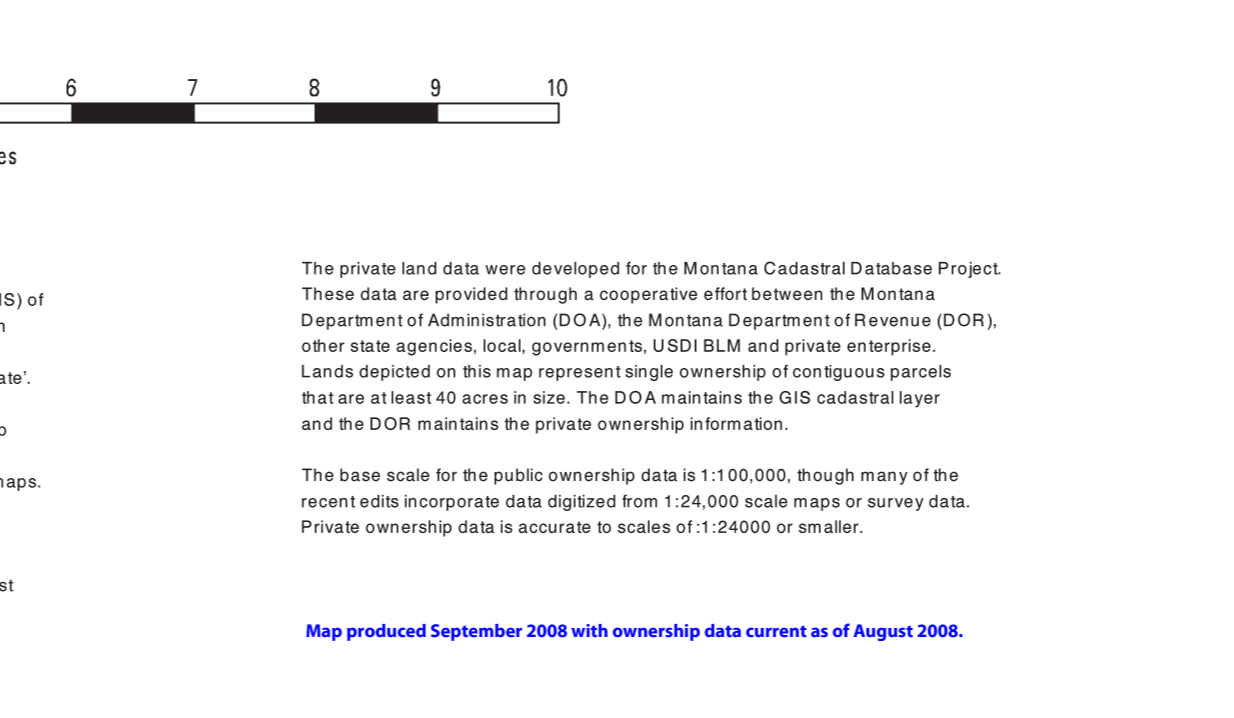
SOURCES / ACKNOWLEDGMENTS: This map was produced as a joint effort between the MT Dept of Fish, Wildlife, and Parks (FWP) and the Montana Natural Resource Information System (NRIS) of the MT State Library, in response to Montana Code Annotated § 7-206, which directs the FWP to "...work cooperatively with all state and federal land management agencies...to develop accurate land ownership maps...in the State."

The public land data from the MT Natural Heritage Program land stewardship data collection. Much of this data was originally digitized by the Bureau of Land Management (BLM) from 1:100,000 scale BLM Surface Management District maps. Additional information, corrections and updates (especially for vital lands and private lands) were added by the University of Montana, Wildlife Spatial Analysis Unit during 1996-1998. Since 1998, the Montana Natural Heritage Program has made numerous updates and corrections (especially for state trust lands, Accession Plans, Wildlife & Park areas, US Fish & Wildlife Service areas, and conservation easements). These data are based on data supplied by the various public agencies and land trusts, and have not been verified against county or Montana Department of Revenue records.

The private land data were developed for the Montana Cadastral Database Project. These data are provided through a cooperative effort between the Montana Department of Administration (DOA), the Montana Department of Revenue (DOR), other state agencies, local governments, USFS BLM and private enterprises. Landscapes on this map represent ownership of contiguous parcels that are at least 40 acres in size. The DOA maintains the GIS cadastral layer and the DOR maintains the private ownership information.

The base scale for the public ownership data is 1:100,000. Though many of the recent data incorporate data digitized from 1:24,000 scale maps or survey data. Private ownership data is accurate to scales of 1:24,000 or smaller.

Map produced September 2008 with ownership data current as of August 2008.



41100	41150	41200	41250	41300	41350	41400	41450	41500
41100	41150	41200	41250	41300	41350	41400	41450	41500
41150	41200	41250	41300	41350	41400	41450	41500	41550
41200	41250	41300	41350	41400	41450	41500	41550	41600
41250	41300	41350	41400	41450	41500	41550	41600	41650
41300	41350	41400	41450	41500	41550	41600	41650	41700
41350	41400	41450	41500	41550	41600	41650	41700	41750
41400	41450	41500	41550	41600	41650	41700	41750	41800
41450	41500	41550	41600	41650	41700	41750	41800	41850
41500	41550	41600	41650	41700	41750	41800	41850	41900