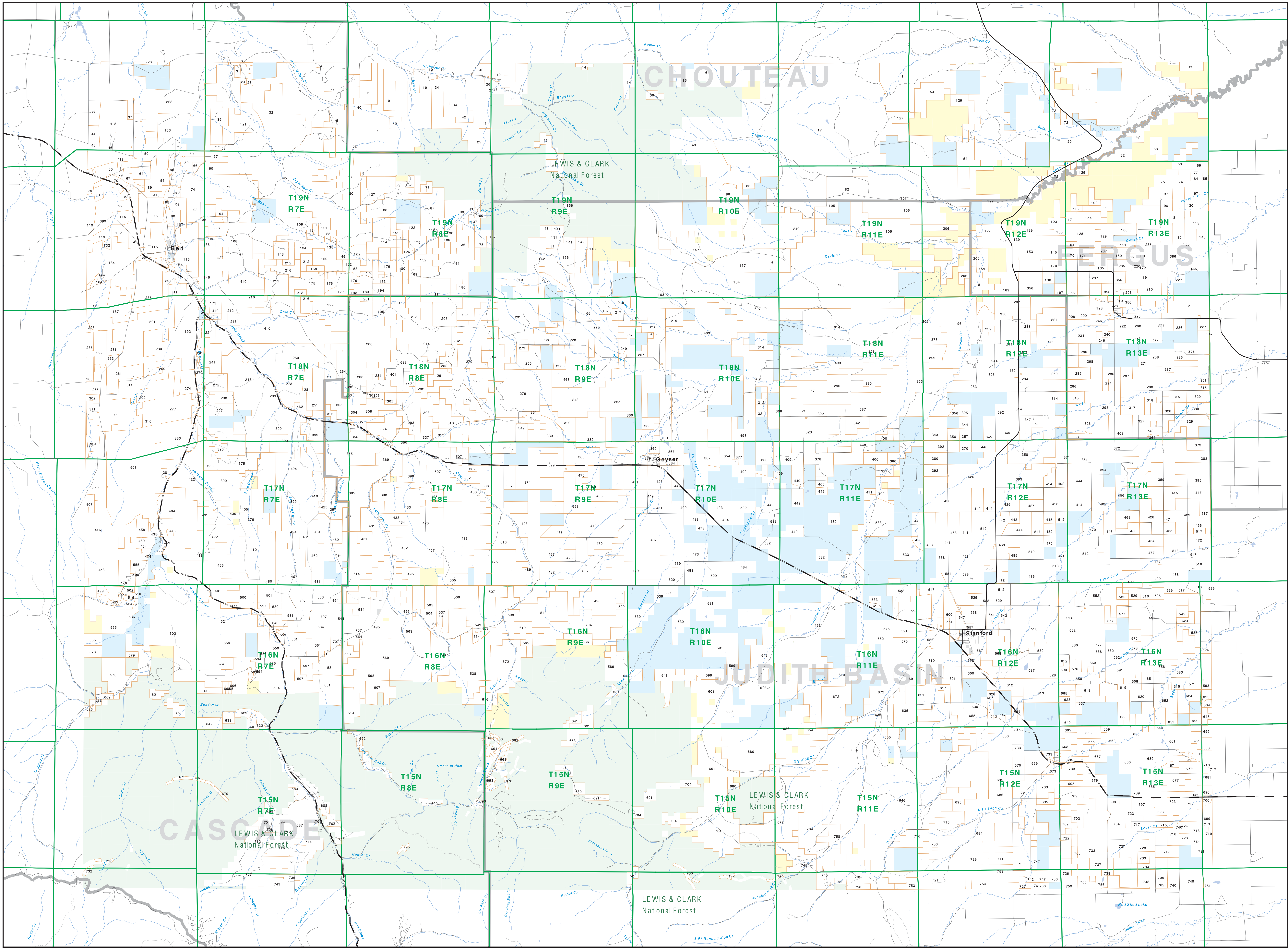


# Private Land Ownership Identification BELT - (47110a)



**Legend**

- Private
- State Lands
- Local Govt
- Native American
- Bureau of Land Management
- National Park Service
- Other Federal Land
- Fish and Wildlife Service
- Interstate
- Secondary Highway
- Highway
- Primitive Road
- River
- Stream/Creek
- Intermittent Creek
- Township
- County Border
- Fish Wildlife & Parks Wildlife Management Area

**NOTE:** Not all legend items may appear on this map. Features shown on this map do not necessarily provide access to any lands. The best source data displayed on this map was originally from the Montana Department of Fish, Wildlife & Parks, which may contain errors in boundary locations and/or coding.

**DISCLAIMER:** The MT Natural Heritage Program, MT State Library, MT Dept of Administration and MT Dept of Agriculture make no warranty or representation as to the accuracy or completeness of the data contained in these maps and are not responsible for any errors or omissions. The user assumes all responsibility for the use of the information displayed on this map. The user agrees to hold the Montana Department of Fish, Wildlife & Parks harmless for any and all claims, damages, or losses, including reasonable attorneys' fees, arising from the use of this map. The user further agrees to hold the Montana Department of Fish, Wildlife & Parks harmless for any and all claims, damages, or losses, including reasonable attorneys' fees, arising from the use of this map.

**SOURCES / ACKNOWLEDGEMENTS**

This map was produced as a joint effort between the MT Dept of Fish, Wildlife & Parks and the Montana Natural Resource Information System (NRIS) of the MT State Library, in response to Montana Code Annotated §7-3-209, which requires the Department of Fish, Wildlife & Parks, in cooperation with appropriate management agencies, to develop accurate land ownership maps in the State.

The public land data is from the MT Natural Heritage Program land ownership data (BLM) from a 1:100,000 scale BLM Surface Management Status map. The Bureau of Land Management (BLM) is the lead agency for public lands in Montana. The BLM is a federal agency within the U.S. Department of the Interior. The BLM is responsible for managing public lands in Montana. The BLM is a federal agency within the U.S. Department of the Interior. The BLM is responsible for managing public lands in Montana. The BLM is a federal agency within the U.S. Department of the Interior. The BLM is responsible for managing public lands in Montana.

The base scale for the public ownership data is 1:100,000. Though many of the private ownership data are digitized from a 1:250,000 scale map or survey data. Private ownership data is accurate to a scale of 1:24000 or smaller.

**Map published September 2008 with ownership data current as of August 2008.**

**USGS 100,000 Scale Quadrangle Index**

81100	81110	81120	81130	81140	81150	81160	81170	81180	81190	81200
81100	81110	81120	81130	81140	81150	81160	81170	81180	81190	81200
81210	81220	81230	81240	81250	81260	81270	81280	81290	81300	81310
81210	81220	81230	81240	81250	81260	81270	81280	81290	81300	81310
81320	81330	81340	81350	81360	81370	81380	81390	81400	81410	81420
81320	81330	81340	81350	81360	81370	81380	81390	81400	81410	81420
81430	81440	81450	81460	81470	81480	81490	81500	81510	81520	81530
81430	81440	81450	81460	81470	81480	81490	81500	81510	81520	81530