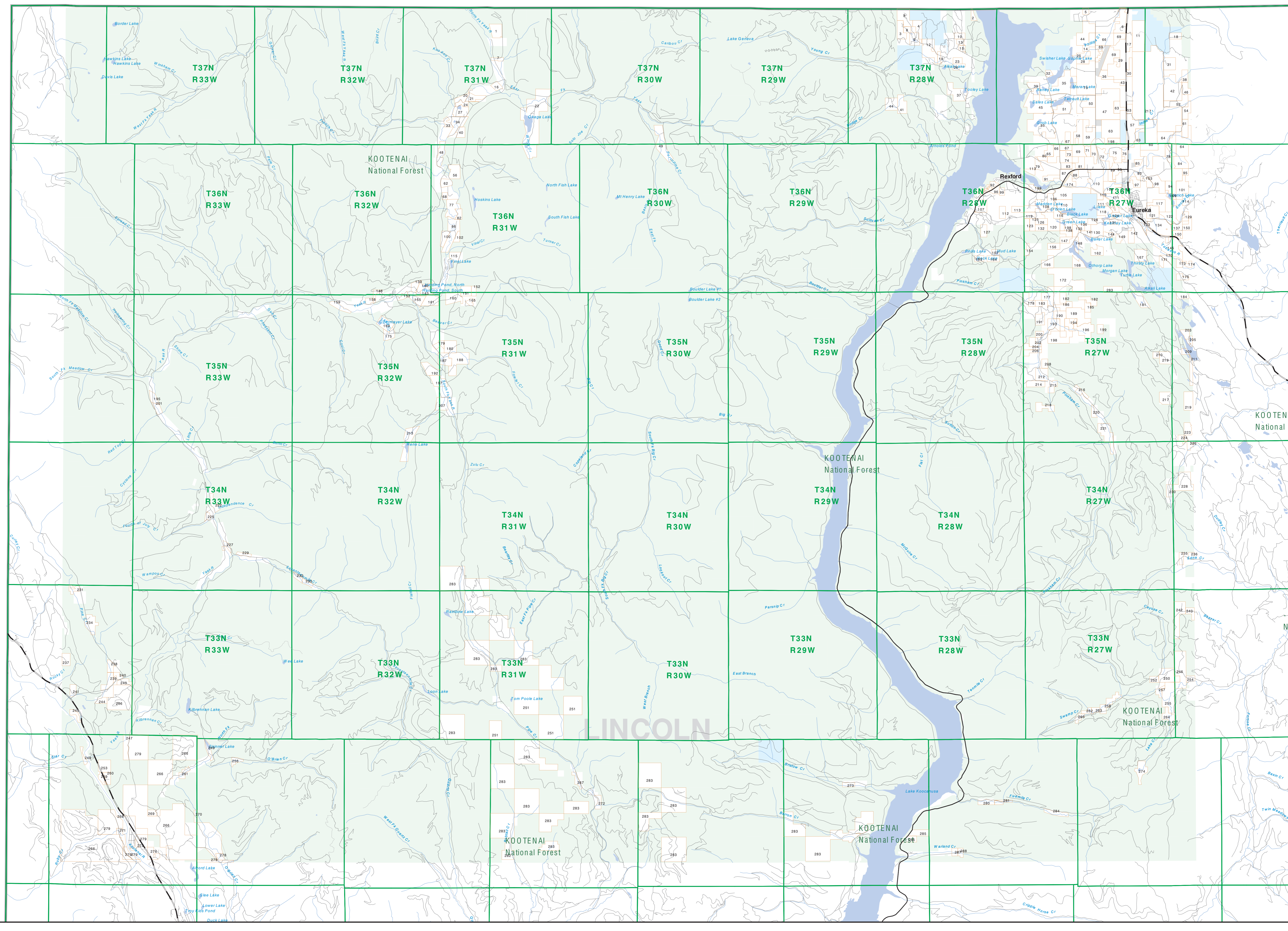


Private Land Ownership Identification

YAAK RIVER - (48115b)



Legend

- Private
- State Lands
- Forest Service
- Bureau of Land Management
- National Park Service
- Other Federal Land
- Fish and Wildlife Service
- Road
- Primitive Road
- River
- Stream/Creek
- Intermittent Creek
- Township
- County Border
- Wildlife Management Area
- MFWP - WMA
- Lake/Reservoir
- Interstate
- Secondary Highway
- Highway

NOTES:
 Not all legend items may appear on this map.
 Features shown on this map do not imply public access to any lands.
 The land status data displayed on this map may not be complete and may contain errors in boundary locations and/or coding.
DISCLAIMERS:
 The MT Natural Heritage Program, MT State Library, MT Dept of Administration and MT Dept of Revenue make no representation or warranties whatsoever with respect to the accuracy or completeness of the data contained in these maps and assume no responsibility for the suitability of these data for a particular purpose. These agencies will not be liable for any damages incurred as a result of errors displayed here.
 The ownership boundaries displayed on this map are not based on land survey data and are not a substitute for property surveys.
 This map displays public and private land ownership information derived from several sources and continues to be corrected and updated.

SOURCES / ACKNOWLEDGEMENTS
 This map was produced as a joint effort between the MT Dept of Fish, Wildlife, and Parks (FWP) and the Montana Natural Resource Information System (NRIS) of the MT State Library, in response to Montana Code Annotated 87-3-308, which directs the FWP to "work cooperatively with all state and federal land management agencies... to develop accurate land ownership maps... in the State".
 The public land data is from the MT Natural Heritage Program land stewardship data collection. Much of this data was originally digitized by the Bureau of Land Management (BLM) from 1:50,000 scale BLM Surface Management Status maps. Additional information, corrections and updates (especially for tribal lands) (private lands) were added by the University of Montana, Wildlife Special Analysis Unit, during 1990-1998. Since 1998, the Montana Natural Heritage Program has made numerous updates and corrections necessary for state trust lands, Montana Fish, Wildlife & Parks areas, US Fish & Wildlife Service areas, and conservation easements. These data are based on data supplied by the various public agencies and land trusts, and have not been worked against county or Montana Department of Revenue records.

The private land data were developed for the Montana Cadastral Database Project. These data are provided through a cooperative effort between the Montana Department of Administration (DOA), the Montana Department of Revenue (DOR), other state agencies, local governments, USDBLM and private enterprise. Lands depicted on this map represent single ownership of contiguous parcels that are at least 40 acres in size. The DOA maintains the GIS cadastral layer and the DOR maintains the private ownership information.
 The base scale for the public ownership data is 1:100,000, though many of the recent data incorporate data digitized from 1:24,000 scale maps or survey data. Private ownership data is accurate to scales of 1:24,000 or smaller.
 Map produced September 2007 with ownership data current as of August 2007.

USGS 100,000 Scale Quadrangle Index

81100	81110	81120	81130	81140	81150	81160	81170	81180	81190	81200
81100	81110	81120	81130	81140	81150	81160	81170	81180	81190	81200
81100	81110	81120	81130	81140	81150	81160	81170	81180	81190	81200
81100	81110	81120	81130	81140	81150	81160	81170	81180	81190	81200
81100	81110	81120	81130	81140	81150	81160	81170	81180	81190	81200
81100	81110	81120	81130	81140	81150	81160	81170	81180	81190	81200
81100	81110	81120	81130	81140	81150	81160	81170	81180	81190	81200
81100	81110	81120	81130	81140	81150	81160	81170	81180	81190	81200
81100	81110	81120	81130	81140	81150	81160	81170	81180	81190	81200
81100	81110	81120	81130	81140	81150	81160	81170	81180	81190	81200