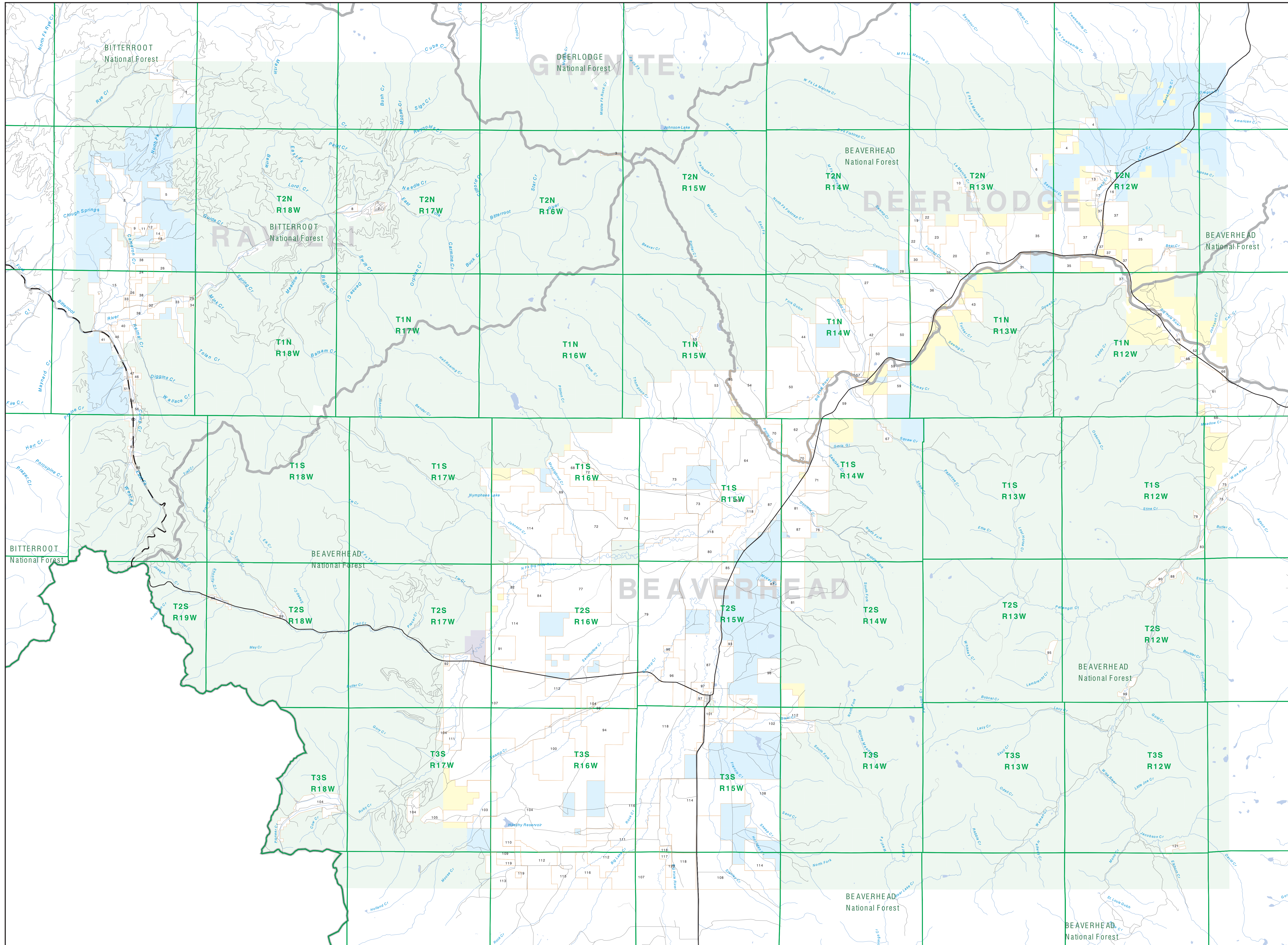


Private Land Ownership Identification

WISDOM - (45113b)



- 1: C RANCH LLC, 133
- 2: JH MILLER RANCHES LLC, 2192
- 3: USA FOREST SERVICE, 47
- 4: CANYON INVESTMENT P, 108
- 5: MONTANA DEPT OF FISH, WILDLIFE, 387
- 6: BOY SCOUTS OF AMERICA T CONGR, 320
- 7: BLUE SPRINGS RESORTS, COOP, 114
- 8: FRANCIS ROBERT S, SHARON, 139
- 9: ROCK INVESTMENTS LLC, 12
- 10: WENDLER DAVID E, 278
- 11: STREET JASON, 58
- 12: HANES BENNETH D, LIBBY DORRHO, 56
- 13: MOORE STEVEN B, 107
- 14: MOORE STEVEN B, 107
- 15: BERTCH COMPANY LLC, 280
- 16: WHITE MARTIN A, SHELBY M, 154
- 17: SPOLAR JOHN, 364
- 18: HANES BENNETH D AND, 51
- 19: DRINGER JOHN S TRUST, 338
- 20: LUCKY THOMAS C AND, REV, 104
- 21: LAMARCHE CREEK RANCH, 180
- 22: BACON RAY RANCH COMPANY, 1038
- 23: HAN FROST, 486
- 24: WATER SIDE ENTERPRISES LLC, 1754
- 25: WOODRUFF JASON TRUST, 88
- 26: PALISADES CATTLE COMPANY, 384
- 27: THOMPSON CLODIA, 158
- 28: THOMPSON CLODIA, 158
- 29: AL SPEAR, JANE STEPHAN REA, 421
- 30: CRANE PATRICIA AND, 119
- 31: WESTCOTE RANCH COMPANY, 207
- 32: KEY JAMES S, SUSAN S, 59
- 33: BACON RAY RANCH CO, 387
- 34: LAY J CROSS RANCH INC, 1131
- 35: JENSEN JAMES, 41
- 36: BERNHILL MARVELL R TRUSTEE, 201
- 37: ENMAN GERRAD, 110
- 38: KAY RANCH, 479
- 39: BACON RAY RANCH, 879
- 40: BIRD HOLE RANCH, 1487
- 41: BOVETTE VAN ROY, 42
- 42: CAMP CREEK RANCH INC, 413
- 43: MONTANA DEPARTMENT OF TRANSPOR, 42
- 44: SPOLAR JOHN, 364
- 45: SPOLAR JOHN, 364
- 46: BACON RAY RANCH, 879
- 47: SANDOZ VISTA RANCH LLC, 112
- 48: BACON RAY RANCH, 879
- 49: PAGE CLIFTON R, 47
- 50: MURPHY JOHN W, 384
- 51: MURPHY JOHN W, 384
- 52: CHRISTENSEN CATTLE COMPANY, 1118
- 53: CHRISTENSEN E RANCH RANCHING, 1022
- 54: LUND LARRY E, 84
- 55: SPARROW RANCH GRADING ASSOC, 3802
- 56: HONEY HAWK HILL STONE, 48
- 57: QUARTER CIRCLE ST RANCH INC, 2514
- 58: LOVELL JOHN E, 191
- 59: BACON RAY RANCH, 879
- 60: LEWIS JOHN CONTRACTING INC, 2481
- 61: LEWIS JOHN CONTRACTING INC, 2481
- 62: PRODUCE COMPANY, 5893
- 63: CRANE RANCH LP, 448
- 64: QUARTER CIRCLE ST RANCH INC, 2514
- 65: ELSA FRED, 509
- 66: CONNOLLY J W, 384
- 67: CLUMPHAM RANCHES, 652
- 68: CRANE RANCH, 479
- 69: ERB LIVESIDE, 2136
- 70: WEAVER RAYMOND R, 644
- 71: WEAVER RAYMOND R, 644
- 72: WEAVER RAYMOND R, 644
- 73: WEAVER RAYMOND R, 644
- 74: ELSE JENNIE L, 388
- 75: WEAVER RAYMOND R, 644
- 76: WEAVER RAYMOND R, 644
- 77: WEAVER RAYMOND R, 644
- 78: WEAVER RAYMOND R, 644
- 79: WEAVER RAYMOND R, 644
- 80: WEAVER RAYMOND R, 644
- 81: WEAVER RAYMOND R, 644
- 82: WEAVER RAYMOND R, 644
- 83: WEAVER RAYMOND R, 644
- 84: WEAVER RAYMOND R, 644
- 85: WEAVER RAYMOND R, 644
- 86: WEAVER RAYMOND R, 644
- 87: WEAVER RAYMOND R, 644
- 88: WEAVER RAYMOND R, 644
- 89: WEAVER RAYMOND R, 644
- 90: WEAVER RAYMOND R, 644
- 91: WEAVER RAYMOND R, 644
- 92: WEAVER RAYMOND R, 644
- 93: WEAVER RAYMOND R, 644
- 94: WEAVER RAYMOND R, 644
- 95: WEAVER RAYMOND R, 644
- 96: WEAVER RAYMOND R, 644
- 97: WEAVER RAYMOND R, 644
- 98: WEAVER RAYMOND R, 644
- 99: WEAVER RAYMOND R, 644
- 100: WEAVER RAYMOND R, 644
- 101: WEAVER RAYMOND R, 644
- 102: WEAVER RAYMOND R, 644
- 103: WEAVER RAYMOND R, 644
- 104: WEAVER RAYMOND R, 644
- 105: WEAVER RAYMOND R, 644
- 106: WEAVER RAYMOND R, 644
- 107: WEAVER RAYMOND R, 644
- 108: WEAVER RAYMOND R, 644
- 109: WEAVER RAYMOND R, 644
- 110: WEAVER RAYMOND R, 644
- 111: WEAVER RAYMOND R, 644
- 112: WEAVER RAYMOND R, 644
- 113: WEAVER RAYMOND R, 644
- 114: WEAVER RAYMOND R, 644
- 115: WEAVER RAYMOND R, 644
- 116: WEAVER RAYMOND R, 644
- 117: WEAVER RAYMOND R, 644
- 118: WEAVER RAYMOND R, 644
- 119: WEAVER RAYMOND R, 644
- 120: WEAVER RAYMOND R, 644
- 121: WEAVER RAYMOND R, 644

- Private
- Forest Service
- Bureau of Land Management
- National Park Service
- Other Federal Land
- Fish and Wildlife Service
- State Lands
- Local Govt
- Native American
- MFWP - WMA
- Lake/Reservoir
- Interstate
- Secondary Highway
- Highway
- Road
- Primitive Road
- River
- Stream/Creek
- Intermittent Creek
- Township
- County Border
- Fish Wildlife & Parks Wildlife Management Area

NOTES:
 Not all legend items may appear on this map.
 Features shown on this map do not imply public access to any lands.
 The land status data displayed on this map may not be complete and may contain errors in boundary locations and/or coding.
DISCLAIMERS:
 The MT Natural Heritage Program, MT State Library, MT Dept of Administration and MT Dept of Revenue make no representations or warranties whatsoever with respect to the accuracy or completeness of the data contained in these maps and assumes no responsibility for the suitability of these data for a particular purpose. These agencies will not be liable for any damages incurred as a result of errors displayed here.
 The ownership boundaries displayed on this map are not based on land survey data and are not a substitute for property surveys.
 This map displays public and private land ownership information derived from several sources and continues to be corrected and updated.

SOURCES / ACKNOWLEDGEMENTS
 This map was produced as a joint effort between the MT Dept of Fish, Wildlife and Parks (FWP) and the Montana Natural Resource Information System (NRIS) of the MT State Library, in response to Montana Code Annotated 87-3-208, which directs the FWP to "...work cooperatively with all state and federal land management agencies...to develop accurate land ownership maps...in the State".
 The public land data from the MT Natural Heritage Program land ownership data collection. Much of this data was originally digitized by the Bureau of Land Management (BLM) from 1:100,000 scale BLM Surface Management Status maps. Additional information, corrections and updates (especially for tribal lands and private lands) were added by the University of Montana, Wildlife Spatial Analysis Unit, during 1996-1998. Since 1998, the Montana Natural Heritage Program has made numerous updates and corrections (especially for state trust lands, Montana Fish, Wildlife & Parks areas, US Fish & Wildlife Service areas, and conservation easements). These data are based on data supplied by the various public agencies and land trusts, and have not been verified against county or Montana Department of Revenue records.

The private land data were developed for the Montana Cadastral Database Project. These data are provided through a cooperative effort between the Montana Department of Administration (DOA), the Montana Department of Revenue (DOR), other state agencies, local governments, USDO BLM and private enterprise. Lands displayed on this map represent single ownership of contiguous parcels that are at least 40 acres in size. The DOA maintains the GIS cadastral layer and the DOR maintains the private ownership information.
 The base scale for the public ownership data is 1:100,000, though many of the recent edits incorporated data digitized from 1:24,000 scale maps or survey data. Private ownership data is accurate to scale of 1:20,000 or smaller.
 Map produced September 2007 with ownership data current as of August 2007.

