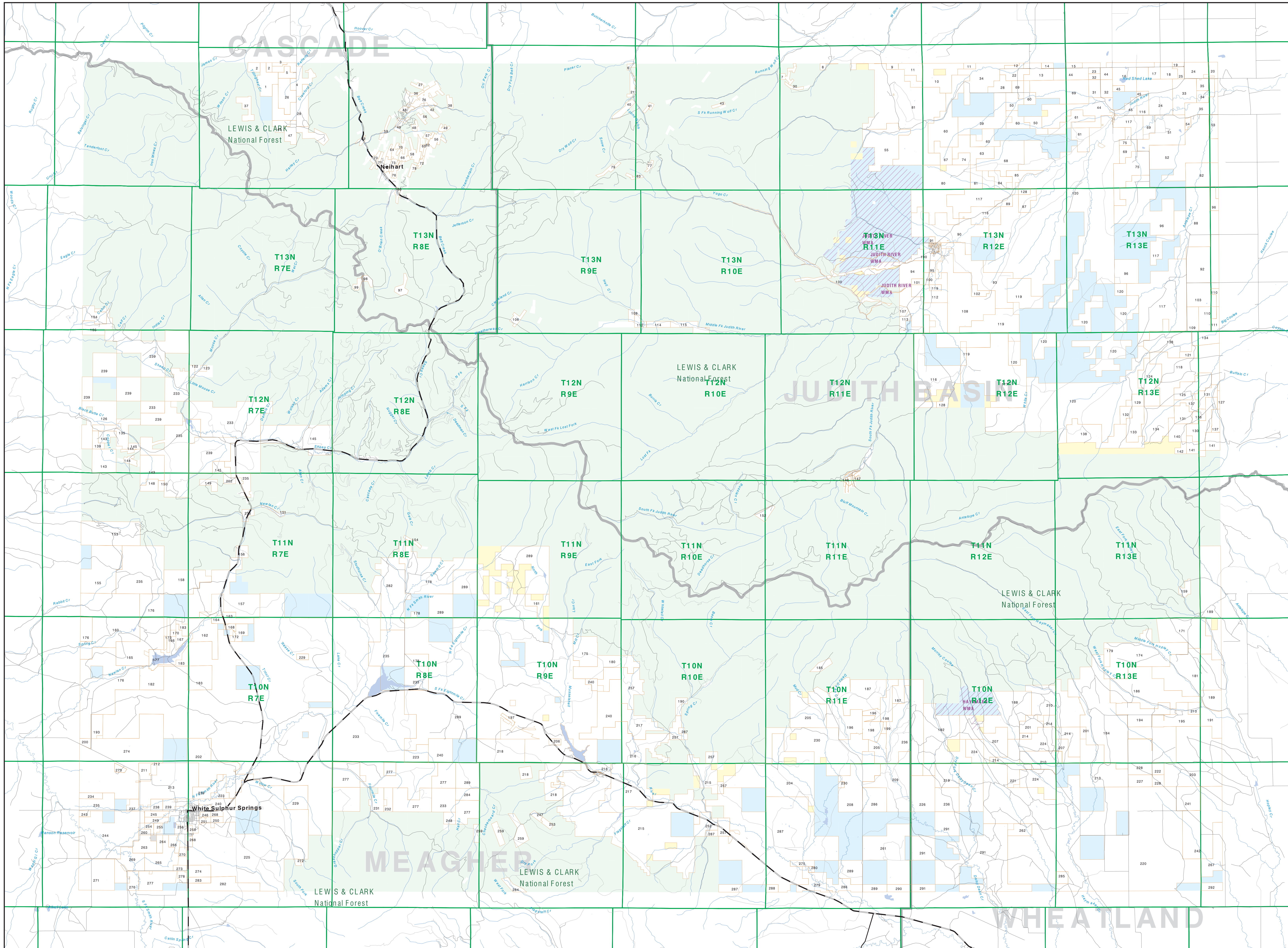


Private Land Ownership Identification WHITE SULPHUR SPRINGS - (46110b)



1	ROBERTSON ROBERT ANN K 506	251	THE BACKER FAMILY FEUDABLE T 75
2	BROWN TONY 103	252	BEAUFORD COLONY 438
3	BRIDGES JOHN 381	253	WALKER LARRY D USA 2 76
4	BRIDGES JOHN D JOHN D 103	254	WALKER LARRY D USA 2 76
5	BRINE CLYDE R WANCY 102	255	WALKER LARRY D USA 2 76
6	BROWN ROBERT W BRUNA L 42	256	WALKER LARRY D USA 2 76
7	SURER JOHN FLETCHER 138	257	WALKER LARRY D USA 2 76
8	BRADSHILL 48	258	WALKER LARRY D USA 2 76
9	LARSON ROBERT 82	259	WALKER LARRY D USA 2 76
10	RECHOWITZ FAMILY TRUST 1055	260	WALKER LARRY D USA 2 76
11	WELLS DONALD C 309	261	WALKER LARRY D USA 2 76
12	LARSON LYLE 82	262	WALKER LARRY D USA 2 76
13	ST LARSON ARNO LOUI 469	263	WALKER LARRY D USA 2 76
14	KIDWELL W 17	264	WALKER LARRY D USA 2 76
15	ROBERTY JOHN A JUDY C 87	265	WALKER LARRY D USA 2 76
16	HICKS SHEILA DENZI F 40	266	WALKER LARRY D USA 2 76
17	WIK ENTERPRISES INC 281	267	WALKER LARRY D USA 2 76
18	WIK ENTERPRISES INC 281	268	WALKER LARRY D USA 2 76
19	WIK ENTERPRISES INC 281	269	WALKER LARRY D USA 2 76
20	WIK ENTERPRISES INC 281	270	WALKER LARRY D USA 2 76
21	WIK ENTERPRISES INC 281	271	WALKER LARRY D USA 2 76
22	WIK ENTERPRISES INC 281	272	WALKER LARRY D USA 2 76
23	WIK ENTERPRISES INC 281	273	WALKER LARRY D USA 2 76
24	WIK ENTERPRISES INC 281	274	WALKER LARRY D USA 2 76
25	WIK ENTERPRISES INC 281	275	WALKER LARRY D USA 2 76
26	WIK ENTERPRISES INC 281	276	WALKER LARRY D USA 2 76
27	WIK ENTERPRISES INC 281	277	WALKER LARRY D USA 2 76
28	WIK ENTERPRISES INC 281	278	WALKER LARRY D USA 2 76
29	WIK ENTERPRISES INC 281	279	WALKER LARRY D USA 2 76
30	WIK ENTERPRISES INC 281	280	WALKER LARRY D USA 2 76
31	WIK ENTERPRISES INC 281	281	WALKER LARRY D USA 2 76
32	WIK ENTERPRISES INC 281	282	WALKER LARRY D USA 2 76
33	WIK ENTERPRISES INC 281	283	WALKER LARRY D USA 2 76
34	WIK ENTERPRISES INC 281	284	WALKER LARRY D USA 2 76
35	WIK ENTERPRISES INC 281	285	WALKER LARRY D USA 2 76
36	WIK ENTERPRISES INC 281	286	WALKER LARRY D USA 2 76
37	WIK ENTERPRISES INC 281	287	WALKER LARRY D USA 2 76
38	WIK ENTERPRISES INC 281	288	WALKER LARRY D USA 2 76
39	WIK ENTERPRISES INC 281	289	WALKER LARRY D USA 2 76
40	WIK ENTERPRISES INC 281	290	WALKER LARRY D USA 2 76
41	WIK ENTERPRISES INC 281	291	WALKER LARRY D USA 2 76
42	WIK ENTERPRISES INC 281	292	WALKER LARRY D USA 2 76
43	WIK ENTERPRISES INC 281	293	WALKER LARRY D USA 2 76
44	WIK ENTERPRISES INC 281	294	WALKER LARRY D USA 2 76
45	WIK ENTERPRISES INC 281	295	WALKER LARRY D USA 2 76
46	WIK ENTERPRISES INC 281	296	WALKER LARRY D USA 2 76
47	WIK ENTERPRISES INC 281	297	WALKER LARRY D USA 2 76
48	WIK ENTERPRISES INC 281	298	WALKER LARRY D USA 2 76
49	WIK ENTERPRISES INC 281	299	WALKER LARRY D USA 2 76
50	WIK ENTERPRISES INC 281	300	WALKER LARRY D USA 2 76

Legend

- Private
- State Lands
- Forest Service
- Bureau of Land Management
- National Park Service
- Other Federal Land
- Fish and Wildlife Service
- Road
- Primitive Road
- River
- Stream/Creek
- Intermittent Creek
- Township
- County Border
- Fish Wildlife & Parks Wildlife Management Area
- Local Govt
- Native American
- MFWP - WMA
- Lake/Reservoir
- Interstate
- Secondary Highway
- Highway

NOTES:
Not all legend items may appear on this map.
Features shown on this map do not imply public access to any lands.
The land status data displayed on this map may not be complete and may contain errors in boundary locations and/or coding.
DISCLAIMERS:
The MT Natural Heritage Program, MT State Library, MT Dept of Administration and MT Dept of Revenue make no representation or warranties whatsoever with respect to the accuracy or completeness of the data contained in these maps and assume no responsibility for the suitability of these data for a particular purpose. These agencies will not be liable for any damages incurred as a result of errors displayed here. The ownership boundaries displayed on this map are not based on land survey data and are not a substitute for property surveys. This map displays public and private land ownership information derived from several sources and continues to be corrected and updated.

SOURCES / ACKNOWLEDGEMENTS
This map was produced as a joint effort between the MT Dept. of Fish, Wildlife, and Parks (FWP) and the Montana Natural Resource Information System (NRIS) of the MT State Library. In response to Montana Code Annotated §7-3-508, which directs the FWP, the NRIS, and the Department of Revenue (DOR), to work cooperatively with all state and federal land management agencies, to develop accurate land ownership maps. The DOR maintains the private ownership information.

The private land data were developed for the Montana Cadastral Database Project. These data are provided through a cooperative effort between the Montana Department of Administration (DORA), the Montana Department of Revenue (DOR), other state agencies, local governments, USDI/BLM and private enterprise. Land ownership data on this map represent large ownership of contiguous parcels that are at least 60 acres in size. The DOR maintains the GIS database layer, and the DOR maintains the private ownership information.

The base scale for the public ownership data is 1:50,000, though many of the private data incorporate data digitized from 1:24,000 scale maps or survey data. Private ownership data is accurate to a scale of 1:24,000 or smaller.
Map produced September 2007 with ownership data current as of August 2007.

USGS 100,000 Scale Quadrangle Index

8100	48110	48111	48112	48113	48114	48115	48116	48117	48118	48119	48120	48121	48122	48123	48124	48125	48126	48127	48128	48129	48130	48131	48132	48133	48134	48135	48136	48137	48138	48139	48140	48141	48142	48143	48144	48145	48146	48147	48148	48149	48150	48151	48152	48153	48154	48155	48156	48157	48158	48159	48160	48161	48162	48163	48164	48165	48166	48167	48168	48169	48170	48171	48172	48173	48174	48175	48176	48177	48178	48179	48180	48181	48182	48183	48184	48185	48186	48187	48188	48189	48190	48191	48192	48193	48194	48195	48196	48197	48198	48199	48200
------	-------	-------	-------	-------	-------	-------	-------	-------	-------	-------	-------	-------	-------	-------	-------	-------	-------	-------	-------	-------	-------	-------	-------	-------	-------	-------	-------	-------	-------	-------	-------	-------	-------	-------	-------	-------	-------	-------	-------	-------	-------	-------	-------	-------	-------	-------	-------	-------	-------	-------	-------	-------	-------	-------	-------	-------	-------	-------	-------	-------	-------	-------	-------	-------	-------	-------	-------	-------	-------	-------	-------	-------	-------	-------	-------	-------	-------	-------	-------	-------	-------	-------	-------	-------	-------	-------	-------	-------	-------	-------	-------