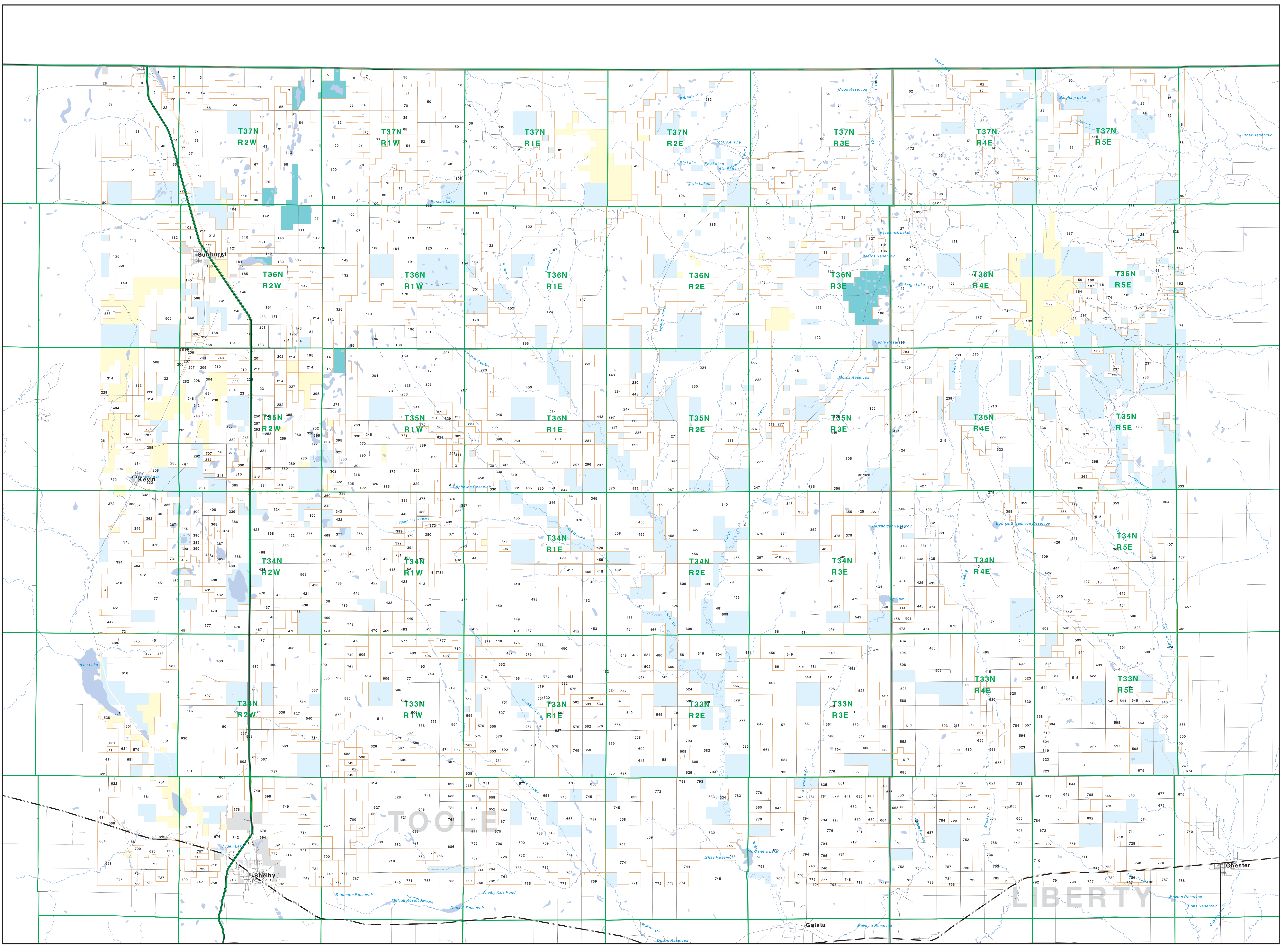


# Private Land Ownership Identification

## SWEET GRASS HILLS - (48111b)



**Legend**

- Private
- State Lands
- Forest Service
- Bureau of Land Management
- National Park Service
- Other Federal Land
- Fish and Wildlife Service
- Road
- Primitive Road
- River
- Stream/Creek
- Intermittent Creek
- Township
- County Border
- Lake/Reservoir
- Interstate Highway
- Secondary Highway
- Highway
- Fish Wildlife & Parks Wildlife Management Area

**NOTES**  
 Not all legal claims may appear on this map.  
 Private claims shown on this map do not represent public access to any lands.  
 The land status data displayed on this map may not be complete and may contain errors in boundary locations and/or coding.  
**DISCLAIMER:**  
 The Montana Heritage Program, MT State Library, MT Dept. of Administration and MT Dept. of Fish, Wildlife & Parks do not warrant or represent the accuracy or completeness of the data contained in these maps and assume no responsibility for the usability of these data for a particular purpose. These agencies, without liability for any damages incurred as a result of errors, hereby disclaims the ownership boundaries displayed on this map are not based on land survey data and are not a substitute for a land survey.  
 This map displays public and private land ownership information derived from various sources and continues to be corrected and updated.

**SOURCES / ACKNOWLEDGMENTS**  
 This map was produced as a joint effort between the MT Dept. of Fish, Wildlife, and Parks (FWP) and the Montana Natural Resource Information System (NRSIS) of the MT Dept. of Administration. In addition to Montana Code Annotated (MCA) and private entities, other data agencies, local governments, USGS BLM and private entities, provide the data used in this map. The FWP and NRSIS are grateful for the assistance and cooperation of all those who provided data and information to the State.  
 The public land data from the MT Natural Heritage Program land ownership data collection, which is the data that was originally digitized by the Bureau of Land Management (BLM) from 1:100,000 scale BLM District Management Status maps, were used for this map. The BLM District Management Status maps were developed by the BLM in cooperation with the Montana Department of Administration (DOA), the Montana Department of Fish, Wildlife & Parks (FWP), and the Montana Department of Transportation (MDT). The BLM District Management Status maps were developed by the BLM in cooperation with the Montana Department of Administration (DOA), the Montana Department of Fish, Wildlife & Parks (FWP), and the Montana Department of Transportation (MDT).  
 The private land data were developed for the Montana Cadastral Database Project. These data are provided through a cooperative effort between the Montana Department of Administration (DOA), the Montana Department of Fish, Wildlife & Parks (FWP), and the Montana Department of Transportation (MDT). The DOA provides the legal descriptions of the parcels, while the FWP and MDT provide the geographic information system (GIS) data. The DOA provides the legal descriptions of the parcels, while the FWP and MDT provide the geographic information system (GIS) data.  
 The base data for the public ownership data is 1:100,000 scale BLM District Management Status maps. The private ownership data is derived from 1:250,000 scale maps or survey data. The private ownership data is derived from 1:250,000 scale maps or survey data.  
 Map produced September 2007 with ownership data current as of August 2007.

**USGS 100,000 Scale Quadrangle Index**

|      |      |      |      |      |      |      |      |      |      |      |      |      |      |      |      |      |      |      |      |      |      |      |      |      |      |      |      |      |      |      |      |      |      |      |      |      |      |      |      |      |
|------|------|------|------|------|------|------|------|------|------|------|------|------|------|------|------|------|------|------|------|------|------|------|------|------|------|------|------|------|------|------|------|------|------|------|------|------|------|------|------|------|
| 8110 | 8111 | 8112 | 8113 | 8114 | 8115 | 8116 | 8117 | 8118 | 8119 | 8120 | 8121 | 8122 | 8123 | 8124 | 8125 | 8126 | 8127 | 8128 | 8129 | 8130 | 8131 | 8132 | 8133 | 8134 | 8135 | 8136 | 8137 | 8138 | 8139 | 8140 | 8141 | 8142 | 8143 | 8144 | 8145 | 8146 | 8147 | 8148 | 8149 | 8150 |
|------|------|------|------|------|------|------|------|------|------|------|------|------|------|------|------|------|------|------|------|------|------|------|------|------|------|------|------|------|------|------|------|------|------|------|------|------|------|------|------|------|

Scale of Miles: 0 1 2 3 4 5 6 7 8 9 10