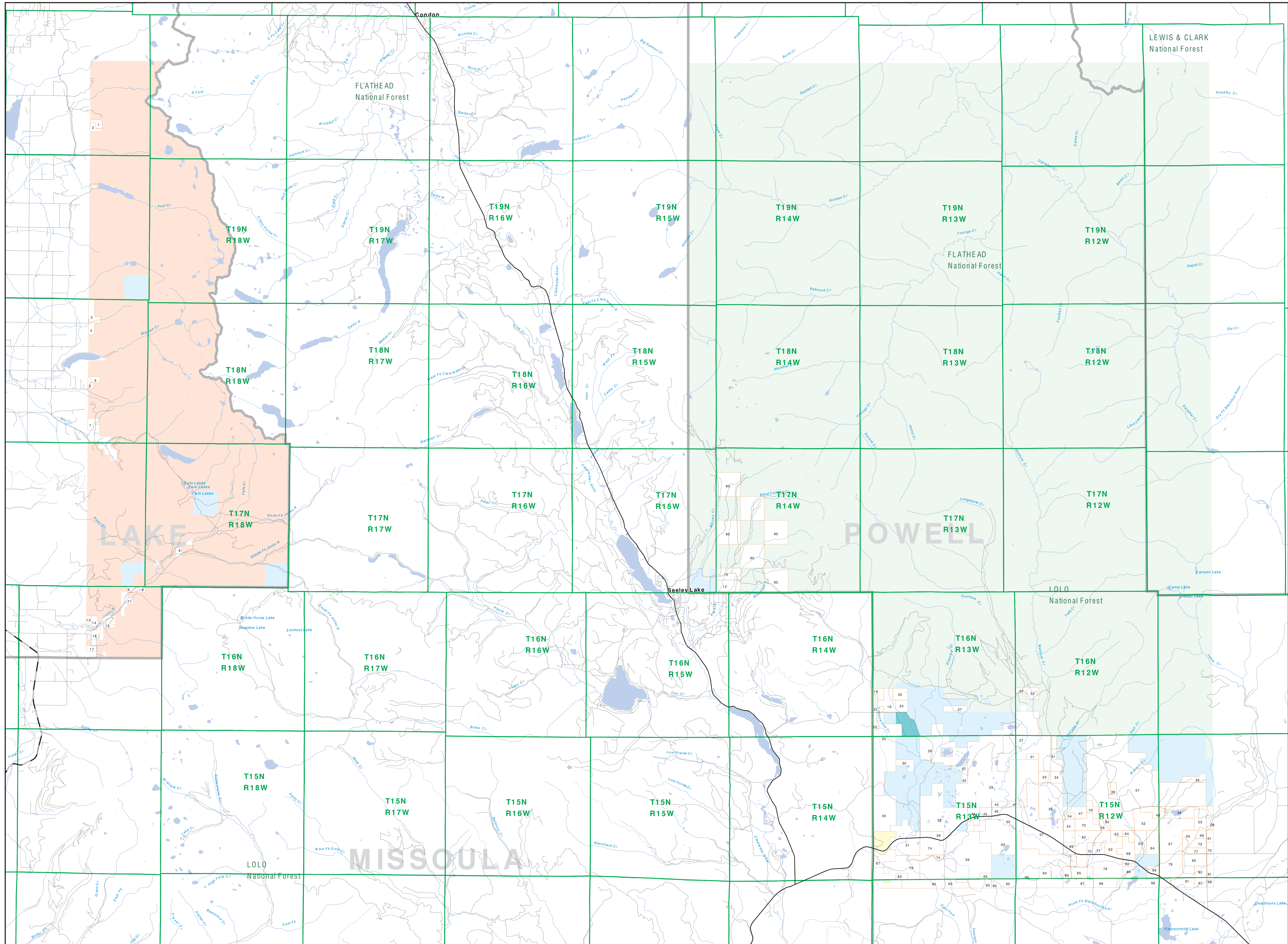


# Private Land Ownership Identification

## SEELEY LAKE - (47113a)

- 1 JOHN MERLE B FAYE E. 80
- 2 JOHN RICE WANCY 80
- 3 FRED C STEVENSON 194
- 4 BOB HENRY GLEN LOUISE M. 85
- 5 RONALD MICHAEL ANNAMARY 85
- 6 DONALD SALISH KOTERAKI THIBBS 85
- 7 BRADY WILCOX 166
- 8 KYLE D FRANKLIN LAYTON H. 45
- 9 WINDYBUSH TRUSTEE 115
- 10 DOLAN DAN JR. 311
- 11 WINDYBUSH TRUSTEE 115
- 12 CHRISTIE MANAGEMENT GROUP INC. 338
- 13 BRADY WILCOX 166
- 14 GILLIAM FARLEY MAXWELL ETAL 78
- 15 FIRE STONE HILLSBORO ADAMS 86
- 16 MARY ANN R TRUSTEE 97
- 17 HANSON CHARLES R. 74
- 18 NATURE CONSERVANCY INC. 116
- 19 JAMES DONALD L. 200
- 20 JAMES DONALD L. 199
- 21 BRADY WILCOX 166
- 22 JAMES DONALD L. 199
- 23 JAMES DONALD L. 199
- 24 JAMES DONALD L. 199
- 25 STEVE W MONTANA DONOR 1074
- 26 PITCHER AUGUST H. 111
- 27 TWO CREEK CO. 2433
- 28 SHAWLEY CREEK PROPERTIES LLC 181
- 29 AT PROPERTY GROUP PARTNERSHIP 400
- 30 CRANDALL SOPHIE E. DORIS 159
- 31 BUCHHEIM JAMES L ET AL. 235
- 32 UNIVERSITY OF MT SCHOOL OF FOR. 65
- 33 TWO CREEK MONTANA RANCH COMPANY 313
- 34 SHAW PATRICK S JR. 159
- 35 SHAW PATRICK S JR. 159
- 36 MONTANA DEPT OF FISH WILDLIFE 178
- 37 STONE JAMES R TRUSTEE 248
- 38 FOOTE GEOFFREY G. KATHIE A 944
- 39 JIMMIE STEVENSON 166
- 40 MT DEPT OF FISH WILDLIFE PAR. 959
- 41 BARBOUR THOMAS C. 103
- 42 BRADY WILCOX 166
- 43 BRADY WILCOX 166
- 44 FISCHER CAROL J. 271
- 45 BRADY WILCOX 166
- 46 ALLEN RALPH E. 218
- 47 ALLEN RALPH E. 218
- 48 POST HENRY W. 148
- 49 JOHN WOODROW W. DOROTHY 174
- 50 FRITZ M. LAURENCE 322
- 51 JAMES JOHN 488
- 52 AMBROSIO MORRIS TRUSTEE 300
- 53 MAC LACHLAN IAN D. 377
- 54 RICHARDSON SUSAN VIRGINIA 69
- 55 BRATISCHER GEORGE A. 82
- 56 NATURE CONSERVANCY 2028
- 57 JAMES JOHN 488
- 58 BRADY WILCOX 166
- 59 BRADY WILCOX 166
- 60 BRADY WILCOX 166
- 61 BRADY WILCOX 166
- 62 BRADY WILCOX 166
- 63 BRADY WILCOX 166
- 64 BRADY WILCOX 166
- 65 BRADY WILCOX 166
- 66 BRADY WILCOX 166
- 67 BRADY WILCOX 166
- 68 BRADY WILCOX 166
- 69 BRADY WILCOX 166
- 70 BRADY WILCOX 166
- 71 BRADY WILCOX 166
- 72 BRADY WILCOX 166
- 73 BRADY WILCOX 166
- 74 BRADY WILCOX 166
- 75 BRADY WILCOX 166
- 76 BRADY WILCOX 166
- 77 BRADY WILCOX 166
- 78 BRADY WILCOX 166
- 79 BRADY WILCOX 166
- 80 BRADY WILCOX 166
- 81 BRADY WILCOX 166
- 82 BRADY WILCOX 166
- 83 BRADY WILCOX 166
- 84 BRADY WILCOX 166
- 85 BRADY WILCOX 166
- 86 BRADY WILCOX 166
- 87 BRADY WILCOX 166
- 88 BRADY WILCOX 166
- 89 BRADY WILCOX 166
- 90 BRADY WILCOX 166
- 91 BRADY WILCOX 166
- 92 BRADY WILCOX 166
- 93 BRADY WILCOX 166
- 94 BRADY WILCOX 166
- 95 BRADY WILCOX 166
- 96 BRADY WILCOX 166
- 97 BRADY WILCOX 166
- 98 BRADY WILCOX 166
- 99 BRADY WILCOX 166
- 100 BRADY WILCOX 166



- Private
- Forest Service
- Bureau of Land Management
- National Park Service
- Other Federal Land
- Fish and Wildlife Service
- State Lands
- Local Govt
- Native American
- MFWP - WMA
- Lake/Reservoir
- Interstate
- Secondary Highway
- Highway
- Road
- Primitive Road
- River
- Stream/Creek
- Intermittent Creek
- Township
- County Border
- Fish Wildlife & Parks Wildlife Management Area

**NOTES:**  
 Not all legend items may appear on this map.  
 Features shown on this map do not imply public access to any lands.  
 The land status data displayed on this map may not be complete and may contain errors in boundary locations and/or coding.  
**DISCLAIMERS:**  
 The MT Natural Heritage Program, MT State Library, MT Dept of Administration and MT Dept of Revenue make no representations or warranties whatsoever with respect to the accuracy or completeness of the data contained in these maps and assumes no responsibility for the availability of these data for a particular purpose. These agencies will not be liable for any damages incurred as a result of errors displayed here.  
 The ownership boundaries displayed on this map are not based on land survey data and are not a substitute for property surveys.  
 This map displays public and private land ownership derived from several sources and continues to be corrected and updated.

**SOURCES / ACKNOWLEDGEMENTS**  
 This map was produced as a joint effort between the MT Dept of Fish, Wildlife and Parks (FWP) and the Montana Natural Resource Information System (NRIS) of the MT State Library, in response to Montana Code Annotated 87-3-308, which directs the FWP to "...work cooperatively with all state and federal land management agencies...to develop accurate land ownership maps...in the State".  
 The public land data is from the MT Natural Heritage Program land ownership data collection. Much of this data was originally digitized by the Bureau of Land Management (BLM) from 1:100,000 scale BLM Surface Management Status maps. Additional information, corrections and updates (especially for state trust lands, Montana Fish, Wildlife & Parks areas, US Fish & Wildlife Service areas, and conservation easements). These data are based on data supplied by the various public agencies and land trusts, and have not been verified against county or Montana Department of Revenue records.

The private land data were developed for the Montana Cadastral Database Project. These data are provided through a cooperative agreement between the Montana Department of Administration (DOA), the Montana Department of Revenue (DOR), other state agencies, local governments, USDOI (BLM) and private enterprise.  
 Lands depicted on this map represent single ownership of contiguous parcels that are at least 40 acres in size. The DOA maintains the GIS cadastral layer and the DOR maintains the private ownership information.  
 The base scale for the public ownership data is 1:100,000, though many of the recent BLM topographic data digitized from 1:24,000 scale maps of survey data. Private ownership data is accurate to scale of 1:24,000 or smaller.  
 Map produced September 2007 with ownership data current as of August 2007.

