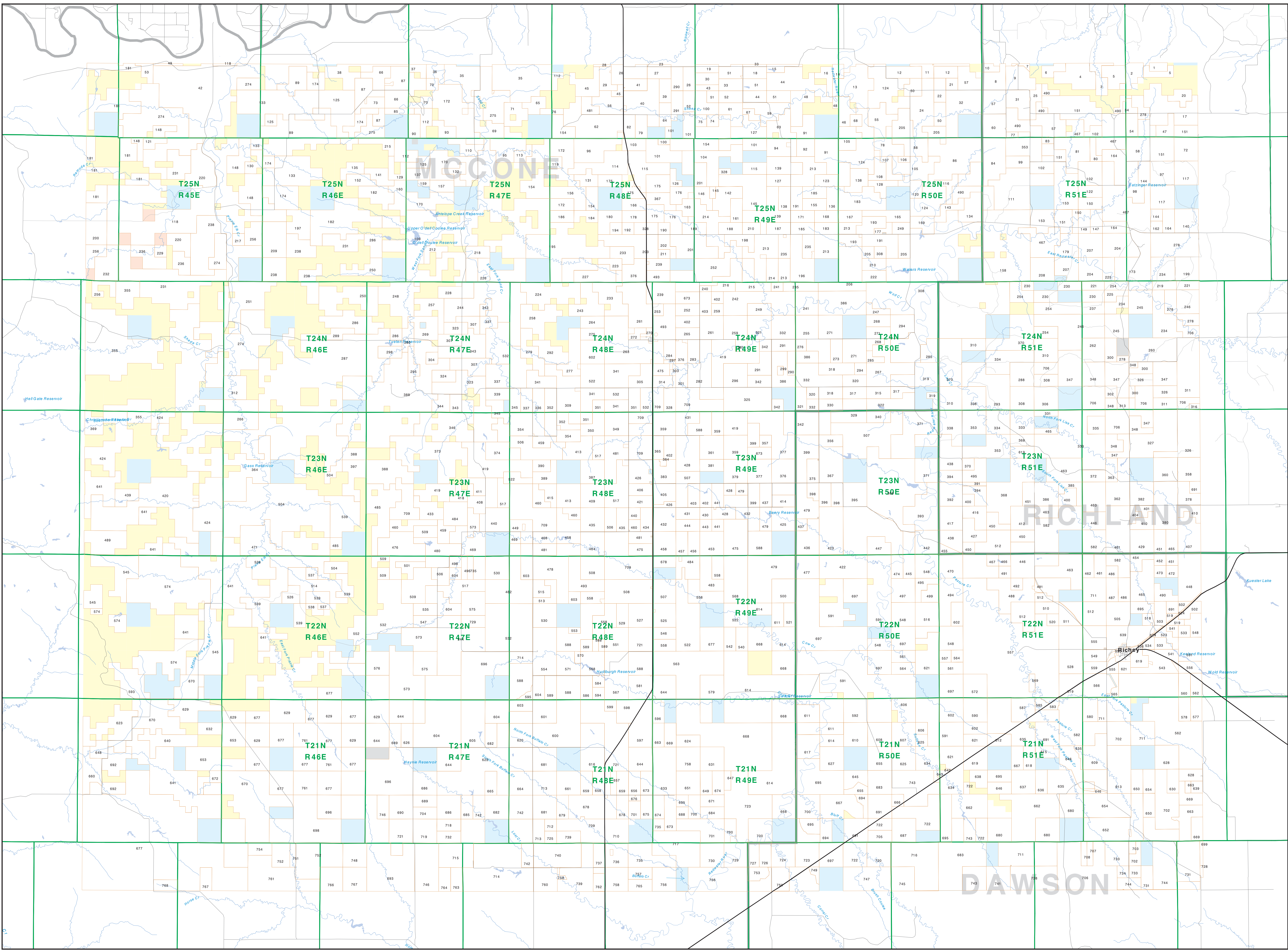


Private Land Ownership Identification RICHEY - (47105b)



Legend for land ownership types (Private, Forest Service, Bureau of Land Management, National Park Service, Other Federal Land, Fish and Wildlife Service) and other features (Road, River, Stream/Creek, Intermittent Creek, Township, County Border, Interstate, Secondary Highway, Highway).

NOTES: Not all legend items may appear on this map. Private owners on this map do not imply public access to any lands. The land status data displayed on this map may not be complete and may contain errors in boundary locations and/or zoning. DISCLAIMER: This is a Natural Heritage Program, MT Dept. of Fish, Wildlife & Parks. It is not a survey or a warranty of accuracy or completeness of the data contained in these maps and assumes no responsibility for its use. The ownership boundaries displayed on this map are not based on land survey data but are based on the best available information. This map displays public and private land ownership information derived from several sources and continues to be completed and updated.

SOURCES/ACKNOWLEDGMENTS: This map was produced by a joint venture between the MT Dept. of Fish, Wildlife, and Parks (DFWP) and the Montana Natural Resource Information System (MNRIS) of the Montana Department of Natural Resources and Conservation (DNRC). The private land data were developed for the Montana Cadastral Database Project. The base map for this project is the 1:50,000 scale BLM Surface Management Data maps. The ownership boundaries displayed on this map are not based on land survey data but are based on the best available information. This map displays public and private land ownership information derived from several sources and continues to be completed and updated.

Table listing parcel numbers, owner names, and total acres for the Richey area. The table is organized in columns corresponding to the township and range grid on the map.