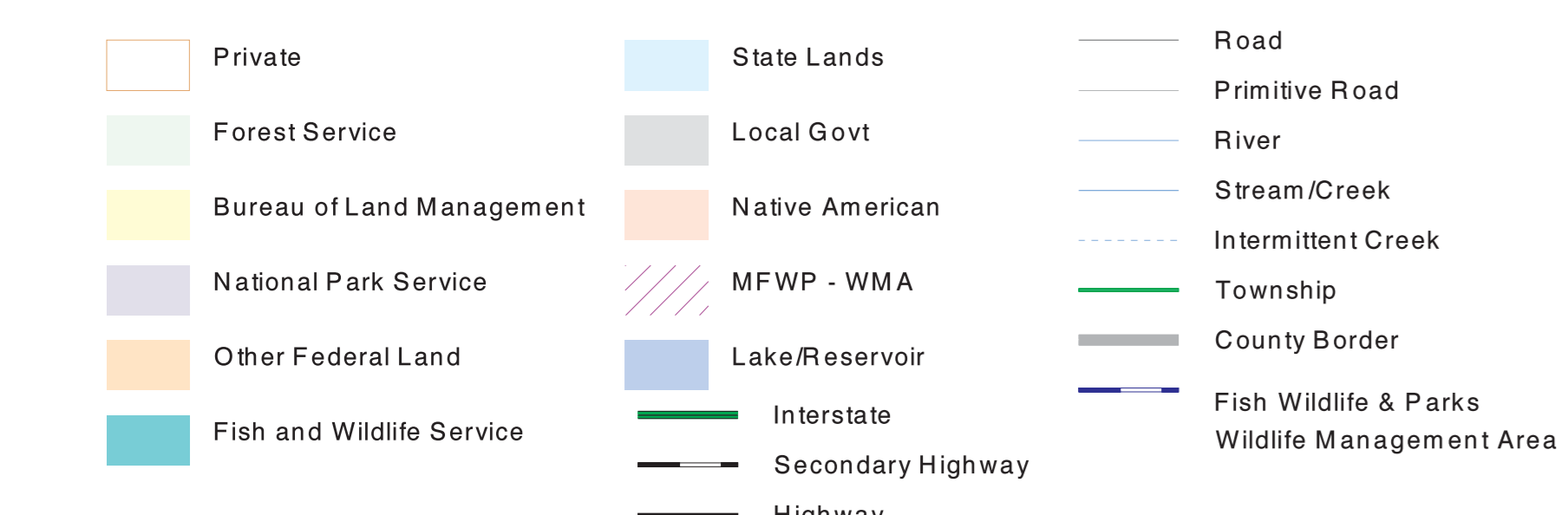
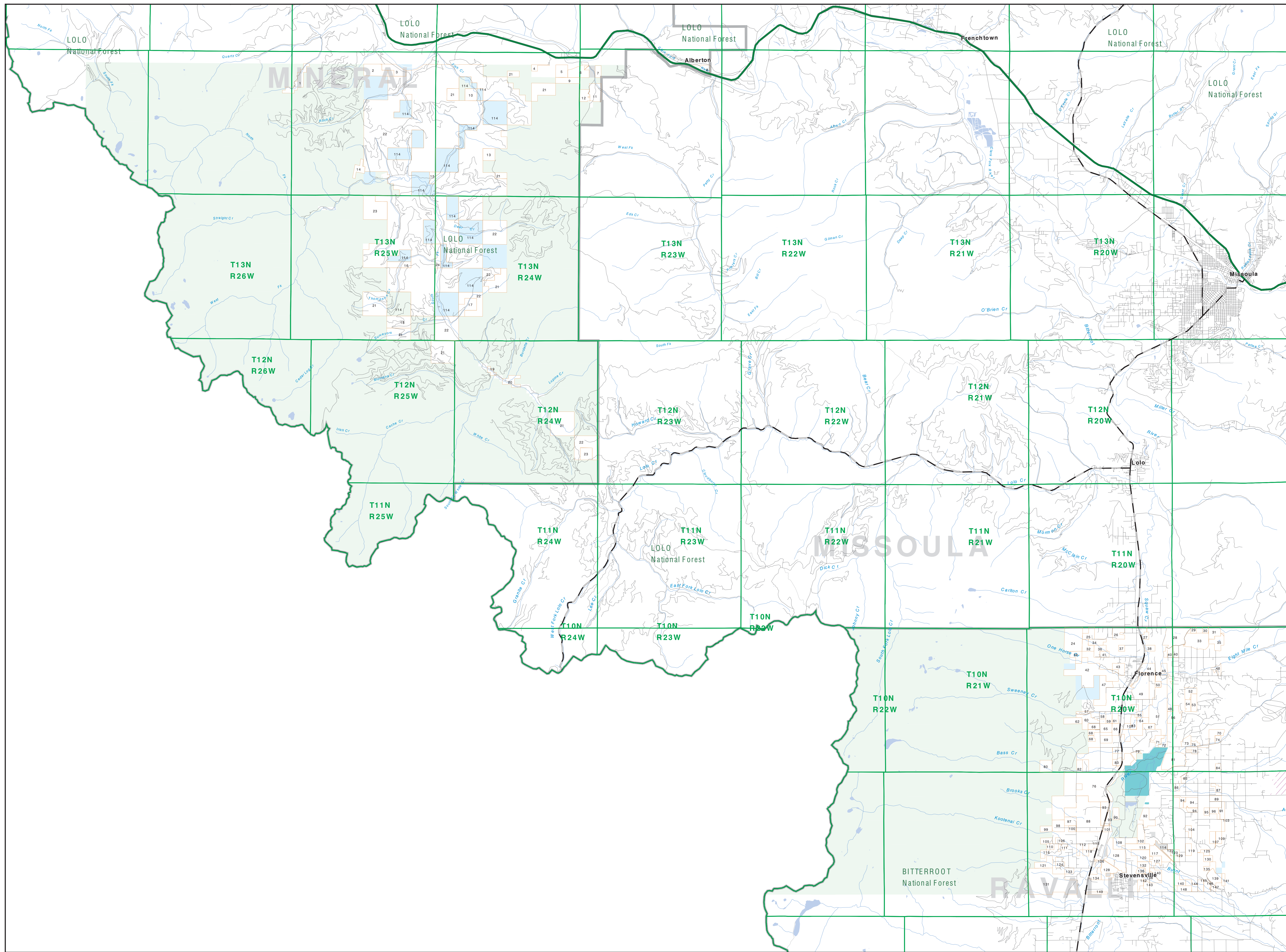


# Private Land Ownership Identification MISSOULA WEST - (46114b)

- 1 CASTLE THOMAS R GLENN S 246
- 2 PLUM CREEK LIMITED COMPANY L P 277
- 3 STEVENSON COMPANY 291
- 4 WILSON TRAIL PARTNERS 49
- 5 YOUNG CAPITAL 116
- 6 BEZEL LLP 236
- 7 FORTUNE PROPERTY M 80
- 8 LITTLE FAMILY LIMITED PARTNE 115
- 9 YOUNG CAPITAL JAMES 100
- 10 YOUNG CAPITAL JAMES 100
- 11 YOUNG CAPITAL JAMES 100
- 12 PAUL ROMAN J AND TERRY L 127
- 13 DENNY HARRY F AND TERRY A 160
- 14 KIRCH FAMILY TRUST 120
- 15 BARCELOTTI DAN AND KYLE 80
- 16 PLUM CREEK TRAIL COMPANY P 322
- 17 WILKINSON GEORGE W 241
- 18 PLUM CREEK TRAIL COMPANY P 322
- 19 MEYER SCOTT T SHARLO JOSEPH 49
- 20 MEYER SCOTT T SHARLO JOSEPH 49
- 21 PLUM CREEK TRAIL CO 320
- 22 PLUM CREEK TRAIL COMPANY L P 271
- 23 PLUM CREEK TRAIL COMPANY L P 271
- 24 ASHBY PERRY KATHLENE 120
- 25 GUST AVENUE HOLDINGS LLC 191
- 26 HENDERICKSEN STANLEY C 51
- 27 HENDERICKSEN STANLEY C 51
- 28 MCINTOSH JAMES E ROBAWA F 448
- 29 STICK JOHN W ANDREW 41
- 30 HAHN JASON L 42
- 31 S R ANDERSON LLC 154
- 32 CARLSON KAREN V L AND J 119
- 33 WENGER RUSSELL C COMPANY 303
- 34 CARLSON CLINTON E SALLY L 110
- 35 CARLSON CLINTON E SALLY L 110
- 36 PROR STAR BUT TRUSTEE 122
- 37 SCHLEIFER WILLIAM R GUE 14
- 38 HALL EUGENE J ALLEN F 68
- 39 SCHLEIFER WILLIAM R GUE 14
- 40 FRICKE CHARLES AUGUST LAURA 161
- 41 PROR BUT TRUSTEE 122
- 42 TRANE ROBERT F TRUSTEE AND 785
- 43 WILLIAMS BARBARA 171
- 44 WARDNER LAWREN W DONALD AND 68
- 45 DOWNS LEE O LINDA J 79
- 46 FLORES JOHN F KAREN AND 45
- 47 FLORES JOHN F KAREN 291
- 48 WARDNER HENRY A MARGARET MA 278
- 49 MARTIN RICHARD E 409
- 50 WARDNER HENRY A MARGARET MA 278
- 51 KELLEN DONALD J DONNA TR 871
- 52 WARDNER HENRY A MARGARET MA 278
- 53 SPRINGER JACQUELYN ANTONIM 118
- 54 ARTHUR ERIC JOHN 78
- 55 MELTZER BRUCE J CHRISTY W 80
- 56 WOODGERO DAVID WESLEY MARK A 217
- 57 SCHLEIFER WILLIAM R GUE 14
- 58 JOHNSON GORDON R 57
- 59 JOHNSON GORDON R 57
- 60 HAYEL L RICHARD AND D TRUS 303
- 61 BRONKHORST J 87
- 62 WEST FORK INVESTMENTS LLC 153
- 63 BRONKHORST J 87
- 64 BRONKHORST J 87
- 65 BRONKHORST J 87
- 66 BRONKHORST J 87
- 67 BRONKHORST J 87
- 68 BRONKHORST J 87
- 69 BRONKHORST J 87
- 70 BRONKHORST J 87
- 71 BRONKHORST J 87
- 72 BRONKHORST J 87
- 73 BRONKHORST J 87
- 74 BRONKHORST J 87
- 75 BRONKHORST J 87
- 76 BRONKHORST J 87
- 77 BRONKHORST J 87
- 78 BRONKHORST J 87
- 79 BRONKHORST J 87
- 80 BRONKHORST J 87
- 81 BRONKHORST J 87
- 82 BRONKHORST J 87
- 83 BRONKHORST J 87
- 84 BRONKHORST J 87
- 85 BRONKHORST J 87
- 86 BRONKHORST J 87
- 87 BRONKHORST J 87
- 88 BRONKHORST J 87
- 89 BRONKHORST J 87
- 90 BRONKHORST J 87
- 91 BRONKHORST J 87
- 92 BRONKHORST J 87
- 93 BRONKHORST J 87
- 94 BRONKHORST J 87
- 95 BRONKHORST J 87
- 96 BRONKHORST J 87
- 97 BRONKHORST J 87
- 98 BRONKHORST J 87
- 99 BRONKHORST J 87
- 100 BRONKHORST J 87



**NOTES:**  
Not all land parcels are shown on this map.  
Features shown on this map do not imply public access to any lands.  
The land data data displayed on this map may not be complete and may contain errors in boundary locations and/or coding.  
**DISCLAIMER:**  
The Montana Heritage Program, MT State Library, MT Dept. of Administration and MT Dept. of Revenue make no representations or warranties whatsoever with respect to the accuracy or completeness of the data contained in these maps and assumes no responsibility for the suitability of these data for a particular purpose. These agencies will not be liable for any damages incurred as a result of errors displayed here.  
The ownership boundaries displayed on this map are not based on land survey data and are not a substitute for property surveys.  
This map displays public and private land ownership information derived from several sources and continues to be corrected and updated.

**SOURCES / ACKNOWLEDGEMENTS**  
This map was produced as a joint effort between the MT Dept. of Fish, Wildlife, and Parks (FWP) and the Montana Natural Resource Information System (NRIS) of the MT State Library, in response to Montana Code Annotated §7-5-206, which directs the FWP to "...work cooperatively with all state and federal land management agencies...to develop accurate land ownership maps..." in the State.  
The public land data is from the MT Natural Heritage Program land ownership data collection. Much of this data was originally digitized by the Bureau of Land Management (BLM) from 1:100,000 scale BLM Surface Management Status maps. Additional information, corrections and updates (especially for state lands and private lands) were added by the University of Montana, Wildlife Spatial Analysis Unit, during 1998-1998. Since 1998, the Montana Natural Heritage Program has made numerous updates and corrections (especially for state trust lands, Montana Fish, Wildlife & Parks areas, US Fish & Wildlife Service areas, and conservation easements). These edits are based on data supplied by the various public agencies and land trusts, and have not been verified against county or Montana Department of Revenue records.

The private land data were developed for the Montana Cadastral Database Project. These data are provided through a cooperative effort between the Montana Department of Administration (DOA), the Montana Department of Revenue (DOR), other state agencies, local governments, USDA/BLM and private enterprise. Lands depicted on this map represent single ownership of contiguous parcels that are at least 40 acres in size. The DOA maintains the GIS cadastral layer and the DOR maintains the private ownership information.  
The base scale for the public ownership data is 1:100,000, though many of the recent wide coverage maps digitized from 1:24,000 scale maps or survey data. Private ownership data is accurate to scales of 1:24,000 or smaller.  
Map produced September 2007 with ownership data current as of August 2007.

**USGS 100,000 Scale Quadrangle Index**

461100	461110	461120	461130	461140	461150	461160	461170	461180	461190
461150	461160	461170	461180	461190	461200	461210	461220	461230	461240
461200	461210	461220	461230	461240	461250	461260	461270	461280	461290
461250	461260	461270	461280	461290	461300	461310	461320	461330	461340
461300	461310	461320	461330	461340	461350	461360	461370	461380	461390
461350	461360	461370	461380	461390	461400	461410	461420	461430	461440
461400	461410	461420	461430	461440	461450	461460	461470	461480	461490