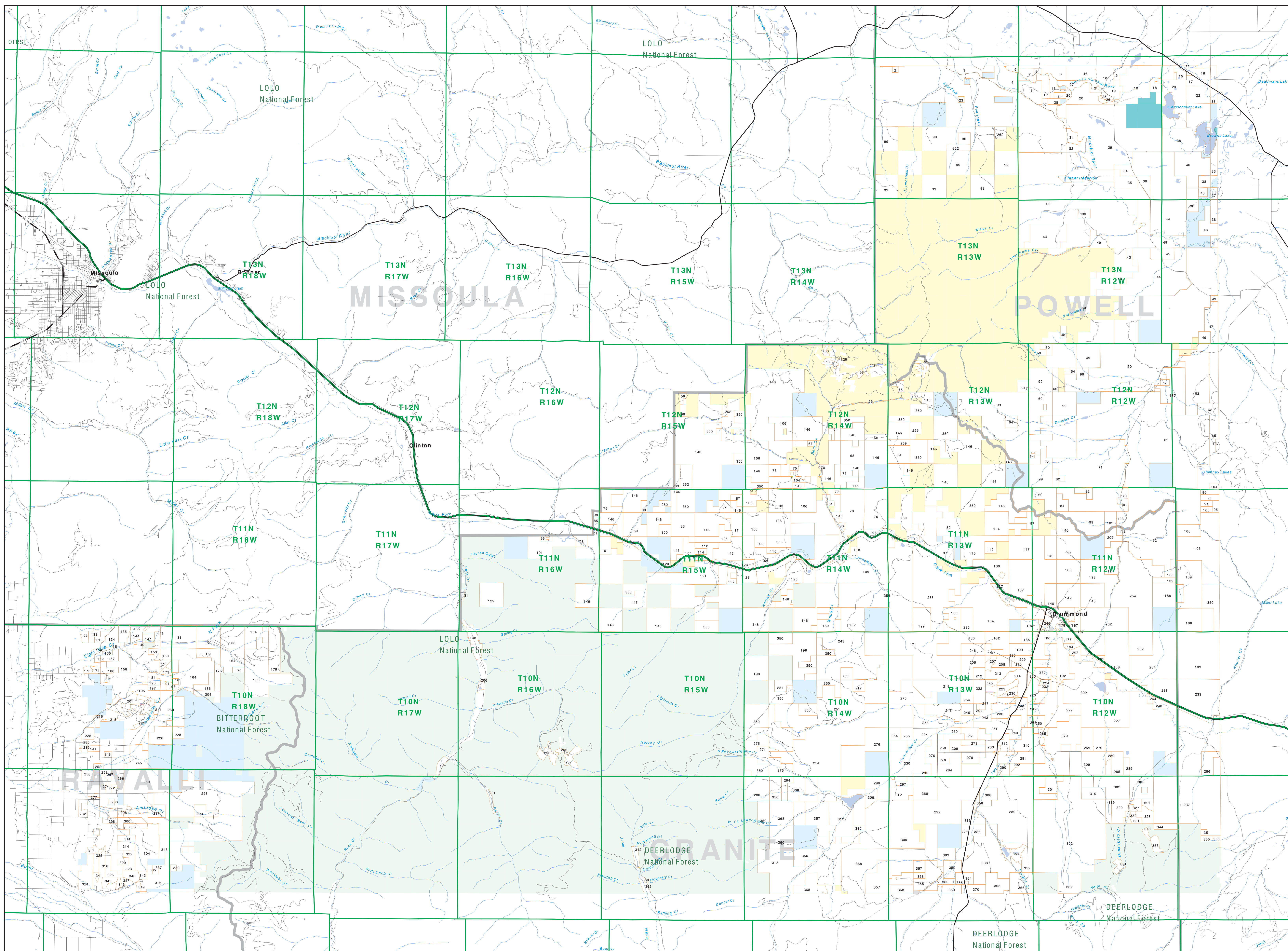


Private Land Ownership Identification

MISSOULA EAST - (46113b)



1	PLUM CREEK TRIM COMPANY LP 1075	1531	CELANO LAKE RANCH INC 5779
2	ANDSON ROBERTS 47	1532	WINDY HOLLOW 631
3	SARGE INC 333	1533	TRINITY WILLIAM H 291
4	WISSEBROEK TRIMMERS LYNAM TRU 144	1534	WISSEBROEK TRIMMERS LYNAM TRU 144
5	CANDRADO SHIMRIDGE ENCLAND 74	1535	MELISSA LAWRENCE 181
6	BLACKFOOT FIVE RANCH COMPANY 218	1536	BLACKFOOT FIVE RANCH COMPANY 218
7	PROOF OF LAND PROPERTY LLC 103	1537	DOUGLAS ROSS & LORENA E 235
8	JACKSON ROBERT 71	1538	ANDREW JACOBSON 224
9	WILLIAMS LAMAR TRUSTEE 105	1539	LINDA FRANCES ALPHA 1008
10	JACOBSON ROBERT 71	1540	WILLIAM WILLY FARMY WILLY FARM 1538
11	WISSEBROEK TRIMMERS LYNAM TRU 144	1541	WISSEBROEK TRIMMERS LYNAM TRU 144
12	WISSEBROEK TRIMMERS LYNAM TRU 144	1542	MALVA FRANCES A 824
13	KOFFER, ARLINE V PREVOL 113	1543	ANDREW ROBERT B 230
14	HARD ALLEN 129	1544	WILLIAM MARIANNE D TRUSTEE 129
15	TALAN INC 289	1545	WENTZER GARRY A 238
16	WISSEBROEK TRIMMERS LYNAM TRU 144	1546	PRICE DAVID J & JAVO D TRUSTEE 84
17	LE TEE LLC 722	1547	HALLS TRUSTEE 204
18	ANDREW JACOBSON 224	1548	HENDERSON J R 305
19	LE TEE LLC 722	1549	WISSEBROEK TRIMMERS LYNAM TRU 144
20	ANDREW JACOBSON 224	1550	ANDREW JACOBSON 224
21	BLACKFOOT FIVE RANCH COMPANY 218	1551	BLACKFOOT FIVE RANCH COMPANY 218
22	BLACKFOOT FIVE RANCH COMPANY 218	1552	BLACKFOOT FIVE RANCH COMPANY 218
23	ANDREW JACOBSON 224	1553	ANDREW JACOBSON 224
24	ANDREW JACOBSON 224	1554	ANDREW JACOBSON 224
25	ANDREW JACOBSON 224	1555	ANDREW JACOBSON 224
26	ANDREW JACOBSON 224	1556	ANDREW JACOBSON 224
27	ANDREW JACOBSON 224	1557	ANDREW JACOBSON 224
28	ANDREW JACOBSON 224	1558	ANDREW JACOBSON 224
29	ANDREW JACOBSON 224	1559	ANDREW JACOBSON 224
30	ANDREW JACOBSON 224	1560	ANDREW JACOBSON 224
31	ANDREW JACOBSON 224	1561	ANDREW JACOBSON 224
32	ANDREW JACOBSON 224	1562	ANDREW JACOBSON 224
33	ANDREW JACOBSON 224	1563	ANDREW JACOBSON 224
34	ANDREW JACOBSON 224	1564	ANDREW JACOBSON 224
35	ANDREW JACOBSON 224	1565	ANDREW JACOBSON 224
36	ANDREW JACOBSON 224	1566	ANDREW JACOBSON 224
37	ANDREW JACOBSON 224	1567	ANDREW JACOBSON 224
38	ANDREW JACOBSON 224	1568	ANDREW JACOBSON 224
39	ANDREW JACOBSON 224	1569	ANDREW JACOBSON 224
40	ANDREW JACOBSON 224	1570	ANDREW JACOBSON 224
41	ANDREW JACOBSON 224	1571	ANDREW JACOBSON 224
42	ANDREW JACOBSON 224	1572	ANDREW JACOBSON 224
43	ANDREW JACOBSON 224	1573	ANDREW JACOBSON 224
44	ANDREW JACOBSON 224	1574	ANDREW JACOBSON 224
45	ANDREW JACOBSON 224	1575	ANDREW JACOBSON 224
46	ANDREW JACOBSON 224	1576	ANDREW JACOBSON 224
47	ANDREW JACOBSON 224	1577	ANDREW JACOBSON 224
48	ANDREW JACOBSON 224	1578	ANDREW JACOBSON 224
49	ANDREW JACOBSON 224	1579	ANDREW JACOBSON 224
50	ANDREW JACOBSON 224	1580	ANDREW JACOBSON 224
51	ANDREW JACOBSON 224	1581	ANDREW JACOBSON 224
52	ANDREW JACOBSON 224	1582	ANDREW JACOBSON 224
53	ANDREW JACOBSON 224	1583	ANDREW JACOBSON 224
54	ANDREW JACOBSON 224	1584	ANDREW JACOBSON 224
55	ANDREW JACOBSON 224	1585	ANDREW JACOBSON 224
56	ANDREW JACOBSON 224	1586	ANDREW JACOBSON 224
57	ANDREW JACOBSON 224	1587	ANDREW JACOBSON 224
58	ANDREW JACOBSON 224	1588	ANDREW JACOBSON 224
59	ANDREW JACOBSON 224	1589	ANDREW JACOBSON 224
60	ANDREW JACOBSON 224	1590	ANDREW JACOBSON 224
61	ANDREW JACOBSON 224	1591	ANDREW JACOBSON 224
62	ANDREW JACOBSON 224	1592	ANDREW JACOBSON 224
63	ANDREW JACOBSON 224	1593	ANDREW JACOBSON 224
64	ANDREW JACOBSON 224	1594	ANDREW JACOBSON 224
65	ANDREW JACOBSON 224	1595	ANDREW JACOBSON 224
66	ANDREW JACOBSON 224	1596	ANDREW JACOBSON 224
67	ANDREW JACOBSON 224	1597	ANDREW JACOBSON 224
68	ANDREW JACOBSON 224	1598	ANDREW JACOBSON 224
69	ANDREW JACOBSON 224	1599	ANDREW JACOBSON 224
70	ANDREW JACOBSON 224	1600	ANDREW JACOBSON 224

Legend

- Private
- State Lands
- Forest Service
- Bureau of Land Management
- National Park Service
- Other Federal Land
- Fish and Wildlife Service
- Road
- Primitive Road
- River
- Stream/Creek
- Intermittent Creek
- Township
- County Border
- Fish Wildlife & Parks Wildlife Management Area
- Interstate
- Secondary Highway
- Highway

NOTES:
 Not all legend items may appear on this map.
 Features shown on this map do not imply public access to any lands.
 The land status data displayed on this map may not be complete and may contain errors in boundary locations and/or coding.
DISCLAIMERS:
 The MT Natural Heritage Program, MT State Library, MT Dept of Administration and MT Dept of Revenue make no representation or warranties whatsoever with respect to the accuracy or completeness of the data contained in these maps and assumes no responsibility for the suitability of these data for a particular purpose. These agencies will not be liable for any damages incurred as a result of errors displayed here.
 The ownership boundaries displayed on this map are not based on land survey data and are not a substitute for property surveys.
 This map displays public and private land ownership information derived from several sources and continues to be corrected and updated.

SOURCES/ACKNOWLEDGEMENTS

This map was produced as a joint effort between the MT Dept of Fish, Wildlife, and Parks (FWP) and the Montana Natural Resource Information System (NRIS) of the MT State Library, in response to Montana Code Annotated 87-9-208, which directs the FWP to "work cooperatively with all state and federal land management agencies... to develop accurate land ownership maps... in the State".

The public land data is from the MT Natural Heritage Program land stewardship data collection. Much of the data was originally digitized by the Bureau of Land Management (BLM) from 1:100,000 scale BLM Surface Management Status maps. Additional information, corrections and updates (especially for riparian lands and riparian lands) were added by the University of Montana, Wildlife Heritage Analysis Unit, during 1998-1999. Since 1999, the Montana Natural Heritage Program has made numerous updates and corrections (especially for state trust lands, Montana Fish, Wildlife & Parks areas, US Fish & Wildlife Service areas, and conservation easements). These data are based on data supplied by the various public agencies and land trusts, and have not been verified against county or Montana Department of Revenue records.

The private land data were developed for the Montana Cadastral Database Project. These data are provided through a cooperative effort between the Montana Department of Administration (ODA), the Montana Department of Revenue (DOR), other state agencies, local governments, USDOI BLM and private enterprise. Lands disclosed on this map represent large ownership or contiguous parcels that are at least 60 acres in size. The ODA maintains the GIS cadastral layer and the DOR maintains the private ownership information.

The base scale for the public ownership data is 1:100,000, though many of the recent data incorporate data digitized from 1:24,000 scale maps or survey data. Private ownership data is accurate to a scale of 1:24,000 or smaller.

Map produced September 2007 with ownership data current as of August 2007.

Scale of Miles

USGS 100,000 Scale Quadrangle Index

81160	481150	481140	481130	481120	481110	481100	481090	481080	481070	481060	481050	481040
1160	481150	481140	481130	481120	481110	481100	481090	481080	481070	481060	481050	481040
10	481150	481140	481130	481120	481110	481100	481090	481080	481070	481060	481050	481040
110	481150	481140	481130	481120	481110	481100	481090	481080	481070	481060	481050	481040
210	481150	481140	481130	481120	481110	481100	481090	481080	481070	481060	481050	481040
310	481150	481140	481130	481120	481110	481100	481090	481080	481070	481060	481050	481040
410	481150	481140	481130	481120	481110	481100	481090	481080	481070	481060	481050	481040
510	481150	481140	481130	481120	481110	481100	481090	481080	481070	481060	481050	481040
610	481150	481140	481130	481120	481110	481100	481090	481080	481070	481060	481050	481040
710	481150	481140	481130	481120	481110	481100	481090	481080	481070	481060	481050	481040
810	481150	481140	481130	481120	481110	481100	481090	481080	481070	481060	481050	481040
910	481150	481140	481130	481120	481110	481100	481090	481080	481070	481060	481050	481040
010	481150	481140	481130	481120	481110	481100	481090	481080	481070	481060	481050	481040