

Private Land Ownership Identification MILES CITY - (46105a)

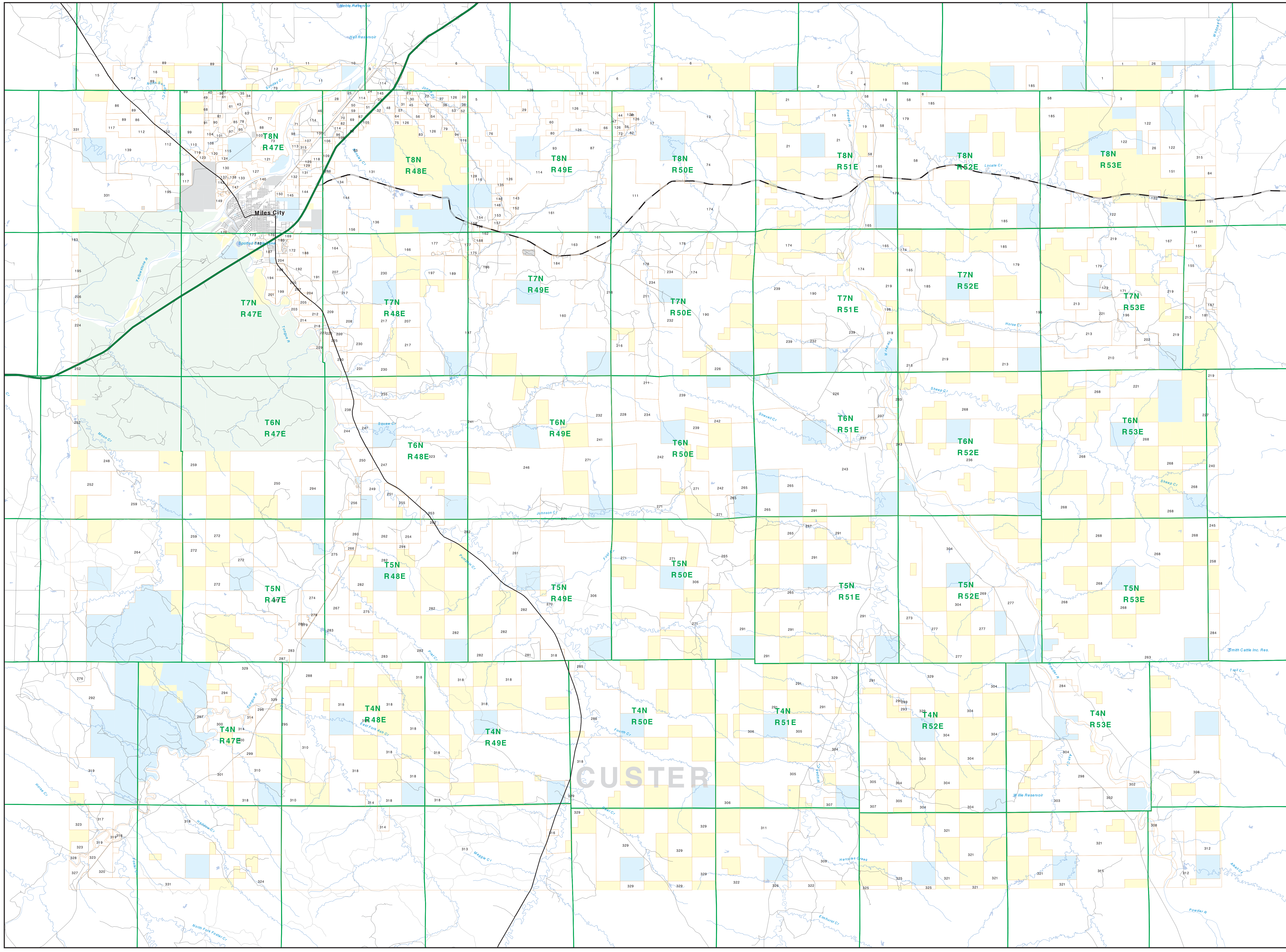


Table with 3 columns: Parcel Num, Owner Name, Total Acres. Lists numerous land parcels and their owners.

Legend for land ownership types: Private, State Lands, Forest Service, Bureau of Land Management, National Park Service, Other Federal Land, Fish and Wildlife Service, Road, Primitive Road, River, Stream/Creek, Intermittent Creek, Township, County Border, Fish Wildlife & Parks Wildlife Management Area, Interstate, Secondary Highway, Highway.

NOTES: Not all legend items may appear on this map. Private lands shown on this map do not include public access to any lands. The land status data displayed on this map may not be complete and may contain errors in boundary locations and/or coding. DISCLAIMERS: The MT Natural Heritage Program, MT State Library, MT Dept of Administration and MT Dept of Revenue make no warranty or representation with respect to the accuracy or completeness of the data contained on this map and assumes no responsibility for the suitability of these data for a particular purpose. These agencies will not be liable for any damages incurred as a result of errors displayed here. The ownership boundaries displayed on this map are not based on land survey data and are not a substitute for property surveys. This map displays public and private land ownership information derived from several sources and continues to be corrected and updated.

SOURCES / ACKNOWLEDGEMENTS: This map was produced as a joint effort between the MT Dept. of Fish, Wildlife, and Parks (FWP) and the Montana Natural Resource Information System (NRIS) of the MT State Library. In response to Montana Code Annotated 87-3-308, which directs the FWP to work cooperatively with all state and federal land management agencies, to develop accurate land ownership maps. In the State, the public land data is from the MT Natural Heritage Program land stewardship data collection. Much of this data was originally digitized by the Bureau of Land Management (BLM) from 1:100,000 scale BLM Surface Management Status maps. Additional information, corrections and updates (especially for BLM lands and private lands) were added by the University of Montana, Wildlife Spatial Analysis Unit, during 1998-1999. Since 1998, the Montana Natural Heritage Program has made numerous updates and corrections (especially for state trust lands, Montana Fish, Wildlife & Parks areas, US Fish & Wildlife Service areas, and conservation easements). These data are based on data supplied by the various public agencies and land trusts, and have not been verified against county of Montana Department of Revenue records.

USGS 100,000 Scale Quadrangle Index table with columns for Easting (8100-8410) and Northing (46100-46400) coordinates.