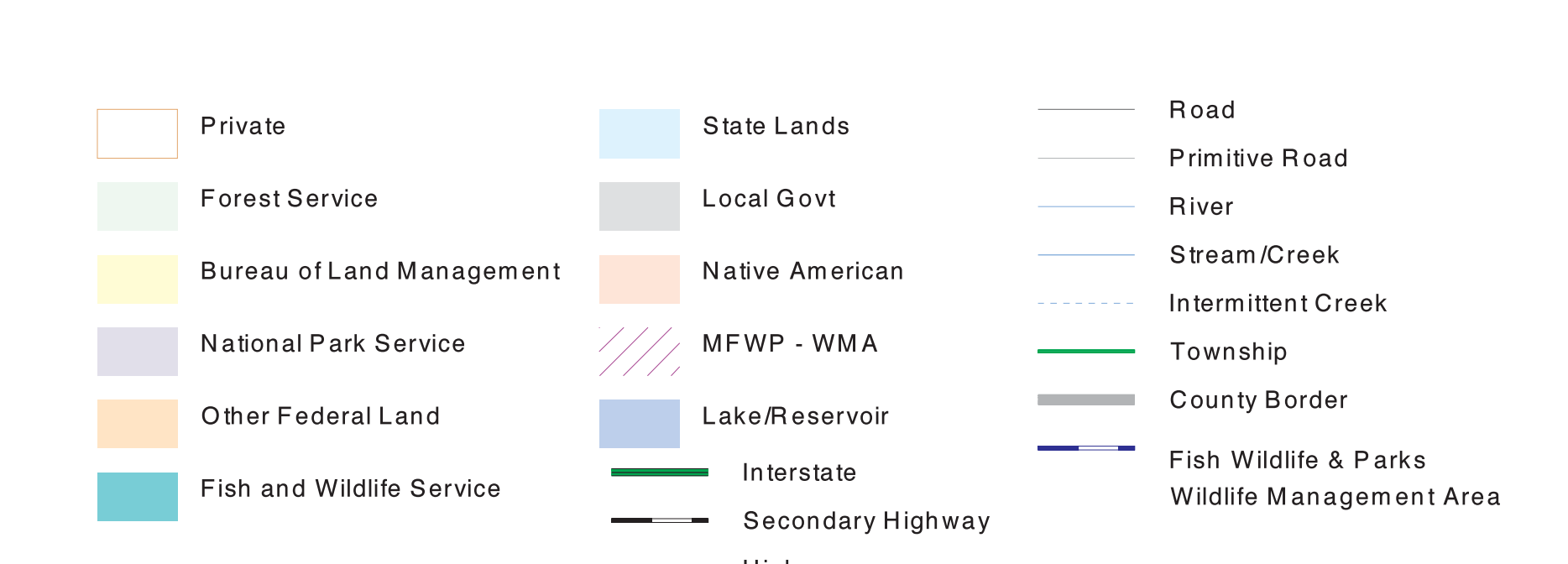
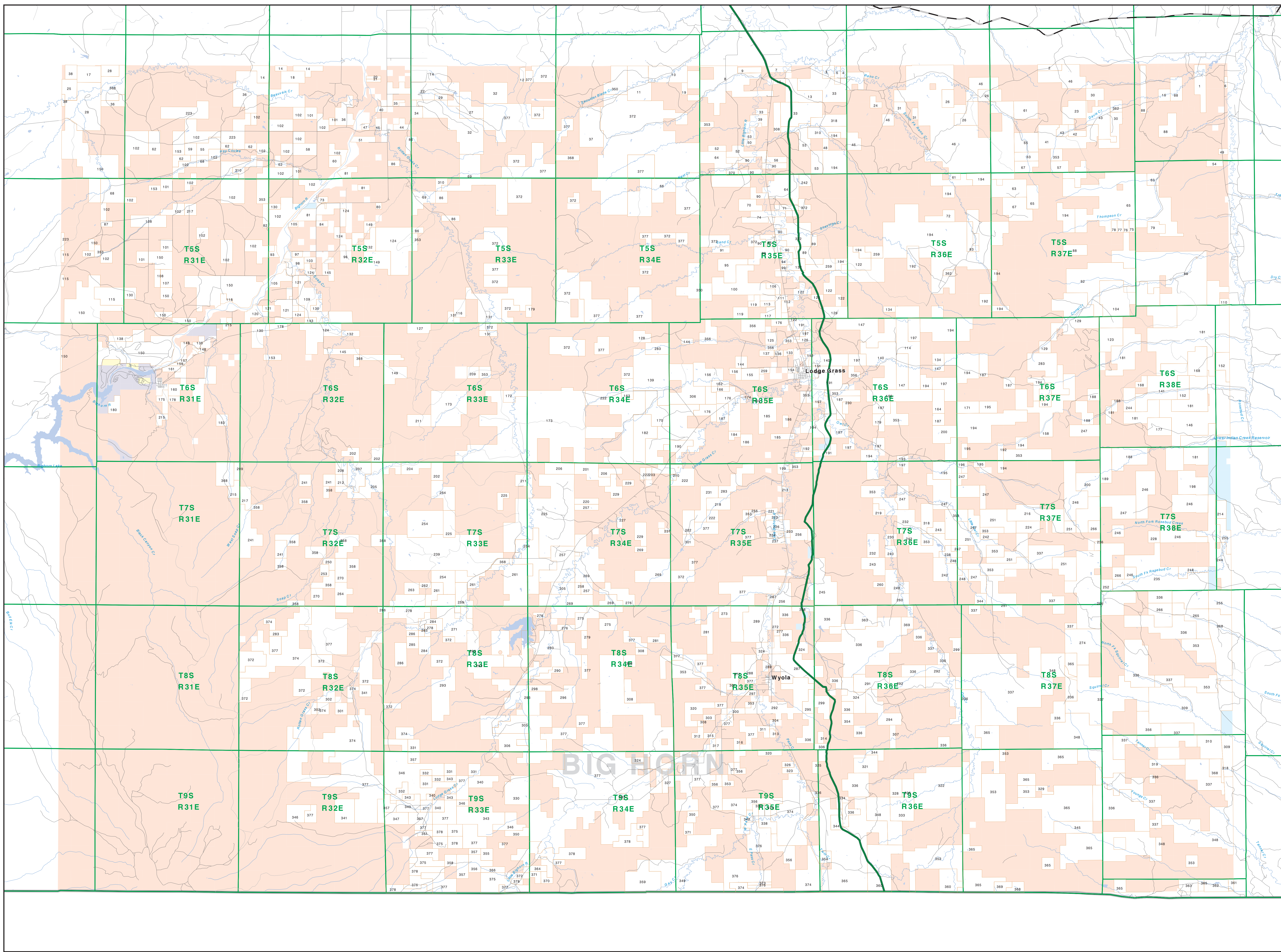


# Private Land Ownership Identification

## LODGE GRASS - (45107a)

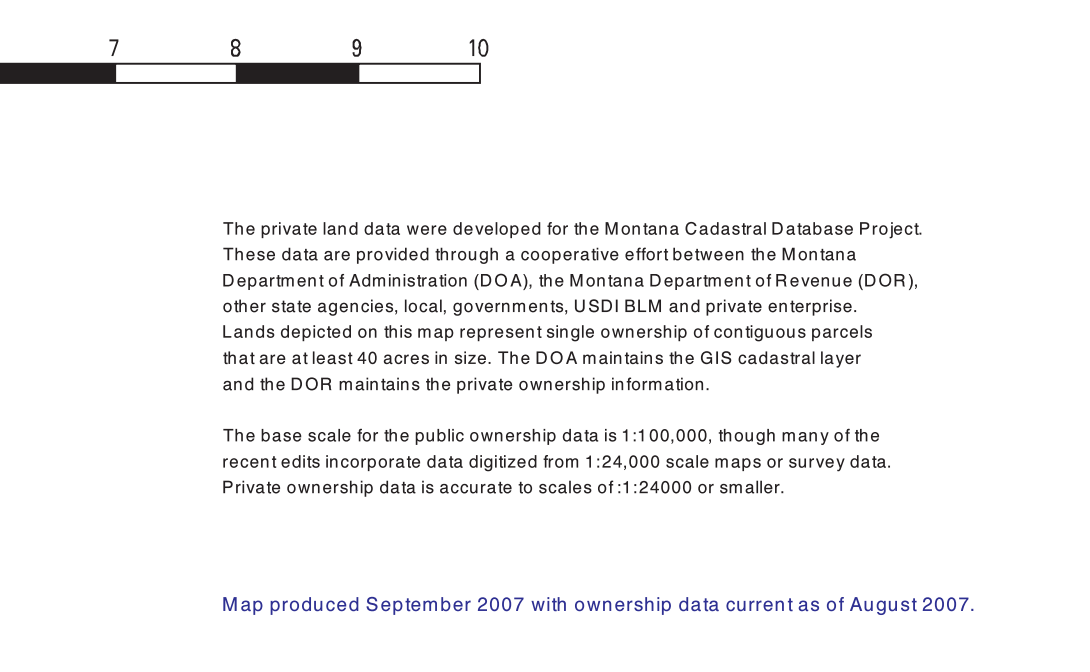


**NOTES**  
 Not all legend items may appear on this map.  
 Problems shown on this map do not imply public access to any lands.  
 The status data displayed on this map may not be complete and may contain errors in boundary locations and/or coding.  
 DISCLAIMERS  
 The MT Natural Heritage Program, MT State Library, MT Dept of Administration and MT Dept of Revenue make no representations or warranties whatsoever with respect to the accuracy or completeness of the data contained in these maps and assumes no responsibility for the suitability of the data for a particular purpose. These agencies will not be liable for any damages incurred as a result of errors displayed here. The ownership boundaries displayed on this map are not based on land survey data and are not a substitute for property surveys. This map displays public and private land ownership information derived from several sources and continues to be corrected and updated.

**SOURCES / ACKNOWLEDGMENTS**  
 This map was produced as a joint effort between the MT Dept. of Fish, Wildlife, and Parks (FWP) and the Montana Natural Resource Information System (NRIS) of the Montana Department of Revenue (DOR), in response to Montana Code Annotated 87-3-308, which directs the FWP to "...work cooperatively with all state and federal land management agencies, to develop accurate land ownership maps..." in the State.  
 The public land data is from the MT Natural Heritage Program land stewardship data collection. Much of this data was originally digitized by the Bureau of Land Management (BLM) from 1:50,000 scale 84K Surface Management Data maps. Additional information, corrections and updates (especially for tribal lands and private lands) were added by the University of Montana, Wildlife Spatial Analysis Unit, during 1998-1999. Since 1998, the Montana Natural Heritage Program has made numerous updates and corrections (especially for state trust lands, Montana Fish, Wildlife & Parks areas, US Fish & Wildlife Service areas, and conservation easements). These data are based on data supplied by the various public agencies and land trusts, and have not been verified against county Montana Department of Revenue records.

The private land data were developed for the Montana Cadastral Database Project. These data are provided through a cooperative effort between the Montana Department of Administration (ODA), the Montana Department of Revenue (DOR), other state agencies, local governments, USDBLM and private enterprises. Lands depicted on this map represent single ownership or contiguous parcels that have at least 40 acres in size. The DOR maintains the GIS cadastral layer and the DOR maintains the private ownership information.  
 The base scale for the public ownership data is 1:50,000, though many of the recent cadastral data digitized from 1:24,000 scale maps or survey data. Private ownership data is accurate to scale of 1:20,000 or smaller.

Map produced September 2007 with ownership data current as of August 2007.



Parcel Num. Owner Name, Total Acres

1	SMALL JOHN W. 305	251	MILLERS DVA. CREK RANCH INC. 3715
2	WOLFE LYNN 185	252	WICKHAM WILLIAM MONTGOMERY 100
3	CONNOR EUGENE B. TRUSTEE 166	253	Q A A TRUST FOR ANDREW BRADY 120
4	CONNER EUGENE B. TRUSTEE 166	254	WICKHAM WILLIAM MONTGOMERY 100
5	HARTUNG KATHERINE WEBER 81	255	HUTCHMAN ARNE E. 872
6	WILSON WILSON 101	256	WILSON WILSON 101
7	FRIDOLF SAMUEL L. 116	257	TEAR DROP CATTLE CO LLC 1382
8	LEWIS FAMILY TRUST 61	258	WATSON FARMS INC. 1335
9	MARTIN RUTH E. 160	259	WATSON FARMS INC. 1335
10	WATSON FARMS INC. 1335	260	WATSON FARMS INC. 1335
11	LACOMBE FARMS CORP. 871	261	HERMAN ALLEN DALE 5889
12	WATSON FARMS INC. 1335	262	WATSON FARMS INC. 1335
13	WATSON FARMS INC. 1335	263	STEVENS DAVID E. 604
14	WATSON FARMS INC. 1335	264	STEVENS DAVID E. 604
15	WATSON FARMS INC. 1335	265	STEVENS DAVID E. 604
16	WATSON FARMS INC. 1335	266	STEVENS DAVID E. 604
17	WATSON FARMS INC. 1335	267	STEVENS DAVID E. 604
18	WATSON FARMS INC. 1335	268	STEVENS DAVID E. 604
19	WATSON FARMS INC. 1335	269	STEVENS DAVID E. 604
20	WATSON FARMS INC. 1335	270	STEVENS DAVID E. 604
21	WATSON FARMS INC. 1335	271	STEVENS DAVID E. 604
22	WATSON FARMS INC. 1335	272	STEVENS DAVID E. 604
23	WATSON FARMS INC. 1335	273	STEVENS DAVID E. 604
24	WATSON FARMS INC. 1335	274	STEVENS DAVID E. 604
25	WATSON FARMS INC. 1335	275	STEVENS DAVID E. 604
26	WATSON FARMS INC. 1335	276	STEVENS DAVID E. 604
27	WATSON FARMS INC. 1335	277	STEVENS DAVID E. 604
28	WATSON FARMS INC. 1335	278	STEVENS DAVID E. 604
29	WATSON FARMS INC. 1335	279	STEVENS DAVID E. 604
30	WATSON FARMS INC. 1335	280	STEVENS DAVID E. 604
31	WATSON FARMS INC. 1335	281	STEVENS DAVID E. 604
32	WATSON FARMS INC. 1335	282	STEVENS DAVID E. 604
33	WATSON FARMS INC. 1335	283	STEVENS DAVID E. 604
34	WATSON FARMS INC. 1335	284	STEVENS DAVID E. 604
35	WATSON FARMS INC. 1335	285	STEVENS DAVID E. 604
36	WATSON FARMS INC. 1335	286	STEVENS DAVID E. 604
37	WATSON FARMS INC. 1335	287	STEVENS DAVID E. 604
38	WATSON FARMS INC. 1335	288	STEVENS DAVID E. 604
39	WATSON FARMS INC. 1335	289	STEVENS DAVID E. 604
40	WATSON FARMS INC. 1335	290	STEVENS DAVID E. 604
41	WATSON FARMS INC. 1335	291	STEVENS DAVID E. 604
42	WATSON FARMS INC. 1335	292	STEVENS DAVID E. 604
43	WATSON FARMS INC. 1335	293	STEVENS DAVID E. 604
44	WATSON FARMS INC. 1335	294	STEVENS DAVID E. 604
45	WATSON FARMS INC. 1335	295	STEVENS DAVID E. 604
46	WATSON FARMS INC. 1335	296	STEVENS DAVID E. 604
47	WATSON FARMS INC. 1335	297	STEVENS DAVID E. 604
48	WATSON FARMS INC. 1335	298	STEVENS DAVID E. 604
49	WATSON FARMS INC. 1335	299	STEVENS DAVID E. 604
50	WATSON FARMS INC. 1335	300	STEVENS DAVID E. 604
51	WATSON FARMS INC. 1335	301	STEVENS DAVID E. 604
52	WATSON FARMS INC. 1335	302	STEVENS DAVID E. 604
53	WATSON FARMS INC. 1335	303	STEVENS DAVID E. 604
54	WATSON FARMS INC. 1335	304	STEVENS DAVID E. 604
55	WATSON FARMS INC. 1335	305	STEVENS DAVID E. 604
56	WATSON FARMS INC. 1335	306	STEVENS DAVID E. 604
57	WATSON FARMS INC. 1335	307	STEVENS DAVID E. 604
58	WATSON FARMS INC. 1335	308	STEVENS DAVID E. 604
59	WATSON FARMS INC. 1335	309	STEVENS DAVID E. 604
60	WATSON FARMS INC. 1335	310	STEVENS DAVID E. 604
61	WATSON FARMS INC. 1335	311	STEVENS DAVID E. 604
62	WATSON FARMS INC. 1335	312	STEVENS DAVID E. 604
63	WATSON FARMS INC. 1335	313	STEVENS DAVID E. 604
64	WATSON FARMS INC. 1335	314	STEVENS DAVID E. 604
65	WATSON FARMS INC. 1335	315	STEVENS DAVID E. 604
66	WATSON FARMS INC. 1335	316	STEVENS DAVID E. 604
67	WATSON FARMS INC. 1335	317	STEVENS DAVID E. 604
68	WATSON FARMS INC. 1335	318	STEVENS DAVID E. 604
69	WATSON FARMS INC. 1335	319	STEVENS DAVID E. 604
70	WATSON FARMS INC. 1335	320	STEVENS DAVID E. 604
71	WATSON FARMS INC. 1335	321	STEVENS DAVID E. 604
72	WATSON FARMS INC. 1335	322	STEVENS DAVID E. 604
73	WATSON FARMS INC. 1335	323	STEVENS DAVID E. 604
74	WATSON FARMS INC. 1335	324	STEVENS DAVID E. 604
75	WATSON FARMS INC. 1335	325	STEVENS DAVID E. 604
76	WATSON FARMS INC. 1335	326	STEVENS DAVID E. 604
77	WATSON FARMS INC. 1335	327	STEVENS DAVID E. 604
78	WATSON FARMS INC. 1335	328	STEVENS DAVID E. 604
79	WATSON FARMS INC. 1335	329	STEVENS DAVID E. 604
80	WATSON FARMS INC. 1335	330	STEVENS DAVID E. 604
81	WATSON FARMS INC. 1335	331	STEVENS DAVID E. 604
82	WATSON FARMS INC. 1335	332	STEVENS DAVID E. 604
83	WATSON FARMS INC. 1335	333	STEVENS DAVID E. 604
84	WATSON FARMS INC. 1335	334	STEVENS DAVID E. 604
85	WATSON FARMS INC. 1335	335	STEVENS DAVID E. 604
86	WATSON FARMS INC. 1335	336	STEVENS DAVID E. 604
87	WATSON FARMS INC. 1335	337	STEVENS DAVID E. 604
88	WATSON FARMS INC. 1335	338	STEVENS DAVID E. 604
89	WATSON FARMS INC. 1335	339	STEVENS DAVID E. 604
90	WATSON FARMS INC. 1335	340	STEVENS DAVID E. 604
91	WATSON FARMS INC. 1335	341	STEVENS DAVID E. 604
92	WATSON FARMS INC. 1335	342	STEVENS DAVID E. 604
93	WATSON FARMS INC. 1335	343	STEVENS DAVID E. 604
94	WATSON FARMS INC. 1335	344	STEVENS DAVID E. 604
95	WATSON FARMS INC. 1335	345	STEVENS DAVID E. 604
96	WATSON FARMS INC. 1335	346	STEVENS DAVID E. 604
97	WATSON FARMS INC. 1335	347	STEVENS DAVID E. 604
98	WATSON FARMS INC. 1335	348	STEVENS DAVID E. 604
99	WATSON FARMS INC. 1335	349	STEVENS DAVID E. 604
100	WATSON FARMS INC. 1335	350	STEVENS DAVID E. 604