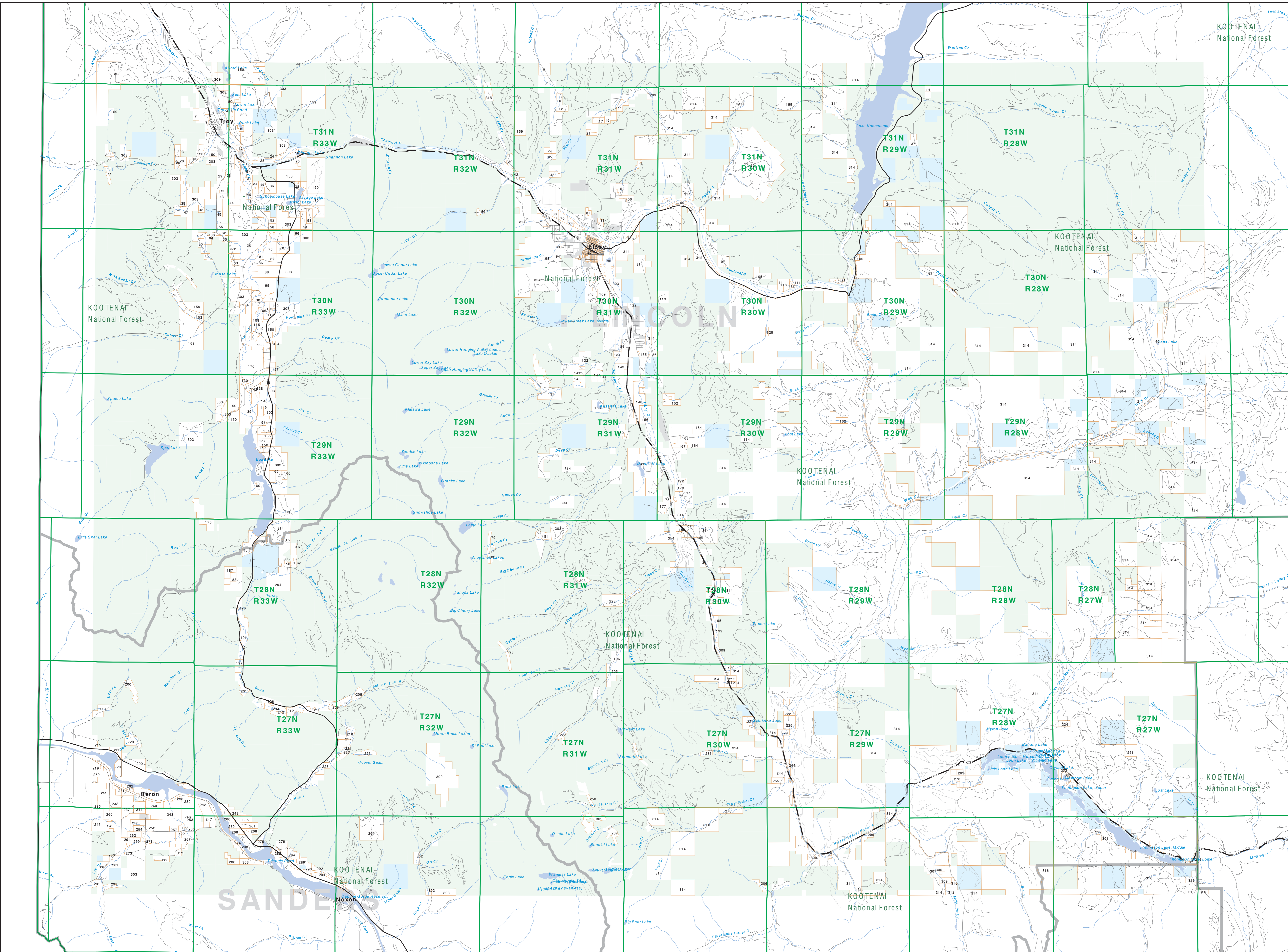


Private Land Ownership Identification

LIBBY - (48115a)



1: BEAL GARCIA & MERRIAM, 67	201: CHRISTNER ROBERT M, 161
2: DECARO JOHN W, 106	202: BUSHMAN CLARENCE L, 130
3: STERLING TRUST ED COST PRO, 150	203: HITCHCOCK WILLIAM, 40
4: SENECA JOHN W, 122	204: HANCOCK JOHN, 100
5: STIMSON LUMBER COMPANY LP, 438	205: LEVITT HAROLD EDWARD MARSHA, 45
6: THOMPSON ROBERT J, 106	206: THOMPSON W C, 108
7: DEER WHEEL SHAWNP A, 81	207: CARWELL DEWITT CAROLE L, 82
8: SACK ROBERT JAMES, 39	208: JENSEN WILLIAM A, 268
9: EAST FRONTIER PROPERTIES LLC, 73	209: HANBY JOSEPH, 130
10: STEVEN HANCOCK ALICE D, 80	210: COLLIER BARBARA, 117
11: HESTER LINDA R, 117	211: DELLMER BILL A, 114
12: HOLLEY LLOYD FERN W TRUST, 84	212: CHAMBERLAIN FRANK, 288
13: JAMES CURTIS AT THE, 118	213: FOREST PRODUCTS PARTNERS, 69
14: REYNOLDS DEANNA SURE, 41	214: FARMON JOHN P, 208
15: DAVENPORT WALTER W, 110	215: DEY WILFRED, 270
16: ROBERT ROBERT W KATHLEEN R, 17	216: HOSLEY JAMES R, 400
17: DAVENPORT WALTER W, 110	217: SOUTH WYLLIE, 208
18: NORTHWESTERN INVESTMENT CO, 35	218: SOUTH WYLLIE, 208
19: PATRICK WILLIAM S, 211	219: TOOMEY JAMES SR, 100
20: MERRILL DONALD W VIRGINIA, 16	220: MERRILL DONALD W VIRGINIA, 16
21: MERRILL DONALD W VIRGINIA, 16	221: LEO PROPERTIES LP, 101
22: MERRILL DONALD W VIRGINIA, 16	222: LEO PROPERTIES LP, 101
23: MERRILL DONALD W VIRGINIA, 16	223: LEO PROPERTIES LP, 101
24: MERRILL DONALD W VIRGINIA, 16	224: LEO PROPERTIES LP, 101
25: MERRILL DONALD W VIRGINIA, 16	225: LEO PROPERTIES LP, 101
26: MERRILL DONALD W VIRGINIA, 16	226: LEO PROPERTIES LP, 101
27: MERRILL DONALD W VIRGINIA, 16	227: LEO PROPERTIES LP, 101
28: MERRILL DONALD W VIRGINIA, 16	228: LEO PROPERTIES LP, 101
29: MERRILL DONALD W VIRGINIA, 16	229: LEO PROPERTIES LP, 101
30: MERRILL DONALD W VIRGINIA, 16	230: LEO PROPERTIES LP, 101
31: MERRILL DONALD W VIRGINIA, 16	231: LEO PROPERTIES LP, 101
32: MERRILL DONALD W VIRGINIA, 16	232: LEO PROPERTIES LP, 101
33: MERRILL DONALD W VIRGINIA, 16	233: LEO PROPERTIES LP, 101
34: MERRILL DONALD W VIRGINIA, 16	234: LEO PROPERTIES LP, 101
35: MERRILL DONALD W VIRGINIA, 16	235: LEO PROPERTIES LP, 101
36: MERRILL DONALD W VIRGINIA, 16	236: LEO PROPERTIES LP, 101
37: MERRILL DONALD W VIRGINIA, 16	237: LEO PROPERTIES LP, 101
38: MERRILL DONALD W VIRGINIA, 16	238: LEO PROPERTIES LP, 101
39: MERRILL DONALD W VIRGINIA, 16	239: LEO PROPERTIES LP, 101
40: MERRILL DONALD W VIRGINIA, 16	240: LEO PROPERTIES LP, 101
41: MERRILL DONALD W VIRGINIA, 16	241: LEO PROPERTIES LP, 101
42: MERRILL DONALD W VIRGINIA, 16	242: LEO PROPERTIES LP, 101
43: MERRILL DONALD W VIRGINIA, 16	243: LEO PROPERTIES LP, 101
44: MERRILL DONALD W VIRGINIA, 16	244: LEO PROPERTIES LP, 101
45: MERRILL DONALD W VIRGINIA, 16	245: LEO PROPERTIES LP, 101
46: MERRILL DONALD W VIRGINIA, 16	246: LEO PROPERTIES LP, 101
47: MERRILL DONALD W VIRGINIA, 16	247: LEO PROPERTIES LP, 101
48: MERRILL DONALD W VIRGINIA, 16	248: LEO PROPERTIES LP, 101
49: MERRILL DONALD W VIRGINIA, 16	249: LEO PROPERTIES LP, 101
50: MERRILL DONALD W VIRGINIA, 16	250: LEO PROPERTIES LP, 101
51: MERRILL DONALD W VIRGINIA, 16	251: LEO PROPERTIES LP, 101
52: MERRILL DONALD W VIRGINIA, 16	252: LEO PROPERTIES LP, 101
53: MERRILL DONALD W VIRGINIA, 16	253: LEO PROPERTIES LP, 101
54: MERRILL DONALD W VIRGINIA, 16	254: LEO PROPERTIES LP, 101
55: MERRILL DONALD W VIRGINIA, 16	255: LEO PROPERTIES LP, 101
56: MERRILL DONALD W VIRGINIA, 16	256: LEO PROPERTIES LP, 101
57: MERRILL DONALD W VIRGINIA, 16	257: LEO PROPERTIES LP, 101
58: MERRILL DONALD W VIRGINIA, 16	258: LEO PROPERTIES LP, 101
59: MERRILL DONALD W VIRGINIA, 16	259: LEO PROPERTIES LP, 101
60: MERRILL DONALD W VIRGINIA, 16	260: LEO PROPERTIES LP, 101
61: MERRILL DONALD W VIRGINIA, 16	261: LEO PROPERTIES LP, 101
62: MERRILL DONALD W VIRGINIA, 16	262: LEO PROPERTIES LP, 101
63: MERRILL DONALD W VIRGINIA, 16	263: LEO PROPERTIES LP, 101
64: MERRILL DONALD W VIRGINIA, 16	264: LEO PROPERTIES LP, 101
65: MERRILL DONALD W VIRGINIA, 16	265: LEO PROPERTIES LP, 101
66: MERRILL DONALD W VIRGINIA, 16	266: LEO PROPERTIES LP, 101
67: MERRILL DONALD W VIRGINIA, 16	267: LEO PROPERTIES LP, 101
68: MERRILL DONALD W VIRGINIA, 16	268: LEO PROPERTIES LP, 101
69: MERRILL DONALD W VIRGINIA, 16	269: LEO PROPERTIES LP, 101
70: MERRILL DONALD W VIRGINIA, 16	270: LEO PROPERTIES LP, 101
71: MERRILL DONALD W VIRGINIA, 16	271: LEO PROPERTIES LP, 101
72: MERRILL DONALD W VIRGINIA, 16	272: LEO PROPERTIES LP, 101
73: MERRILL DONALD W VIRGINIA, 16	273: LEO PROPERTIES LP, 101
74: MERRILL DONALD W VIRGINIA, 16	274: LEO PROPERTIES LP, 101
75: MERRILL DONALD W VIRGINIA, 16	275: LEO PROPERTIES LP, 101
76: MERRILL DONALD W VIRGINIA, 16	276: LEO PROPERTIES LP, 101
77: MERRILL DONALD W VIRGINIA, 16	277: LEO PROPERTIES LP, 101
78: MERRILL DONALD W VIRGINIA, 16	278: LEO PROPERTIES LP, 101
79: MERRILL DONALD W VIRGINIA, 16	279: LEO PROPERTIES LP, 101
80: MERRILL DONALD W VIRGINIA, 16	280: LEO PROPERTIES LP, 101
81: MERRILL DONALD W VIRGINIA, 16	281: LEO PROPERTIES LP, 101
82: MERRILL DONALD W VIRGINIA, 16	282: LEO PROPERTIES LP, 101
83: MERRILL DONALD W VIRGINIA, 16	283: LEO PROPERTIES LP, 101
84: MERRILL DONALD W VIRGINIA, 16	284: LEO PROPERTIES LP, 101
85: MERRILL DONALD W VIRGINIA, 16	285: LEO PROPERTIES LP, 101
86: MERRILL DONALD W VIRGINIA, 16	286: LEO PROPERTIES LP, 101
87: MERRILL DONALD W VIRGINIA, 16	287: LEO PROPERTIES LP, 101
88: MERRILL DONALD W VIRGINIA, 16	288: LEO PROPERTIES LP, 101
89: MERRILL DONALD W VIRGINIA, 16	289: LEO PROPERTIES LP, 101
90: MERRILL DONALD W VIRGINIA, 16	290: LEO PROPERTIES LP, 101
91: MERRILL DONALD W VIRGINIA, 16	291: LEO PROPERTIES LP, 101
92: MERRILL DONALD W VIRGINIA, 16	292: LEO PROPERTIES LP, 101
93: MERRILL DONALD W VIRGINIA, 16	293: LEO PROPERTIES LP, 101
94: MERRILL DONALD W VIRGINIA, 16	294: LEO PROPERTIES LP, 101
95: MERRILL DONALD W VIRGINIA, 16	295: LEO PROPERTIES LP, 101
96: MERRILL DONALD W VIRGINIA, 16	296: LEO PROPERTIES LP, 101
97: MERRILL DONALD W VIRGINIA, 16	297: LEO PROPERTIES LP, 101
98: MERRILL DONALD W VIRGINIA, 16	298: LEO PROPERTIES LP, 101
99: MERRILL DONALD W VIRGINIA, 16	299: LEO PROPERTIES LP, 101
100: MERRILL DONALD W VIRGINIA, 16	300: LEO PROPERTIES LP, 101

Legend:

- Private (Light Green)
- State Lands (Light Blue)
- Forest Service (Light Green)
- Bureau of Land Management (Yellow)
- National Park Service (Purple)
- Other Federal Land (Orange)
- Fish and Wildlife Service (Teal)
- Road (Grey)
- Primitive Road (Thin Grey)
- River (Blue)
- Stream/Creek (Blue)
- Intermittent Creek (Blue)
- MFWP - WMA (Light Green)
- Lake/Reservoir (Blue)
- Interstate (Thick Grey)
- Secondary Highway (Thin Grey)
- Highway (Thin Grey)
- Wildlife Management Area (Darker Green)

NOTES:
 Not all legend items will appear on this map. Features shown on this map do not imply public access to any lands. The land status data displayed on this map may not be complete and may contain errors in boundary locations and/or coding.

DISCLAIMERS:
 The MT Natural Heritage Program, MT State Library, MT Dept. of Administration and MT Dept. of Revenue make no representations or warranties whatsoever with respect to the accuracy or completeness of the data contained in these maps and assumes no responsibility for the suitability of these data for a particular purpose. These agencies will not be liable for any damages incurred as a result of errors displayed here. The severable boundaries displayed on this map are based on land survey data and are not a substitute for property surveys. This map displays public and private land ownership information derived from several sources and continues to be corrected and updated.

SOURCES / ACKNOWLEDGEMENTS:
 This map was produced as a joint effort between the MT Dept. of Fish, Wildlife, and Parks (FWP) and the Montana Natural Resource Information System (NRIS) Department of Administration (DCA), the Montana Department of Revenue (DOR), other state agencies, local governments, USDI/BLM and private enterprise. Land depicted on this map represent single ownership of contiguous parcels that are at least 40 acres in size. The DCA maintains the GIS database layer and the DOR maintains the private ownership information.

The base scale for the public ownership data is 1:100,000. Roughly many of the recent files incorporate data digitized from 1:24,000 scale maps or survey data. Private ownership data is accurate to scales of 1:24,000 or smaller.

Map produced September 2007 with ownership data current as of August 2007.

USGS 100,000 Scale Quadrangle Index

81100	81110	81120	81130	81140	81150	81160	81170	81180	81190	81200
81100	81110	81120	81130	81140	81150	81160	81170	81180	81190	81200
81200	81210	81220	81230	81240	81250	81260	81270	81280	81290	81300
81200	81210	81220	81230	81240	81250	81260	81270	81280	81290	81300
81300	81310	81320	81330	81340	81350	81360	81370	81380	81390	81400
81300	81310	81320	81330	81340	81350	81360	81370	81380	81390	81400