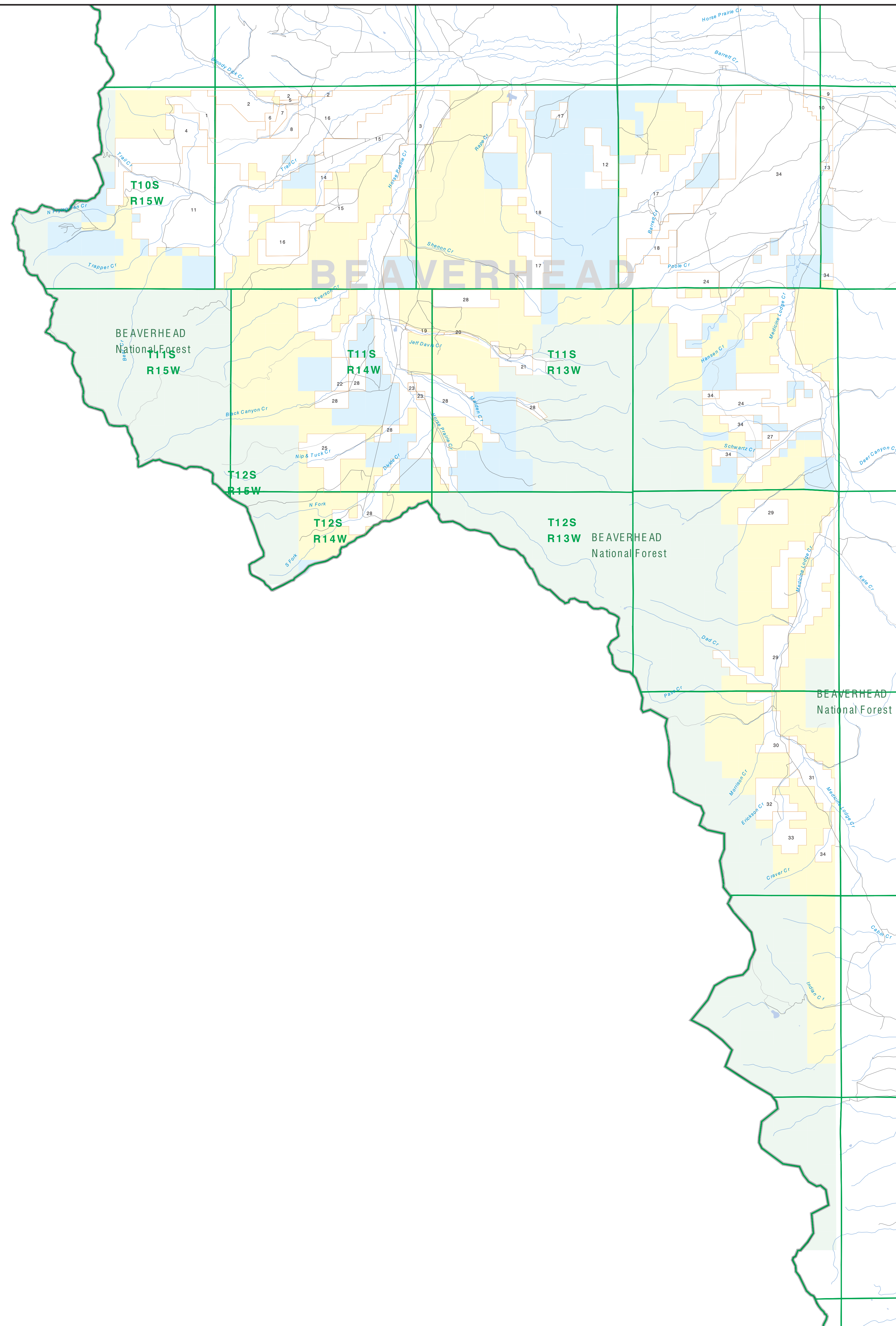


# Private Land Ownership Identification

## LEADORE - (44113b)

1. STOLL RAYMOND A TRUSTEE, 455
2. HORSE PRANCH LIVESTOCK, 393
3. BOY RANCH PARTNERSHIP, 131
4. WOODY EDWARDS, 191
5. GEARLY JOHN THOMAS, 41
6. KLEIN EUGENE, 112
7. HURLEY EDWIN, 155
8. KEER BEARD, 213
9. PETERS ROBERT E, 18
10. WOLFE HERFORD BUNCH, 339
11. STEVEN CRICK, 650
12. HENRICHSON INC, 371
13. WELLS BELL, 42
14. WINGO THOMAS, 215
15. PETERS ROBERT E, 355
16. LEWIS FRANKER LLC, 5271
17. CENTRALIA LIVESTOCK, 654
18. RARKE TR RANCH INC, 210
19. BOE WENDALL INC, 74, 90
20. HALEY DON, 41
21. GUNTERSON PAPER INDUSTRIES INC, 425
22. FURMAN DOUGLAS L, 223
23. PETERS ROBERT E, 355, 4, 41
24. RARKE TR MICHAEL A, 1412
25. LAYTON MICHAEL, 125
26. HANSEN LIVESTOCK INC, 121
27. PETERS ROBERT E, 619
28. DENHAM RANCHES INC, 494
29. HUNTER THE EUGENE, 467
30. ALDRIDGE LIVESTOCK COMPANY, 971
31. HANSEN LIVESTOCK CO, 151
32. HANSEN KATHA E, 542
34. HANSEN LIVESTOCK COMPANY, 13212




**NOTES:**  
 Not all legend items may appear on this map.  
 Features shown on this map do not imply public access to any lands.  
 The land status data displayed on this map may not be complete and may contain errors in boundary location and/or coding.  
**DISCLAIMER:**  
 The MT Natural Heritage Program, MT State Library, MT Dept of Administration and MT Dept of Revenue make no representations or warranties whatsoever with respect to the accuracy or completeness of the data contained on these maps and assumes no responsibility for the suitability of these data for a particular purpose. These agencies will not be liable for any damages incurred as a result of errors displayed here. The ownership boundaries displayed on this map are not based on land survey data and are not a substitute for property surveys. This map displays public and private land ownership information derived from several sources and continues to be corrected and updated.

**SOURCES / ACKNOWLEDGEMENTS**  
 This map was produced as a joint effort between the MT Dept of Fish, Wildlife, and Parks (FWP) and the Montana Natural Resource Information System (NRIS) of the MT State Library, in response to Montana Code Annotated §7-5-203, which directs the FWP to "...work cooperatively with all state and federal land management agencies...to develop accurate land ownership maps...in the State".  
 The public land data is from the MT Natural Heritage Program land stewardship data collection. Much of this data was originally digitized by the Bureau of Land Management (BLM) from 1:100,000 scale BLM Surface Management Swath maps. Additional information, corrections and updates (especially for riparian lands and private lands) were added by the University of Montana, wildlife Spatial Analysis Unit during 1999-1998. Since 1998, the Montana Natural Heritage Program has made numerous updates and corrections (especially for state trust lands, Montana Fish, Wildlife & Parks areas, US Fish & Wildlife Service areas, and conservation easements). These edits are based on data supplied by the various public agencies and land trusts, and have not been verified against county or Montana Department of Revenue records.

The private land data were developed for the Montana Cadastral Database Project. These data are provided through a cooperative effort between the Montana Department of Administration (DOA), the Montana Department of Revenue (DOR), other state agencies, local governments, USFS BLM and private enterprise. Lands depicted on this map represent single ownership or contiguous parcels that are at least 60 acres in size. The DOA maintains the GIS cadastral layer and the DOR maintains the private ownership information.  
 The base scale for the public ownership data is 1:100,000. Though many of the recent public ownership data digitized from 1:24,000 scale maps or survey data. Private ownership data is accurate to scales of 1:24,000 or smaller.  
 Map produced September 2007 with ownership data current as of August 2007.

**USGS 100,000 Scale Quadrangle Index**

48110	48110	48110	48110	48110	48110	48110	48110	48110	48110
48110	48110	48110	48110	48110	48110	48110	48110	48110	48110
48110	48110	48110	48110	48110	48110	48110	48110	48110	48110
48110	48110	48110	48110	48110	48110	48110	48110	48110	48110
48110	48110	48110	48110	48110	48110	48110	48110	48110	48110
48110	48110	48110	48110	48110	48110	48110	48110	48110	48110
48110	48110	48110	48110	48110	48110	48110	48110	48110	48110
48110	48110	48110	48110	48110	48110	48110	48110	48110	48110
48110	48110	48110	48110	48110	48110	48110	48110	48110	48110
48110	48110	48110	48110	48110	48110	48110	48110	48110	48110