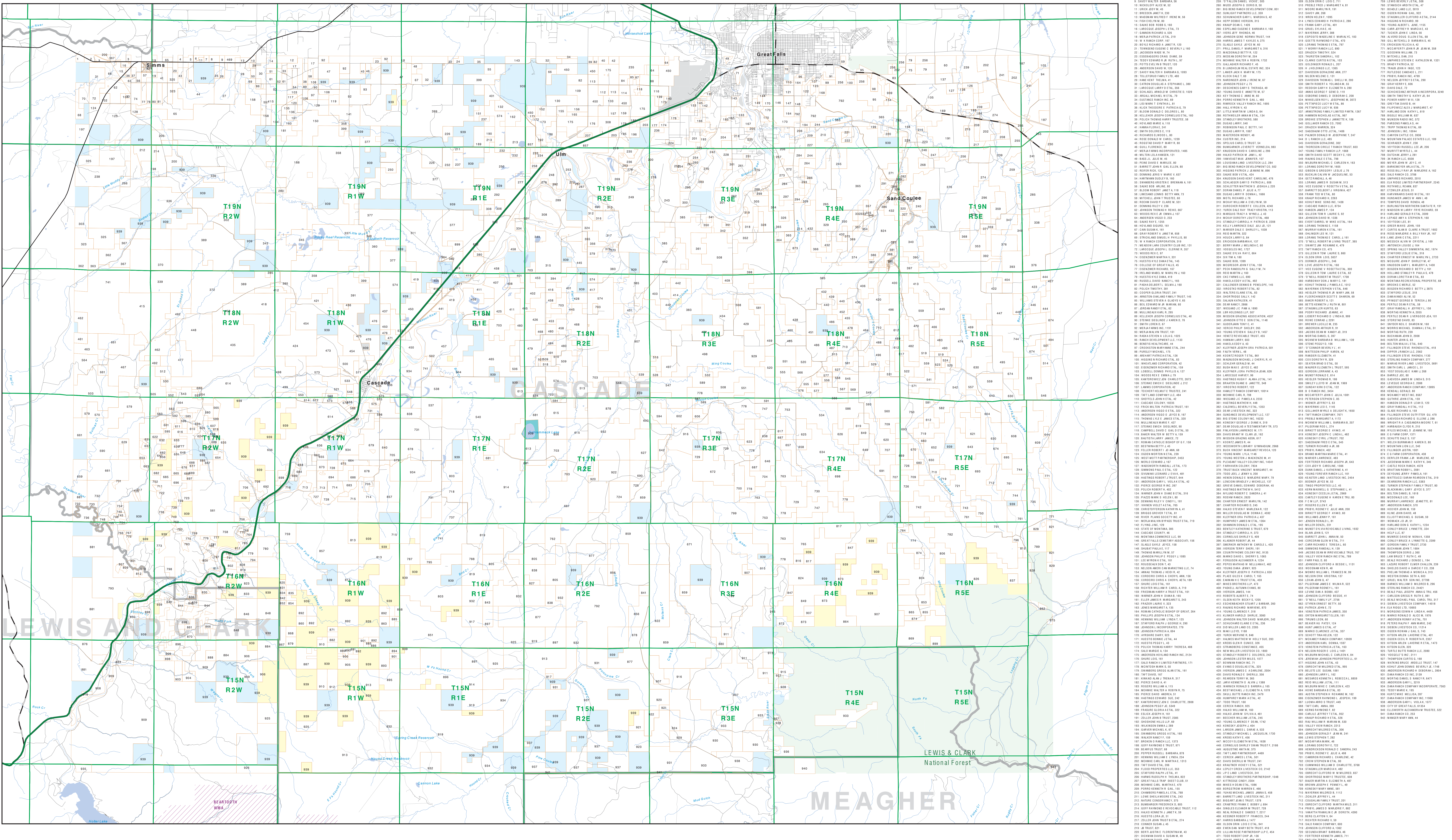


Private Land Ownership Identification GREAT FALLS SOUTH - (47111a)

Parcel Num. Owner Name. Total Acres



Legend for land ownership types: Private, Forest Service, Bureau of Land Management, National Park Service, Fish and Wildlife Service, State Lands, Local Govt, Native American, MFWP - WMA, Lake/Reservoir, Road, Primitive Road, River, Stream/Creek, Intermittent Creek, Township, County Border, Fish Wildlife & Parks Wildlife Management Area, Highway.

NOTES: Not all legend items may appear on this map. Follow-up information on this map is not intended to be a substitute for a professional purpose. The ownership boundaries displayed on this map are not based on land survey data and are not available for property purposes. This map displays public and private land ownership information derived from several sources and continues to be corrected and updated.

SOURCES & ACKNOWLEDGMENTS: This map was produced as a joint effort between the MT Dept. of Fish, Wildlife, and Parks (FWP) and the Montana Natural Resource Information System (NRIS) of the MT Dept. of Natural Resources (DNR). The Montana Department of Natural Resources (DNR) provides the FWP with all state and federal land management information. To develop accurate land ownership maps, the DNR provides the GIS data layer and the FWP provides the private ownership information.

USGS 100,000 Scale Quadrangle Index table with grid coordinates (e.g., 48100 48150, 48150 48200) and corresponding map sheet numbers.