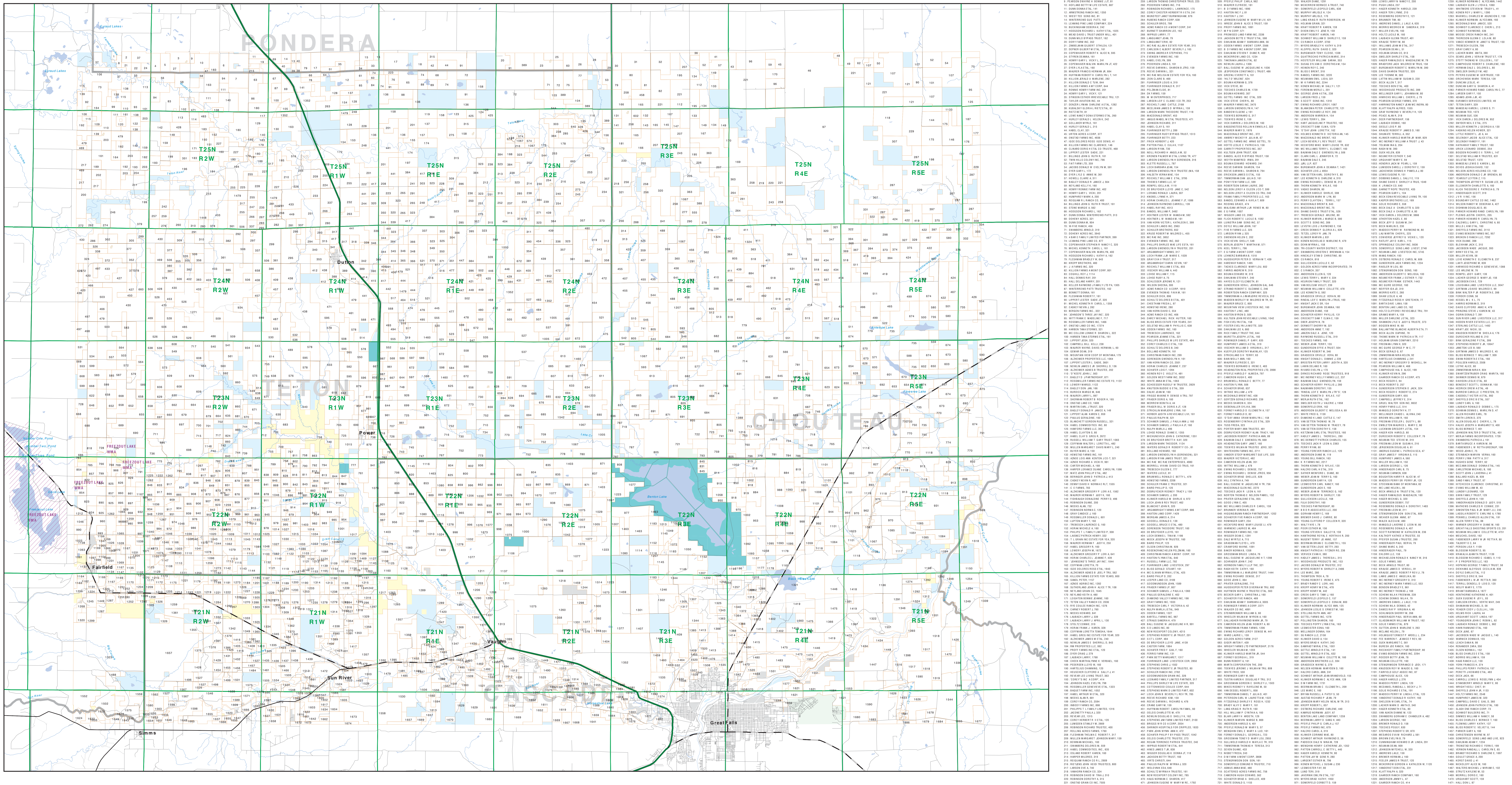


Private Land Ownership Identification

GREAT FALLS NORTH - (47111b)

Parish:Num Owner Name Total Acres



- Private
- Forest Service
- Bureau of Land Management
- National Park Service
- Other Federal Land
- Fish and Wildlife Service
- State Lands
- Local Govt
- Native American
- MFWP - WMA
- Lake/Reservoir
- Interstate
- Secondary Highway
- Highway
- Primitive Road
- River
- Stream/Creek
- Intermittent Creek
- Township
- County Border
- Fish & Wildlife Service
- Wildlife Management Area

NOTES:
 Not all land parcels are shown on this map.
 The land status shown on this map is for informational purposes only. It is not a legal document and should not be used to determine legal rights or obligations.
 The data shown on this map was derived from the Montana Department of Fish, Wildlife & Parks. The data is current as of the date of the map's production.
 The map is intended for informational purposes only. It is not a legal document and should not be used to determine legal rights or obligations.
 The data shown on this map was derived from the Montana Department of Fish, Wildlife & Parks. The data is current as of the date of the map's production.

SOURCES & ACKNOWLEDGMENTS:
 The map was prepared as a joint effort between the MT Dept. of Fish, Wildlife, and Parks (DFWP) and the Montana Natural Resource Information System (MNRI).
 The data shown on this map was derived from the Montana Department of Fish, Wildlife & Parks. The data is current as of the date of the map's production.
 The map is intended for informational purposes only. It is not a legal document and should not be used to determine legal rights or obligations.
 The data shown on this map was derived from the Montana Department of Fish, Wildlife & Parks. The data is current as of the date of the map's production.

USGS 100,000 Scale Quadrangle Index

47111A	47111B	47111C	47111D	47111E	47111F	47111G	47111H	47111I	47111J
47111A	47111B	47111C	47111D	47111E	47111F	47111G	47111H	47111I	47111J
47111A	47111B	47111C	47111D	47111E	47111F	47111G	47111H	47111I	47111J
47111A	47111B	47111C	47111D	47111E	47111F	47111G	47111H	47111I	47111J
47111A	47111B	47111C	47111D	47111E	47111F	47111G	47111H	47111I	47111J

Parish:Num Owner Name Total Acres

001	002	003	004	005	006	007	008	009	010
001	002	003	004	005	006	007	008	009	010
001	002	003	004	005	006	007	008	009	010
001	002	003	004	005	006	007	008	009	010
001	002	003	004	005	006	007	008	009	010