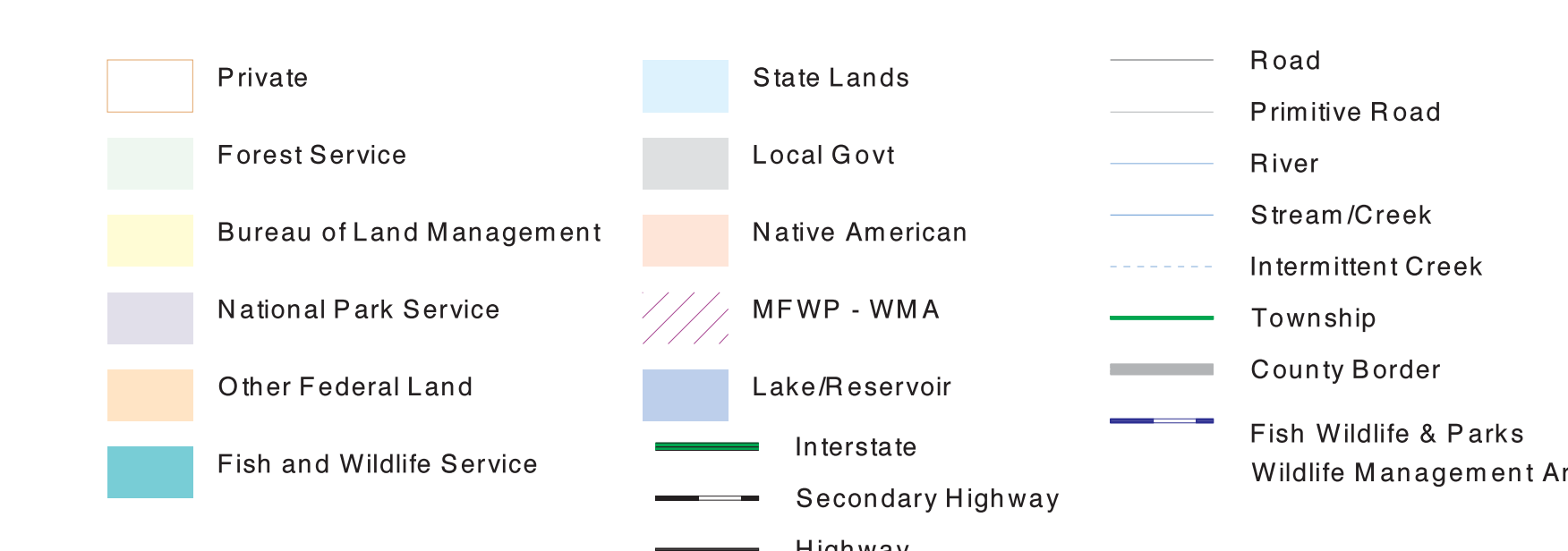
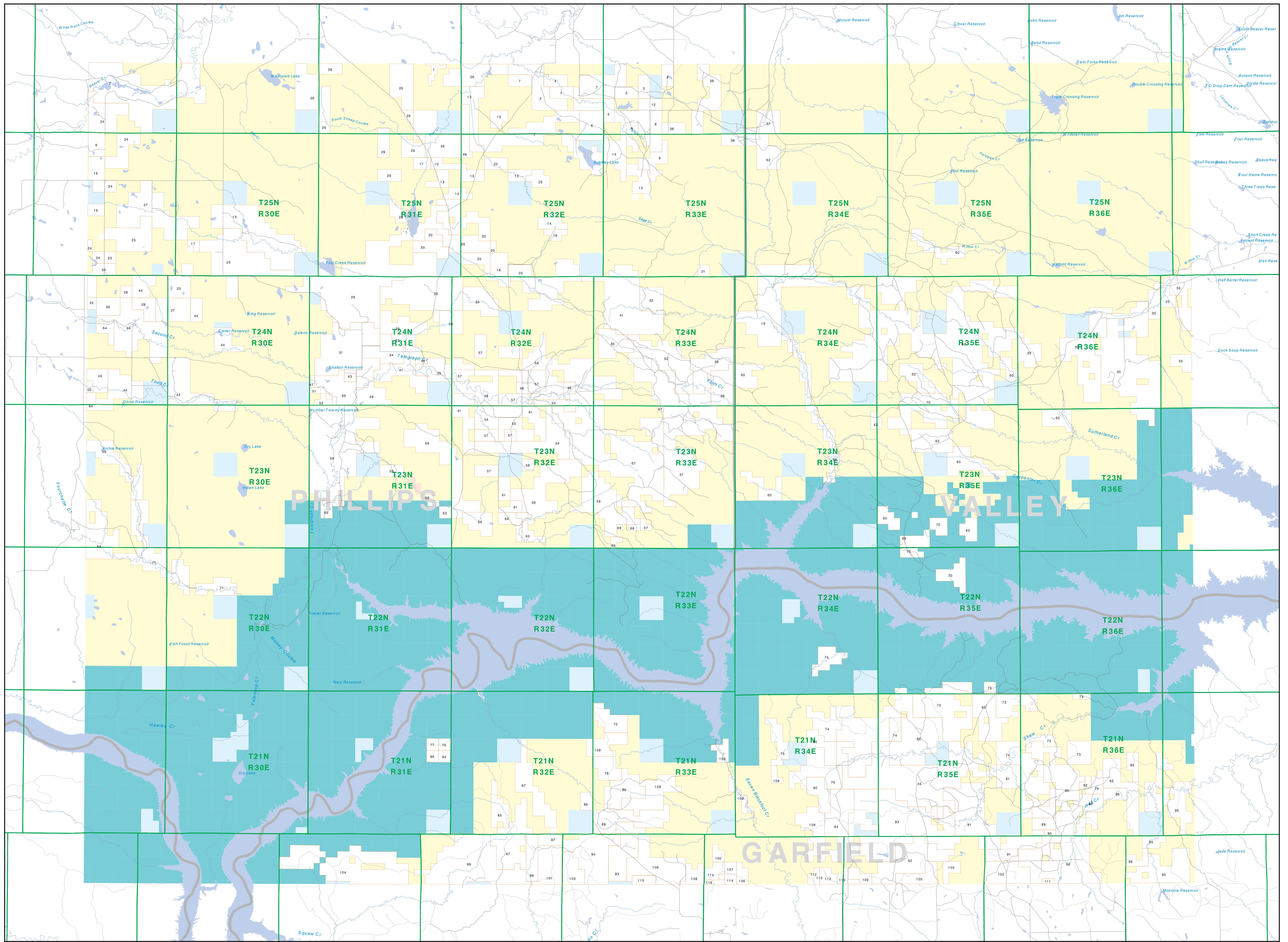


# Private Land Ownership Identification FORT PECK LAKE WEST - (47107b)

1. AMERICAN COLLOID CO. 182
2. LAZY L J RANCH CO. 4746
3. BARNETT LIVESOCK RANCH CORP. 1926
4. WOOD DOWNS L 309
5. WOOD DOWNS L 194
6. OKAMOTO MITSU DENNIS 1939
7. O'CONNOR JAMES L & JULIA E. 3905
8. KOBRECK JOHN W WOODWORLD SUBA 1277
9. EMERSON W. SHAWEN 495
10. WATSON THOMAS 290
11. FORBES THOMAS L. TRUSTEE 246
12. DOUBLE O RANCH INC. 1954
13. WATSON THOMAS L. 1959
14. KOSS PAUL 1981
15. OXLAND AND LIVESOCK INC. 2932
16. WATERS CLAY W KATHLEEN 820
17. HALL ET RICHARD W JOHN 129
18. KOSS PAUL E. 888
19. HORSE RANCH INC. 2637
20. KOSCIUSKO TRUSTEE 4441
21. FANKHAEL JULIAN 109
22. HOBBS MARCUS E. 424
23. SMITH H W FARMS INC. 160
24. FREDERICK SHAWEN M. 2984
25. SOUTH FORK CATTLE L.P. 1089
26. FREDERICK MARY 322
27. FREDERICK MARY 322
28. RUDNER CAROL M SCOTT A 899
29. HOBBS MARCUS E. 424
30. HOBBS MARCUS E. 424
31. KOSS PAUL E. 888
32. KOSS KELLY A SARAH A. 2998
33. HOBBS MARCUS E. 424
34. BERGADOL PEGGY ANNETT 881
35. WITHAM DRINKING ASSOCIATION 9371
36. KOSS EDWIN W DOBKEN K 2032
37. HEATSEY DRINKING ASSOCIATION 6192
38. RUMY DON JULIE A 2855
39. SPENCER VANCE JOHN 2216
40. SPENCER WILLIAM E VANCE E. 80
41. KOSS PAUL F KELLY A 4370
42. HOFLOTT DOUGLAS E. 10276 1884
43. BARNARD CHARLES S. 169
44. VEGETH VESETH LIVESTOCK CO. 2077
45. BLUNT FRANCHES S. 807
46. BARNARD CHARLES S. 169
47. MANN KEVIN A 77
48. SMITH FREDERICK COLL KATHLEEN 84
49. SHORES RANDAL L 890
50. SMITH FREDERICK COLL KATHLEEN 84
51. MANN TRAVIS 78
52. MANN JERRY 180
53. BARNARD CHARLES S. 169
54. JACOTT MARGARET JEANNE 505 4119
55. ENGLISHTON R ANNIE 449
56. HOFLOTT DOUGLAS E. 10276
57. ANNETT KELLY W 2264
58. COVILL JOHN 4495
59. AMERICAN PRARIE FOUNDATION 8553
60. PAGE WYTHAM LAND CATTLE L.P. 19205
61. ENGLISHTON R ANNIE 449
62. BURKE DON J JULIE A 3844
63. CONSERVATION FUND 478
64. VEGETH VESETH LIVESTOCK CORP. 2177
65. BARNARD CHARLES S. 169
66. BLUE RIDGE ADVENTURES LLC 2668
67. BARNARD CHARLES S. 169
68. LARK HILLS LAND PARTNERS 291
69. BURKE DON J JULIE A 3844
70. BURKE DON J JULIE A 3844
71. LIVING S RANCH 2980
72. WEISSER EFF 706
73. M T INC. 4272
74. MCEVERE LAND CATTLE CO. 8448
75. WATT JONATHAN V ABILE L Y. 2975
76. M T INC. 4272
77. LONE TREE LIVESTOCK INC. 160
78. SOLLEWY JANE A THOMAS 699
79. HALL JAMES R 391
80. COLLETER RANCHES INC. 4681
81. OLSON JAMES P 3941
82. RYAN THOMAS SHELLEY 2714
83. WATSON THOMAS 290
84. OFSTED ALBERTA TRUSTEE 1274
85. JONES FRANK TRUSTEE 548
86. PROPPS RANCH INC. 1628
87. HESTER BERTAL TRUSTEE 2246
88. BULLASH MARY ANN 1000
89. TRUMBULL JOHN BYVIA A 918
90. LEROUX CLIFFORD 7088
91. LEROUX CLIFFORD 7088
92. C A WRENSING 2000
93. CP LIVESTOCK INC. 1116
94. TABLE TOP RANCH INC. 2194
95. DEARER FRANKLIN KENNEDY SHER 4135
96. PROPPS RANCH INC. 1628
97. PIERCE CHRISTO BETH 324
98. WEISSER EFF 706
99. BORN A JONES FAMILY LIMITED PA 3846
100. DONALD JAMES H HERZOG MICHAEL 209
101. NEARNS STEPHEN 1097
102. PASCHE ROSELYN V JULIE A 1994
103. T J FANGLIE 89
104. WEISSER RICHARD TRUSTEE LIMITED 3858
105. WEISSER AND CHARLOTTE 972
106. CLARK R DEAN BERNARD L 291
107. LOOMIS FRED CHARLES CO TRUST 300
108. LOOMIS JANE ELVA TRUSTEE 1826
109. DONALD JAMES H HERZOG MICHAEL 209
110. HIGHLAND CLIFFORD 398
111. BURKE DON J JULIE A 3844
112. SCHMIDT RUBY EVA 284
113. MATHESY THOMAS JOHN LORENA 485
114. CHAMBERLIN CURTIS EVELYN F. 240
115. WEISSER CALVIN G EDITH 169



**NOTE:**  
Not all reported items may appear on this map.  
Features shown on this map do not imply public access to any lands.  
The land status data displayed on this map may not be complete and may contain errors in boundaries, locations and/or coding.  
**DISCLAIMERS:**  
The MT Natural Heritage Program, MT State Library, MT Dept of Administration and MT Dept of Revenue make no representations or warranties whatsoever with respect to the accuracy or completeness of the data contained in these maps and assumes no responsibility for the suitability of these data for a particular purpose. These agencies will not be liable for any damages incurred as a result of errors displayed here. The ownership boundaries displayed on this map are based on land survey data and are not a substitute for property surveys. This map displays public and private land ownership information derived from several sources and continues to be corrected and updated.

**SOURCES / ACKNOWLEDGEMENTS**  
This map was produced as a joint effort between the MT Dept. of Fish, Wildlife and Parks (FWP) and the Montana Natural Resource Information System (NRIS) of the MT State Library. In response to Montana Code Annotated 17-2-208, which directs the FWP to work cooperatively with all state and federal land management agencies to develop accurate land ownership maps. In the State's interest, to develop accurate land ownership maps. The public land data is from the MT Natural Heritage Program land stewardship data collection. Much of this data was originally digitized by the Bureau of Land Management (BLM) from 1:100,000 scale BLM Surface Management Status maps. Additional information, corrections and updates especially for tribal lands and private lands were added by the University of Montana, Wildlife Spatial Analysis Unit, during 1996-1998. Since 1998, the Montana Natural Heritage Program has made numerous updates and corrections (especially for state trust lands, Montana Fish, Wildlife & Parks areas, US Fish & Wildlife Service areas, and conservation easements). These edits are based on data supplied by the various public agencies and land trusts, and have not been verified against county or Montana Department of Revenue records.

The private land data were developed for the Montana Cadastral Database Project and these data are provided through a cooperative effort between the Montana Dept. of Administration (DOA), the Montana Department of Revenue (DOR), other state agencies, local governments, USGS (BLM) and private enterprise. Lands depicted on this map represent single ownership of 40 acres or greater that are at least 40 acres in size. The DOA maintains the GIS cadastral layer and the DOR maintains the private ownership information. The base scale for the public ownership data is 1:100,000, though many of the recent edits incorporate data digitized from 1:24,000 scale maps or survey data. Private ownership data is accurate to scales of 1:24,000 or smaller. Map produced September 2007 with ownership data current as of August 2007.

