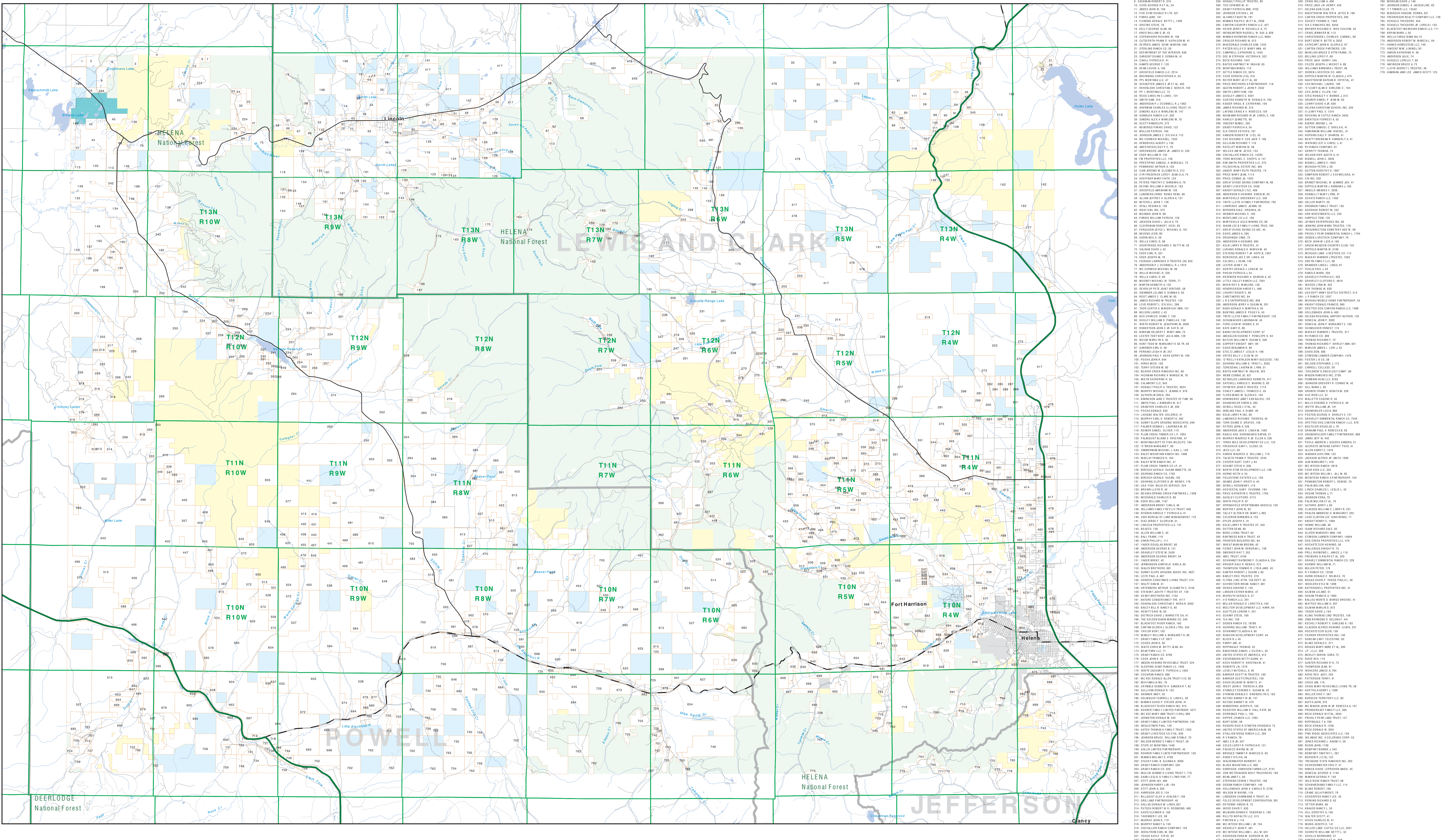


Private Land Ownership Identification ELLISTON - (46112b)



Legend for land ownership types: Private, Forest Service, Bureau of Land Management, National Park Service, Fish and Wildlife Service, State Lands, Local Govt, Native American, MFWP - WMA, Lake/Reservoir, Interstate, Secondary Highway, Highway, Road, Primitive Road, River, Stream/Creek, Intermittent Creek, Fish Wildlife & Parks Wildlife Management Area.

NOTES: Not all legends may appear on this map. Features shown on this map do not constitute public access to any lands. The land status data displayed on this map may not be complete and may vary from the current ownership records.

SOURCES/ACKNOWLEDGMENTS: This map was produced as a joint effort between the MT Dept. of Fish, Wildlife, and Parks (FWP) and the Montana Natural Resource Information System (MNRIIS) of the State of Montana.

USGS 100,000 Scale Quadrangle Index table with columns for Easting (48100-48190) and Northing (40100-40190) coordinates.