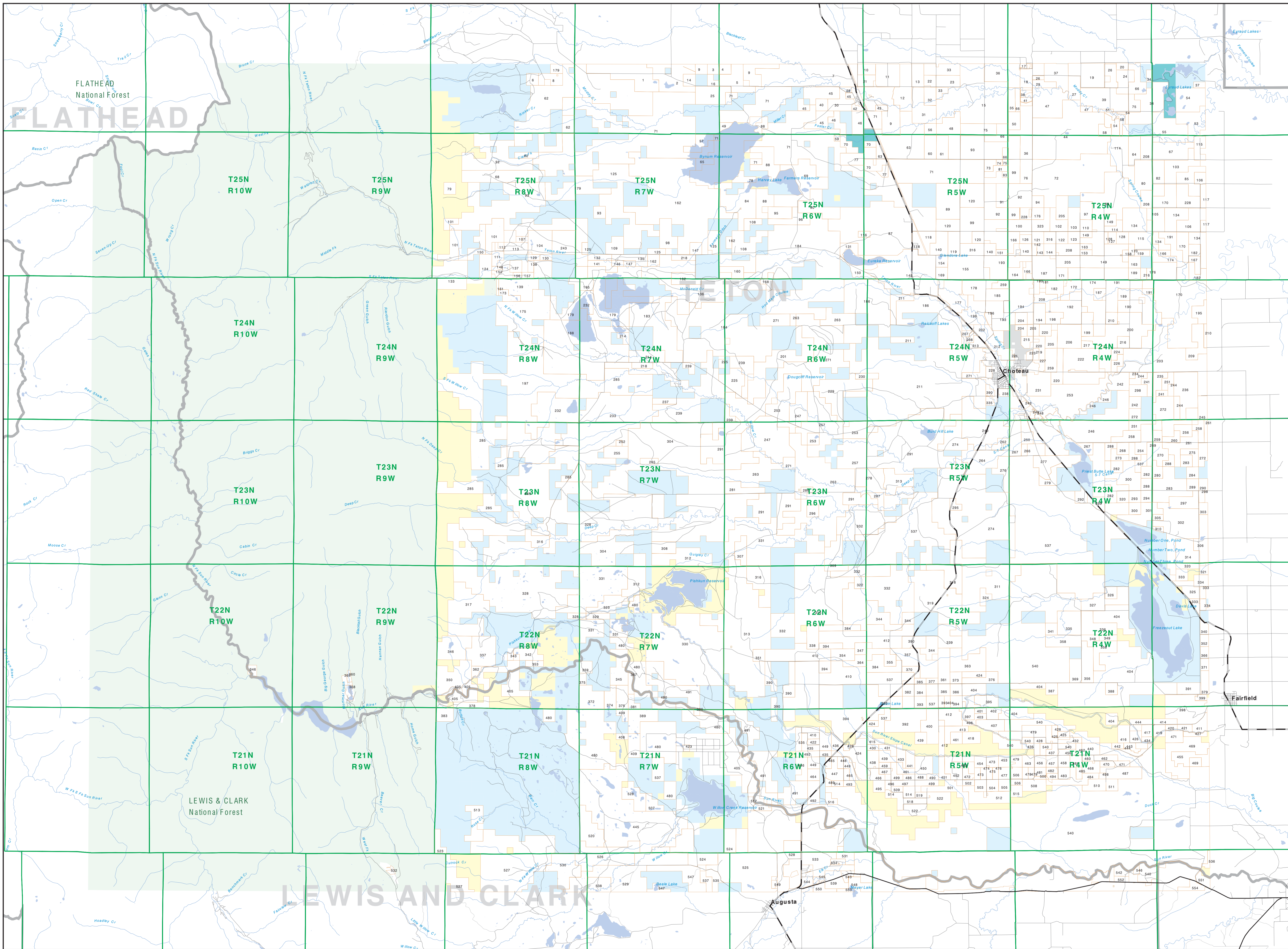


Private Land Ownership Identification

CHOTEAU - (47112b)



- Private
- Forest Service
- Bureau of Land Management
- National Park Service
- Other Federal Land
- Fish and Wildlife Service
- State Lands
- Local Govt
- Native American
- MFWP - WMA
- Lake/Reservoir
- Interstate
- Secondary Highway
- Highway
- Road
- Primitive Road
- River
- Stream/Creek
- Intermittent Creek
- Township
- County Border
- Fish Wildlife & Parks
- Wild Management Area

NOTES:
Not all legend items may appear on this map.
Features shown on this map do not imply public access to any lands.
The land status data displayed on this map may not be complete and may contain errors in boundary locations and/or coding.
DUE TO THE LIMITED DATA AVAILABLE FROM THE MONTANA NATURAL HERITAGE PROGRAM, MONTANA STATE LIBRARY, MT DEPT OF ADMINISTRATION AND MT DEPT OF REVENUE MAKE NO REPRESENTATION OR WARRANTY AS TO THE ACCURACY OR COMPLETENESS OF THE DATA CONTAINED IN THESE MAPS AND ASSUMES NO RESPONSIBILITY FOR THE ACCURACY OR COMPLETENESS OF THE DATA.
The ownership boundaries displayed on this map are not a legal land survey data and are not a substitute for property surveys.
This map displays public and private land ownership information derived from several sources and continues to be corrected and updated.

SOURCE: ACKNOWLEDGEMENTS
This map was produced as a part of the Montana MT Dept. of Fish, Wildlife, and Parks (FWP) and the Montana Natural Resource Information System (MNRIS) of the MT State Library, in response to Montana Code Annotated 87-3-308, which directs the FWP to "work cooperatively with all state and non-state land management agencies, including the Montana Department of Revenue (DOR), other state agencies, local governments, USGS BLM, and private enterprise. Land status data on this map represents a composite of computer-generated data from several sources in use. The DOR maintains the GIS database layer and the FWP maintains the private ownership information.
The public land data from the MT Natural Heritage Program and land ownership data collection. Much of this data was originally digitized by the Bureau of Land Management (BLM) in 1982 using USGS 1:250,000 Scale Maps and Management Data. Additional information, corrections and updates (especially for the BLM lands) were provided to the University of Montana, Wildlife Spatial Analysis Unit, during 1998-1999. Since 1998, the Montana Natural Heritage Program has made numerous updates and corrections (especially for state trust lands, Montana Fish, Wildlife & Parks areas, USFWS & Wildlife Service areas, and conservation easements). These data are based on data supplied by the various public agencies and land trusts, and have not been verified against county or Montana Department of Revenue records.

The private land data were developed for the Montana Cadastral Database Project. These data are provided through a cooperative effort between the Montana Department of Administration (DOA), the Montana Department of Revenue (DOR), other state agencies, local governments, USGS BLM, and private enterprise. Land status data on this map represents a composite of computer-generated data from several sources in use. The DOR maintains the GIS database layer and the FWP maintains the private ownership information.
The base scale for the private ownership data is 1:100,000. Roughly many of the recent data incorporate data digitized from 1:250,000 scale maps or survey data. Private ownership data is accurate to scales of 1:250,000 or smaller.
Map produced September 2007 with ownership data current as of August 2007.

81100	81110	81120	81130	81140	81150	81160	81170	81180	81190
81200	81210	81220	81230	81240	81250	81260	81270	81280	81290
81300	81310	81320	81330	81340	81350	81360	81370	81380	81390
81400	81410	81420	81430	81440	81450	81460	81470	81480	81490
81500	81510	81520	81530	81540	81550	81560	81570	81580	81590
81600	81610	81620	81630	81640	81650	81660	81670	81680	81690
81700	81710	81720	81730	81740	81750	81760	81770	81780	81790
81800	81810	81820	81830	81840	81850	81860	81870	81880	81890
81900	81910	81920	81930	81940	81950	81960	81970	81980	81990