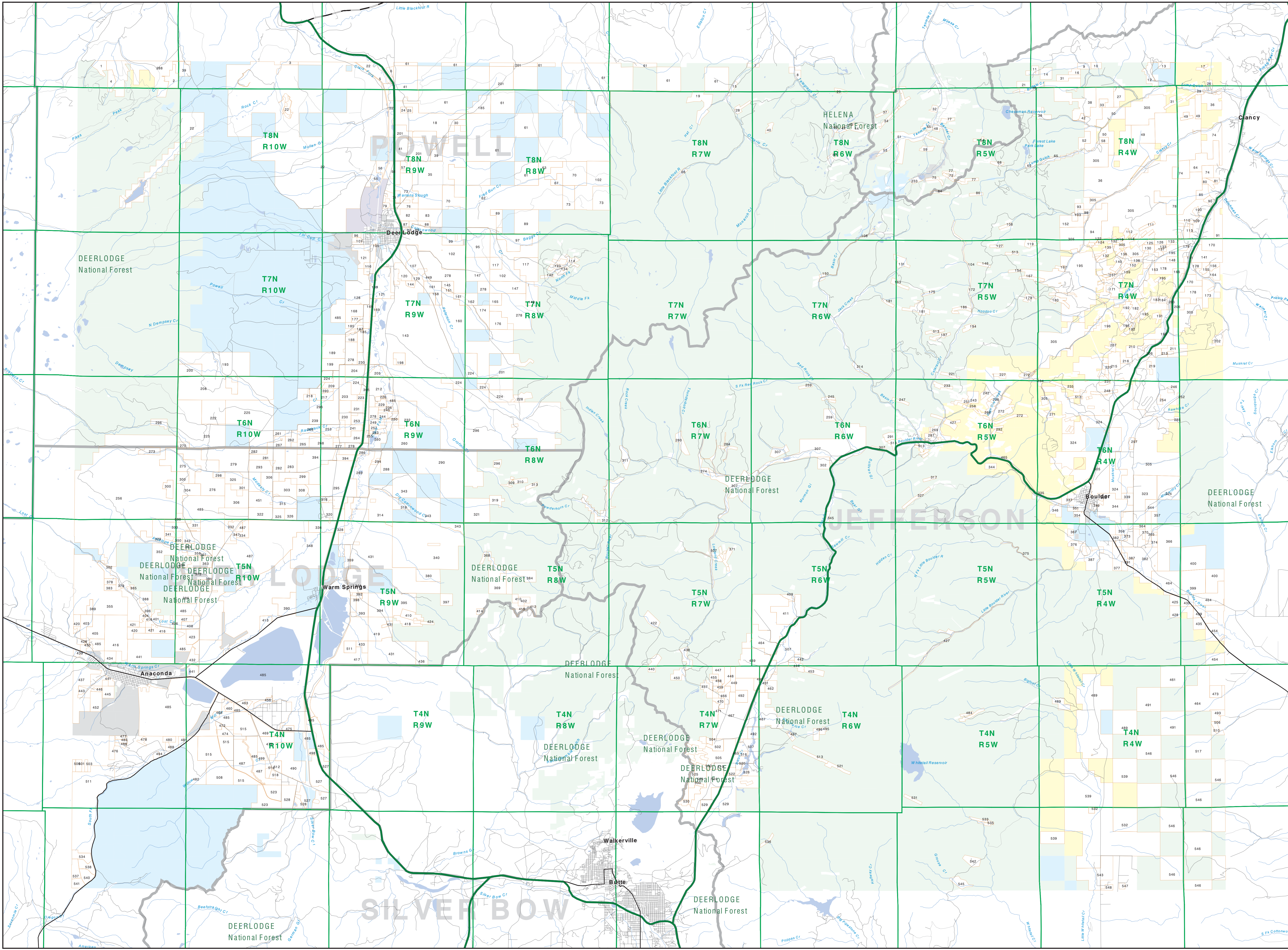


Private Land Ownership Identification

BUTTE NORTH - (46112a)

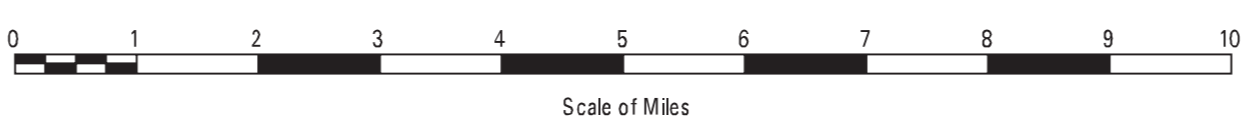


1	008 SHARON ALBERT ET AL	1.85	301	WILLIS ROBERTSON	1.00	601	WILLIS GROUP LLC	1.00
2	ANDERSON PARRISH ET AL	2.00	302	TELLUS GROUP W M COLLEEN	4.11	602	HARRINGTON DANIEL J	2.00
3	BECK DONALD R	1.00	303	WINDY HILLS	1.00	603	JOHN TOSCHER	1.00
4	BECK DONALD R	1.00	304	VANDER JET	1.00	604	HARRINGTON DANIEL J	2.00
5	WILES JOHN S	1.00	305	WINDY HILLS	1.00	605	WINDY HILLS	1.00
6	WILES JOHN S	1.00	306	WINDY HILLS	1.00	606	BOONE THOMAS A TRUSTEES	1.00
7	WILES JOHN S	1.00	307	WINDY HILLS	1.00	607	BOONE THOMAS A TRUSTEES	1.00
8	WILES JOHN S	1.00	308	WINDY HILLS	1.00	608	HICKLE RANDALL J DONOR	1.00
9	WILES JOHN S	1.00	309	WINDY HILLS	1.00	609	HICKLE RANDALL J DONOR	1.00
10	WILES JOHN S	1.00	310	WINDY HILLS	1.00	610	HICKLE RANDALL J DONOR	1.00
11	WILES JOHN S	1.00	311	WINDY HILLS	1.00	611	HICKLE RANDALL J DONOR	1.00
12	WILES JOHN S	1.00	312	WINDY HILLS	1.00	612	HICKLE RANDALL J DONOR	1.00
13	WILES JOHN S	1.00	313	WINDY HILLS	1.00	613	HICKLE RANDALL J DONOR	1.00
14	WILES JOHN S	1.00	314	WINDY HILLS	1.00	614	HICKLE RANDALL J DONOR	1.00
15	WILES JOHN S	1.00	315	WINDY HILLS	1.00	615	HICKLE RANDALL J DONOR	1.00
16	WILES JOHN S	1.00	316	WINDY HILLS	1.00	616	HICKLE RANDALL J DONOR	1.00
17	WILES JOHN S	1.00	317	WINDY HILLS	1.00	617	HICKLE RANDALL J DONOR	1.00
18	WILES JOHN S	1.00	318	WINDY HILLS	1.00	618	HICKLE RANDALL J DONOR	1.00
19	WILES JOHN S	1.00	319	WINDY HILLS	1.00	619	HICKLE RANDALL J DONOR	1.00
20	WILES JOHN S	1.00	320	WINDY HILLS	1.00	620	HICKLE RANDALL J DONOR	1.00
21	WILES JOHN S	1.00	321	WINDY HILLS	1.00	621	HICKLE RANDALL J DONOR	1.00
22	WILES JOHN S	1.00	322	WINDY HILLS	1.00	622	HICKLE RANDALL J DONOR	1.00
23	WILES JOHN S	1.00	323	WINDY HILLS	1.00	623	HICKLE RANDALL J DONOR	1.00
24	WILES JOHN S	1.00	324	WINDY HILLS	1.00	624	HICKLE RANDALL J DONOR	1.00
25	WILES JOHN S	1.00	325	WINDY HILLS	1.00	625	HICKLE RANDALL J DONOR	1.00
26	WILES JOHN S	1.00	326	WINDY HILLS	1.00	626	HICKLE RANDALL J DONOR	1.00
27	WILES JOHN S	1.00	327	WINDY HILLS	1.00	627	HICKLE RANDALL J DONOR	1.00
28	WILES JOHN S	1.00	328	WINDY HILLS	1.00	628	HICKLE RANDALL J DONOR	1.00
29	WILES JOHN S	1.00	329	WINDY HILLS	1.00	629	HICKLE RANDALL J DONOR	1.00
30	WILES JOHN S	1.00	330	WINDY HILLS	1.00	630	HICKLE RANDALL J DONOR	1.00
31	WILES JOHN S	1.00	331	WINDY HILLS	1.00	631	HICKLE RANDALL J DONOR	1.00
32	WILES JOHN S	1.00	332	WINDY HILLS	1.00	632	HICKLE RANDALL J DONOR	1.00
33	WILES JOHN S	1.00	333	WINDY HILLS	1.00	633	HICKLE RANDALL J DONOR	1.00
34	WILES JOHN S	1.00	334	WINDY HILLS	1.00	634	HICKLE RANDALL J DONOR	1.00
35	WILES JOHN S	1.00	335	WINDY HILLS	1.00	635	HICKLE RANDALL J DONOR	1.00
36	WILES JOHN S	1.00	336	WINDY HILLS	1.00	636	HICKLE RANDALL J DONOR	1.00
37	WILES JOHN S	1.00	337	WINDY HILLS	1.00	637	HICKLE RANDALL J DONOR	1.00
38	WILES JOHN S	1.00	338	WINDY HILLS	1.00	638	HICKLE RANDALL J DONOR	1.00
39	WILES JOHN S	1.00	339	WINDY HILLS	1.00	639	HICKLE RANDALL J DONOR	1.00
40	WILES JOHN S	1.00	340	WINDY HILLS	1.00	640	HICKLE RANDALL J DONOR	1.00
41	WILES JOHN S	1.00	341	WINDY HILLS	1.00	641	HICKLE RANDALL J DONOR	1.00
42	WILES JOHN S	1.00	342	WINDY HILLS	1.00	642	HICKLE RANDALL J DONOR	1.00
43	WILES JOHN S	1.00	343	WINDY HILLS	1.00	643	HICKLE RANDALL J DONOR	1.00
44	WILES JOHN S	1.00	344	WINDY HILLS	1.00	644	HICKLE RANDALL J DONOR	1.00
45	WILES JOHN S	1.00	345	WINDY HILLS	1.00	645	HICKLE RANDALL J DONOR	1.00
46	WILES JOHN S	1.00	346	WINDY HILLS	1.00	646	HICKLE RANDALL J DONOR	1.00
47	WILES JOHN S	1.00	347	WINDY HILLS	1.00	647	HICKLE RANDALL J DONOR	1.00
48	WILES JOHN S	1.00	348	WINDY HILLS	1.00	648	HICKLE RANDALL J DONOR	1.00
49	WILES JOHN S	1.00	349	WINDY HILLS	1.00	649	HICKLE RANDALL J DONOR	1.00
50	WILES JOHN S	1.00	350	WINDY HILLS	1.00	650	HICKLE RANDALL J DONOR	1.00
51	WILES JOHN S	1.00	351	WINDY HILLS	1.00	651	HICKLE RANDALL J DONOR	1.00
52	WILES JOHN S	1.00	352	WINDY HILLS	1.00	652	HICKLE RANDALL J DONOR	1.00
53	WILES JOHN S	1.00	353	WINDY HILLS	1.00	653	HICKLE RANDALL J DONOR	1.00
54	WILES JOHN S	1.00	354	WINDY HILLS	1.00	654	HICKLE RANDALL J DONOR	1.00
55	WILES JOHN S	1.00	355	WINDY HILLS	1.00	655	HICKLE RANDALL J DONOR	1.00
56	WILES JOHN S	1.00	356	WINDY HILLS	1.00	656	HICKLE RANDALL J DONOR	1.00
57	WILES JOHN S	1.00	357	WINDY HILLS	1.00	657	HICKLE RANDALL J DONOR	1.00
58	WILES JOHN S	1.00	358	WINDY HILLS	1.00	658	HICKLE RANDALL J DONOR	1.00
59	WILES JOHN S	1.00	359	WINDY HILLS	1.00	659	HICKLE RANDALL J DONOR	1.00
60	WILES JOHN S	1.00	360	WINDY HILLS	1.00	660	HICKLE RANDALL J DONOR	1.00
61	WILES JOHN S	1.00	361	WINDY HILLS	1.00	661	HICKLE RANDALL J DONOR	1.00
62	WILES JOHN S	1.00	362	WINDY HILLS	1.00	662	HICKLE RANDALL J DONOR	1.00
63	WILES JOHN S	1.00	363	WINDY HILLS	1.00	663	HICKLE RANDALL J DONOR	1.00
64	WILES JOHN S	1.00	364	WINDY HILLS	1.00	664	HICKLE RANDALL J DONOR	1.00
65	WILES JOHN S	1.00	365	WINDY HILLS	1.00	665	HICKLE RANDALL J DONOR	1.00
66	WILES JOHN S	1.00	366	WINDY HILLS	1.00	666	HICKLE RANDALL J DONOR	1.00
67	WILES JOHN S	1.00	367	WINDY HILLS	1.00	667	HICKLE RANDALL J DONOR	1.00
68	WILES JOHN S	1.00	368	WINDY HILLS	1.00	668	HICKLE RANDALL J DONOR	1.00
69	WILES JOHN S	1.00	369	WINDY HILLS	1.00	669	HICKLE RANDALL J DONOR	1.00
70	WILES JOHN S	1.00	370	WINDY HILLS	1.00	670	HICKLE RANDALL J DONOR	1.00
71	WILES JOHN S	1.00	371	WINDY HILLS	1.00	671	HICKLE RANDALL J DONOR	1.00
72	WILES JOHN S	1.00	372	WINDY HILLS	1.00	672	HICKLE RANDALL J DONOR	1.00
73	WILES JOHN S	1.00	373	WINDY HILLS	1.00	673	HICKLE RANDALL J DONOR	1.00
74	WILES JOHN S	1.00	374	WINDY HILLS	1.00	674	HICKLE RANDALL J DONOR	1.00
75	WILES JOHN S	1.00	375	WINDY HILLS	1.00	675	HICKLE RANDALL J DONOR	1.00
76	WILES JOHN S	1.00	376	WINDY HILLS	1.00	676	HICKLE RANDALL J DONOR	1.00
77	WILES JOHN S	1.00	377	WINDY HILLS	1.00	677	HICKLE RANDALL J DONOR	1.00
78	WILES JOHN S	1.00	378	WINDY HILLS	1.00	678	HICKLE RANDALL J DONOR	1.00
79	WILES JOHN S	1.00	379	WINDY HILLS	1.00	679	HICKLE RANDALL J DONOR	1.00
80	WILES JOHN S	1.00	380	WINDY HILLS	1.00	680	HICKLE RANDALL J DONOR	1.00
81	WILES JOHN S	1.00	381	WINDY HILLS	1.00	681	HICKLE RANDALL J DONOR	1.00
82	WILES JOHN S	1.00	382	WINDY HILLS	1.00	682	HICKLE RANDALL J DONOR	1.00
83	WILES JOHN S	1.00	383	WINDY HILLS	1.00	683	HICKLE RANDALL J DONOR	1.00
84	WILES JOHN S	1.00	384	WINDY HILLS	1.00	684	HICKLE RANDALL J DONOR	1.00
85	WILES JOHN S	1.00	385	WINDY HILLS	1.00	685	HICKLE RANDALL J DONOR	1.00
86	WILES JOHN S	1.00	386	WINDY HILLS	1.00	686	HICKLE RANDALL J DONOR	1.00
87	WILES JOHN S	1.00	387	WINDY HILLS	1.00	687	HICKLE RANDALL J DONOR	1.00
88	WILES JOHN S	1.00	388	WINDY HILLS	1.00	688	HICKLE RANDALL J DONOR	1.00
89	WILES JOHN S	1.00	389	WINDY HILLS	1.00	689	HICKLE RANDALL J DONOR	1.00
90	WILES JOHN S	1.00	390	WINDY HILLS	1.00	690	HICKLE RANDALL J DONOR	1.00
91	WILES JOHN S	1.00	391	WINDY HILLS	1.00	691	HICKLE RANDALL J DONOR	1.00
92	WILES JOHN S	1.00	392	WINDY HILLS	1.00	692	HICKLE RANDALL J DONOR	1.00
93	WILES JOHN S	1.00	393	WINDY HILLS	1.00	693	HICKLE RANDALL J DONOR	1.00
94	WILES JOHN S	1.00	394	WINDY HILLS	1.00	694	HICKLE RANDALL J DONOR	1.00
95	WILES JOHN S	1.00	395	WINDY HILLS	1.00	695	HICKLE RANDALL J DONOR	1.00
96	WILES JOHN S	1.00	396	WINDY HILLS	1.00	696	HICKLE RANDALL J DONOR	1.00
97	WILES JOHN S	1.00	397	WINDY HILLS	1.00	697	HICKLE RANDALL J DONOR	1.00
98	WILES JOHN S	1.00	398	WINDY HILLS	1.00	698	HICKLE RANDALL J DONOR	1.00
99	WILES JOHN S	1.00	399	WINDY HILLS	1.00	699	HICKLE RANDALL J DONOR	1.00
100	WILES JOHN S	1.00	400	WINDY HILLS	1.00	700	HICKLE RANDALL J DONOR	1.00

Legend

- Private (Light Yellow)
- State Lands (Light Blue)
- Forest Service (Light Green)
- Bureau of Land Management (Orange)
- National Park Service (Grey)
- Other Federal Land (Dark Orange)
- Fish and Wildlife Service (Teal)
- Local Govt (Light Grey)
- Native American (Orange)
- MFWP - WMA (Light Blue)
- Lake/Reservoir (Dark Blue)
- Interstate Highway (Thick Black Line)
- Secondary Highway (Thin Black Line)
- Highway (Dashed Black Line)
- Road (Thin Grey Line)
- Primitive Road (Dashed Grey Line)
- River (Blue Line)
- Stream/Creek (Blue Line)
- Intermittent Creek (Dashed Blue Line)
- Township (Green Line)
- County Border (Black Line)
- Fish Wildlife & Parks Wildlife Management Area (Green Line)

NOTES
Not all legends may appear on this map.
Features shown on this map do not constitute a warranty of accuracy or a representation of ownership. The Montana Department of Fish, Wildlife & Parks does not warrant the accuracy of the data contained in this map and assumes no responsibility for the usability of these data for a particular purpose. These agencies will not be liable for any damages incurred as a result of errors displayed here. The ownership boundaries displayed on this map are not based on land survey data and are not suitable for the property market. This map displays public and private land ownership information derived from several sources and continues to be corrected and updated.



SOURCES / ACKNOWLEDGEMENTS
This map was produced as a joint effort between the MT Dept. of Fish, Wildlife, and Parks (FWP) and the Montana Natural Resource Information System (NRS) of the Montana Department of Administration (DOA). The Montana Department of Administration (DOA) and private enterprise. Lands depicted on this map represent single ownership of contiguous parcels that are at least 40 acres in size. The DOA maintains the GIS cadastral layer and the NRS maintains the private ownership information.
The public land data from the MT Natural Resource Information System (NRS) was originally digitized by the Bureau of Land Management (BLM) from a 1:100,000 scale BLM Surface Management Data map. Additional data was collected from the BLM, the Montana Department of Administration (DOA), and private enterprise. Lands depicted on this map represent single ownership of contiguous parcels that are at least 40 acres in size. The DOA maintains the GIS cadastral layer and the NRS maintains the private ownership information.
The base scale for the public ownership data is 1:100,000. Though many of the private ownership data are digitized from 1:24,000 scale or survey data. Private ownership data is accurate to a scale of 1:30,000 or better.
Map produced September 2007 with ownership data current as of August 2007.

USGS 100,000 Scale Quadrangle Index

8110	8115	8120	8125	8130	8135	8140	8145	8150	8155	8160	8165	8170	8175	8180	8185	8190	8195	8200
8110	8115	8120	8125	8130	8135	8140	8145	8150	8155	8160	8165	8170	8175	8180	8185	8190	8195	8200
8110	8115	8120	8125	8130	8135	8140	8145	8150	8155	8160	8165	8170	8175	8180	8185	8190	8195	8200
8110	8115	8120	8125	8130	8135	8140	8145	8150	8155	8160	8165	8170	8175	8180	8185	8190	8195	8200
8110	8115	8120	8125	8130	8135	8140	8145	8150	8155	8160	8165	8170	8175	8180	8185	8190	8195	8200
8110	8115	8120	8125	8130	8135	8140	8145	8150	8155	8160	8165	8170	8175	8180	8185	8190	8195	8200
8110	8115	8120	8125	8130	8135	8140	8145	8150	8155	8160	8165	8170	8175	8180	8185	8190	8195	8200
8110	8115	8120	8125	8130	8135	8140	8145	8150	8155	8160	8165	8170	8175	8180	8185	8190	8195	8200
8110	8115	8120	8125	8130	8135	8140	8145	8150	8155	8160	8165	8170	8175	8180	8185	8190	8195	8200
8110	8115	8120	8125	8130	8135	8140	8145	8150	8155	8160	8165	8170	8175	8180	8185	8190	8195	8200</