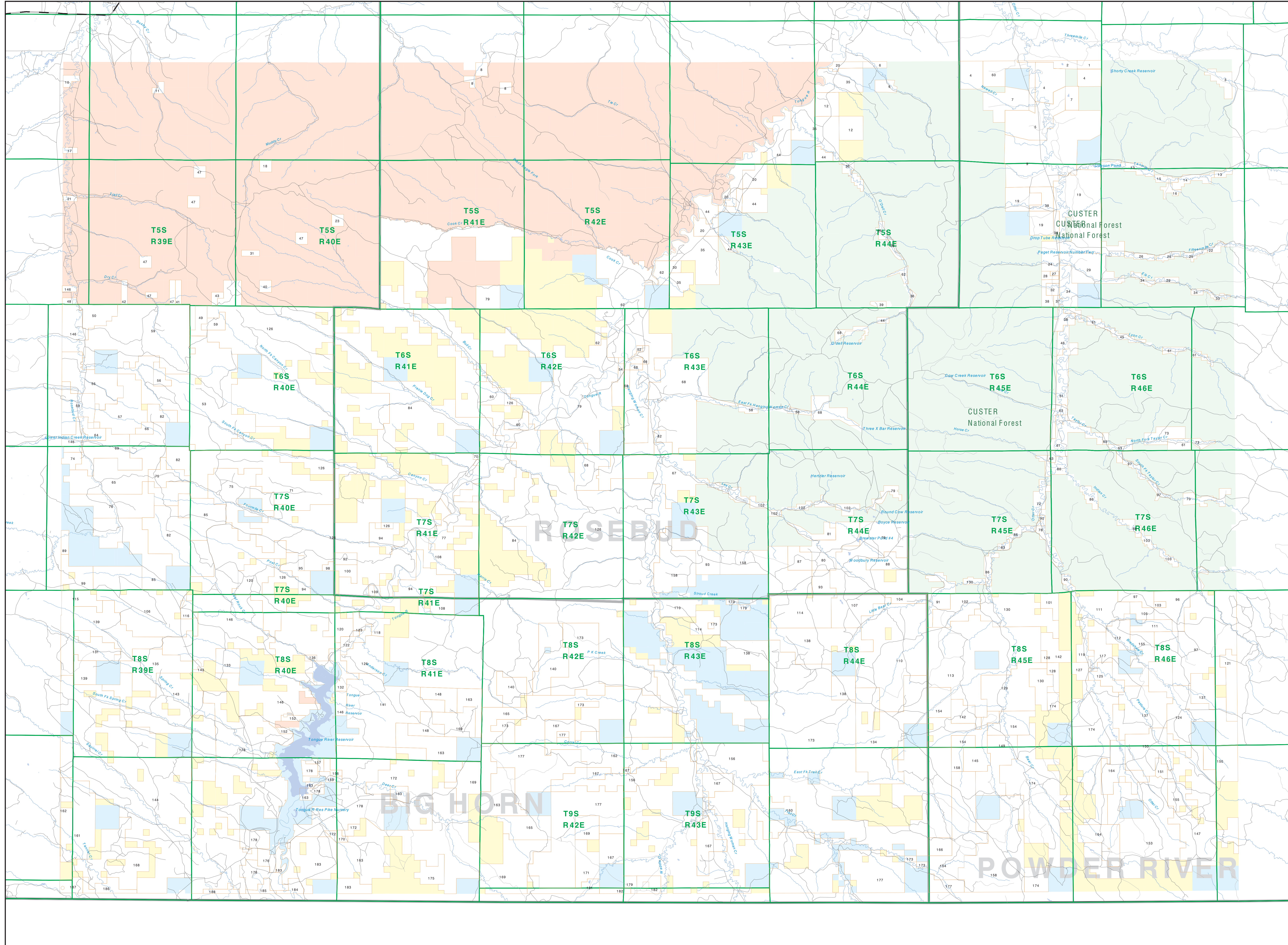


Private Land Ownership Identification BIRNEY - (45106a)

1. BATES BRYAN M. 225
2. STEVENS KEITH P. P. INC. 209
3. TRINIS, HE. 461
4. GREAT NORTHERN PROPERTIES. 2295
5. COPRA LOUIS P. 196
6. MCELROY GLEN E. 417
7. GARVALI LIVESTOCK A JOINT VENT. 1029
8. SMALL FRES. 457
9. GIBSON ROSE FAY ROBERT DE. 2081
10. ALEXANDER PHILIP P. 141
11. U S A N TRUST FOR SPANG MAXIM. 120
12. ANDRUCKA JACK. 1371
13. NEWCOMER BLAINE. 793
14. TRISLER C. JACQUES. 276
15. GOODWIN JAMES F. CONY A. 165
16. WAIN CHRISTI ESTER. 181
17. LAVERNE KERNEE ESTATE IN TRUS. 97
18. HOWLAND RICHARD. 763
19. BRUM CREEK CATTLE COMPANY LLC. 6322
20. GREAT NORTHERN PROP LTD P. 1541
21. SMALL BEULAH S. 202
22. FORTNER TW. GAYLENE S. 190
23. BOYD DANIEL W. 100
24. DUNNING DOUG LEE DENNIS. 555
25. SMITH DANIEL W. 100
26. DUNNING IRVIN D. 202
27. SPRING CREEK LEE. 63
28. PAULY BRADLEY JOSEPH. 117
29. DUNNING IRVIN DEE. 192
30. WELLS ARTHUR J. JR. 153
31. MANGS WILLIAM D. 100
32. SMALL GREENLEE. 789
33. DUNNING DOUG LEE TRUSTEE. 130
34. DUNNING DOUG LEE. 1995
35. KROBACH JACK. 507
36. BULL RANCH ANONY CORP. 809
37. KORN DANLAD DUNNING STEVEN. 100
38. BULL RANCH ANONY CORP. 809
39. HAYES JOSEPH P. 102
40. SPITZER DAVID DANIEL SCHULLER. 160
41. PARKER LOUISE EASTMAN. 162
42. U S A N TRUST FOR SMALL JOHN. 162
43. SMALL JOHN W. 81
44. WANGS CATTLE CO. 378
45. SMALL JOHN W. 134
46. FLETCHER RICHARD L. 312
47. SMALL JOHN W. 482
48. EASTMAN WILHELMINE. 155
49. STEVENSON BILL. 450
50. JONES BROTHERS LIVESTOCK CO. 834
51. JONES BROTHERS RANCH INC. 500
52. VALENTINE CHRISTINE S. 42
53. JORDAN RANCHES TO PARTNERSHIP. 709
54. CARROLL JOHN S. 82
55. FERGUSON DWIGHT S. 291
56. ANTHONY ESTILLAN RECORDER. 202
57. FERGUSON DWIGHT S. 292
58. JONES BROTHERS RANCH INC. 500
59. JONES BROS LIVESTOCK CO. 784
60. CROWNING CAVAL COMPANY. 202
61. STEVENSON WILLIAM C. 179
62. MANDERSON WILLIAM. 190
63. CIRCLE BAR CATTLE COMPANY LLC. 737
64. JOHN HOUSTON. 81
65. MELVYN LUCILE E TRUSTEE. 3665
66. MELVYN LUCILE TRUST. 109
67. WANGS CATTLE CO. 378
68. BONES BROTHERS RANCH. 802
69. MELVYN LUCILE TRUSTEE. 1997
70. JOHN ALICE BIRDECKA. 43
71. BULL RANCH ANONY CORP. 809
72. HAGEN AUGUSTUS FRANKLIN. 395
73. HORN JOHN A. 482
74. MURRAY JACK W. TRUSTEE. 287
75. LUTHER ELLEN. 2948
76. LANKAM GEORGE W. MRS. 2009
77. CARROLL NANCY W. REVOCABLE TRUST. 1186
78. QUARTER CIRCLE W RANCH CO. 21985
80. STEVEN MARY SUZANNE. 140
81. BROOKER MARLEN LONCH. 440
82. BOST LORIAN TRUSTEE. 402
83. GOODWIN JAMES M. HOWARD F. 89
84. BECKER DANIEL CO. 2007
85. BIRD BEND RANCH. 4335
86. JONES BROTHERS RANCH SUPPLY. 1489
87. NOTIS SUZANNE STEVENSON. 505
88. LITTLE BEAR LIVESTOCK COMPANY. 619
89. NOTIEMAR. 110
90. FLETCHER MERLE F. MARGARET F. 235
91. CARSON CHARLES F. RANNEY F. 804
92. HAHN LIBERTY. 304
93. NOTIEMAR. 110
94. S. F. LAND CO. INC. 3558
95. KRAFT DANIEL M. 103
96. KRAFT DANIEL M. 1132
97. C. RANCHLAND COMPANY LLC. 517
98. RENICO AUGUSTE. 100
99. NOTIEMAR. 110
100. SCHULTZ ROBERT D. 317
101. MOELLER STEVEN W. MITA COSBY. 282
102. ROYER STEPHAN C. TRUSTEE. 1810
103. KRAT DANIEL M. EVELYN M. 403
104. CARSON CHARLES F. 294
105. MARDOK BOB ROBERTE TRUSTEE. 365
106. NOTIEMAR. 110
107. BOYCE INC. 1524
108. BOST LORIAN. 402
109. SMALL JOHN W. 74
110. NOTIEMAR. 110
111. COSSITT MARG. MADONE HAACK. 2324
112. COSSITT LINDA. 890
113. GOODWIN JAMES F. A. TRUSTEE. 1910
114. ET CATTLE CO. LLC. 2961
115. HAMILTON JAMES S. A. TRUSTEE. 1034
116. RICE PAUL J. 270
117. BERRY WILFRED E. ESTATE. 691
118. MOSEBRAE WILLIAM R. 354
119. MOODY CHRISTINE. MATTHEW E. 320
120. LONK WILLIAM. 2920
121. FULLER RANCH. 300
122. PARKMOUNT. 102
123. PARKMOUNT. 102
124. MARTIN VAKA. 3648
125. MONROE JOHN C. CONNOR. 150
126. DUNNING DOUG LEE PROPERTIES LLC. 7807
127. MOODY THOMAS W. PHILLIS C. TRU. 310
128. BOYD DANIEL M. EVELYN M. 403
129. NOTIEMAR. 110
130. JONES BROTHERS RANCH INC. 500
131. DAVIS JACQUELINE M. 407
132. PARKMOUNT. 102
133. TAYLOR WALTER J. JR. 648
134. LUTHER ELLEN. 2948
135. RESOURCE DEVELOPMENT CO. INC. 1994
136. HARKLEY JAMES E. 78
137. BRYAN CHRISTOPHER RINGS ALPHAMAY. 3277
138. POWELL CATTLE CO. 478
139. YOUNG JOHN. 2112
140. PARKER FRANCES CAROLINE REV TR. 2892
141. YOUNG JOHN. 2112
142. ANDY MARY VET. 1278
143. SERRANO ALBERTO. 514
144. MORROW MARY. A. TRUSTEE. 2391
145. CONSOLIDATION COAL COMPANY. 19667
146. LUTHER ELLEN. 2948
147. MONYARD. 2025
148. FULLER RANCH. 300
149. LOT ROBERT W. 1319
150. POWERS DENVA TRUSTEE. 1717
151. POWERS DENVA TRUST. 125 W. AV. 1212
152. BOW INVESTMENTS INC. 222
153. NORTHERN CHESTERFIELD. 212
154. SCHAEFER ENTERPRISES LLC. 812
155. DECKER GORDON L. OYER DONALD. 3915
156. HENNINGSON CATTLE CO. LLC. 5299
157. HARMON HENRICK. 142
158. HOFF FULM. HARMON TRUST. 237
159. LUTHER ELLEN. 2948
160. PARKER STEVEN ERNST. 510
161. JAMES SERRANO. 214
162. PADLOCK RANCH COMPANY. 2394
163. RANCHOHOLM CATTLE CO PARTNERSHIP. 11911
164. MORROW MARY. A. TRUSTEE. 2391
165. POWERS THOMAS. LEE ANH. 489
166. PADLOCK RANCH CO. 3491
167. CHEVON USA INC. 2871
168. PORTER W. 882
169. U S A BUREAU OF LAND MANAGEMENT. 109
170. HOLLER DANIEL. 992
171. MONTANA RANCH CO LTD. 3307
172. GUERDIO JAMES W. 29996
173. BULL RANCH. 1950
174. COX ANNY. 641
175. MOUNTAIN PEAKS INC. 347
176. PADLOCK RANCH CO INC. 29112
177. RANCHOHOLM CATTLE COMPANY. 2394
178. KRUEBER W. P. JR. 218
179. ODEE PHIL. 137
180. PORTER W. 827
181. HOLLER DANIEL. 992
182. SEVEN BROTHERS RANCHES INC. 270
183. CORNER LARRY. 236
184. WELLS ARTHUR J. JR. 153
187. CHEVON USA INC. 300
188. DECKER CAROLYN PATRICK. 172



Legend for land ownership and features:

- Private
- Forest Service
- Bureau of Land Management
- National Park Service
- Other Federal Land
- Fish and Wildlife Service
- State Lands
- Local Govt
- Native American
- MFWP - WMA
- Lake/Reservoir
- Interstate
- Secondary Highway
- Highway
- Road
- Primitive Road
- River
- Stream/Creek
- Intermittent Creek
- Township
- County Border
- Fish Wildlife & Parks
- Wildlife Management Area

NOTES:
Not all legend items may appear on this map.
Features shown on this map do not imply public access to any lands.
The land status data displayed on this map may not be complete and may contain errors in boundary locations and/or coding.
DISCLAIMERS:
The MT Natural Heritage Program, MT State Library, MT Dept of Administration and MT Dept of Revenue make no representations or warranties whatsoever with respect to the accuracy or completeness of the data contained in these maps and assumes no responsibility for the suitability of these data for a particular purpose. These agencies will not be liable for any damages incurred as a result of errors displayed here. The ownership boundaries displayed on this map are not based on land survey data and are not a substitute for property surveys. This map displays public and private land ownership information derived from several sources and continues to be corrected and updated.

SOURCES / ACKNOWLEDGEMENTS
This map was produced as a joint effort between the MT Dept. of Fish, Wildlife and Parks (FWP) and the Montana Natural Resource Information System (MNRIS) of the MT State Library, in response to Montana Code Annotated 7-3-509, which directs the FWP to "...work cooperatively with all state and federal land management agencies...to develop accurate land ownership maps...in the State". The public land data is from the MT Natural Heritage Program land stewardship data collection. Much of the data was originally digitized by the Bureau of Land Management (BLM) from 1:100,000 scale BLM Surface Management System maps. Additional information, corrections and updates were provided by the BLM and private land management agencies. Lands depicted on this map represent single ownership of contiguous parcels that are at least 40 acres in size. The DDA maintains the GIS cadastral layer and the DOR maintains the private ownership information.
The base scale for the public ownership data is 1:100,000. Though many of the recent edits incorporate data digitized from 1:24,000 scale maps or survey data, private ownership data is accurate to scales of 1:24,000 or smaller.
Map produced September 2007 with ownership data current as of August 2007.

USGS 100,000 Scale Quadrangle Index

8100	8110	8120	8130	8140	8150	8160	8170	8180	8190	8200
8150	8154	8158	8162	8166	8170	8174	8178	8182	8186	8190
8150	8154	8158	8162	8166	8170	8174	8178	8182	8186	8190
8150	8154	8158	8162	8166	8170	8174	8178	8182	8186	8190
8150	8154	8158	8162	8166	8170	8174	8178	8182	8186	8190
8150	8154	8158	8162	8166	8170	8174	8178	8182	8186	8190
8150	8154	8158	8162	8166	8170	8174	8178	8182	8186	8190
8150	8154	8158	8162	8166	8170	8174	8178	8182	8186	8190
8150	8154	8158	8162	8166	8170	8174	8178	8182	8186	8190
8150	8154	8158	8162	8166	8170	8174	8178	8182	8186	8190
8150	8154	8158	8162	8166	8170	8174	8178	8182	8186	8190
8150	8154	8158	8162	8166	8170	8174	8178	8182	8186	8190
8150	8154	8158	8162	8166	8170	8174	8178	8182	8186	8190
8150	8154	8158	8162	8166	8170	8174	8178	8182	8186	8190
8150	8154	8158	8162	8166	8170	8174	8178	8182	8186	8190
8150	8154	8158	8162	8166	8170	8174	8178	8182	8186	8190
8150	8154	8158	8162	8166	8170	8174	8178	8182	8186	8190
8150	8154	8158	8162	8166	8170	8174	8178	8182	8186	8190
8150	8154	8158	8162	8166	8170	8174	8178	8182	8186	8190
8150	8154	8158	8162	8166	8170	8174	8178	8182	8186	8190