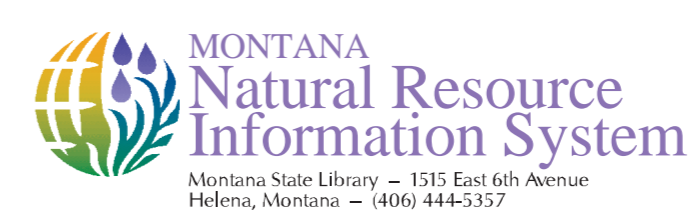
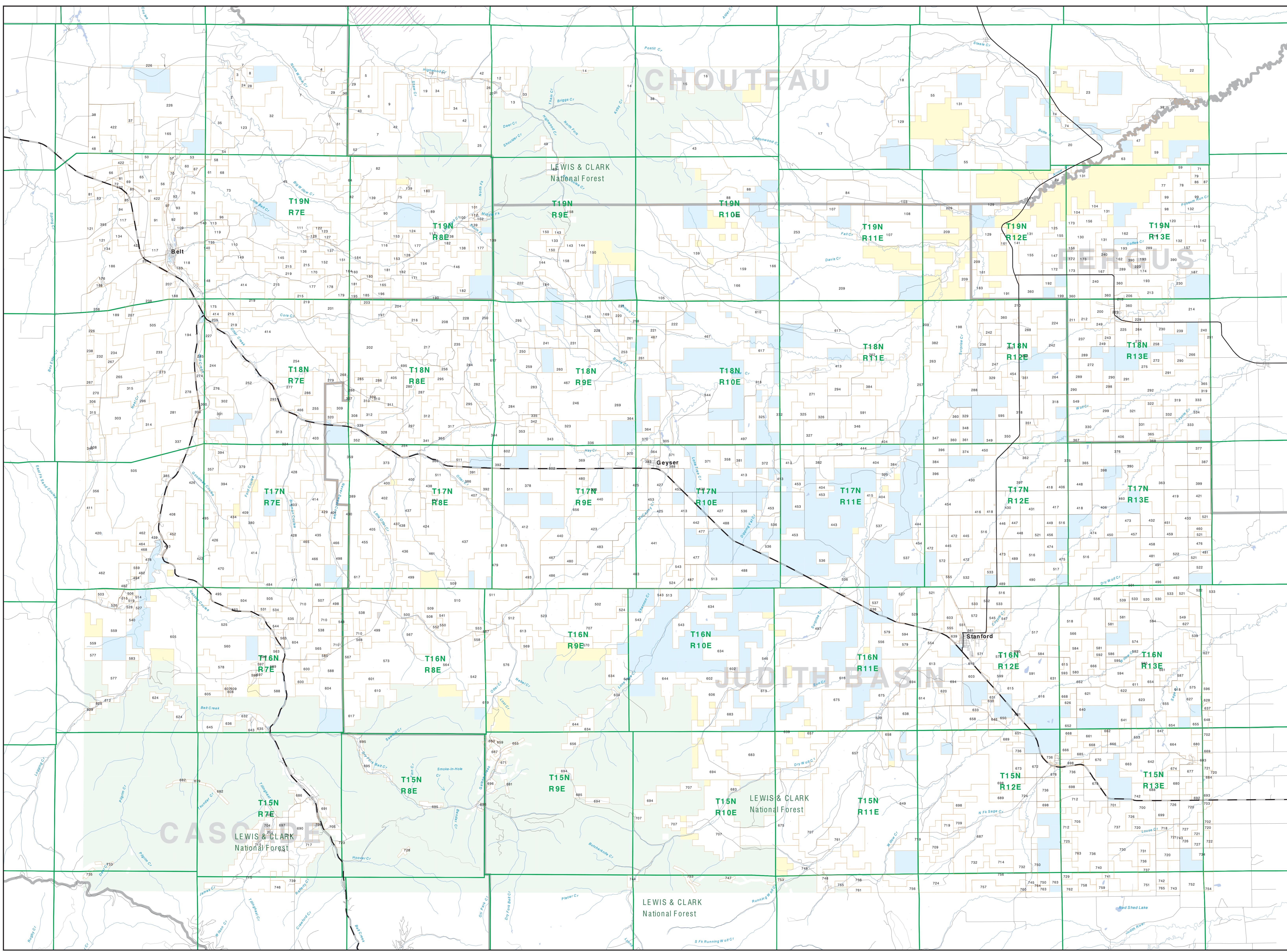




# Private Land Ownership Identification BELT - (47110a)



Parcel Name, Owner Name, Total Acres



- Road
- State Lands
- Forest Service
- Bureau of Land Management
- National Park Service
- Other Federal Land
- Fish and Wildlife Service
- Local Govt
- Native American
- MFWP - WMA
- Lake/Reservoir
- Interstate
- County Boundary
- Fish Wildlife & Parks Wildlife Management Area
- Primitive Road
- Intermittent Creek
- Stream/Creek
- Wilderness
- Highway

**NOTES:** Not all legend items may appear on this map. Features shown on this map do not imply public access to any lands. The land status is depicted on this map based on the most current available information. The Montana Department of Fish, Wildlife & Parks does not warrant whatsoever with respect to the accuracy or completeness of the data contained therein and assumes no responsibility for the suitability of these data for a particular use. These legends may contain errors in boundary locations and/or coding.

**SOURCES & ACKNOWLEDGMENTS:** The private land data were developed for the Montana Caspasia Database Project. These data were produced through a cooperative arrangement between the Montana Department of Administration (DMA), the Montana Department of Revenue (DOR), the Montana Department of Fish, Wildlife & Parks (MFWP), and the Montana Department of Transportation (MDT). The DMA maintains the GIS database and the DOR maintains the private ownership information.

The public land data from the MT Natural Heritage Program and ownership data collection. Much of the data was originally digitized by the Bureau of Land Management (BLM) from 1:50,000 scale maps. These legends may contain errors in boundary locations and/or coding. Additional information, corrections and updates (especially for rural lands) are available on the map display. These legends may contain errors in boundary locations and/or coding. Any data from 1996-1998. Since 1998, the Montana Natural Heritage Program has been updating its data with the Montana Department of Fish, Wildlife & Parks. Montana Fish, Wildlife & Parks Areas, US Fish & Wildlife Service Areas, and contract agreements. These areas have been updated against the various public agencies and land trusts, and have been verified against county or Montana Department of Revenue records.

The base scale for the public ownership data is 1:50,000. Roughly many of the parcels shown on this map are 160 acres or larger. Many parcels are smaller than 100 acres. The DMA maintains the GIS database and the DOR maintains the private ownership information.

This map was produced on September 2007 with ownership data current as of August 2007.

4710	4711	4712	4713	4714	4715	4716	4717	4718	4719	4720
4710	4711	4712	4713	4714	4715	4716	4717	4718	4719	4720
4710	4711	4712	4713	4714	4715	4716	4717	4718	4719	4720
4710	4711	4712	4713	4714	4715	4716	4717	4718	4719	4720
4710	4711	4712	4713	4714	4715	4716	4717	4718	4719	4720