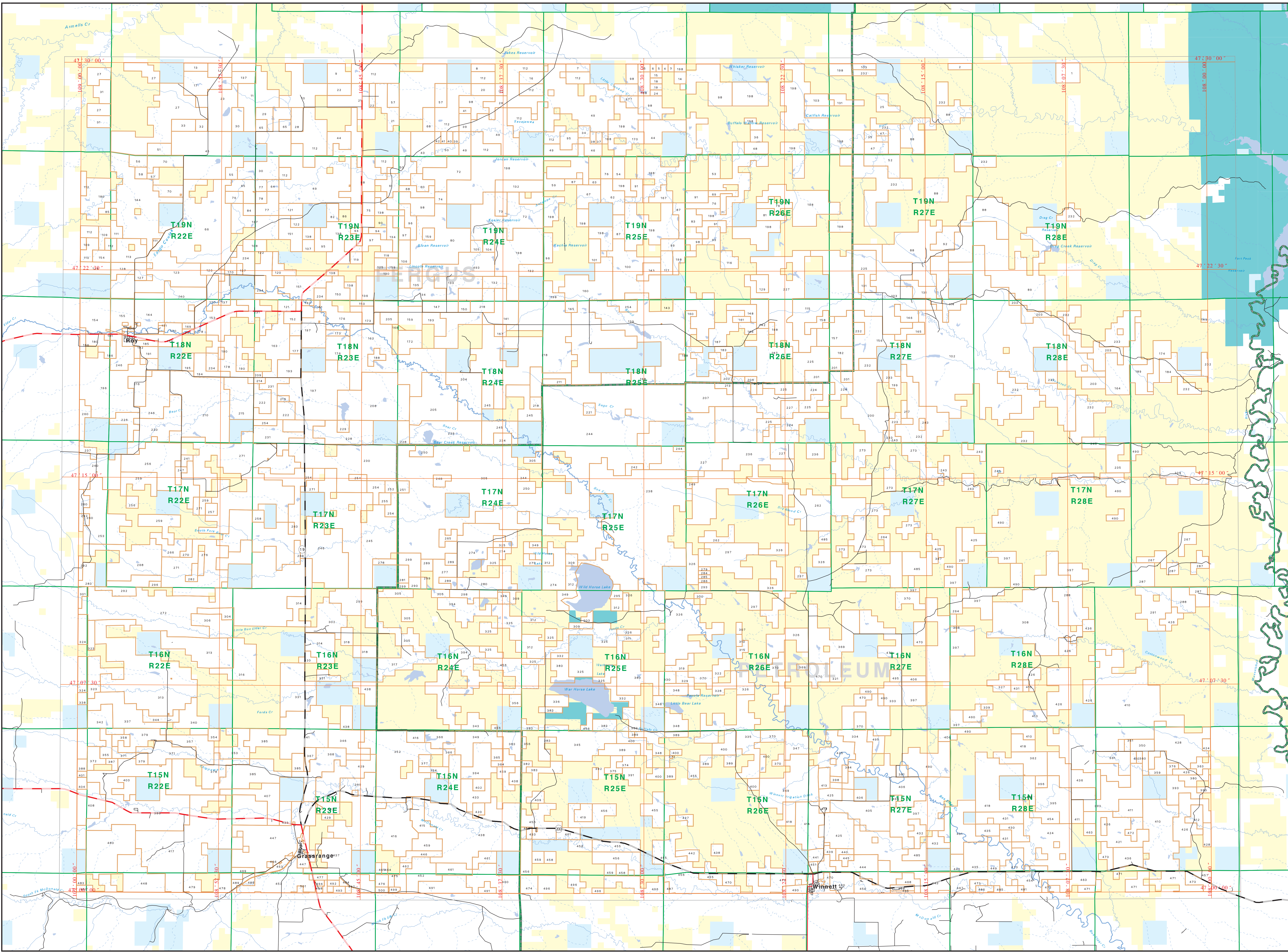
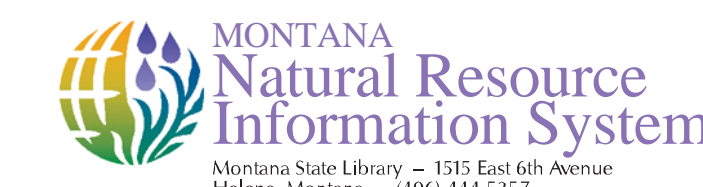




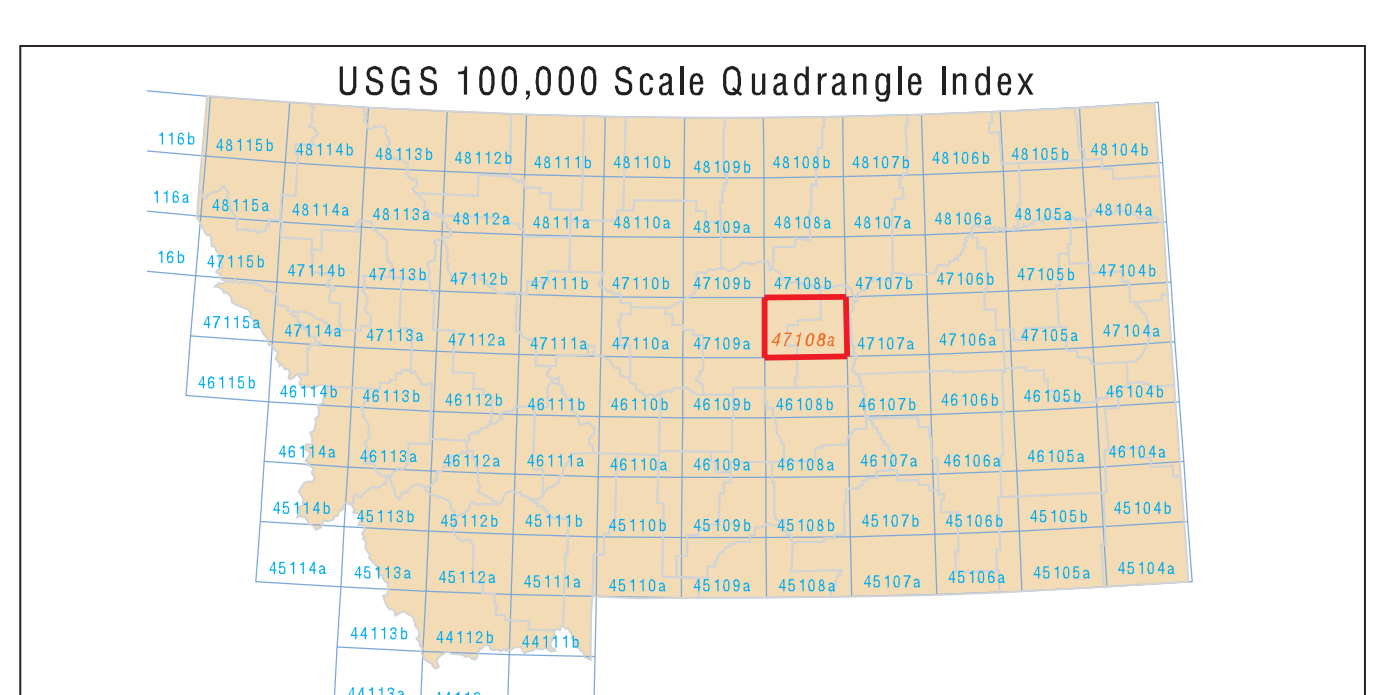
# Private Land Ownership Identification WINNETT - (47108a)



Private Land Owners, Total Acres

1. MONTANA NATURAL RESOURCE INFORMATION SYSTEM
2. MONTANA NATURAL RESOURCE INFORMATION SYSTEM
3. MONTANA NATURAL RESOURCE INFORMATION SYSTEM
4. MONTANA NATURAL RESOURCE INFORMATION SYSTEM
5. MONTANA NATURAL RESOURCE INFORMATION SYSTEM
6. MONTANA NATURAL RESOURCE INFORMATION SYSTEM
7. MONTANA NATURAL RESOURCE INFORMATION SYSTEM
8. MONTANA NATURAL RESOURCE INFORMATION SYSTEM
9. MONTANA NATURAL RESOURCE INFORMATION SYSTEM
10. MONTANA NATURAL RESOURCE INFORMATION SYSTEM
11. MONTANA NATURAL RESOURCE INFORMATION SYSTEM
12. MONTANA NATURAL RESOURCE INFORMATION SYSTEM
13. MONTANA NATURAL RESOURCE INFORMATION SYSTEM
14. MONTANA NATURAL RESOURCE INFORMATION SYSTEM
15. MONTANA NATURAL RESOURCE INFORMATION SYSTEM
16. MONTANA NATURAL RESOURCE INFORMATION SYSTEM
17. MONTANA NATURAL RESOURCE INFORMATION SYSTEM
18. MONTANA NATURAL RESOURCE INFORMATION SYSTEM
19. MONTANA NATURAL RESOURCE INFORMATION SYSTEM
20. MONTANA NATURAL RESOURCE INFORMATION SYSTEM
21. MONTANA NATURAL RESOURCE INFORMATION SYSTEM
22. MONTANA NATURAL RESOURCE INFORMATION SYSTEM
23. MONTANA NATURAL RESOURCE INFORMATION SYSTEM
24. MONTANA NATURAL RESOURCE INFORMATION SYSTEM
25. MONTANA NATURAL RESOURCE INFORMATION SYSTEM
26. MONTANA NATURAL RESOURCE INFORMATION SYSTEM
27. MONTANA NATURAL RESOURCE INFORMATION SYSTEM
28. MONTANA NATURAL RESOURCE INFORMATION SYSTEM
29. MONTANA NATURAL RESOURCE INFORMATION SYSTEM
30. MONTANA NATURAL RESOURCE INFORMATION SYSTEM
31. MONTANA NATURAL RESOURCE INFORMATION SYSTEM
32. MONTANA NATURAL RESOURCE INFORMATION SYSTEM
33. MONTANA NATURAL RESOURCE INFORMATION SYSTEM
34. MONTANA NATURAL RESOURCE INFORMATION SYSTEM
35. MONTANA NATURAL RESOURCE INFORMATION SYSTEM
36. MONTANA NATURAL RESOURCE INFORMATION SYSTEM
37. MONTANA NATURAL RESOURCE INFORMATION SYSTEM
38. MONTANA NATURAL RESOURCE INFORMATION SYSTEM
39. MONTANA NATURAL RESOURCE INFORMATION SYSTEM
40. MONTANA NATURAL RESOURCE INFORMATION SYSTEM
41. MONTANA NATURAL RESOURCE INFORMATION SYSTEM
42. MONTANA NATURAL RESOURCE INFORMATION SYSTEM
43. MONTANA NATURAL RESOURCE INFORMATION SYSTEM
44. MONTANA NATURAL RESOURCE INFORMATION SYSTEM
45. MONTANA NATURAL RESOURCE INFORMATION SYSTEM
46. MONTANA NATURAL RESOURCE INFORMATION SYSTEM
47. MONTANA NATURAL RESOURCE INFORMATION SYSTEM
48. MONTANA NATURAL RESOURCE INFORMATION SYSTEM
49. MONTANA NATURAL RESOURCE INFORMATION SYSTEM
50. MONTANA NATURAL RESOURCE INFORMATION SYSTEM
51. MONTANA NATURAL RESOURCE INFORMATION SYSTEM
52. MONTANA NATURAL RESOURCE INFORMATION SYSTEM
53. MONTANA NATURAL RESOURCE INFORMATION SYSTEM
54. MONTANA NATURAL RESOURCE INFORMATION SYSTEM
55. MONTANA NATURAL RESOURCE INFORMATION SYSTEM
56. MONTANA NATURAL RESOURCE INFORMATION SYSTEM
57. MONTANA NATURAL RESOURCE INFORMATION SYSTEM
58. MONTANA NATURAL RESOURCE INFORMATION SYSTEM
59. MONTANA NATURAL RESOURCE INFORMATION SYSTEM
60. MONTANA NATURAL RESOURCE INFORMATION SYSTEM
61. MONTANA NATURAL RESOURCE INFORMATION SYSTEM
62. MONTANA NATURAL RESOURCE INFORMATION SYSTEM
63. MONTANA NATURAL RESOURCE INFORMATION SYSTEM
64. MONTANA NATURAL RESOURCE INFORMATION SYSTEM
65. MONTANA NATURAL RESOURCE INFORMATION SYSTEM
66. MONTANA NATURAL RESOURCE INFORMATION SYSTEM
67. MONTANA NATURAL RESOURCE INFORMATION SYSTEM
68. MONTANA NATURAL RESOURCE INFORMATION SYSTEM
69. MONTANA NATURAL RESOURCE INFORMATION SYSTEM
70. MONTANA NATURAL RESOURCE INFORMATION SYSTEM
71. MONTANA NATURAL RESOURCE INFORMATION SYSTEM
72. MONTANA NATURAL RESOURCE INFORMATION SYSTEM
73. MONTANA NATURAL RESOURCE INFORMATION SYSTEM
74. MONTANA NATURAL RESOURCE INFORMATION SYSTEM
75. MONTANA NATURAL RESOURCE INFORMATION SYSTEM
76. MONTANA NATURAL RESOURCE INFORMATION SYSTEM
77. MONTANA NATURAL RESOURCE INFORMATION SYSTEM
78. MONTANA NATURAL RESOURCE INFORMATION SYSTEM
79. MONTANA NATURAL RESOURCE INFORMATION SYSTEM
80. MONTANA NATURAL RESOURCE INFORMATION SYSTEM
81. MONTANA NATURAL RESOURCE INFORMATION SYSTEM
82. MONTANA NATURAL RESOURCE INFORMATION SYSTEM
83. MONTANA NATURAL RESOURCE INFORMATION SYSTEM
84. MONTANA NATURAL RESOURCE INFORMATION SYSTEM
85. MONTANA NATURAL RESOURCE INFORMATION SYSTEM
86. MONTANA NATURAL RESOURCE INFORMATION SYSTEM
87. MONTANA NATURAL RESOURCE INFORMATION SYSTEM
88. MONTANA NATURAL RESOURCE INFORMATION SYSTEM
89. MONTANA NATURAL RESOURCE INFORMATION SYSTEM
90. MONTANA NATURAL RESOURCE INFORMATION SYSTEM
91. MONTANA NATURAL RESOURCE INFORMATION SYSTEM
92. MONTANA NATURAL RESOURCE INFORMATION SYSTEM
93. MONTANA NATURAL RESOURCE INFORMATION SYSTEM
94. MONTANA NATURAL RESOURCE INFORMATION SYSTEM
95. MONTANA NATURAL RESOURCE INFORMATION SYSTEM
96. MONTANA NATURAL RESOURCE INFORMATION SYSTEM
97. MONTANA NATURAL RESOURCE INFORMATION SYSTEM
98. MONTANA NATURAL RESOURCE INFORMATION SYSTEM
99. MONTANA NATURAL RESOURCE INFORMATION SYSTEM
100. MONTANA NATURAL RESOURCE INFORMATION SYSTEM

Scale of Miles



**Legend**

- Private
- State Lands
- Local Road
- River
- Forest Service
- Local Govt
- Stream/Creek
- Bureau of Land Management
- Native American
- Intermittent Creek
- National Park Service
- Lake/Reservoir
- Other Federal Land
- Intestate
- County Border
- Fish and Wildlife Service
- State Primary
- State Secondary
- Fish Wildlife & Parks
- Wildlife Management Area

**NOTES:**

This map was prepared as a joint effort between the MT Dept. of Fish, Wildlife, and Parks (DFWP) and the Montana Natural Resource Information System (MNRIS). The data was derived from the MNRIS database and is subject to change. The MNRIS database is updated quarterly. The data was prepared as a joint effort between the MT Dept. of Fish, Wildlife, and Parks (DFWP) and the Montana Natural Resource Information System (MNRIS). The data was derived from the MNRIS database and is subject to change. The MNRIS database is updated quarterly. The data was prepared as a joint effort between the MT Dept. of Fish, Wildlife, and Parks (DFWP) and the Montana Natural Resource Information System (MNRIS). The data was derived from the MNRIS database and is subject to change. The MNRIS database is updated quarterly.

**ACKNOWLEDGMENTS (SOURCE):**

The information shown on this map was developed by the Montana Department of Fish, Wildlife, and Parks (DFWP) and the Montana Natural Resource Information System (MNRIS). The data was derived from the MNRIS database and is subject to change. The MNRIS database is updated quarterly. The data was prepared as a joint effort between the MT Dept. of Fish, Wildlife, and Parks (DFWP) and the Montana Natural Resource Information System (MNRIS). The data was derived from the MNRIS database and is subject to change. The MNRIS database is updated quarterly.

**USGS 100,000 Scale Quadrangle Index**

The base scale for the public domain data is 1:100,000. The map shows the extent of the public domain data. The data was derived from the MNRIS database and is subject to change. The MNRIS database is updated quarterly. The data was prepared as a joint effort between the MT Dept. of Fish, Wildlife, and Parks (DFWP) and the Montana Natural Resource Information System (MNRIS). The data was derived from the MNRIS database and is subject to change. The MNRIS database is updated quarterly.