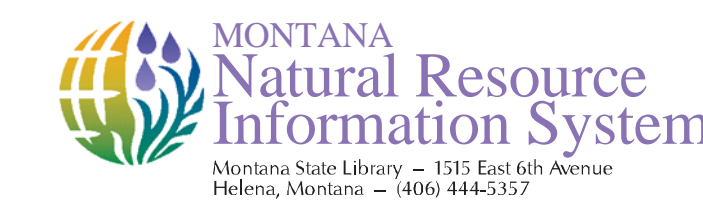
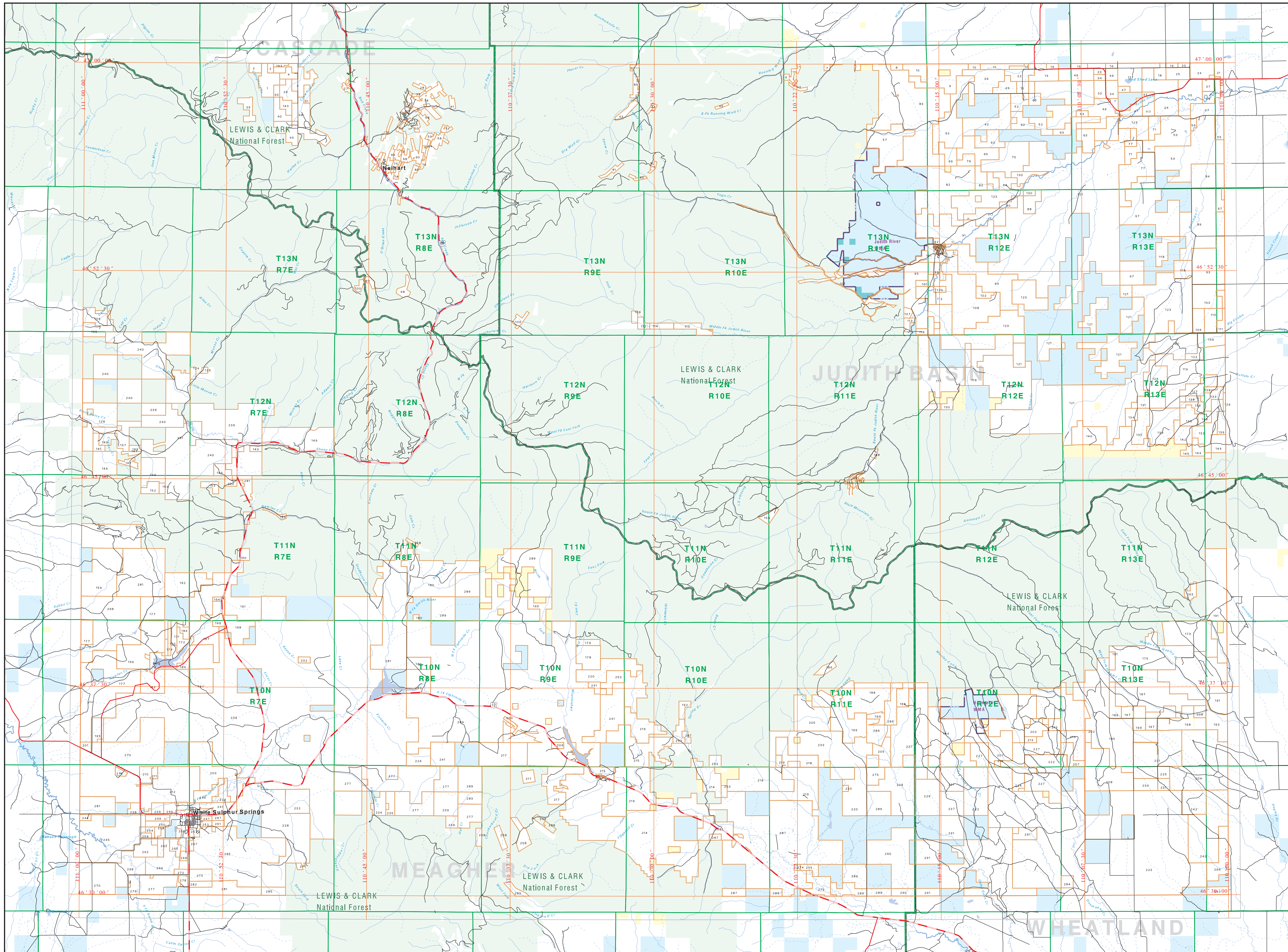




# Private Land Ownership Identification WHITE SULPHUR SPRINGS - (46110b)



Private Land Ownership, 2008



Legend

- Private
- State Lands
- Forest Service
- Bureau of Land Management
- National Park Service
- Other Federal Land
- Fish and Wildlife Service
- Local Road
- River
- Stream/Creek
- Intermittent Creek
- Township
- County Border
- Fish Wildlife & Parks Wildlife Management Area
- Local Govt
- Native American
- Lake/Reservoir
- Interstate
- US Highway
- State Primary
- State Secondary

**NOTES:**  
Not all parcels shown may appear on this map. Some parcels may be shown as unowned or unregistered. The land ownership data displayed on this map may not be complete and may not reflect the most current information available. The Montana Natural Resource Information System (NRIS) is a dynamic system that is constantly being updated. The information displayed on this map is based on the most current data available as of the date of publication. The information displayed on this map is for informational purposes only and should not be used for legal or financial purposes. The information displayed on this map is not a warranty, representation, or endorsement by the Montana Department of Natural Resources and Conservation. The information displayed on this map is not a guarantee of accuracy. The information displayed on this map is not a warranty, representation, or endorsement by the Montana Department of Natural Resources and Conservation. The information displayed on this map is not a guarantee of accuracy.

**ACKNOWLEDGMENTS (SOURCE):**  
This map was produced as a joint effort between the MT Dept. of Nat. Wildlife and Parks (DNWR) and the Montana Natural Resource Information System (NRIS) of the MT State Office. It is based on the Montana Department of Natural Resources and Conservation's (DNRC) land ownership data. The information displayed on this map is based on the most current data available as of the date of publication. The information displayed on this map is for informational purposes only and should not be used for legal or financial purposes. The information displayed on this map is not a warranty, representation, or endorsement by the Montana Department of Natural Resources and Conservation. The information displayed on this map is not a guarantee of accuracy.

The private land data were developed by the Montana Department of Natural Resources and Conservation (DNRC) and the Montana Department of Land and Natural Resources (DLNR). The information displayed on this map is based on the most current data available as of the date of publication. The information displayed on this map is for informational purposes only and should not be used for legal or financial purposes. The information displayed on this map is not a warranty, representation, or endorsement by the Montana Department of Natural Resources and Conservation. The information displayed on this map is not a guarantee of accuracy.

