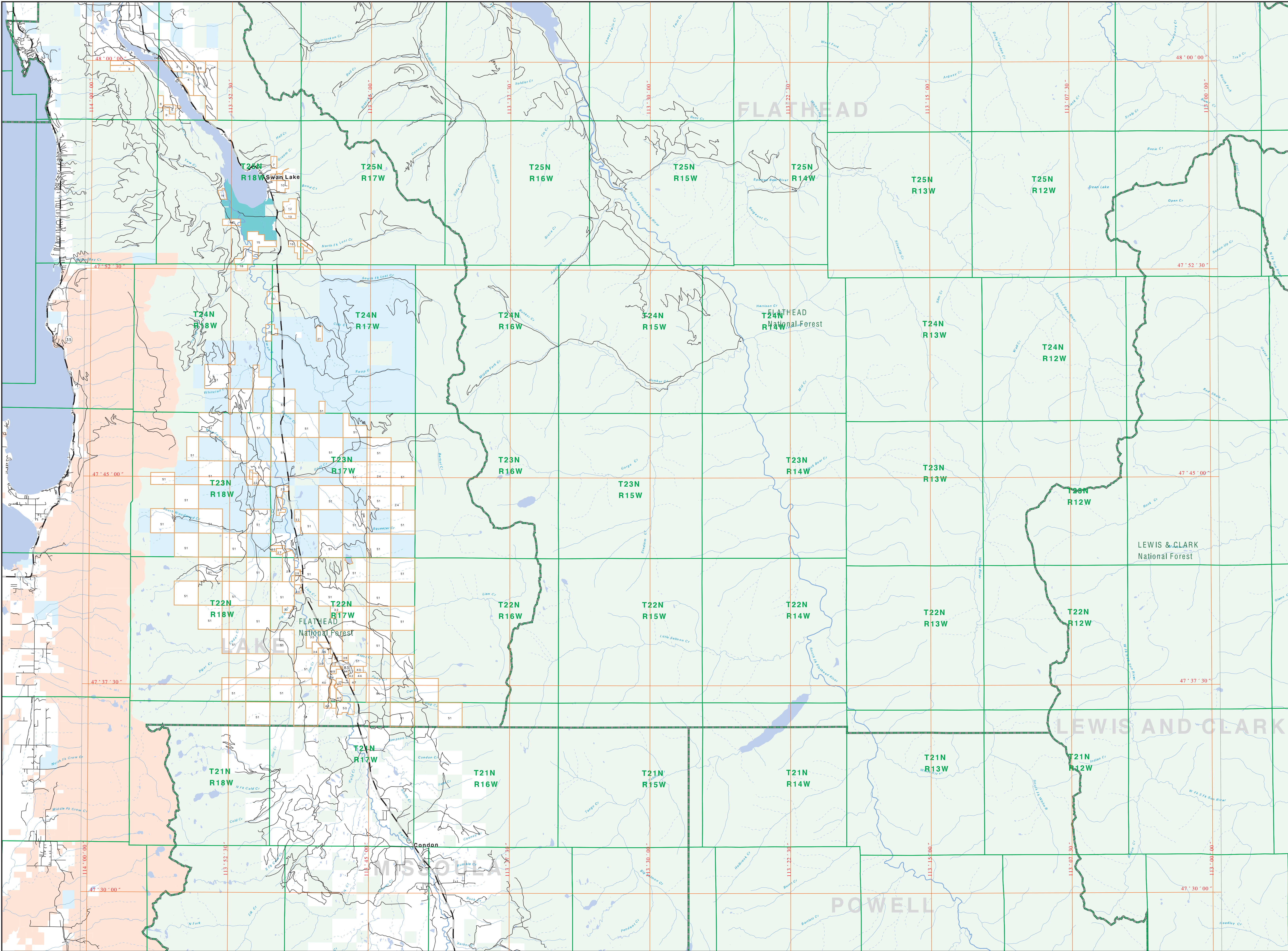
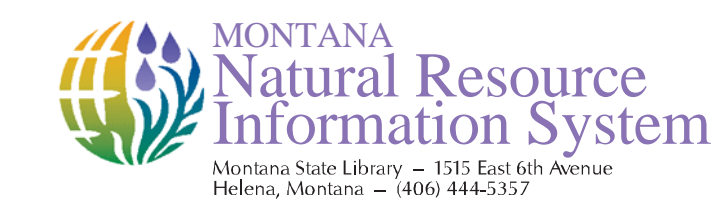




Private Land Ownership Identification SWAN PEAK - (47113b)



Legend

- 1. NEEDHAM HRP, L10
- 2. LINDSEY HERRICK & CO., INC.
- 3. PLUM CREEK TRACT COMPANY, INC.
- 4. J.P. BARKER & CO., INC.
- 5. JEFFREY W. HUNTER & SONS, INC.
- 6. PLUM CREEK TRACT COMPANY, L.P.
- 7. HENNINGSON FAMILY TRACT, INC.
- 8. BRADY REALTY, INC.
- 9. SHENKEL REALTY, INC.
- 10. BRADY REALTY, INC.
- 11. COLEMAN REALTY, INC.
- 12. NEEDHAM HRP, L10
- 13. HENNINGSON FAMILY TRACT, INC.
- 14. HENNINGSON FAMILY TRACT, INC.
- 15. HENNINGSON FAMILY TRACT, INC.
- 16. HENNINGSON FAMILY TRACT, INC.
- 17. HENNINGSON FAMILY TRACT, INC.
- 18. HENNINGSON FAMILY TRACT, INC.
- 19. HENNINGSON FAMILY TRACT, INC.
- 20. HENNINGSON FAMILY TRACT, INC.
- 21. HENNINGSON FAMILY TRACT, INC.
- 22. HENNINGSON FAMILY TRACT, INC.
- 23. HENNINGSON FAMILY TRACT, INC.
- 24. HENNINGSON FAMILY TRACT, INC.
- 25. HENNINGSON FAMILY TRACT, INC.
- 26. HENNINGSON FAMILY TRACT, INC.
- 27. HENNINGSON FAMILY TRACT, INC.
- 28. HENNINGSON FAMILY TRACT, INC.
- 29. HENNINGSON FAMILY TRACT, INC.
- 30. HENNINGSON FAMILY TRACT, INC.
- 31. HENNINGSON FAMILY TRACT, INC.
- 32. HENNINGSON FAMILY TRACT, INC.
- 33. HENNINGSON FAMILY TRACT, INC.
- 34. HENNINGSON FAMILY TRACT, INC.
- 35. HENNINGSON FAMILY TRACT, INC.
- 36. HENNINGSON FAMILY TRACT, INC.
- 37. HENNINGSON FAMILY TRACT, INC.
- 38. HENNINGSON FAMILY TRACT, INC.
- 39. HENNINGSON FAMILY TRACT, INC.
- 40. HENNINGSON FAMILY TRACT, INC.
- 41. HENNINGSON FAMILY TRACT, INC.
- 42. HENNINGSON FAMILY TRACT, INC.
- 43. HENNINGSON FAMILY TRACT, INC.
- 44. HENNINGSON FAMILY TRACT, INC.
- 45. HENNINGSON FAMILY TRACT, INC.
- 46. HENNINGSON FAMILY TRACT, INC.
- 47. HENNINGSON FAMILY TRACT, INC.
- 48. HENNINGSON FAMILY TRACT, INC.
- 49. HENNINGSON FAMILY TRACT, INC.
- 50. HENNINGSON FAMILY TRACT, INC.
- 51. PLUM CREEK TRACT COMPANY, L.P.

- Private
- State Lands
- Forest Service
- Bureau of Land Management
- National Park Service
- Other Federal Land
- Fish and Wildlife Service
- Local Road
- River
- Stream/Creek
- Intermittent Creek
- Township
- County Border
- Fish Wildlife & Parks Wildlife Management Area
- Native American
- Lake/Reservoir
- Interstate
- US Highway
- State Primary
- State Secondary

NOTES:
This map was prepared for the Montana Department of Natural Resources and Conservation as a part of the Private Land Ownership Identification Project. The information presented on this map is for informational purposes only and does not constitute a warranty of accuracy. The Montana Department of Natural Resources and Conservation is not responsible for any errors or omissions on this map. The information presented on this map is for informational purposes only and does not constitute a warranty of accuracy. The Montana Department of Natural Resources and Conservation is not responsible for any errors or omissions on this map.

ACKNOWLEDGMENTS / SOURCES:
This map was prepared as a joint effort between the MT Dept. of Nat. Wildlife and Parks (DNRC) and the Montana Natural Resource Information System (NARIS). The map was prepared using data from the Montana Department of Natural Resources and Conservation, the Montana Department of Transportation, and the Montana Department of Labor and Industry. The map was prepared using data from the Montana Department of Natural Resources and Conservation, the Montana Department of Transportation, and the Montana Department of Labor and Industry.

The private land data were developed by the Montana Department of Natural Resources and Conservation. The map was prepared using data from the Montana Department of Natural Resources and Conservation, the Montana Department of Transportation, and the Montana Department of Labor and Industry. The map was prepared using data from the Montana Department of Natural Resources and Conservation, the Montana Department of Transportation, and the Montana Department of Labor and Industry.

