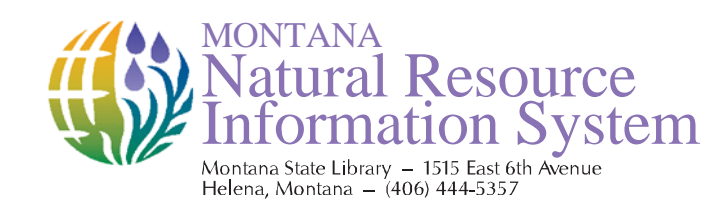
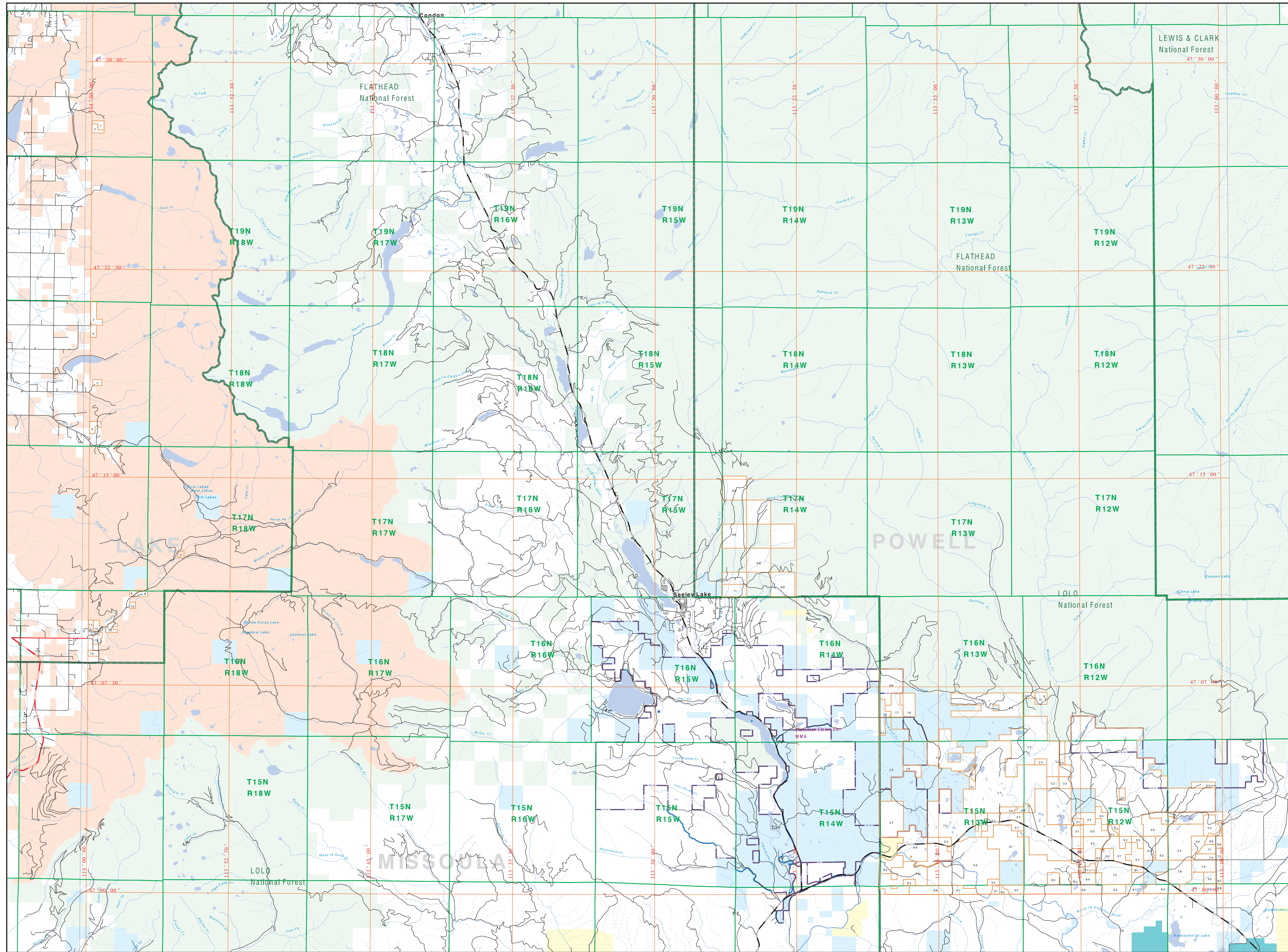




Private Land Ownership Identification SEELEY LAKE - (47113a)



Project Name: Private Land Ownership Identification



Legend:

1	LOUISIANA STATE UNIVERSITY
2	LOUISIANA STATE UNIVERSITY
3	LOUISIANA STATE UNIVERSITY
4	LOUISIANA STATE UNIVERSITY
5	LOUISIANA STATE UNIVERSITY
6	LOUISIANA STATE UNIVERSITY
7	LOUISIANA STATE UNIVERSITY
8	LOUISIANA STATE UNIVERSITY
9	LOUISIANA STATE UNIVERSITY
10	LOUISIANA STATE UNIVERSITY
11	LOUISIANA STATE UNIVERSITY
12	LOUISIANA STATE UNIVERSITY
13	LOUISIANA STATE UNIVERSITY
14	LOUISIANA STATE UNIVERSITY
15	LOUISIANA STATE UNIVERSITY
16	LOUISIANA STATE UNIVERSITY
17	LOUISIANA STATE UNIVERSITY
18	LOUISIANA STATE UNIVERSITY
19	LOUISIANA STATE UNIVERSITY
20	LOUISIANA STATE UNIVERSITY
21	LOUISIANA STATE UNIVERSITY
22	LOUISIANA STATE UNIVERSITY
23	LOUISIANA STATE UNIVERSITY
24	LOUISIANA STATE UNIVERSITY
25	LOUISIANA STATE UNIVERSITY
26	LOUISIANA STATE UNIVERSITY
27	LOUISIANA STATE UNIVERSITY
28	LOUISIANA STATE UNIVERSITY
29	LOUISIANA STATE UNIVERSITY
30	LOUISIANA STATE UNIVERSITY
31	LOUISIANA STATE UNIVERSITY
32	LOUISIANA STATE UNIVERSITY
33	LOUISIANA STATE UNIVERSITY
34	LOUISIANA STATE UNIVERSITY
35	LOUISIANA STATE UNIVERSITY
36	LOUISIANA STATE UNIVERSITY
37	LOUISIANA STATE UNIVERSITY
38	LOUISIANA STATE UNIVERSITY
39	LOUISIANA STATE UNIVERSITY
40	LOUISIANA STATE UNIVERSITY
41	LOUISIANA STATE UNIVERSITY
42	LOUISIANA STATE UNIVERSITY
43	LOUISIANA STATE UNIVERSITY
44	LOUISIANA STATE UNIVERSITY
45	LOUISIANA STATE UNIVERSITY
46	LOUISIANA STATE UNIVERSITY
47	LOUISIANA STATE UNIVERSITY
48	LOUISIANA STATE UNIVERSITY
49	LOUISIANA STATE UNIVERSITY
50	LOUISIANA STATE UNIVERSITY
51	LOUISIANA STATE UNIVERSITY
52	LOUISIANA STATE UNIVERSITY
53	LOUISIANA STATE UNIVERSITY
54	LOUISIANA STATE UNIVERSITY
55	LOUISIANA STATE UNIVERSITY
56	LOUISIANA STATE UNIVERSITY
57	LOUISIANA STATE UNIVERSITY
58	LOUISIANA STATE UNIVERSITY
59	LOUISIANA STATE UNIVERSITY
60	LOUISIANA STATE UNIVERSITY
61	LOUISIANA STATE UNIVERSITY
62	LOUISIANA STATE UNIVERSITY
63	LOUISIANA STATE UNIVERSITY
64	LOUISIANA STATE UNIVERSITY
65	LOUISIANA STATE UNIVERSITY
66	LOUISIANA STATE UNIVERSITY
67	LOUISIANA STATE UNIVERSITY
68	LOUISIANA STATE UNIVERSITY
69	LOUISIANA STATE UNIVERSITY
70	LOUISIANA STATE UNIVERSITY
71	LOUISIANA STATE UNIVERSITY
72	LOUISIANA STATE UNIVERSITY
73	LOUISIANA STATE UNIVERSITY
74	LOUISIANA STATE UNIVERSITY
75	LOUISIANA STATE UNIVERSITY
76	LOUISIANA STATE UNIVERSITY
77	LOUISIANA STATE UNIVERSITY
78	LOUISIANA STATE UNIVERSITY
79	LOUISIANA STATE UNIVERSITY
80	LOUISIANA STATE UNIVERSITY
81	LOUISIANA STATE UNIVERSITY
82	LOUISIANA STATE UNIVERSITY
83	LOUISIANA STATE UNIVERSITY
84	LOUISIANA STATE UNIVERSITY
85	LOUISIANA STATE UNIVERSITY
86	LOUISIANA STATE UNIVERSITY
87	LOUISIANA STATE UNIVERSITY
88	LOUISIANA STATE UNIVERSITY
89	LOUISIANA STATE UNIVERSITY
90	LOUISIANA STATE UNIVERSITY

- Private
- State Lands
- Forest Service
- Bureau of Land Management
- National Park Service
- Other Federal Land
- Fish and Wildlife Service
- Local Road
- River
- Stream/Creek
- Intermittent Creek
- County
- Township
- Fish Wildlife & Parks Wildlife Management Area
- Local Govt
- Native American
- Lake/Reservoir
- Interstate
- US Highway
- State Primary
- State Secondary

NOTES:
Not all legend items may appear on this map.
Please refer to the map legend for more details.
The land ownership data displayed on this map was derived from the Montana Natural Resource Information System (MNRS) using the following data sources:
1. Montana Department of Natural Resources and Conservation (DNRC) - Private Land Ownership Data (1998-2003)
2. Montana Department of Natural Resources and Conservation (DNRC) - National Forest Data (1998-2003)
3. Montana Department of Natural Resources and Conservation (DNRC) - Bureau of Land Management Data (1998-2003)
4. Montana Department of Natural Resources and Conservation (DNRC) - National Park Service Data (1998-2003)
5. Montana Department of Natural Resources and Conservation (DNRC) - Fish and Wildlife Service Data (1998-2003)

ACKNOWLEDGEMENTS / SOURCE:
The private land data was developed by the Montana Natural Resource Information System (MNRS) and the Montana Department of Natural Resources and Conservation (DNRC).
The public land data was developed by the Montana Department of Natural Resources and Conservation (DNRC).
The map was developed by the Montana Department of Natural Resources and Conservation (DNRC).

The private land data was developed by the Montana Department of Natural Resources and Conservation (DNRC) using the following data sources:
1. Montana Department of Natural Resources and Conservation (DNRC) - Private Land Ownership Data (1998-2003)
2. Montana Department of Natural Resources and Conservation (DNRC) - National Forest Data (1998-2003)
3. Montana Department of Natural Resources and Conservation (DNRC) - Bureau of Land Management Data (1998-2003)
4. Montana Department of Natural Resources and Conservation (DNRC) - National Park Service Data (1998-2003)
5. Montana Department of Natural Resources and Conservation (DNRC) - Fish and Wildlife Service Data (1998-2003)

