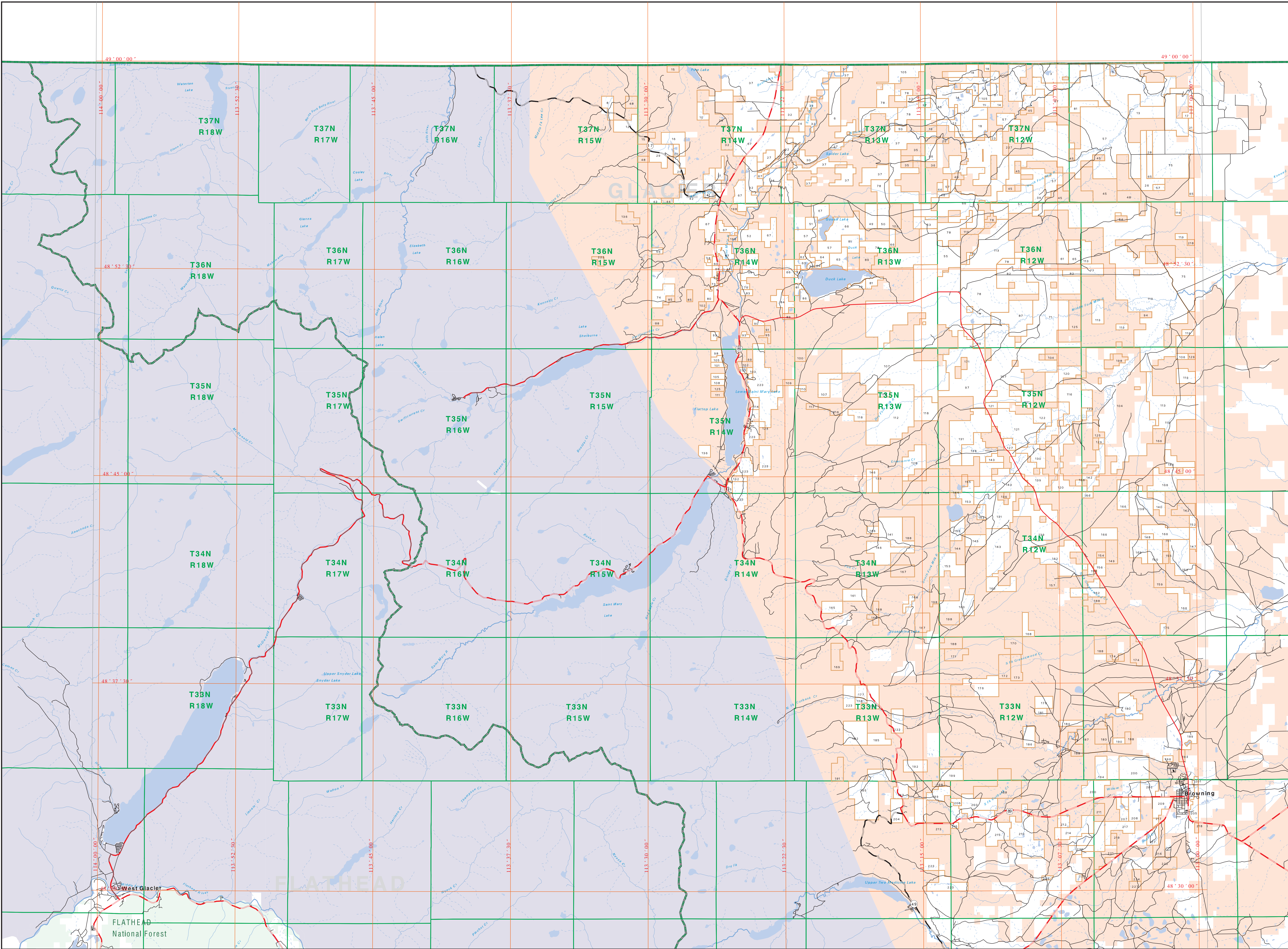


- 1 CARPENTER JOSEPH GORDON, 43
- 2 WEAVER JOHN C, 20
- 3 DEAN DAN V, 124 ACRES, 188
- 4 DEAN DAN V, 124 ACRES, 188
- 5 DEAN DAN V, 124 ACRES, 188
- 6 DEAN DAN V, 124 ACRES, 188
- 7 DEAN DAN V, 124 ACRES, 188
- 8 DEAN DAN V, 124 ACRES, 188
- 9 DEAN DAN V, 124 ACRES, 188
- 10 DEAN DAN V, 124 ACRES, 188
- 11 DEAN DAN V, 124 ACRES, 188
- 12 DEAN DAN V, 124 ACRES, 188
- 13 DEAN DAN V, 124 ACRES, 188
- 14 DEAN DAN V, 124 ACRES, 188
- 15 DEAN DAN V, 124 ACRES, 188
- 16 DEAN DAN V, 124 ACRES, 188
- 17 DEAN DAN V, 124 ACRES, 188
- 18 DEAN DAN V, 124 ACRES, 188
- 19 DEAN DAN V, 124 ACRES, 188
- 20 DEAN DAN V, 124 ACRES, 188
- 21 DEAN DAN V, 124 ACRES, 188
- 22 DEAN DAN V, 124 ACRES, 188
- 23 DEAN DAN V, 124 ACRES, 188
- 24 DEAN DAN V, 124 ACRES, 188
- 25 DEAN DAN V, 124 ACRES, 188
- 26 DEAN DAN V, 124 ACRES, 188
- 27 DEAN DAN V, 124 ACRES, 188
- 28 DEAN DAN V, 124 ACRES, 188
- 29 DEAN DAN V, 124 ACRES, 188
- 30 DEAN DAN V, 124 ACRES, 188
- 31 DEAN DAN V, 124 ACRES, 188
- 32 DEAN DAN V, 124 ACRES, 188
- 33 DEAN DAN V, 124 ACRES, 188
- 34 DEAN DAN V, 124 ACRES, 188
- 35 DEAN DAN V, 124 ACRES, 188
- 36 DEAN DAN V, 124 ACRES, 188
- 37 DEAN DAN V, 124 ACRES, 188
- 38 DEAN DAN V, 124 ACRES, 188
- 39 DEAN DAN V, 124 ACRES, 188
- 40 DEAN DAN V, 124 ACRES, 188
- 41 DEAN DAN V, 124 ACRES, 188
- 42 DEAN DAN V, 124 ACRES, 188
- 43 DEAN DAN V, 124 ACRES, 188
- 44 DEAN DAN V, 124 ACRES, 188
- 45 DEAN DAN V, 124 ACRES, 188
- 46 DEAN DAN V, 124 ACRES, 188
- 47 DEAN DAN V, 124 ACRES, 188
- 48 DEAN DAN V, 124 ACRES, 188
- 49 DEAN DAN V, 124 ACRES, 188
- 50 DEAN DAN V, 124 ACRES, 188
- 51 DEAN DAN V, 124 ACRES, 188
- 52 DEAN DAN V, 124 ACRES, 188
- 53 DEAN DAN V, 124 ACRES, 188
- 54 DEAN DAN V, 124 ACRES, 188
- 55 DEAN DAN V, 124 ACRES, 188
- 56 DEAN DAN V, 124 ACRES, 188
- 57 DEAN DAN V, 124 ACRES, 188
- 58 DEAN DAN V, 124 ACRES, 188
- 59 DEAN DAN V, 124 ACRES, 188
- 60 DEAN DAN V, 124 ACRES, 188
- 61 DEAN DAN V, 124 ACRES, 188
- 62 DEAN DAN V, 124 ACRES, 188
- 63 DEAN DAN V, 124 ACRES, 188
- 64 DEAN DAN V, 124 ACRES, 188
- 65 DEAN DAN V, 124 ACRES, 188
- 66 DEAN DAN V, 124 ACRES, 188
- 67 DEAN DAN V, 124 ACRES, 188
- 68 DEAN DAN V, 124 ACRES, 188
- 69 DEAN DAN V, 124 ACRES, 188
- 70 DEAN DAN V, 124 ACRES, 188
- 71 DEAN DAN V, 124 ACRES, 188
- 72 DEAN DAN V, 124 ACRES, 188
- 73 DEAN DAN V, 124 ACRES, 188
- 74 DEAN DAN V, 124 ACRES, 188
- 75 DEAN DAN V, 124 ACRES, 188
- 76 DEAN DAN V, 124 ACRES, 188
- 77 DEAN DAN V, 124 ACRES, 188
- 78 DEAN DAN V, 124 ACRES, 188
- 79 DEAN DAN V, 124 ACRES, 188
- 80 DEAN DAN V, 124 ACRES, 188
- 81 DEAN DAN V, 124 ACRES, 188
- 82 DEAN DAN V, 124 ACRES, 188
- 83 DEAN DAN V, 124 ACRES, 188
- 84 DEAN DAN V, 124 ACRES, 188
- 85 DEAN DAN V, 124 ACRES, 188
- 86 DEAN DAN V, 124 ACRES, 188
- 87 DEAN DAN V, 124 ACRES, 188
- 88 DEAN DAN V, 124 ACRES, 188
- 89 DEAN DAN V, 124 ACRES, 188
- 90 DEAN DAN V, 124 ACRES, 188
- 91 DEAN DAN V, 124 ACRES, 188
- 92 DEAN DAN V, 124 ACRES, 188
- 93 DEAN DAN V, 124 ACRES, 188
- 94 DEAN DAN V, 124 ACRES, 188
- 95 DEAN DAN V, 124 ACRES, 188
- 96 DEAN DAN V, 124 ACRES, 188
- 97 DEAN DAN V, 124 ACRES, 188
- 98 DEAN DAN V, 124 ACRES, 188
- 99 DEAN DAN V, 124 ACRES, 188
- 100 DEAN DAN V, 124 ACRES, 188



- Private
- Forest Service
- Bureau of Land Management
- National Park Service
- Other Federal Land
- Fish and Wildlife Service
- State Lands
- Local Govt
- Native American
- Lake/Reservoir
- Interstate
- US Highway
- State Primary
- State Secondary
- Local Road
- River
- Stream/Creek
- Intermittent Creek
- Township
- County Border
- Fish Wildlife & Parks
- Wildlife Management Area

**NOTES:**  
Not all legend items may appear on this map.  
This map was prepared as a public information product by the Montana Department of Natural Resources and Conservation (DNRC). The DNRC is not responsible for any errors or omissions on this map. The DNRC is not responsible for any damage or loss resulting from the use of this map. The DNRC is not responsible for any damage or loss resulting from the use of this map.

**ACKNOWLEDGMENTS - SOURCES:**  
This map was prepared as a public information product by the Montana Department of Natural Resources and Conservation (DNRC). The DNRC is not responsible for any errors or omissions on this map. The DNRC is not responsible for any damage or loss resulting from the use of this map. The DNRC is not responsible for any damage or loss resulting from the use of this map.

The private land data were developed for the Montana Department of Natural Resources and Conservation (DNRC) by the Montana Department of Natural Resources and Conservation (DNRC). The DNRC is not responsible for any errors or omissions on this map. The DNRC is not responsible for any damage or loss resulting from the use of this map. The DNRC is not responsible for any damage or loss resulting from the use of this map.

The public land data were developed for the Montana Department of Natural Resources and Conservation (DNRC) by the Montana Department of Natural Resources and Conservation (DNRC). The DNRC is not responsible for any errors or omissions on this map. The DNRC is not responsible for any damage or loss resulting from the use of this map. The DNRC is not responsible for any damage or loss resulting from the use of this map.

Map produced September 2004 with monthly data current as of July 2004.

