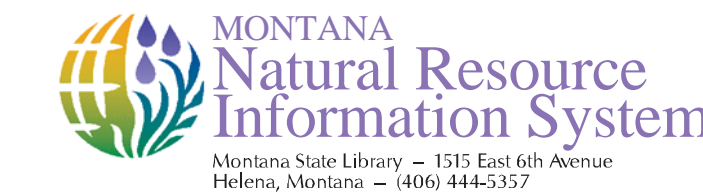
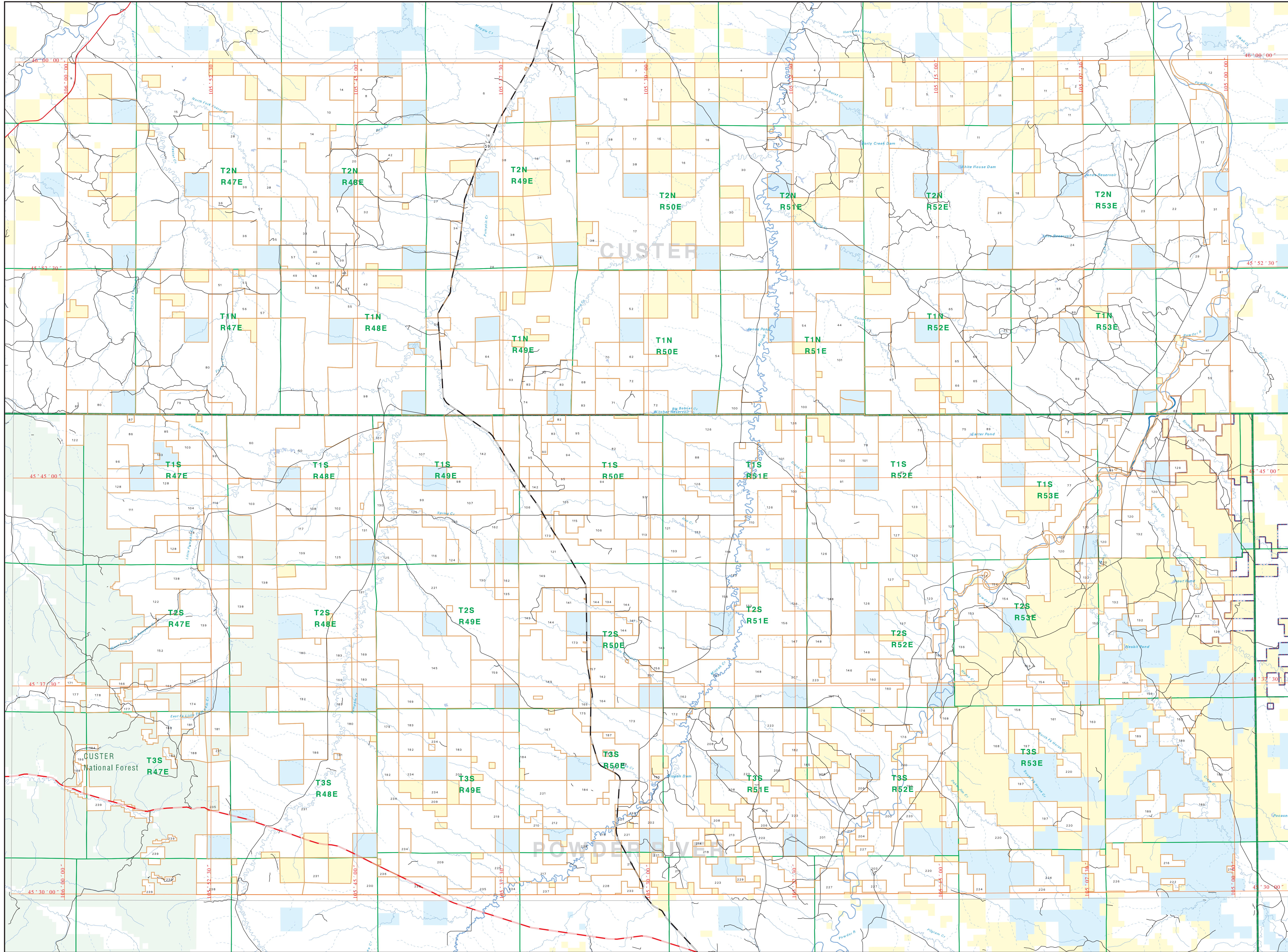




Private Land Ownership Identification POWDERVILLE - (45105b)



Project Name: Open Range, Trail Access



Legend listing land ownership types and their corresponding colors: Private (yellow), State Lands (blue), Forest Service (green), Bureau of Land Management (grey), National Park Service (orange), Other Federal Land (purple), Fish and Wildlife Service (cyan), Local Road (black), River (blue), Stream/Creek (blue), Intermittent Creek (dotted blue), County Border (green), Township Border (red), Fish Wildlife & Parks Wildlife Management Area (dotted green), Local Govt (grey), Native American (purple), Lake/Reservoir (blue), Interstate (red), US Highway (black), State Primary (red), State Secondary (red).

NOTES:
Not all legal items may appear on this map.
Boundary lines on this map are not legally enforceable.
This map was prepared as a service to the public.
The Montana Department of Natural Resources and Conservation does not warrant the accuracy or completeness of the information contained on this map.
The Montana Department of Natural Resources and Conservation is not responsible for any errors or omissions that may appear on this map.
This map was prepared as a service to the public.
The Montana Department of Natural Resources and Conservation does not warrant the accuracy or completeness of the information contained on this map.
The Montana Department of Natural Resources and Conservation is not responsible for any errors or omissions that may appear on this map.

ACKNOWLEDGMENTS (SOURCE):
This map was prepared as a joint effort between the MT Dept. of Nat. Wildlife and Parks (DNWR) and the Montana Natural Resource Information System (NRSIS) of the MT State Archives. It is based on data from the Montana Department of Natural Resources and Conservation (DNRC) and the Montana Department of Transportation (MDOT).
The public land data is from the MT Natural Heritage Program's land ownership data. The private land data is from the Montana Department of Natural Resources and Conservation (DNRC) and the Montana Department of Transportation (MDOT).
The base map for this map is from the MT State Archives, which is based on the USGS 100,000 Scale Quadrangle Index.

