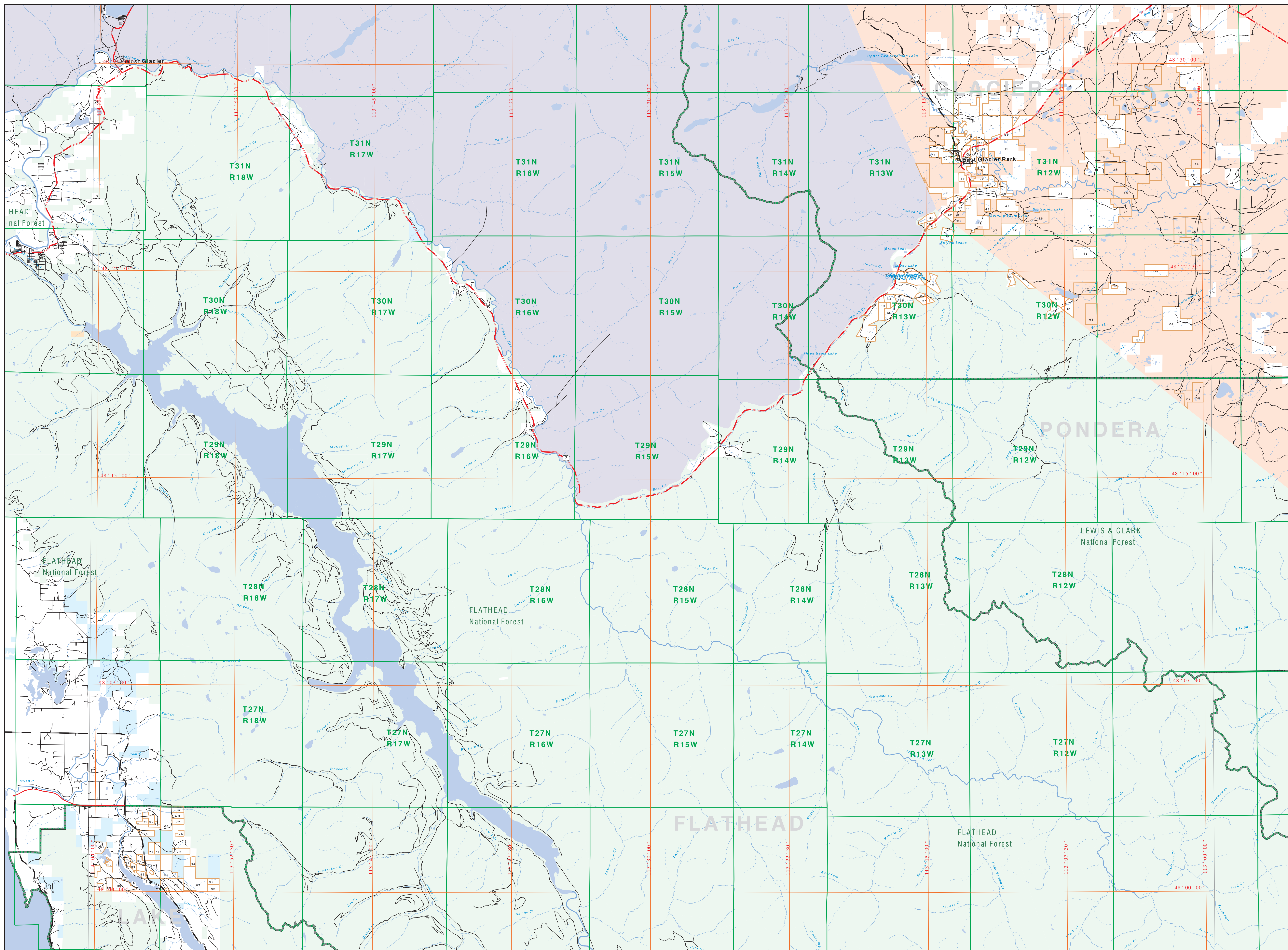


Private Land Ownership Identification HUNGRY HORSE RESERVOIR - (48113a)

Project Name: Orange Grove, Twp 28N, R 12W

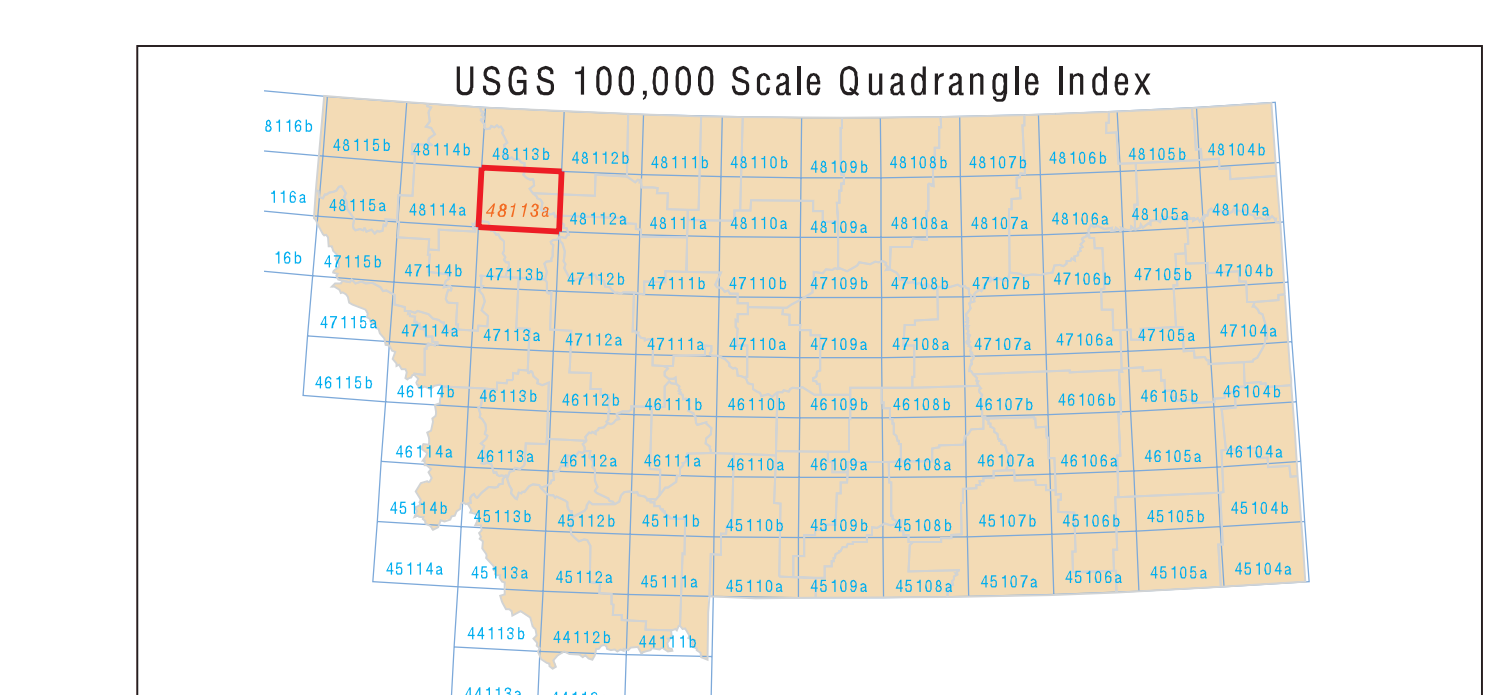
- 1. HUNGRY HORSE RESERVOIR
- 2. HUNGRY HORSE RESERVOIR
- 3. HUNGRY HORSE RESERVOIR
- 4. HUNGRY HORSE RESERVOIR
- 5. HUNGRY HORSE RESERVOIR
- 6. HUNGRY HORSE RESERVOIR
- 7. HUNGRY HORSE RESERVOIR
- 8. HUNGRY HORSE RESERVOIR
- 9. HUNGRY HORSE RESERVOIR
- 10. HUNGRY HORSE RESERVOIR
- 11. HUNGRY HORSE RESERVOIR
- 12. HUNGRY HORSE RESERVOIR
- 13. HUNGRY HORSE RESERVOIR
- 14. HUNGRY HORSE RESERVOIR
- 15. HUNGRY HORSE RESERVOIR
- 16. HUNGRY HORSE RESERVOIR
- 17. HUNGRY HORSE RESERVOIR
- 18. HUNGRY HORSE RESERVOIR
- 19. HUNGRY HORSE RESERVOIR
- 20. HUNGRY HORSE RESERVOIR
- 21. HUNGRY HORSE RESERVOIR
- 22. HUNGRY HORSE RESERVOIR
- 23. HUNGRY HORSE RESERVOIR
- 24. HUNGRY HORSE RESERVOIR
- 25. HUNGRY HORSE RESERVOIR
- 26. HUNGRY HORSE RESERVOIR
- 27. HUNGRY HORSE RESERVOIR
- 28. HUNGRY HORSE RESERVOIR
- 29. HUNGRY HORSE RESERVOIR
- 30. HUNGRY HORSE RESERVOIR
- 31. HUNGRY HORSE RESERVOIR
- 32. HUNGRY HORSE RESERVOIR
- 33. HUNGRY HORSE RESERVOIR
- 34. HUNGRY HORSE RESERVOIR
- 35. HUNGRY HORSE RESERVOIR
- 36. HUNGRY HORSE RESERVOIR
- 37. HUNGRY HORSE RESERVOIR
- 38. HUNGRY HORSE RESERVOIR
- 39. HUNGRY HORSE RESERVOIR
- 40. HUNGRY HORSE RESERVOIR
- 41. HUNGRY HORSE RESERVOIR
- 42. HUNGRY HORSE RESERVOIR
- 43. HUNGRY HORSE RESERVOIR
- 44. HUNGRY HORSE RESERVOIR
- 45. HUNGRY HORSE RESERVOIR
- 46. HUNGRY HORSE RESERVOIR
- 47. HUNGRY HORSE RESERVOIR
- 48. HUNGRY HORSE RESERVOIR
- 49. HUNGRY HORSE RESERVOIR
- 50. HUNGRY HORSE RESERVOIR
- 51. HUNGRY HORSE RESERVOIR
- 52. HUNGRY HORSE RESERVOIR
- 53. HUNGRY HORSE RESERVOIR
- 54. HUNGRY HORSE RESERVOIR
- 55. HUNGRY HORSE RESERVOIR
- 56. HUNGRY HORSE RESERVOIR
- 57. HUNGRY HORSE RESERVOIR
- 58. HUNGRY HORSE RESERVOIR
- 59. HUNGRY HORSE RESERVOIR
- 60. HUNGRY HORSE RESERVOIR
- 61. HUNGRY HORSE RESERVOIR
- 62. HUNGRY HORSE RESERVOIR
- 63. HUNGRY HORSE RESERVOIR
- 64. HUNGRY HORSE RESERVOIR
- 65. HUNGRY HORSE RESERVOIR
- 66. HUNGRY HORSE RESERVOIR
- 67. HUNGRY HORSE RESERVOIR
- 68. HUNGRY HORSE RESERVOIR
- 69. HUNGRY HORSE RESERVOIR
- 70. HUNGRY HORSE RESERVOIR
- 71. HUNGRY HORSE RESERVOIR
- 72. HUNGRY HORSE RESERVOIR
- 73. HUNGRY HORSE RESERVOIR
- 74. HUNGRY HORSE RESERVOIR
- 75. HUNGRY HORSE RESERVOIR
- 76. HUNGRY HORSE RESERVOIR
- 77. HUNGRY HORSE RESERVOIR
- 78. HUNGRY HORSE RESERVOIR
- 79. HUNGRY HORSE RESERVOIR
- 80. HUNGRY HORSE RESERVOIR
- 81. HUNGRY HORSE RESERVOIR
- 82. HUNGRY HORSE RESERVOIR
- 83. HUNGRY HORSE RESERVOIR
- 84. HUNGRY HORSE RESERVOIR
- 85. HUNGRY HORSE RESERVOIR
- 86. HUNGRY HORSE RESERVOIR
- 87. HUNGRY HORSE RESERVOIR
- 88. HUNGRY HORSE RESERVOIR
- 89. HUNGRY HORSE RESERVOIR
- 90. HUNGRY HORSE RESERVOIR
- 91. HUNGRY HORSE RESERVOIR
- 92. HUNGRY HORSE RESERVOIR
- 93. HUNGRY HORSE RESERVOIR
- 94. HUNGRY HORSE RESERVOIR
- 95. HUNGRY HORSE RESERVOIR
- 96. HUNGRY HORSE RESERVOIR
- 97. HUNGRY HORSE RESERVOIR
- 98. HUNGRY HORSE RESERVOIR
- 99. HUNGRY HORSE RESERVOIR
- 100. HUNGRY HORSE RESERVOIR



- Private
- State Lands
- Forest Service
- Bureau of Land Management
- National Park Service
- Other Federal Land
- Fish and Wildlife Service
- Local Road
- River
- Stream/Creek
- Intermittent Creek
- County
- Township
- County Border
- Fish Wildlife & Parks Wildlife Management Area
- Native American
- Local Govt
- Interstate
- US Highway
- State Primary
- State Secondary

NOTES:
Not all legend items may appear on this map.
Reservoir shown on this map are not necessarily public reservoirs.
This map was produced as a joint effort between the MT Dept. of Nat. Wildlife and Parks (DNWR) and the Montana Natural Resource Information System (NRIS) of the MT State Library & Archives. The map was produced using the NRIS database and the USGS 100,000 Scale Quadrangle Index. The map was produced using the NRIS database and the USGS 100,000 Scale Quadrangle Index. The map was produced using the NRIS database and the USGS 100,000 Scale Quadrangle Index.

ACKNOWLEDGMENTS / SOURCE:
This map was produced as a joint effort between the MT Dept. of Nat. Wildlife and Parks (DNWR) and the Montana Natural Resource Information System (NRIS) of the MT State Library & Archives. The map was produced using the NRIS database and the USGS 100,000 Scale Quadrangle Index. The map was produced using the NRIS database and the USGS 100,000 Scale Quadrangle Index. The map was produced using the NRIS database and the USGS 100,000 Scale Quadrangle Index.



Map produced September 2008 with ownership data current as of July 2004.