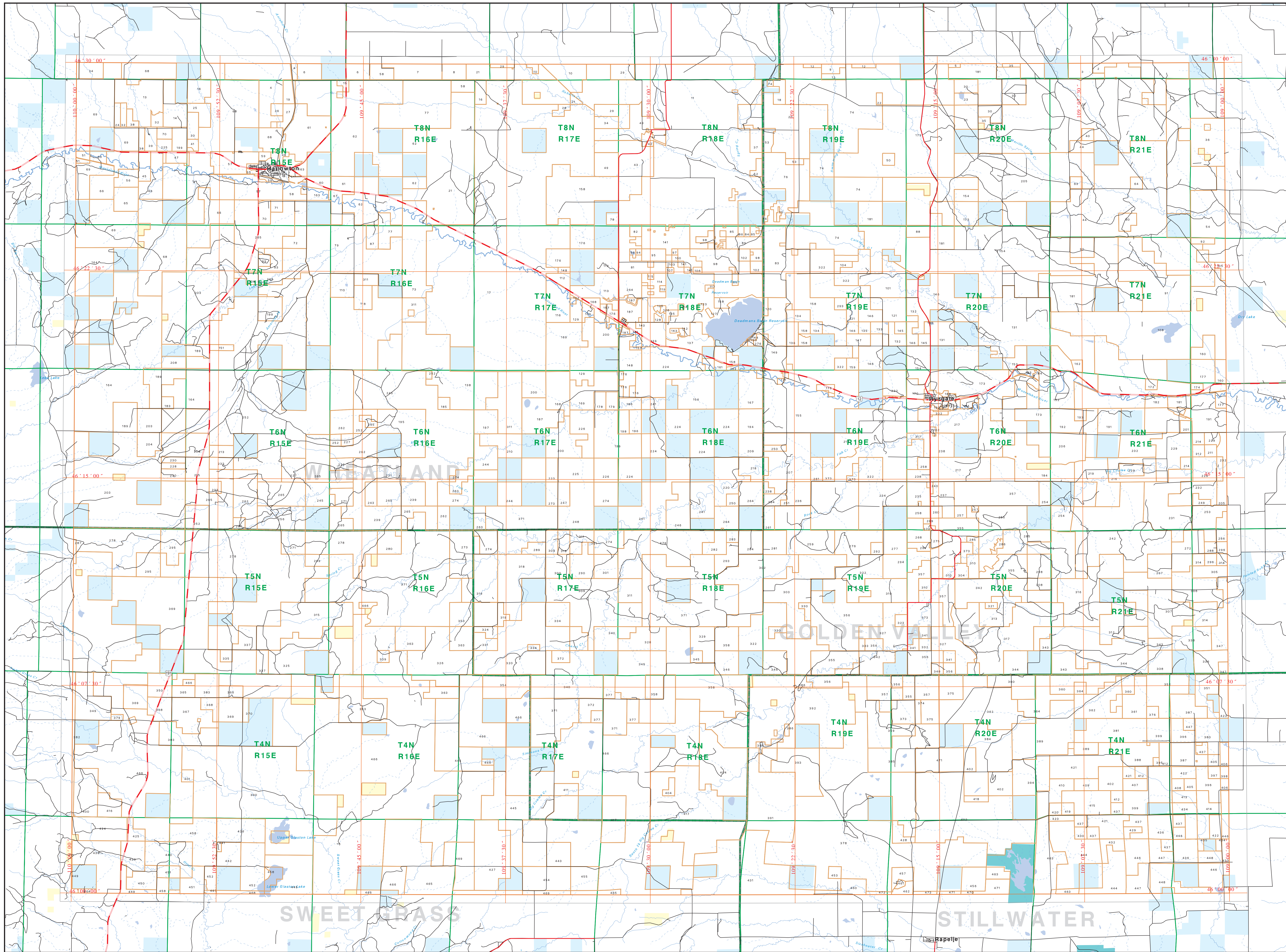
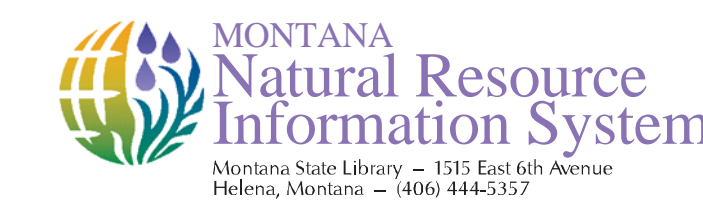




# Private Land Ownership Identification HARLOWTON - (46109a)



Private Land Ownership Identification

- 1 TOWN SQUARE RANGE, NE 1/4
- 2 LANDLIFT OIL & GAS
- 3 LANDLIFT OIL & GAS
- 4 LANDLIFT OIL & GAS
- 5 LANDLIFT OIL & GAS
- 6 LANDLIFT OIL & GAS
- 7 LANDLIFT OIL & GAS
- 8 LANDLIFT OIL & GAS
- 9 LANDLIFT OIL & GAS
- 10 LANDLIFT OIL & GAS
- 11 LANDLIFT OIL & GAS
- 12 LANDLIFT OIL & GAS
- 13 LANDLIFT OIL & GAS
- 14 LANDLIFT OIL & GAS
- 15 LANDLIFT OIL & GAS
- 16 LANDLIFT OIL & GAS
- 17 LANDLIFT OIL & GAS
- 18 LANDLIFT OIL & GAS
- 19 LANDLIFT OIL & GAS
- 20 LANDLIFT OIL & GAS
- 21 LANDLIFT OIL & GAS
- 22 LANDLIFT OIL & GAS
- 23 LANDLIFT OIL & GAS
- 24 LANDLIFT OIL & GAS
- 25 LANDLIFT OIL & GAS
- 26 LANDLIFT OIL & GAS
- 27 LANDLIFT OIL & GAS
- 28 LANDLIFT OIL & GAS
- 29 LANDLIFT OIL & GAS
- 30 LANDLIFT OIL & GAS
- 31 LANDLIFT OIL & GAS
- 32 LANDLIFT OIL & GAS
- 33 LANDLIFT OIL & GAS
- 34 LANDLIFT OIL & GAS
- 35 LANDLIFT OIL & GAS
- 36 LANDLIFT OIL & GAS
- 37 LANDLIFT OIL & GAS
- 38 LANDLIFT OIL & GAS
- 39 LANDLIFT OIL & GAS
- 40 LANDLIFT OIL & GAS
- 41 LANDLIFT OIL & GAS
- 42 LANDLIFT OIL & GAS
- 43 LANDLIFT OIL & GAS
- 44 LANDLIFT OIL & GAS
- 45 LANDLIFT OIL & GAS
- 46 LANDLIFT OIL & GAS
- 47 LANDLIFT OIL & GAS
- 48 LANDLIFT OIL & GAS
- 49 LANDLIFT OIL & GAS
- 50 LANDLIFT OIL & GAS
- 51 LANDLIFT OIL & GAS
- 52 LANDLIFT OIL & GAS
- 53 LANDLIFT OIL & GAS
- 54 LANDLIFT OIL & GAS
- 55 LANDLIFT OIL & GAS
- 56 LANDLIFT OIL & GAS
- 57 LANDLIFT OIL & GAS
- 58 LANDLIFT OIL & GAS
- 59 LANDLIFT OIL & GAS
- 60 LANDLIFT OIL & GAS
- 61 LANDLIFT OIL & GAS
- 62 LANDLIFT OIL & GAS
- 63 LANDLIFT OIL & GAS
- 64 LANDLIFT OIL & GAS
- 65 LANDLIFT OIL & GAS
- 66 LANDLIFT OIL & GAS
- 67 LANDLIFT OIL & GAS
- 68 LANDLIFT OIL & GAS
- 69 LANDLIFT OIL & GAS
- 70 LANDLIFT OIL & GAS
- 71 LANDLIFT OIL & GAS
- 72 LANDLIFT OIL & GAS
- 73 LANDLIFT OIL & GAS
- 74 LANDLIFT OIL & GAS
- 75 LANDLIFT OIL & GAS
- 76 LANDLIFT OIL & GAS
- 77 LANDLIFT OIL & GAS
- 78 LANDLIFT OIL & GAS
- 79 LANDLIFT OIL & GAS
- 80 LANDLIFT OIL & GAS
- 81 LANDLIFT OIL & GAS
- 82 LANDLIFT OIL & GAS
- 83 LANDLIFT OIL & GAS
- 84 LANDLIFT OIL & GAS
- 85 LANDLIFT OIL & GAS
- 86 LANDLIFT OIL & GAS
- 87 LANDLIFT OIL & GAS
- 88 LANDLIFT OIL & GAS
- 89 LANDLIFT OIL & GAS
- 90 LANDLIFT OIL & GAS
- 91 LANDLIFT OIL & GAS
- 92 LANDLIFT OIL & GAS
- 93 LANDLIFT OIL & GAS
- 94 LANDLIFT OIL & GAS
- 95 LANDLIFT OIL & GAS
- 96 LANDLIFT OIL & GAS
- 97 LANDLIFT OIL & GAS
- 98 LANDLIFT OIL & GAS
- 99 LANDLIFT OIL & GAS
- 100 LANDLIFT OIL & GAS

- Private
- State Lands
- Forest Service
- Bureau of Land Management
- Native American
- National Park Service
- Other Federal Land
- Fish and Wildlife Service
- Local Road
- River
- Stream/Creek
- Intermittent Creek
- Township
- County Border
- Fish Wildlife & Parks
- Wildlife Management Area
- Local Govt
- Native American
- Lake/Reservoir
- Intestate
- US Highway
- State Primary
- State Secondary

NOTES:  
Not all legal descriptions appear on this map.  
Some parcels may have been previously owned by the State of Montana.  
The land ownership data was derived from the Montana Department of Natural Resources and Environment's (DNRE) Private Land Ownership Identification Project.  
The DNRE's Private Land Ownership Identification Project is a multi-year project that is currently in progress.  
The DNRE's Private Land Ownership Identification Project is a multi-year project that is currently in progress.  
The DNRE's Private Land Ownership Identification Project is a multi-year project that is currently in progress.

ACKNOWLEDGMENTS (SOURCE):  
This map was prepared as a joint effort between the MT Dept. of Fish, Wildlife, and Parks (DFWP) and the Montana Natural Resource Information System (MNRIS) at Montana State University. The MNRIS is a project of the Montana Department of Natural Resources and Environment (DNRE).  
The DNRE's Private Land Ownership Identification Project is a multi-year project that is currently in progress.  
The DNRE's Private Land Ownership Identification Project is a multi-year project that is currently in progress.  
The DNRE's Private Land Ownership Identification Project is a multi-year project that is currently in progress.

The private land data was developed by the Montana Department of Natural Resources and Environment (DNRE) in cooperation with the Montana Department of Fish, Wildlife, and Parks (DFWP).  
The DNRE's Private Land Ownership Identification Project is a multi-year project that is currently in progress.  
The DNRE's Private Land Ownership Identification Project is a multi-year project that is currently in progress.  
The DNRE's Private Land Ownership Identification Project is a multi-year project that is currently in progress.

