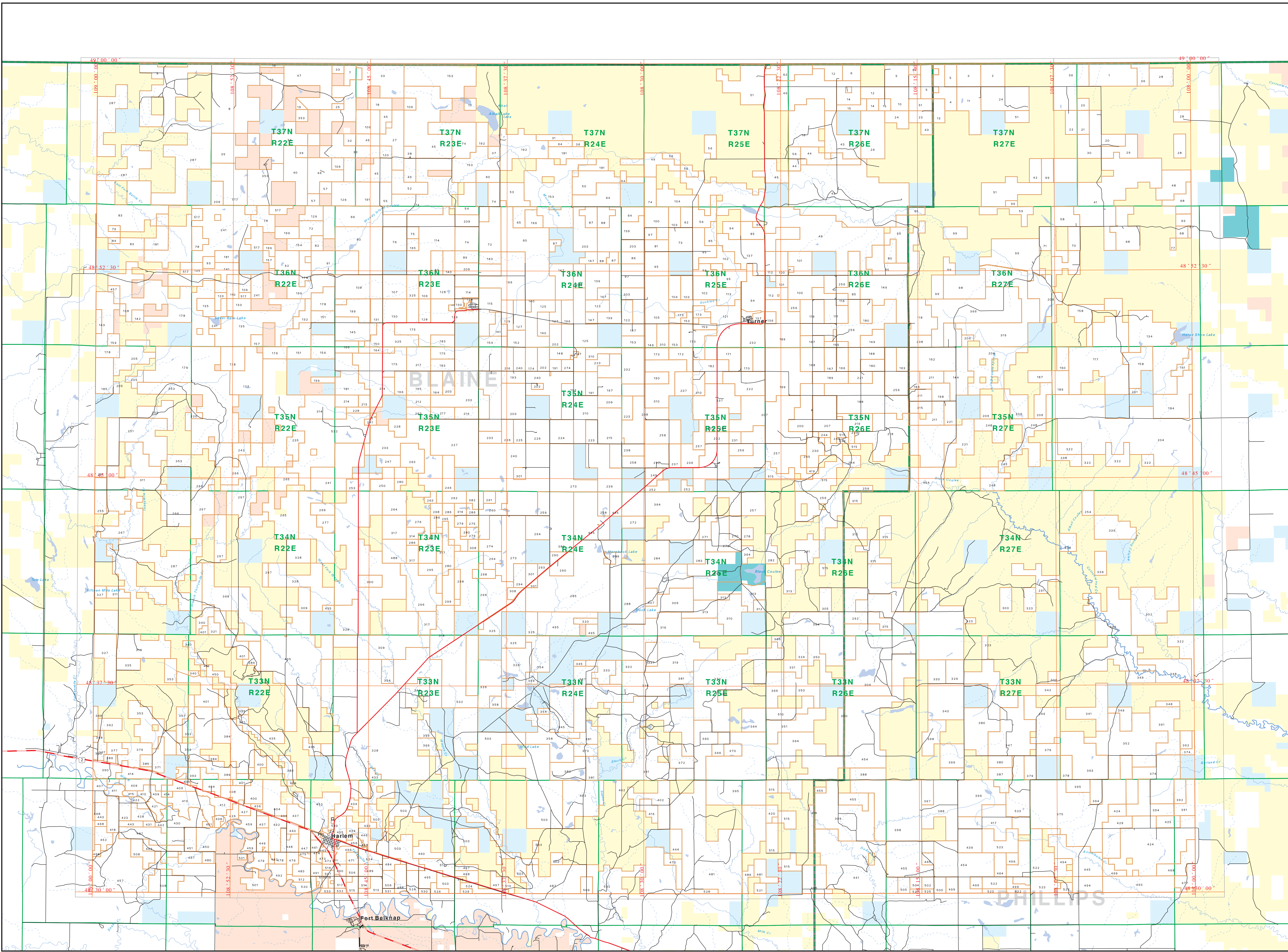
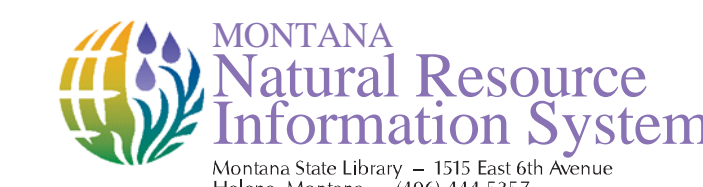




Private Land Ownership Identification HARLEM - (48108b)



Private Land Owners, Total Acres

1. ADAM BARRON, 1947	201. JAMES WARREN R. BURGESS, 1921	401. WALTER CRANFORD, RUTH M., 1920
2. HENRY BROWN, 1922	202. DONALD FRED JR, 1922	402. WENDELL BRADY C. LEIGH, JR, 1920
3. HENRY BROWN, 1922	203. HENRY BROWN, 1922	403. WENDELL BRADY C. LEIGH, JR, 1920
4. HENRY BROWN, 1922	204. HENRY BROWN, 1922	404. WENDELL BRADY C. LEIGH, JR, 1920
5. HENRY BROWN, 1922	205. HENRY BROWN, 1922	405. WENDELL BRADY C. LEIGH, JR, 1920
6. HENRY BROWN, 1922	206. HENRY BROWN, 1922	406. WENDELL BRADY C. LEIGH, JR, 1920
7. HENRY BROWN, 1922	207. HENRY BROWN, 1922	407. WENDELL BRADY C. LEIGH, JR, 1920
8. HENRY BROWN, 1922	208. HENRY BROWN, 1922	408. WENDELL BRADY C. LEIGH, JR, 1920
9. HENRY BROWN, 1922	209. HENRY BROWN, 1922	409. WENDELL BRADY C. LEIGH, JR, 1920
10. HENRY BROWN, 1922	210. HENRY BROWN, 1922	410. WENDELL BRADY C. LEIGH, JR, 1920
11. HENRY BROWN, 1922	211. HENRY BROWN, 1922	411. WENDELL BRADY C. LEIGH, JR, 1920
12. HENRY BROWN, 1922	212. HENRY BROWN, 1922	412. WENDELL BRADY C. LEIGH, JR, 1920
13. HENRY BROWN, 1922	213. HENRY BROWN, 1922	413. WENDELL BRADY C. LEIGH, JR, 1920
14. HENRY BROWN, 1922	214. HENRY BROWN, 1922	414. WENDELL BRADY C. LEIGH, JR, 1920
15. HENRY BROWN, 1922	215. HENRY BROWN, 1922	415. WENDELL BRADY C. LEIGH, JR, 1920
16. HENRY BROWN, 1922	216. HENRY BROWN, 1922	416. WENDELL BRADY C. LEIGH, JR, 1920
17. HENRY BROWN, 1922	217. HENRY BROWN, 1922	417. WENDELL BRADY C. LEIGH, JR, 1920
18. HENRY BROWN, 1922	218. HENRY BROWN, 1922	418. WENDELL BRADY C. LEIGH, JR, 1920
19. HENRY BROWN, 1922	219. HENRY BROWN, 1922	419. WENDELL BRADY C. LEIGH, JR, 1920
20. HENRY BROWN, 1922	220. HENRY BROWN, 1922	420. WENDELL BRADY C. LEIGH, JR, 1920
21. HENRY BROWN, 1922	221. HENRY BROWN, 1922	421. WENDELL BRADY C. LEIGH, JR, 1920
22. HENRY BROWN, 1922	222. HENRY BROWN, 1922	422. WENDELL BRADY C. LEIGH, JR, 1920
23. HENRY BROWN, 1922	223. HENRY BROWN, 1922	423. WENDELL BRADY C. LEIGH, JR, 1920
24. HENRY BROWN, 1922	224. HENRY BROWN, 1922	424. WENDELL BRADY C. LEIGH, JR, 1920
25. HENRY BROWN, 1922	225. HENRY BROWN, 1922	425. WENDELL BRADY C. LEIGH, JR, 1920
26. HENRY BROWN, 1922	226. HENRY BROWN, 1922	426. WENDELL BRADY C. LEIGH, JR, 1920
27. HENRY BROWN, 1922	227. HENRY BROWN, 1922	427. WENDELL BRADY C. LEIGH, JR, 1920
28. HENRY BROWN, 1922	228. HENRY BROWN, 1922	428. WENDELL BRADY C. LEIGH, JR, 1920
29. HENRY BROWN, 1922	229. HENRY BROWN, 1922	429. WENDELL BRADY C. LEIGH, JR, 1920
30. HENRY BROWN, 1922	230. HENRY BROWN, 1922	430. WENDELL BRADY C. LEIGH, JR, 1920
31. HENRY BROWN, 1922	231. HENRY BROWN, 1922	431. WENDELL BRADY C. LEIGH, JR, 1920
32. HENRY BROWN, 1922	232. HENRY BROWN, 1922	432. WENDELL BRADY C. LEIGH, JR, 1920
33. HENRY BROWN, 1922	233. HENRY BROWN, 1922	433. WENDELL BRADY C. LEIGH, JR, 1920
34. HENRY BROWN, 1922	234. HENRY BROWN, 1922	434. WENDELL BRADY C. LEIGH, JR, 1920
35. HENRY BROWN, 1922	235. HENRY BROWN, 1922	435. WENDELL BRADY C. LEIGH, JR, 1920
36. HENRY BROWN, 1922	236. HENRY BROWN, 1922	436. WENDELL BRADY C. LEIGH, JR, 1920
37. HENRY BROWN, 1922	237. HENRY BROWN, 1922	437. WENDELL BRADY C. LEIGH, JR, 1920
38. HENRY BROWN, 1922	238. HENRY BROWN, 1922	438. WENDELL BRADY C. LEIGH, JR, 1920
39. HENRY BROWN, 1922	239. HENRY BROWN, 1922	439. WENDELL BRADY C. LEIGH, JR, 1920
40. HENRY BROWN, 1922	240. HENRY BROWN, 1922	440. WENDELL BRADY C. LEIGH, JR, 1920
41. HENRY BROWN, 1922	241. HENRY BROWN, 1922	441. WENDELL BRADY C. LEIGH, JR, 1920
42. HENRY BROWN, 1922	242. HENRY BROWN, 1922	442. WENDELL BRADY C. LEIGH, JR, 1920
43. HENRY BROWN, 1922	243. HENRY BROWN, 1922	443. WENDELL BRADY C. LEIGH, JR, 1920
44. HENRY BROWN, 1922	244. HENRY BROWN, 1922	444. WENDELL BRADY C. LEIGH, JR, 1920
45. HENRY BROWN, 1922	245. HENRY BROWN, 1922	445. WENDELL BRADY C. LEIGH, JR, 1920
46. HENRY BROWN, 1922	246. HENRY BROWN, 1922	446. WENDELL BRADY C. LEIGH, JR, 1920
47. HENRY BROWN, 1922	247. HENRY BROWN, 1922	447. WENDELL BRADY C. LEIGH, JR, 1920
48. HENRY BROWN, 1922	248. HENRY BROWN, 1922	448. WENDELL BRADY C. LEIGH, JR, 1920
49. HENRY BROWN, 1922	249. HENRY BROWN, 1922	449. WENDELL BRADY C. LEIGH, JR, 1920
50. HENRY BROWN, 1922	250. HENRY BROWN, 1922	450. WENDELL BRADY C. LEIGH, JR, 1920

- Private
- State Lands
- Forest Service
- Bureau of Land Management
- National Park Service
- Other Federal Land
- Fish and Wildlife Service
- Local Road
- River
- Stream/Creek
- Intermittent Creek
- Township
- County Border
- State Primary
- State Secondary
- Local Govt
- Native American
- Lake/Reservoir
- Interstate
- US Highway
- Fish Wildlife & Parks Wildlife Management Area

NOTES:
Not all riparian areas are shown on this map.
Riparian areas are shown in blue on this map.
The land ownership data was derived from the Montana Department of Natural Resources and Environment (DNRE) and the Montana Department of Transportation (MDT).
The DNRE and MDT are the primary sources of land ownership data in Montana.
The DNRE and MDT are the primary sources of land ownership data in Montana.
The DNRE and MDT are the primary sources of land ownership data in Montana.

ACKNOWLEDGMENTS (SOURCE):
This map was prepared as a joint effort between the MT Dept. of Nat. Wildlife and Parks (DNRE) and the Montana Natural Resource Information System (NRIS).
The DNRE and MDT are the primary sources of land ownership data in Montana.
The DNRE and MDT are the primary sources of land ownership data in Montana.
The DNRE and MDT are the primary sources of land ownership data in Montana.

The information on this map was developed by the Montana Department of Natural Resources and Environment (DNRE) and the Montana Department of Transportation (MDT).
The DNRE and MDT are the primary sources of land ownership data in Montana.
The DNRE and MDT are the primary sources of land ownership data in Montana.
The DNRE and MDT are the primary sources of land ownership data in Montana.

