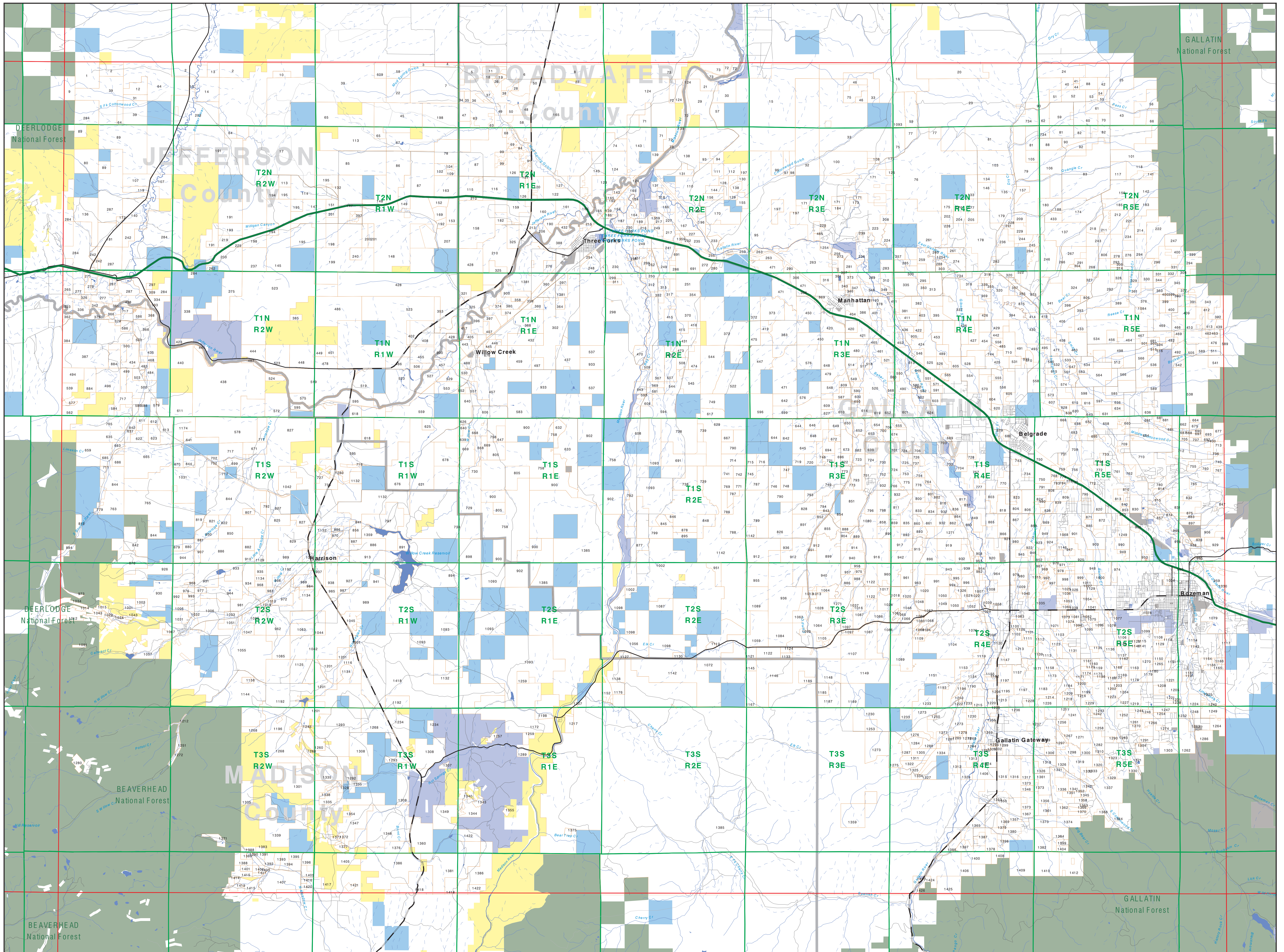
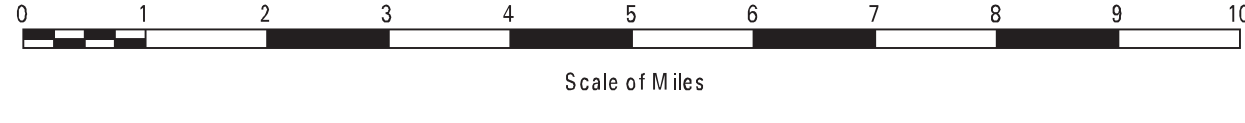


Private Land Ownership Identification

BOZEMAN - (45111b)



- Private
- Bureau of Land Management
- U.S. Forest Service
- National Park Service
- U.S. Fish and Wildlife Service
- Other Federal Land
- State Trust Lands
- Other State Lands
- Local Govt
- Indian Reservation Boundary
- MT Fish Wildlife & Parks Wildlife Management Area
- Lake/Reservoir
- Interstate
- Secondary Highway
- Highway
- Road
- Primitive Road
- River
- Stream/Creek
- Intermittent Creek
- Township
- County Border



SOURCES / ACKNOWLEDGEMENTS

This map was produced as a joint effort between the MT Dept. of Fish, Wildlife, and Parks (FWP) and the Montana Natural Resource Information System (NRIS) of the MT State Library, in response to Montana Code Annotated 87-3-206, which directs the FWP to "work cooperatively with all state and federal land management agencies... to develop accurate land ownership maps... in the State".

The public land data is from the MT Natural Heritage Program land ownership data collection. Much of this data was originally digitized by the Bureau of Land Management (BLM) from 1:100,000 scale BLM Surface Management Status maps. Additional information, corrections and updates for small lands and private lands were added by the University of Montana, while Spatial Analysis Unit, during 1996-1998. Since 1998, the Montana Natural Heritage Program has made numerous updates and corrections to public trust lands, Montana Fish, Wildlife & Parks areas, US Fish & Wildlife Service areas, and conservation easements. These edits are based on data supplied by the various public agencies and land trusts, and have not been verified against county or Montana Department of Revenue records.

The private land data were developed for the Montana Cadastral Database Project. These data are provided through a cooperative effort between the Montana Department of Administration (DOA), the Montana Department of Revenue (DOR), other state agencies, local governments, USDOI BLM and private enterprise. Lands depicted on this map represent single ownership of contiguous parcels that are at least 40 acres in size. The DOA maintains the GIS cadastral layer and the DOR maintains the private ownership information.

The base scale for the public ownership data is 1:100,000, though many of the recent edits incorporate data digitized from 1:24,000 scale maps or survey data. Private ownership data is accurate to scales of 1:24,000 or smaller.

Map produced August 2012 with ownership data current as of July, 2012.

USGS 100,000 Scale Quadrangle Index

1100	481130	481140	481150	481160	481170	481180	481190	481200	481210	481220	481230	481240
1101	481154	481164	481174	481184	481194	481204	481214	481224	481234	481244	481254	481264
1102	481158	481168	481178	481188	481198	481208	481218	481228	481238	481248	481258	481268
1103	481162	481172	481182	481192	481202	481212	481222	481232	481242	481252	481262	481272
1104	481166	481176	481186	481196	481206	481216	481226	481236	481246	481256	481266	481276
1105	481170	481180	481190	481200	481210	481220	481230	481240	481250	481260	481270	481280
1106	481174	481184	481194	481204	481214	481224	481234	481244	481254	481264	481274	481284
1107	481178	481188	481198	481208	481218	481228	481238	481248	481258	481268	481278	481288
1108	481182	481192	481202	481212	481222	481232	481242	481252	481262	481272	481282	481292
1109	481186	481196	481206	481216	481226	481236	481246	481256	481266	481276	481286	481296
1110	481190	481200	481210	481220	481230	481240	481250	481260	481270	481280	481290	481300
1111	481194	481204	481214	481224	481234	481244	481254	481264	481274	481284	481294	481304
1112	481198	481208	481218	481228	481238	481248	481258	481268	481278	481288	481298	481308
1113	481202	481212	481222	481232	481242	481252	481262	481272	481282	481292	481302	481312
1114	481206	481216	481226	481236	481246	481256	481266	481276	481286	481296	481306	481316
1115	481210	481220	481230	481240	481250	481260	481270	481280	481290	481300	481310	481320
1116	481214	481224	481234	481244	481254	481264	481274	481284	481294	481304	481314	481324
1117	481218	481228	481238	481248	481258	481268	481278	481288	481298	481308	481318	481328
1118	481222	481232	481242	481252	481262	481272	481282	481292	481302	481312	481322	481332
1119	481226	481236	481246	481256	481266	481276	481286	481296	481306	481316	481326	481336
1120	481230	481240	481250	481260	481270	481280	481290	481300	481310	481320	481330	481340
1121	481234	481244	481254	481264	481274	481284	481294	481304	481314	481324	481334	481344
1122	481238	481248	481258	481268	481278	481288	481298	481308	481318	481328	481338	481348
1123	481242	481252	481262	481272	481282	481292	481302	481312	481322	481332	481342	481352
1124	481246	481256	481266	481276	481286	481296	481306	481316	481326	481336	481346	481356
1125	481250	481260	481270	481280	481290	481300	481310	481320	481330	481340	481350	481360
1126	481254	481264	481274	481284	481294	481304	481314	481324	481334	481344	481354	481364
1127	481258	481268	481278	481288	481298	481308	481318	481328	481338	481348	481358	481368
1128	481262	481272	481282	481292	481302	481312	481322	481332	481342	481352	481362	481372
1129	481266	481276	481286	481296	481306	481316	481326	481336	481346	481356	481366	481376
1130	481270	481280	481290	481300	481310	481320	481330	481340	481350	481360	481370	481380
1131	481274	481284	481294	481304	481314	481324	481334	481344	481354	481364	481374	481384
1132	481278	481288	481298	481308	481318	481328	481338	481348	481358	481368	481378	481388
1133	481282	481292	481302	481312	481322	481332	481342	481352	481362	481372	481382	481392
1134	481286	481296	481306	481316	481326	481336	481346	481356	481366	481376	481386	481396
1135	481290	481300	481310	481320	481330	481340	481350	481360	481370	481380	481390	481400
1136	481294	481304	481314	481324	481334	481344	481354	481364	481374	481384	481394	481404
1137	481298	481308	481318	481328	481338	481348	481358	481368	481378	481388	481398	481408
1138	481302	481312	481322	481332	481342	481352	481362	481372	481382	481392	481402	481412
1139	481306	481316	481326	481336	481346	481356	481366	481376	481386	481396	481406	481416
1140	481310	481320	481330	481340	481350	481360	481370	481380	481390	481400	481410	481420
1141	481314	481324	481334	481344	481354	481364	481374	481384	481394	481404	481414	481424
1142	481318	481328	481338	481348	481358	481368	481378	481388	481398	481408	481418	481428
1143	481322	481332	481342	481352	481362	481372	481382	481392	481402	481412	481422	481432
1144	481326	481336	481346	481356	481366	481376	481386	481396	481406	481416	481426	481436
1145	481330	481340	481350	481360	481370	481380	481390	481400	481410	481420	481430	481440
1146	481334	481344	481354	481364	481374	481384	481394	481404	481414	481424	481434	481444
1147	481338	481348	481358	481368	481378	481388	481398	481408	481418	481428	481438	481448
1148	481342	481352	481362	481372	481382	481392	481402	481412	481422	481432	481442	481452
1149	481346	481356	481366	481376	481386	481396	481406	481416	481426	481436	481446	481456
1150	481350	481360	481370	481380	481390	481400	481410	481420	481430	481440	481450	481460
1151	481354	481364	481374	481384	481394	481404	481414	481424	481434	481444	481454	481464
1152	481358	481368	481378	481388	481398	481408	481418	481428	481438	481448	481458	481468
1153	481362	481372	481382	481392	481402	481412	481422	481432	481442	481452	481462	481472
1154	481366	481376	481386	481396	481406	481416	481426	481436	481446	481456	481466	481476
1155	481370	481380	481390	481400	481410	481420	481430	481440	481450	481460	481470	481480
1156	481374	481384	481394	481404	481414	481424	481434	481444	481454	481464	481474	481484
1157	481378	481388	481398	481408	481418	481428	481438	481448	481458	481468	481478	481488
1158	481382	481392	481402	481412	481422	481432	481442	481452	481462	481472	481482	481492
1159	481386	481396	481406	481416	481426	481436	481446	481456	481466	481476	481486	481496
1160	481390	481400	481410	481420	481430	481440	481450	481460	481470	481480	481490	481500
1161	481394	481404	481414	481424	481434	481444	481454	481464	481474	481484	481494	481504
1162	481398	481408	481418	481428	481438	481448	481458	481468	481478	481488	481498	481508
1163	481402	481412	481422	481432	481442	481452	481462	481472	481482	481492	481502	481512
1164	481406	481416	481426	481436	481446	481456	481466	481476	481486	481496	481506	481516
1165	481410	481420	481430	481440	481450	481460	481470	481480	481490	481500	481510	481520
1166	481414	481424	481434	481444	481454	481464	481474	481484	481494	481504	481514	481524
1167	481418	481428	481438	481448	481458	481468	481478	481488	481498	481508	481518	481528
1168	481422	481432	481442	481452	481462	481472	481482	481492	481502	481512	481522	481532
1169	481426	481436	481446	481456	481466	481476	481486	481496	481506	481516	481526	481536
1170	481430	481440	481450	481460	481470	481480						